

www.RealEstateInHaltonHills.com



**RE/MAX**  
REAL ESTATE  
CENTRE  
INC.  
905-877-5211  
1-800-834-5516



www.RealEstateInHaltonHills.com

www.RealEstateInHaltonHills.com



**\$595,000**  
Spacious 4000 sq. ft. home on 3.4 acres. Huge principal rooms. Indoor pool, 6 bedrooms on second floor, oak kitchen, hardwood & broadloom flooring, fireplace in the living room & rec room. Large eat-in kitchen, separate dining room. Call Norm\* to view.



**THREE BEDROOM RAISED BUNGALOW IN MATURE AREA OF ACTON**  
Lennox furnace & c/air installed in 2003. Walkout french patio doors from the dining room to a large deck & spacious fenced backyard. Finished basement features newer woodstove, reclaimed brick in the large basement rec room, walk-in from the garage to the basement. Eat-in kitchen. Pride of ownership.



**\$299,900**  
Moore Park Area. Great family home in desirable area. Spacious pool sized private fenced lot with lots of gardens. Main floor family room with walk out to back yard.  
Updated furnace with central air in 2002. Roof, eaves, soffits, fascia in 2004, panel & copper wiring in 2000, main bath 2000. Some newer windows. Was 4 bedroom, now 3 bedroom with spacious master with large closet. Walk to school & park. Don't miss out on this opportunity! Call Norm Paget\* to view!



**\$319,900**  
4 bdrm, 3 bath brick home located on a 30' x 117' lot. Access from highway to garage. 5 minutes to the 401, Hwy 7 & GO Transit. This home is in top notch condition & ready to move in. New windows on 2nd floor in 2004, new front door & patio door. Water softener is owned. Approx. 2000 sq. ft. Many fine upgrades including new kit. cabinets & ceramics. Walkout to 16' x 16' deck to a spacious fenced yard from kitchen. Main floor family room features wood FP. Newly renovated 2 pc bath.



5454 sq. ft. Commercial/Retail located in Downtown Acton. Full basement. 2 double door loading. C1 zoning. Has many commercial/retail uses. Call Norm Paget\* for details.

www.RealEstateInHaltonHills.com



116 Guelph St., Georgetown (905) 702-9800 1-888-524-6005



\$369,900

**TRANQUILITY IN TOWN**

This is one of a kind. Beautiful 2 bdrm, 2 bathroom bungalow with open concept on quiet street in park area. Walk to downtown, schools, churches and market. Immaculately kept house with Japanese garden and waterfall. Large kitchen and family room with walkout to huge partially covered wrap around deck complete with hot tub. Hardwood floors throughout. Quick closing possible. \$369,900.



NEW PRICE

\$253,800

**NEXT TO NEW**

Two year old semi-detached in Milton, with 3 bedrooms, 2 baths; Upgraded ceramics in bathroom upstairs. Fireplace in living room. Kitchen features: B/I dishwasher, extra cupboard space. Offered at \$253,800. This will not last! Call Daniel Foy\*.



\$344,900

**TRANQUILITY ON 10 ACRES**

and an everflowing stream runs thru it. Open concept home with spiral staircase leading to bedroom loft. Walkout basement has heated floor. Hardwood floors throughout. Jim\* & Cathy\*\* ext. 51



Purchase any of these homes through Jim & Cathy\* and receive **1000 BONUS AIR MILES**



Linda Breese & Jennifer Lovsin  
Sales Representatives  
Re/Max Realty Specialists Inc.

519-837-1300 Toll Free: 1-877-374-7653



\$484,900

**OPEN HOUSE**  
SATURDAY, SEPT. 3, 2005 - 2:00 - 4:00 p.m.  
7725 Maltby Road, Puslinch  
(Corner of Watson Road)

**NEW COUNTRY LISTING**  
Picture perfect 3 acres with pond. Beautifully maintained 1960 sq ft bungalow with stunning granny flat in walkout lower level. Upper sunroom with walkout to gardens and hot tub.



\$389,900

**OPEN HOUSE**  
SUNDAY, SEPT. 4, 2005 - 2:00 - 4:00 p.m.  
5262 Wellington Road #27  
(Between Rockwood and Brucedale)

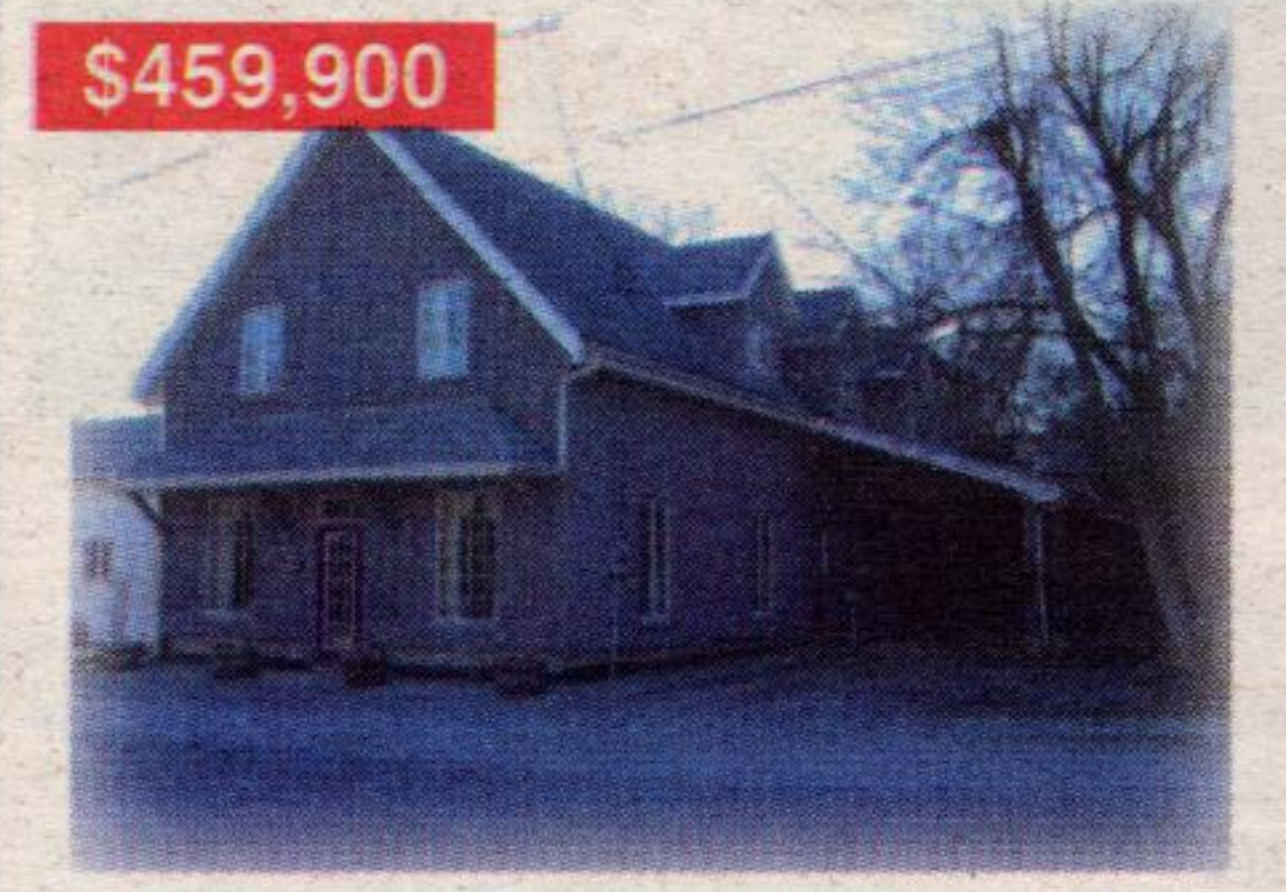
**COUNTRY SECLUSION ON 2.42 ACRES**  
Charming 3 bedroom board and batten Cape Cod home. Over 2000 sq. ft. center hall plan with lovely cherry cabinet. Large living room with brick woodburning fireplace and family room with stone woodburning fireplace. Large auxiliary building with workshop, home gym and games room.



\$319,900

Elegant 6 year old Colonial designed 2 storey home with loads of upgrades. Large fenced landscaped lot, double car garage.

See virtual tour at [www.jlovsin.com](http://www.jlovsin.com)  
<<http://www.jlovsin.com/>> or [www.lindabreese.com](http://www.lindabreese.com)  
<<http://www.lindabreese.com>>



\$459,900

**CHARMING ELORA VILLAGE**  
Business opportunity and a beautifully 4 bedroom 10 yr old post and beam home. 3570 square foot with 24 x 25 sq ft hobby shop. Steps to river and downtown.

See virtual tour at [www.jlovsin.com](http://www.jlovsin.com)  
<<http://www.jlovsin.com/>> or [www.lindabreese.com](http://www.lindabreese.com)  
<<http://www.lindabreese.com>>

www.lindabreese.com/www.jlovsin.com

**SIDEROADS**  
of Halton Hills

**NEXT ISSUE COMING**  
**SEPTEMBER 21, 2005**

**The Independent**  
Free Press