

# Business



## Main Street Inn open for business

Georgetown's newest restaurant, The Main Street Inn, recently opened its doors at 126 Main Street South in downtown Georgetown. From left are, owner Bryan Flood, co-owner Sharon Leal, Angela Dadd, Brandi Balanowski, and Jacqui Kobow. The restaurant also offers a bed and breakfast service complete with a four-poster bed and newly decorated room.

Photo by Yves Desjardins



## Herbal Magic opens

Herbal Magic owners, from left, Bonnie Gonchar, Toni Pigeon and Cori Critchell recently celebrated the opening of the store's new Acton location at 372 Queen Street in the Sobeys plaza.

Photo by Trish Wilkinson



**FACTORY AUTHORIZED  
BLUE OVAL  
DAYS**

**2005 FOCUS ZX5**

lease for only **\$199** per month, 36 month with \$2,295  
\*\*\*down or EQUIVALENT TRADE. Plus  
freight \$950. \$0 Security with the  
purchase of Wear Care†





Car and Driver's 10Best Cars  
5 years in a row 2000 - 2004.†

## OUTSTANDING VALUE ON EVERYTHING IN OUR SHOWROOM.



**2005 FOCUS ZX4**

**GET BLUE OVAL CASH  
PURCHASE CREDITS OF**

**\$4,300\***  
up to

on ALL 2005 Focus

Or Cash Purchase Focus ZX4 SE for only

**\$14,395**



**2005 TAURUS**

**GET BLUE OVAL  
PURCHASE FINANCING OF**

**0%\*** for 60 months

on ALL 2005 Taurus

Or Cash Purchase Taurus SE for only

**\$19,998**



**2005 FREESTAR**

**GET BLUE OVAL CASH  
PURCHASE CREDITS OF**

**\$7,000\***  
up to

on MOST 2005 Freestar

Or Cash Purchase Freestar from only

**\$19,998**



ford.ca

Built for life

in Ontario.

### GREAT REASONS TO OPEN

### BONUSPAK TODAY!



ENTER TO WIN A 30" MDG LCD TV!  
Look inside your BONUSPAK Envelope  
Cover for Details



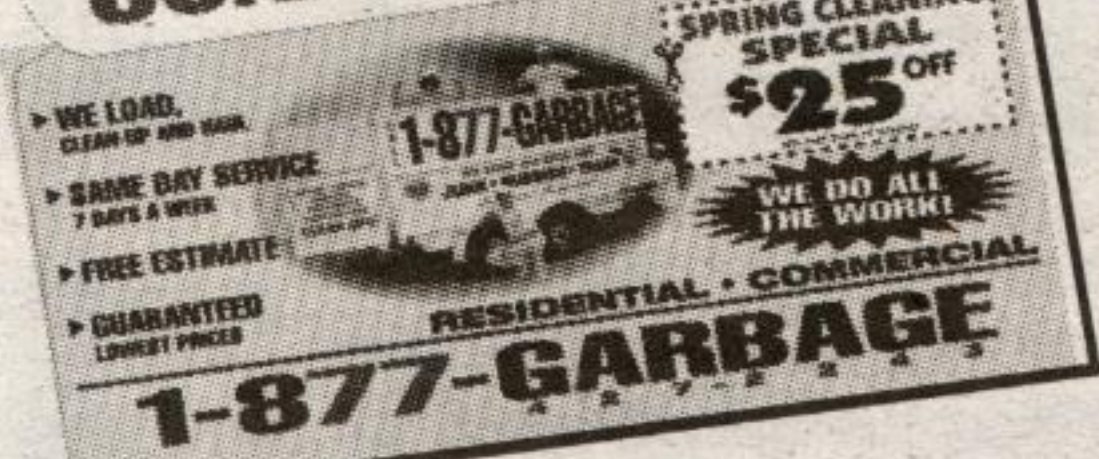
**MDG**  
www.mdg.ca

### FREE CountryStyle



NEW Iced Mango  
Citrus Freeze or  
Polar Cappuccino from  
Country Style with  
coupon inside your  
BONUSPAK

### JUNK REMOVAL!



PLUS MONEY-SAVING  
COUPONS FROM...

GEORGETOWN BOWL

Topper's Pizza

PURE Permanent Laser Hair Removal

Mr. STEAMER The Carpet & Upholstery CLEANER

DGH

For advertising information contact:

Catherine Straker at 905-454-1244 ext 205

### ATTENTION GRADS!



**WISE BUYERS READ THE LEGAL COPY:** \*Cash purchase a new 2005 Ford Focus ZX4 SE base model/Taurus SE/Freestar base model/ for \$14,395/\$19,998/\$19,998 (after \$1,500/\$1,500/\$0 Dealer Cash and \$2,800/\$3,000/\$7,000 Factory to Dealer Credit (FTDC) deducted). Taxes payable on full amount of purchase prices after Dealer Cash and FTDC deducted. Cash purchase offers exclude freight (\$950/\$1,050/\$1,150), license, insurance, administration fees and all applicable taxes. \*\*Lease a new 2005 Ford Focus ZX5 for \$199 per month based on an annual lease rate of 0.5% and a 36 month lease from Ford Credit to qualified retail lessees, on approved credit. Total lease obligation is \$9,459. Some conditions and a mileage restriction of 60,000 km over 36 months applies. A charge of 8 cents per km over mileage restrictions applies, plus applicable taxes. \$2,295 down payment or equivalent trade required. First month's payment and \$250 security deposit required. Lease offers exclude freight (\$950) licence, insurance, administration fees and all applicable taxes. Security Deposit may be required by Ford Credit based upon customer credit terms and conditions. †0% purchase financing on all new 2005 Ford Taurus for a maximum of up to 60 months to retail customers, on approved credit from Ford Credit. E.g. \$20,000 purchase financed at 0% annual percentage rate for 60 months, monthly payment is \$333.34, cost of borrowing is \$4,500 (including foregone \$3,000 Factory to Dealer Credits and \$1,500 Dealer Cash available on 2005 Ford Taurus SE) and total to be repaid is \$20,000. The effective rate of interest is 10.52%. Cash purchase any all new 2005 Ford Focus and most all new 2005 Freestar (excluding Freestar SEL Limited) and receive \$4,300/\$7,000 in cash purchase credits (comprised of \$1,500/\$0 Dealer Cash and \$2,800/\$7,000 Factory to Dealer Credit (FTDC)). Taxes payable wear and tear amendment product. It amends the customers lease wear and tear responsibilities (as stated on FCL contract) by waiving up to \$3,500 of excess wear and tear charges at lease-end (subject to certain exclusions). WearCare pricing (customer selling price is up to \$695 on 27/36 month RCI's). Dealer may sell or lease for less. Limited time offer. Offer may be cancelled at any time without notice. ©2005 Ford Motor Company.