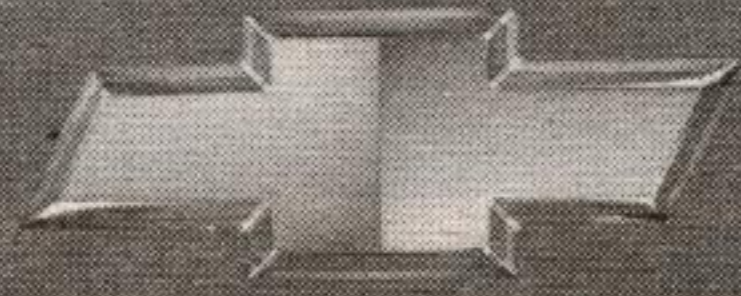


For the latest information, visit us at [gmcandada.com](http://gmcandada.com), drop by your local Chevrolet Dealer or call us at 1-800-GM-DRIVE. \*Based on a 48 month lease. A down payment or trade of \$2,370/\$1,630/\$2,370 (2005 Cobalt R7B Sedan or Coupe/2005 Aveo R7B/2005 Optra equipped as described) is required. Annual cost of borrowing of 2.4%/0.9%/0.9% per annum. Option to purchase at lease end is \$7,578/\$5,772/\$6,932 plus applicable taxes. Annual kilometre limit of 20,000 km. \$0.12 per excess kilometre. Other lease options available. Freight (\$950/\$960/\$960), licence, insurance, registration, PPSA, administration fees and taxes not included. Offers apply, as indicated. Dealer order or trade may be required. Offers apply to qualified retail customers in the Ontario Chevrolet Dealer Marketing Association area only (including Outaouais and excluding Northwestern Ontario). Dealers are free to set individual prices. Limited time offers which may not be combined with other offers. See your dealer for conditions and details. ▲Warranty based on 5 years or 100,000 km, whichever comes first. See dealer for details. \*\*Based on testing by Insurance Institute for Highway Safety (IIHS). ©Registered trademark of General Motors Corporation. TD Canada Trust licensed user of mark. Visa International Service Association/TD Canada Trust and GM licensed user of marks. ©Trade-mark of The Toronto-Dominion Bank.

# IT'S A NEW DAY AT CHEVROLET

EVENT



## "CHEVY'S LATEST WARRIOR, ARMED TO BATTLE CIVICS AND COROLLAS."

AUTOMOBILE MAGAZINE

### ALL NEW 2005 CHEVROLET COBALT



Cobalt Coupe LS with Sports Appearance Package and 16" Aluminum Wheels



Cobalt LT Sedan

### CHEVROLET COBALT COUPE OR SEDAN WITH AIR AND AUTOMATIC

**\$189\*** SMARTLEASE PER MONTH  
\$2,370 DOWN PAYMENT

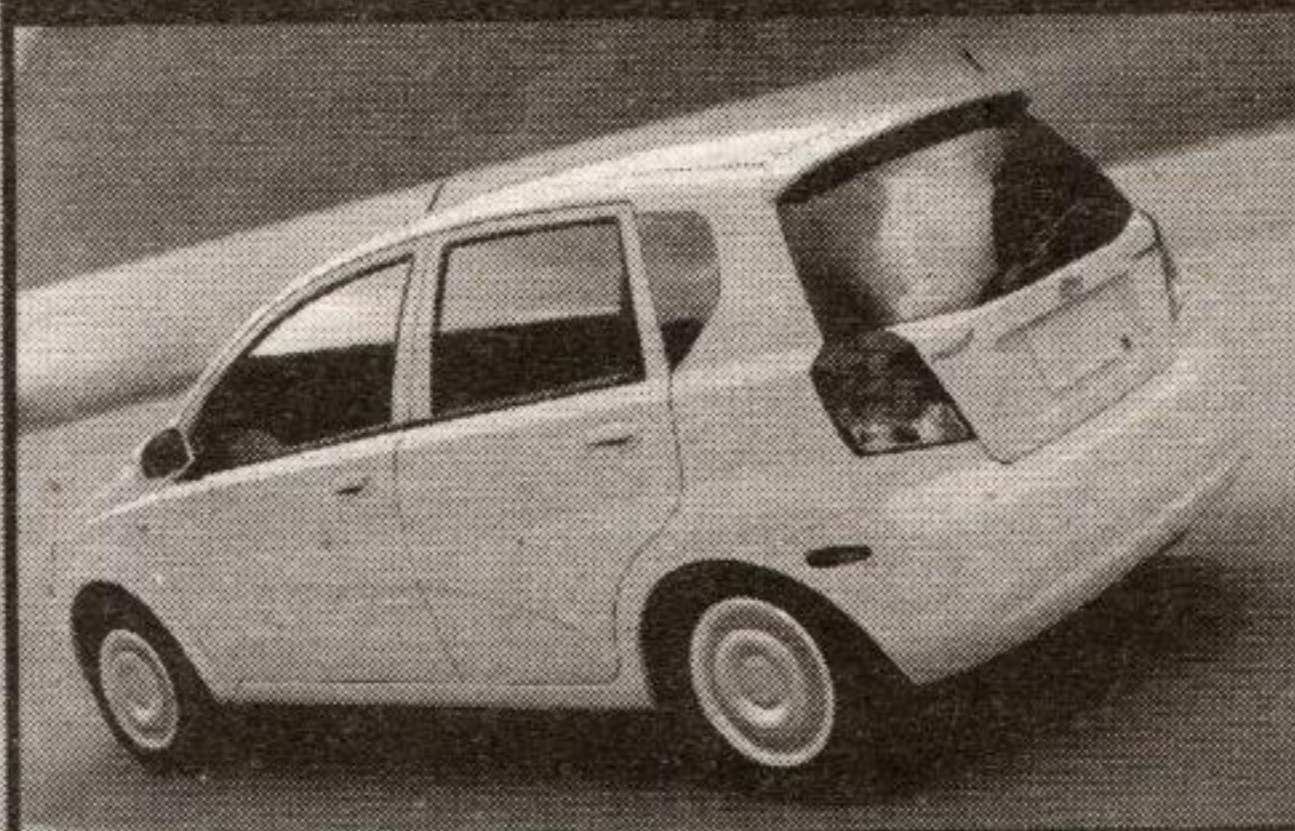
- Cobalt Coupe/Sedan (R7B)**
- 2.2L 145 HP ECOTEC Engine • 4-Speed Automatic Transmission • Air Conditioning
  - CD Stereo • 15" Wheels • 60/40 Split Folding Rear Seat • 5-Year/100,000 KM GM Powertrain Warranty With \$0 Deductible<sup>▲</sup>

#### HOW COBALT STACKS UP

	2005 CHEVROLET COBALT 4DR SEDAN BASE	2005 HONDA CIVIC 4DR SEDAN DX	2005 TOYOTA COROLLA 4DR SEDAN
<b>STANDARD FEATURES</b>			
STANDARD HP	145	115	130
CD PLAYER	YES	NO	YES
STANDARD WHEELS	15"	14"	15"
ELECTRIC POWER STEERING	YES	NO	NO
VARIABLE INTERMITTENT WIPERS	YES	NO	NO
AUTOMATIC HEADLAMPS	YES	NO	NO
DRIVER INFO CENTRE	YES	NO	NO
POWER TRUNK RELEASE	YES	NO	NO

Based on available competitive information  
COBALT IS RATED A "BEST PICK" FOR FRONTAL CRASH TEST RATING\*\*

#### 2005 CHEVROLET AVEO<sup>5</sup>



"...sharply styled, solidly constructed..."  
Laurance Yap, Toronto Star

SMARTLEASE  
**\$138\*** per month  
\$1,630 down payment

- Aveo<sup>5</sup> R7B • 5-year/100,000 KM GM Powertrain Warranty with \$0 Deductible<sup>▲</sup> • 1.6L DOHC Engine • 5-Speed Manual Transmission • 60/40 Split Flip and Fold Rear Seat • Fog Lights • Tilt Adjustable Steering Column • Driver Seat Height Adjuster • Spoiler

★★★★★  
HIGHEST GOVERNMENT  
FRONTAL CRASH  
SAFETY RATING

Chevrolet Aveo received a 5-Star rating for the driver and front passenger in the frontal crash test.<sup>▲</sup>



#### 2005 CHEVROLET OPTRA<sup>5</sup>



"...impressive interior room and a long list of standard features." Laurance Yap, Toronto Star

SMARTLEASE  
**\$178\*** per month  
\$2,370 down payment

- AIR AND AUTOMATIC**  
5-year/100,000 KM GM Powertrain Warranty with \$0 Deductible<sup>▲</sup> • 2.0L 119 HP DOHC Engine • CD/MP3 Player • 15" Steel Wheels with Wheel Covers • 4 Wheel Disc Brakes • Fog Lights • Spoiler



CHEVROLET FOR ALL LIFE'S ROADS