

**ROYAL LEPAGE**

Meadowtowne Realty  
Independently Owned & Operated Broker  
324 Guelph Street, Georgetown

**MICHAEL IMRIE**

Sales Representative

**"WORKING FOR YOU"**

905-877-8262

1-888-865-8262



Acton/Georgetown - Friday, November 26, 2004 Page 15



**Final payment**

Georgetown Lions recently made their final \$15,000 contribution to the local motion fund, completing their \$75,000 commitment to the fund-raising campaign. The funds were raised at their annual golf tournament in June. On hand for the presentation were (from left) Lions Jim Harris, Georgette Dorcich, Halton Hills councillor Jane Fogal, Lions Marg Wilson and Pat Shannon. Photo by Ted Brown

**Open Darts at the legion**

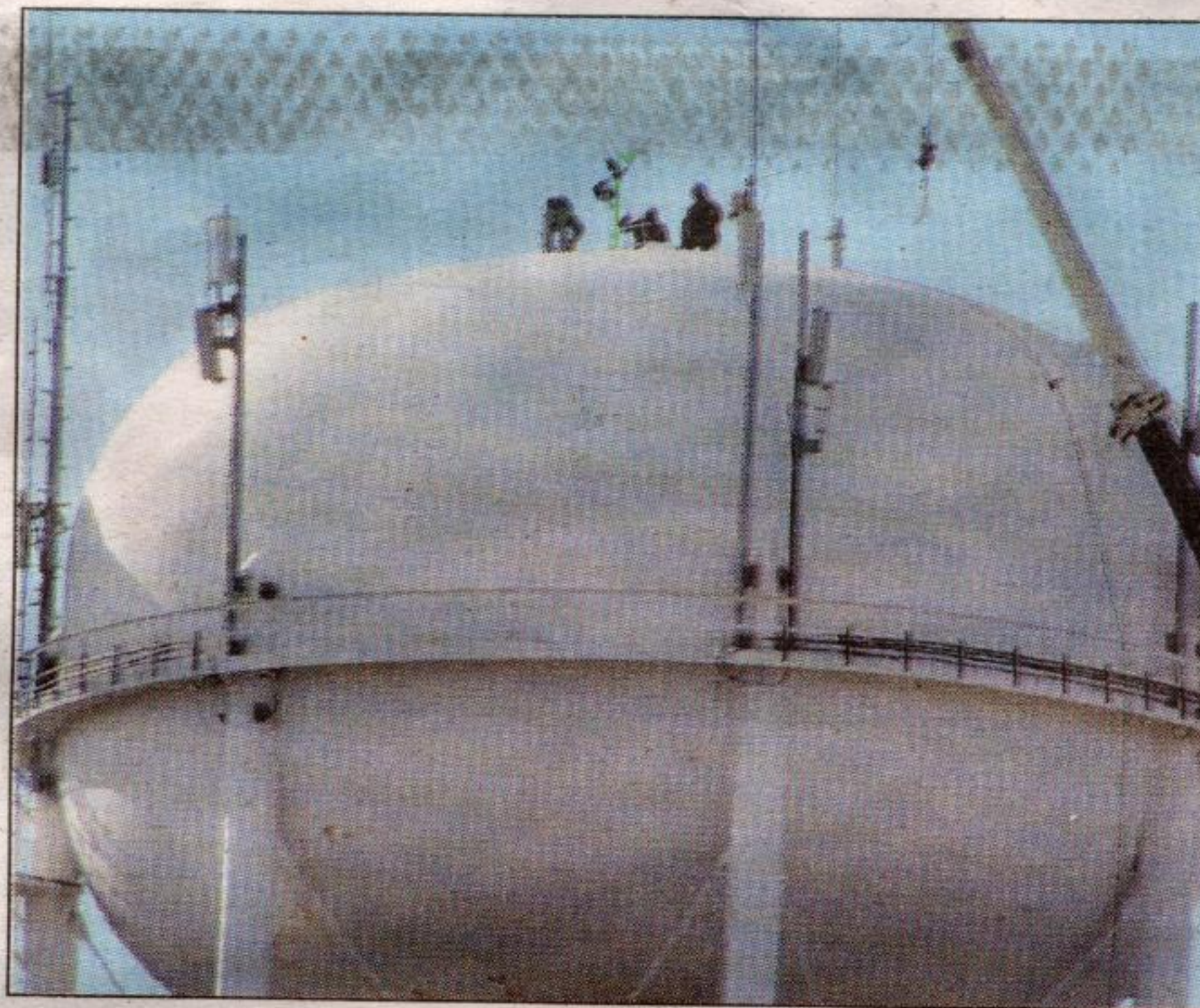
We had a very successful Christmas bazaar last Saturday. We are making a few changes to the venue for next year, but will keep you posted.

There is Open Darts tonight (Friday), 7:30 p.m. upstairs in the legion. Make up a foursome; it costs \$2.50 each to play.

There is district cribbage in Bramalea on Saturday. Good luck to our players who are representing Georgetown.

There's a potluck dinner for seniors visiting us on Thursday, Dec. 16.

-Janet Malloy  
Georgetown Legion Ladies Auxiliary



**Ahoy up there**

A crew of workmen subcontracted by Halton Region were dwarfed on top of the water tower on Todd Rd. as they performed a routine maintenance check on the structure this week.

Photo by Ted Brown

**Short Notice On Site Auction Sale**

Wednesday, Dec. 1 at 12:00pm Sharp  
For the Late Mr. Claude Emerson  
(Fire #) 15771 River Drive (old 17 Sideroad)  
Georgetown, Ontario

**Complete Contents of House & Property:** Very Nice 1930s 9 pc. Oak Dining Room Set - Table w/ Draw Leaf Ends, 6 Chairs, Buffet & Court Cupboard; Good c. 1920s Bedroom Set; Rockers; Oak Arts & Crafts Arm Chair; Caned Stool; J.&H. Chair; F.P. Chesterfield & Matching Chair (like new); Oil Paintings & Pictures; Floor & Table Lamps; A Very Good Over Mantle Mirror; Plant Stand; Linen; Old Splint Basket; Old Captain's Chair; Very Old Pink & White Partial Dinner Service; Pressed Glass; Depression Glass; Cut Glass Bowl; Lots of old Misc. Glass & China; Enamelware; Flatware; "Silverwoods" Pint & Qt. Milk Bottles; Oak Hall Tree; Magazine Stand; Oil Lamp; Barn Lantern; Crocks; Old Sealers; Tins; Carpenter's Tool Box; Hand Tools; Golf Balls; Leg Vise; Pair Large Cast Iron Posts (old); Handmade Ladder; Old Wooden Wheelbarrow; Walking Plow; Disc; "Massey Ferguson" (Deluxe) 35 Tractor (like new); Scraper Blade; 2 Furrow Plow; Mott Mower; Pioneer Chain Saw; Gas Lawn Mower; 2 Wheel Box Trailer; Good Wood 10' Farm Gate; H.D. Wheelbarrow; Bar Clamps; Shell Oil Can; Household Appliances; etc...

**Note:** This is a good, clean, small sale with all implements stored inside and well maintained. Household items will sell first. Please dress according to weather as this is an on site sale!

Please show ID when Registering.

Terms: Cash or Approved Cheque Day of Sale, with Proper I.D.

Auctineers - Don Colling, Doug Donaldson 905-877-0117

**Up To 80% OFF Retail Giftware Warehouse SALE**

for a major supplier to Canadian and U.S. Gift stores

Including a huge selection of Christmas giftware as well as picture frames, candle accessories, garden accessories, rustic contemporary, vintage, antique home décor and much more.

Fri. Nov. 26th - 9am - 7pm  
Sat. Nov. 27th - 9am - 5pm  
Sun. Nov. 28th - 11am - 4pm

8719 Holgate Cres.  
Milton, Ontario  
905-876-9902 x301



**DRIVE IT / LOVE IT**

Drive the Honda you want. Get the value you deserve.

**2005 ACCORD SEDAN DX**

By any standard, our most affordable Accord is feature loaded.

DX builds on Accord Sedan's heritage as the most award-winning vehicle in its class, with:

- 5-SPEED AUTOMATIC TRANSMISSION
- 2.4L 160HP DOHC i-VTEC™ ENGINE
- INDEPENDENT DOUBLE WISHBONE SUSPENSION
- POWER WINDOWS & 2-STAGE DOOR LOCKS
- KEYLESS REMOTE ENTRY
- CFC-FREE A/C WITH MICRON AIR FILTRATION
- AM/FM/CD STEREO
- NEW FOR 2005 TAILLIGHT BULB AND LENS DESIGN...AND MUCH MORE

LEASE FOR 48 MONTHS: **\$198** PER MONTH D.A.C. WITH \$0 DOWN PAYMENT\* and SECURITY DEPOSIT

OR PURCHASE FOR **\$16,200**

Civic SE, model ES1535PX shown

**2005 CIVIC SEDAN DX**

Unbeatable reliability, top-ranked fuel efficiency and strong resale value.

For 2005, Honda renews its passion to deliver the benchmark of the class. Enjoy genuine Honda quality from bumper to bumper with:

- 1.7L SOHC 16-VALVE ENGINE
- 5-SPEED MANUAL TRANSMISSION
- 4-WHEEL INDEPENDENT SUSPENSION
- THEFT-DETERRENT ECU IMMOBILIZER
- DUAL STAGE, DUAL THRESHOLD FRONT AIRBAGS (SRS)
- POWER STEERING & BRAKES
- EXCLUSIVE CIVIC FLAT REAR FLOOR... AND MUCH MORE.

LEASE FOR 60 MONTHS: **\$198** PER MONTH D.A.C. WITH \$0 DOWN PAYMENT\*

OR PURCHASE FOR **\$16,200**

**2005 ACCORD SEDAN EX-L**

The definition of affordable luxury.

Designed to stimulate and soothe, EX-L adds to or replaces DX features with:

- LEATHER-TRIMMED SEATING WITH HEATED FRONT SEATS
- POWER MOONROOF WITH TILT FEATURE
- 16" ALLOY WHEELS
- 6-DISC IN-DASH CD CHANGER
- AUTO DUAL ZONE CLIMATE CONTROL
- SECURITY SYSTEM
- LEATHER-WRAPPED STEERING WHEEL
- OUTSIDE TEMPERATURE GAUGE
- NEW FOR 2005 ILLUMINATED STEERING WHEEL-MOUNTED AUDIO CONTROLS...AND MUCH MORE.

LEASE FOR 48 MONTHS: **\$268** PER MONTH D.A.C. WITH \$4,429 DOWN

OR PURCHASE FOR **\$25,400**

**2005 ACCORD SEDAN EX-L**

The definition of affordable luxury.

Designed to stimulate and soothe, EX-L adds to or replaces DX features with:

- LEATHER-TRIMMED SEATING WITH HEATED FRONT SEATS
- POWER MOONROOF WITH TILT FEATURE
- 16" ALLOY WHEELS
- 6-DISC IN-DASH CD CHANGER
- AUTO DUAL ZONE CLIMATE CONTROL
- SECURITY SYSTEM
- LEATHER-WRAPPED STEERING WHEEL
- OUTSIDE TEMPERATURE GAUGE
- NEW FOR 2005 ILLUMINATED STEERING WHEEL-MOUNTED AUDIO CONTROLS...AND MUCH MORE.

LEASE FOR 48 MONTHS: **\$318** PER MONTH D.A.C. WITH \$5,012 DOWN

OR PURCHASE FOR **\$30,100**

**2005 CR-V LX 4x4**

More than a match for winter.

NEW FOR 2005 - Every CR-V delivers the most complete safety package in its class featuring all-new Vehicle Stability Assist (VSA®). In addition, enjoy:

- 2.4L 160HP i-VTEC™ ENGINE
- NEW FOR 2005 RESTYLED FRONT GRILLE, SIDE SILL AND REAR BUMPER
- NEW FOR 2005 KEYLESS REMOTE ENTRY
- NEW FOR 2005 LARGER 16" WHEELS AND TIRES
- AM/FM/CD STEREO
- CFC-FREE AIR CONDITIONING
- FRONT/REAR INTERMITTENT WIPERS
- POWER WINDOWS, LOCKS & MIRRORS...AND MUCH MORE.

LEASE FOR 48 MONTHS: **\$298** PER MONTH D.A.C. WITH \$4,912 DOWN

OR PURCHASE FOR **\$25,400**

CR-V LX, model RD7755E shown

**2005 CR-V LX 4x4**

More than a match for winter.

NEW FOR 2005 - Every CR-V delivers the most complete safety package in its class featuring all-new Vehicle Stability Assist (VSA®). In addition, enjoy:

- 2.4L 160HP i-VTEC™ ENGINE
- NEW FOR 2005 RESTYLED FRONT GRILLE, SIDE SILL AND REAR BUMPER
- NEW FOR 2005 KEYLESS REMOTE ENTRY
- NEW FOR 2005 LARGER 16" WHEELS AND TIRES
- AM/FM/CD STEREO
- CFC-FREE AIR CONDITIONING
- FRONT/REAR INTERMITTENT WIPERS
- POWER WINDOWS, LOCKS & MIRRORS...AND MUCH MORE.

LEASE FOR 48 MONTHS: **\$298** PER MONTH D.A.C. WITH \$4,912 DOWN

OR PURCHASE FOR **\$25,400**

Ontario Honda Dealers VISIT AND LOCATE YOUR NEAREST DEALER AT: [www.hondaontario.com](http://www.hondaontario.com)

THE SMARTER WAY TO BUY.

Now every 2005 Honda comes with **Plus** 3-year roadside assistance\*

GRADUATE PROGRAM

HONDA

Lease and finance offers are from Honda Canada Finance Inc., on approved credit. †Based on a 2005 Civic Sedan DX, model ES1535PX - factory order may be required - (†Accord Sedan DX, model CM5615E) (2005 Accord Sedan EX-L, model CM5665JN) (2005 CR-V LX, model RD7755E). Lease for 60 (†/0/48) months at \$198 (†\$268) (\$318) (\$298) per month plus applicable taxes, with 120,000 (†/0/96,000) km allowance (12¢/km exceeding allowance). \$0 down on approved credit from Honda Canada Finance Inc. \$0 (†\$4,429.00) (\$5,012.00) (\$4,912.00) down payment or equivalent trade acceptable to dealer. Initiation payment of \$279.69, (†\$5,453.54) (\$6,181.49) (\$6,043.49) includes down payment, first monthly payment, registration, security deposit of \$0, freight and P.D.E. and taxes. PPSA is additional. Total freight and P.D.E. is \$1,095.00 (†/0/\$1,180.00) (†\$1,325.00). Total lease payment is \$13,713.31 (†\$19,938.40) (\$23,368.85) (\$22,149.85). Option to purchase at lease end for \$6,966.00 (†\$12,700.00) (\$15,050.00) (\$14,100.00) and taxes. Leases calculated with finance rate of 4.9%. Rate may change effective December 1st, 2004 and will affect down payment, security deposit, residual value and initiation figures. Dealer may lease for less. \*2.9% (\*\*3.9%) purchase financing is available on select 2005 Accords (\*\*2005 CR-Vs and Civics) for up to 36 months. Finance example: \$20,000 at 2.9% (\*\*3.9%) per annum equals \$580.74 (\*\*\$589.59) per month based on a 36 month term. C.O.B. is \$906.64 (\*\*\$1,225.24) for a total of \$20,906.64 (\*\*\$21,225.24). Dealer may sell for less. †††/0/4/††† Offers valid through November 30th, 2004 at participating dealers only. Does not include Accord Hybrid or Civic Hybrid. See participating dealer for full details. ©Recent university or college graduates may be eligible for an allowance of up to \$750.00 on certain models. †/A/See participating Honda Dealers for complete details.