

'Get your own'

Alessia Bonaldo of the Georgetown Rebels attempts to take the ball from a Loyola opponent during last Thursday's Halton senior girls playoff game. The Rebels posted an 8-2 regular season record but Loyola capitalized on its foul shooting, going 18-for-26 from the line, to down the Rebels 32-26 in the opening-round playoff game. Bonaldo led the Rebels with seven points, including a pair of three-pointers. Sherelle Sheppard had six points and Laura Thompson had five.

Photo by Herb Garbutt

Hurry to IKEA. These incredible deals won't last long.

SOLID WOOD HANGERS
\$4.99/8pk
was \$7.99/8pk



Perfect for winter coats!

Solid wood hangers
\$4.99/8 pack
was \$7.99/8 pack



\$3.99
was \$4.99



\$2.99/ea

Great for the kids' room!

JÄLL laundry bag
white or turquoise
only RA \$3.99
was \$4.99

FNISS wastepaper basket,
plastic, pink, turquoise or
transparent white
\$2.99/each



\$29.99
was \$39.99

Ideal for the closet
or laundry room!

ANTONIUS storage frame
stackable 70cm and 4 wire
baskets white only RA
\$29.99 was \$39.99



BABORD shoe rack
solid wood 80cm.
Holds up to 8 pairs
of shoes stackable
\$4.99 was \$7.99

\$4.99
was \$7.99

Offer valid until November 28, 2004

99¢ pasta!

\$1 breakfast!



Served daily after 3pm.
Get penne with marinara sauce or
alfredo sauce for 99¢.

Served daily until 11am.
Scrambled eggs, home fries,
sausage and a croissant.

Visit the IKEA store near you:

IKEA ETOBICOKE IKEA BURLINGTON
IKEA VAUGHAN HWY 400 & 7 IKEA NORTH YORK

Shop from home or office 1 800 661-9807

www.IKEA.ca

Unless otherwise specified, all prices are valid until November 28, 2004.
RA = Requires assembly. *while supplies last



Fits.

DRIVE IT / LOVE IT

Drive the Honda you want.
Get the value you deserve.

2005 CIVIC SEDAN DX

Unbeatable reliability, top-ranked fuel
efficiency and strong resale value.

For 2005, Honda renews its passion to deliver the benchmark of the class. Enjoy genuine Honda quality from bumper to bumper with:

- ▶ 1.7L SOHC 16-VALVE ENGINE ▶ 5-SPEED MANUAL TRANSMISSION ▶ 4-WHEEL INDEPENDENT SUSPENSION ▶ THEFT-DETERRENT ECU IMMOBILIZER ▶ DUAL STAGE, DUAL THRESHOLD FRONT AIRBAGS (SRS) ▶ POWER STEERING & BRAKES ▶ EXCLUSIVE CIVIC FLAT REAR FLOOR... AND MUCH MORE.

LEASE FOR 60 MONTHS
\$198 PER MONTH
D.A.C. OR PURCHASE FOR
\$16,200



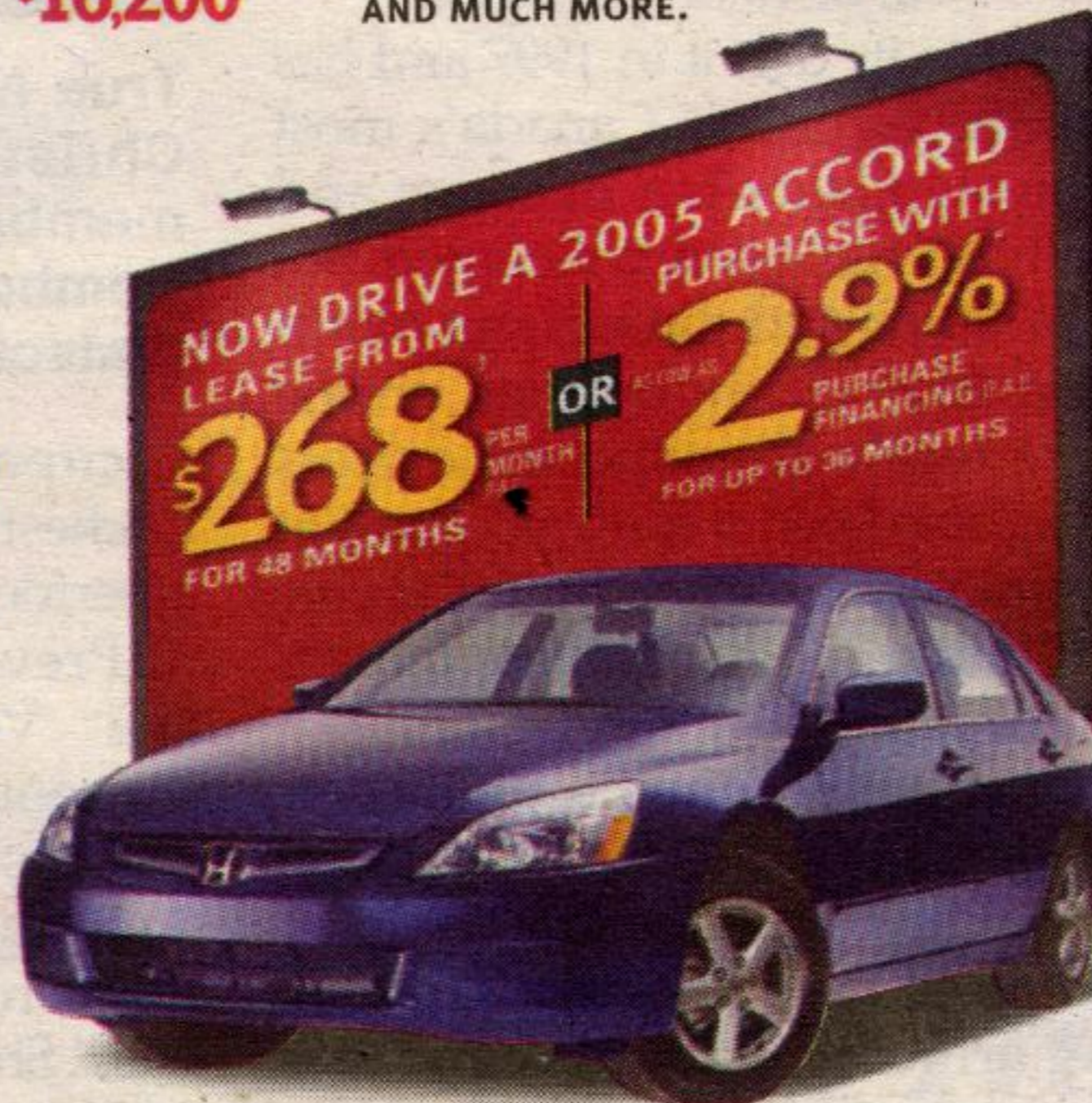
Civic SE, model ES1535PX shown

2005 ACCORD SEDAN DX

By any standard, our most
affordable Accord is feature loaded.

DX builds on Accord Sedan's heritage as the most award-winning vehicle in its class, with: ▶ 5-SPEED AUTOMATIC TRANSMISSION ▶ 2.4L 160HP DOHC i-VTEC™ ENGINE ▶ INDEPENDENT DOUBLE WISHBONE SUSPENSION ▶ POWER WINDOWS & 2-STAGE DOOR LOCKS ▶ KEYLESS REMOTE ENTRY ▶ CFC-FREE A/C WITH MICRON AIR FILTRATION ▶ AM/FM/CD STEREO ▶ NEW FOR 2005 TAILLIGHT BULB AND LENS DESIGN...AND MUCH MORE

LEASE FOR 48 MONTHS
\$268 PER MONTH
D.A.C. OR PURCHASE FOR
\$25,400
WITH \$4,429 DOWN



Accord Sedan EX-L, model CM5665JN shown

2005 ACCORD SEDAN EX-L

The definition of affordable luxury.

Designed to stimulate and soothe, EX-L adds to or replaces DX features with: ▶ LEATHER-TRIMMED SEATING WITH HEATED FRONT SEATS ▶ POWER MOONROOF WITH TILT FEATURE ▶ 16" ALLOY WHEELS ▶ 6-DISC IN-DASH CD CHANGER ▶ AUTO DUAL ZONE CLIMATE CONTROL ▶ SECURITY SYSTEM ▶ LEATHER-WRAPPED STEERING WHEEL ▶ OUTSIDE TEMPERATURE GAUGE ▶ NEW FOR 2005 ILLUMINATED STEERING WHEEL-MOUNTED AUDIO CONTROLS...AND MUCH MORE.

LEASE FOR 48 MONTHS
\$318 PER MONTH
D.A.C. OR PURCHASE FOR
\$30,100
WITH \$5,012 DOWN

2005 CR-V LX 4x4

More than a match for winter.

NEW FOR 2005 - Every CR-V delivers the most complete safety package in its class featuring all-new Vehicle Stability Assist (VSA®). In addition, enjoy: ▶ 2.4L 160HP i-VTEC™ ENGINE ▶ NEW FOR 2005 RESTYLE FRONT GRILLE, SIDE SILL AND REAR BUMPER ▶ NEW FOR 2005 KEYLESS REMOTE ENTRY ▶ NEW FOR 2005 LARGER 16" WHEELS AND TIRES ▶ AM/FM/CD STEREO ▶ CFC-FREE AIR CONDITIONING ▶ FRONT/REAR INTERMITTENT WIPERS ▶ POWER WINDOWS, LOCKS & MIRRORS...AND MUCH MORE.

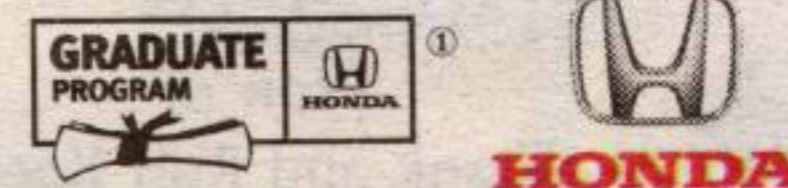
LEASE FOR 48 MONTHS
\$298 PER MONTH
D.A.C. WITH \$4,912 DOWN



CR-V LX, model RD7755E shown

Ontario Honda Dealers
THE SMARTER WAY TO BUY.

VISIT AND LOCATE YOUR NEAREST DEALER AT:
www.hondaontario.com



Lease and finance offers are from Honda Canada Finance Inc., on approved credit. †Based on a 2005 Civic Sedan DX, model ES1515PX - factory order may be required - (†Accord Sedan DX, model CM5615E) (2005 Accord Sedan EX-L, model CM5665JN) (2005 CR-V LX, model RD7755E). Lease for 60 (†/0/448) months at \$198 (†\$268) (†\$318) (†\$298) per month plus applicable taxes, with 120,000 (†/0/96,000) km allowance (12c/km exceeding allowance). \$0 down on approved credit from Honda Canada Finance Inc. \$0 (†\$4,429.00) (†\$5,012.00) (†\$4,912.00) down payment or equivalent trade acceptable to dealer. Initiation payment of \$279.69, (†\$5,453.54) (†\$6,181.49) (†\$6,043.49) includes down payment, first monthly payment, registration, security deposit of \$0, freight and P.D.E. and taxes. PPSA is additional. Total freight and P.D.E. is \$1,095.00 (†/0/\$1,180.00) (†\$1,325.00). Total lease payment is \$13,713.31 (†\$19,938.40) (†\$23,368.85) (†\$22,149.85). Option to purchase at lease end for \$6,966.00 (†\$12,700.00) (†\$15,050.00) (†\$14,100.00) and taxes. Leases calculated with finance rate of 4.9%. Rate may change effective December 1st, 2004 and will affect down payment, security deposit, residual value and initiation figures. Dealer may lease for less. *2.9% (**3.9%) purchase financing is available on select 2005 Accords (**2005 CR-Vs and Civics) for up to 36 months. Finance example: \$20,000 at 2.9% (**3.9%) per annum equals \$580.74 (**\$589.59) per month based on a 36 month term. C.O.B. is \$906.64 (**\$1,225.24) for a total of \$20,906.64 (**\$21,225.24). Dealer may sell for less. ††/†/0/448/††/†† Offers valid through November 30th, 2004 at participating dealers only. Does not include Accord Hybrid or Civic Hybrid. See participating dealer for full details. †Recent university or college graduates may be eligible for an allowance of up to \$750.00 on certain models. ††See participating Honda Dealers for complete details.