

# Free Handbook for Home Sellers!

Advertorial

Avoid the selling mistakes that could cost you thousands of dollars. Bill McKeown, Associate Broker, at Remax Blue Springs Realty (Halton) Corp. has prepared "Selling Your Home For All It's Worth".

Inside you'll learn how to sell your home for more money by becoming knowledgeable about how to best prepare your home for sale, what fix-ups to make (and not to make) and what buyers typically look for.

You'll discover what questions you should ask a realtor, what you're supposed to do when an offer comes in and what takes place after the offer has been accepted.

This comprehensive Homeseller's Handbook also contains many other tips, techniques and charts which will help you to sell your property for the most money possible!

As a bonus we've included a complete Moving Checklist... with lists of everything you need to do before and after you list and sell your home.

To obtain your free copy with no obligation call 877-5211 and ask for "the book".



**HALL OF FAME**  
Town & Country Sales Representative

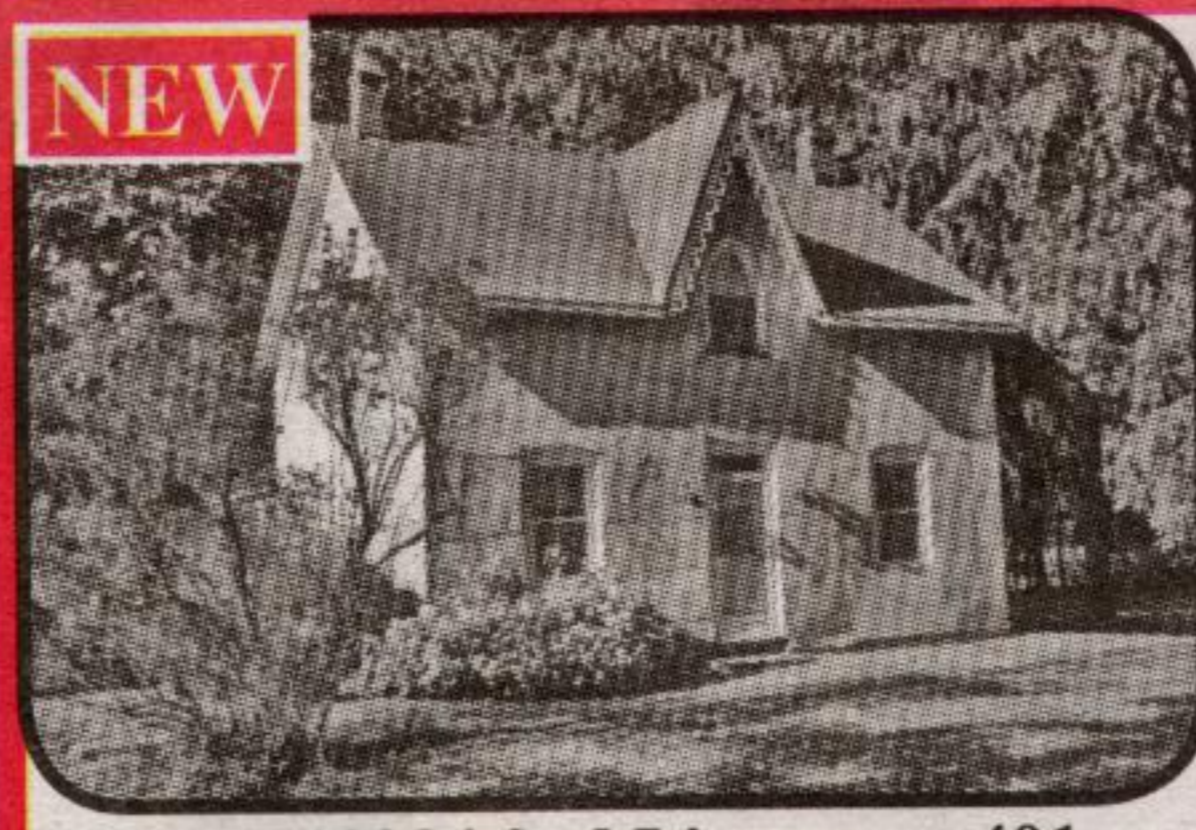


Blue Springs Realty (Halton) Corp.  
**(905) 877-5211**  
**1-800-834-5516**

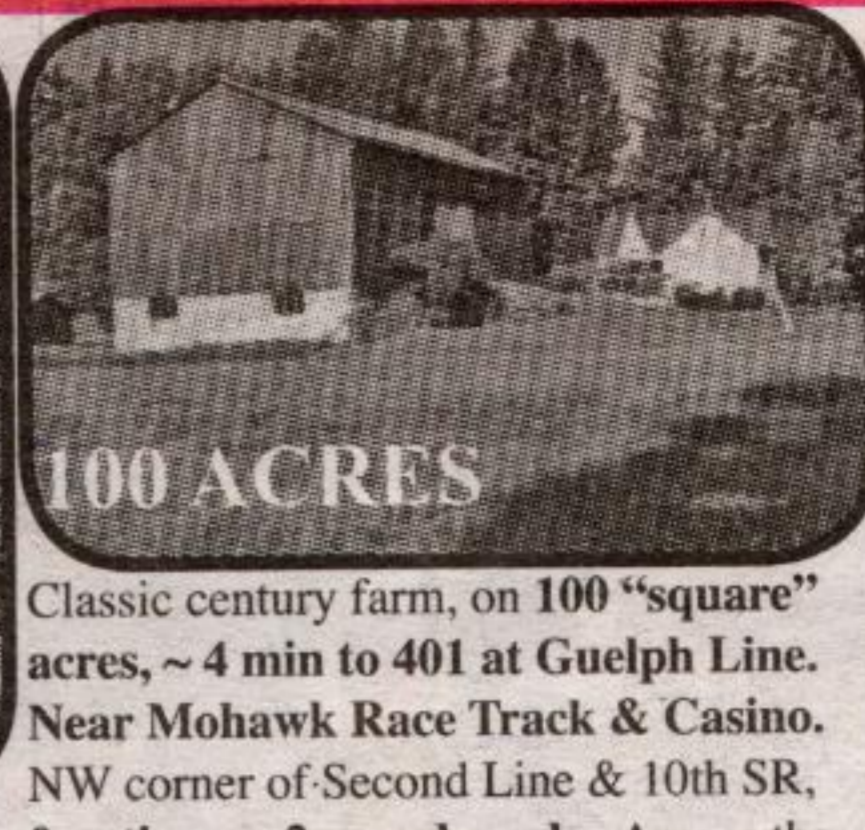
**Directions & Photos**  
<http://maureen.ca>



Acton: 0.144 acres (160ft x 28.47ft) vacant commercial parcel of land at the corner of Main St. N (Hwy 25/7) & Elizabeth St, adjacent to convenience store. Assessed at \$60,000. **\$59,900**

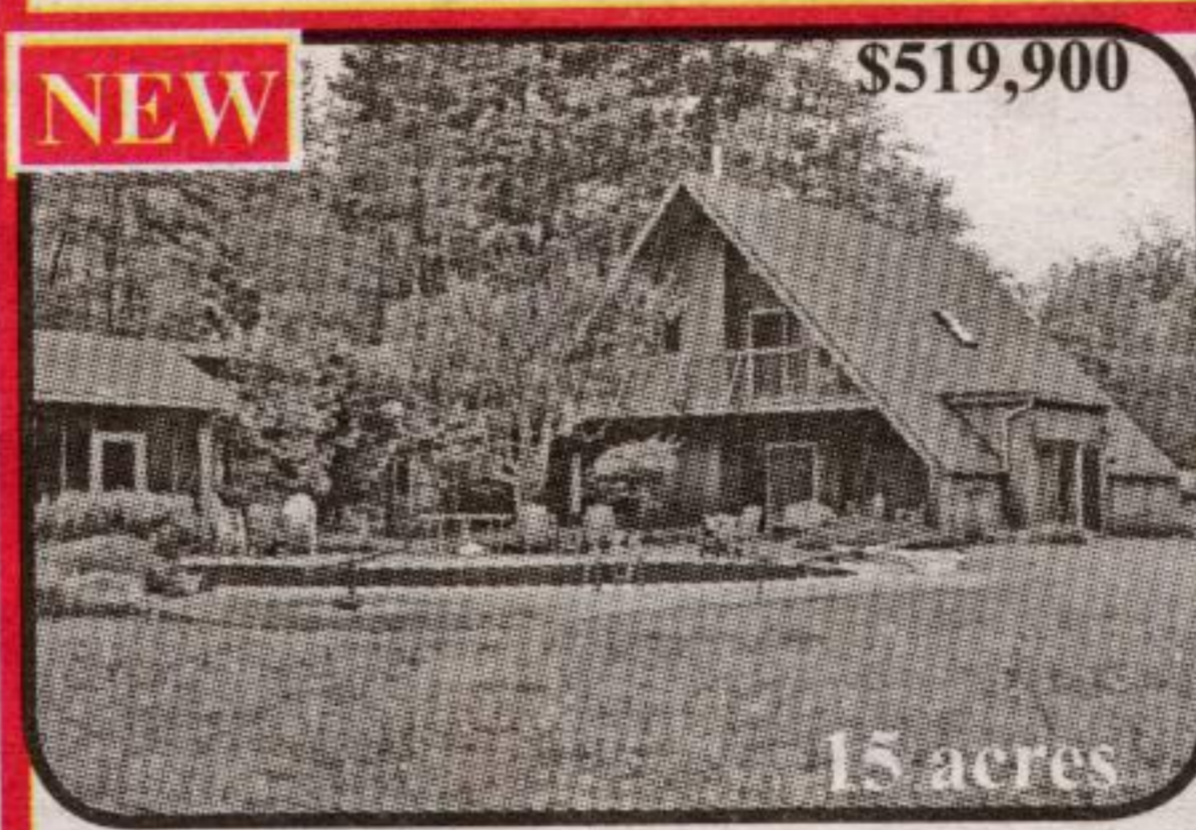


**NEW**  
Milton: 10084 2nd Line, near 401



**100 ACRES**  
Classic century farm, on 100 "square" acres, ~ 4 min to 401 at Guelph Line. Near Mohawk Race Track & Casino. NW corner of Second Line & 10th SR, fronting on 2 paved roads. Across the

rd from Hitherfield Private School. Updated home & barn. 9' ceilings on main floor, hardwood floors, oak kitchen cabinets, main floor laundry, 200 ampere service, septic tank & bed (~ 10yrs), furnace (hot water circulating system) ~ 5 yrs old, etc. Drive shed with 3 bays. Drilled well ~ 70' deep. ~ 50 ac farmed. Flat land, perfect for a horse facility & race track.



**NEW**  
Milton: Unique! Cabana & i/g pool!



**\$519,900**  
15 acres  
Nature lover's Hide Away! Unique, gorgeous, private, open concept, home on 15+ acres on quiet paved road in Milton, South of Hwy 7, West of Acton. 5 bdrms, 2 washrooms. Cement block

construction which can be seen on ceiling of large ~ 23'x 23' garage. Fenced in-ground, heated, kidney shaped, cement pool & cabana with viewing rm. LR & DR with walls of FLOOR TO CEILING WINDOWS. MBR with walk-out to balcony o/l pool. Main WR with whirl tub & sauna. Excellent well. Rock gardens. Fenced pool. Dog run. Trails through woods!

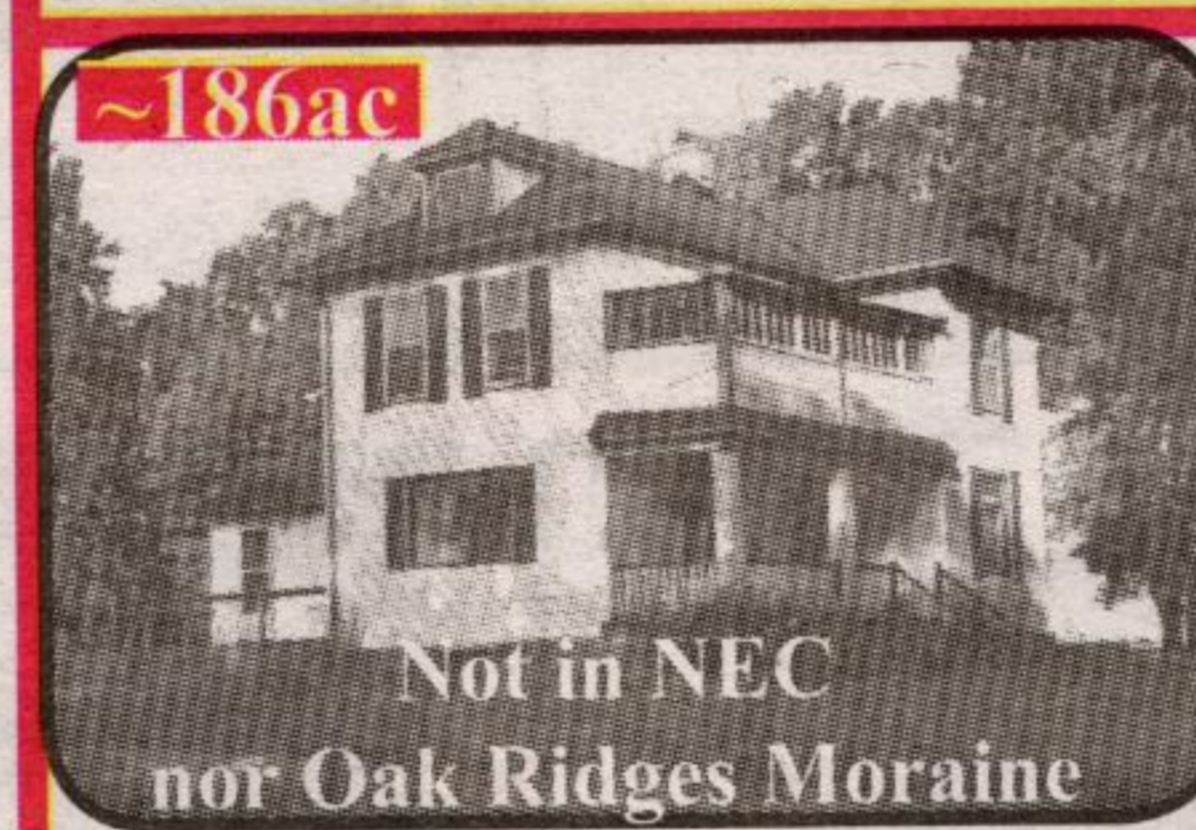


**50 acres Spectacular views**  
N of Erin: 5 bdrms, 5 washrms

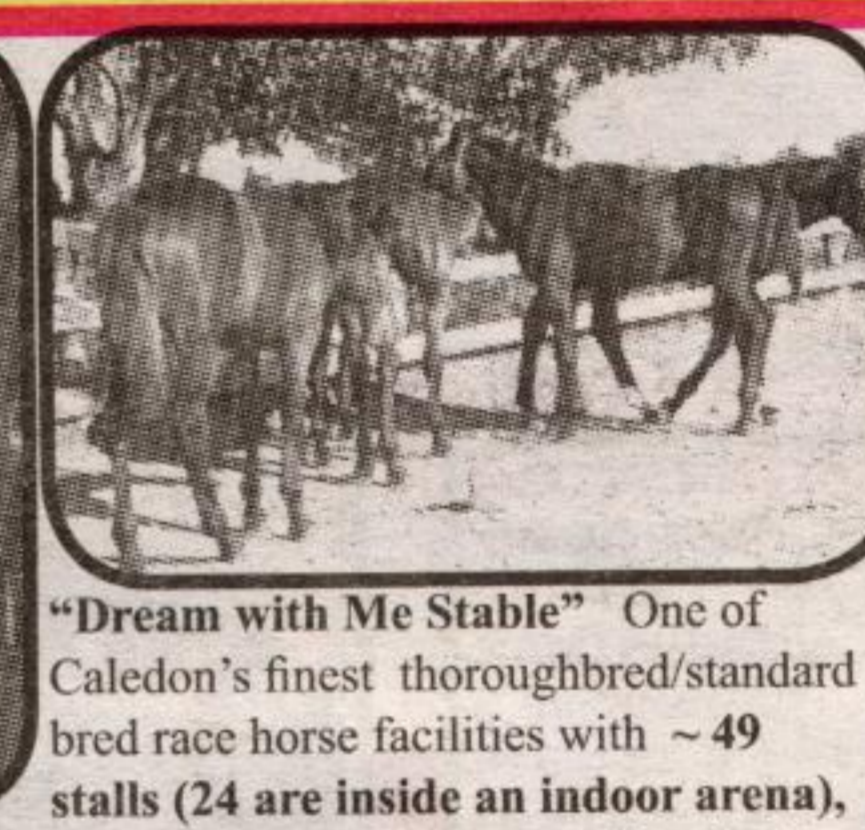


**FAMILY RM: 24' X 19'**  
Fabulous Owen Sound ledge rock & brick home on ~ 50 ac o/l pond & hills to West. Large foyer; high ceilings; huge Family rm with FP & walk-out to large deck; LR(den) with FP; formal

DR: 5 bdrms (2 with ensuite); 5 washrooms (2 with whirl tubs); library & 2 finished recreation rooms. 3 car gar & 2 bdrms built with insulated concrete forms & radiant heat. Black Walnut trees on 30 ac at the rear. Pond. Min to: grade school in Marsville, Belwood Lake, Hillsburgh & all amenities in Orangeville. Just 10 min N of Hillsburgh. **\$699,000**



**~186ac**  
Caledon: 19726 Mountainview Rd.



"Dream with Me Stable" One of Caledon's finest thoroughbred/standard bred race horse facilities with ~ 49 stalls (24 are inside an indoor arena), 4 large barns plus a new office/lab/

breeding barn. 3 tracks (5/8 mile oval thoroughbred track inside standard bred track & a 900 metre straight track), a 6 horse computerized walker/runner, many oak & electrical fenced paddocks, 2 wells, manager's house & 2 staff trailers. 2 road frontages. Between Tamarac Estates & Mono Mills. South of Hwy 9, West of Airport Rd. **~ \$9,000/acre!**



**NEW**  
Georgetown: 70 Prince Charles Dr.



**\$249,900**  
Quaint, curb appeal, character & charm. 3 bedrooms, 2 washrooms, recreation room & garage. Main floor bedroom & 4 piece washroom. 2 large bdrms upstairs. Great recreation

room with wainscoting & dry bar. Upgrades: 3 pc with separate shower; new windows on main floor (bay in LR); mud room in garage; ceramics from the mud room through kitchen; oak kitchen cabinets; new asphalt & deck. Walk to all amenities. Include: window coverings (except verticals), fridge, stove, dishwasher, washer & dryer. Great central location.



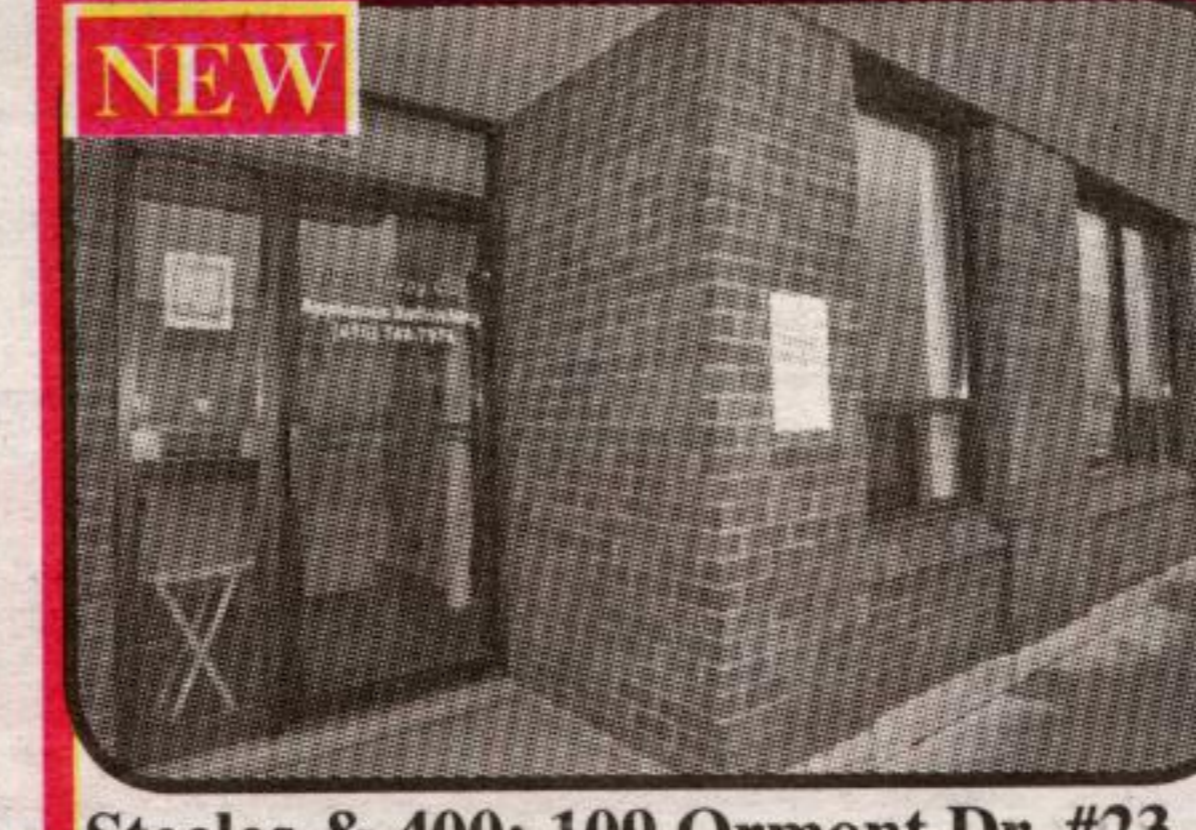
**NEW**  
Meadowvale: 6780 Formentera #70



**\$179,900**  
Spacious, bright, clean, open concept, family sized TH facing & backing onto parkettes in an excellent, renovated complex. 3+1 bdrms, 2 WRs. Fam rm with cathedral ceiling, floor/ceiling, wall/wall windows, FP & walk-out to deck, patio & yard. DR o/l Fam rm. Visitor pkg nearby. Early possession possible. Near Meadowvale TownCentre, GO.



**\$289,000 96.8 AC**  
SOUTHGATE: ON 2 PAVED ROADS. 15 min NW of Shelburne. ~70 ac hay, 25 bush. Almost renovated. W of Shelburne on Hwy 89, N on Grey Road 8 to 106599 Southgate Road 10, NW corner. (Proton)



**NEW**  
Steeles & 400: 109 Ormont Dr. #23



**\$624,900**  
1175sqft industrial unit with new insulated 12'x 12' drive in door, man door & office space. Sanding & painting booths, wash sink, powder room & storage. 550 volts, 3 phase. Heat: radiant gas enclosed. Condo fee: \$143.65/mo, includes: water, snow removal, lawn care, building insurance & 2 designated parking spaces. \$148,800



Halton Hills: Commercial/Res Investment: 3 adjacent, fully leased, zoned (C1 & C1(H)), at corner of Hwy 25 & Knox St. 1/2 acre next to mall on Main Street, N, Acton. (duplex, 2 semis & 1 detached)



## BACKSPLIT BACKING ONTO MAJESTIC RAVINE

Landscaped 146-foot pie-shaped lot. Ground floor family room with log burning fireplace. Walkout to 24 x 20 foot deck. Ground floor study or 4th bdrm. 2 pc. powder room. Large bright eat-in kitchen. Upgraded kitchen cabinetry. Formal dining room - spacious living room. Three bedrooms with hardwood flooring. 4 pc. bath. Upgraded windows. Solid brick & plaster. Air conditioned. Water softener. Double car garage. Double paved drive. Exquisite landscaping. Quiet crescent, located near schools and shopping. **IMMEDIATE POSSESSION. Asking - \$354,900.**



**FRED HARRISON\***  
\*Sales Rep.  
**(905) 873-6218 (905) 454-1100**  
**(416) 993-0862**  
Visit us at <http://www.fredharrison.net>



## ROYAL LEPAGE RCR Realty

**(519) 843-5400**

\* **STEPHANIE MAYE** [www.stephaniemaye.com](http://www.stephaniemaye.com) \* **BRIAN SMITH** [www.rightchoice4u.ca](http://www.rightchoice4u.ca) \* **ERIC vanGROOTHEEST** [www.eric-sells.com](http://www.eric-sells.com)

### STONE HOMES OF FERGUS

STEP BACK IN TIME... History and space abound in these exquisite homes of yesteryear located in the pretty town of Fergus on the Grand River only 1 hour from Toronto.



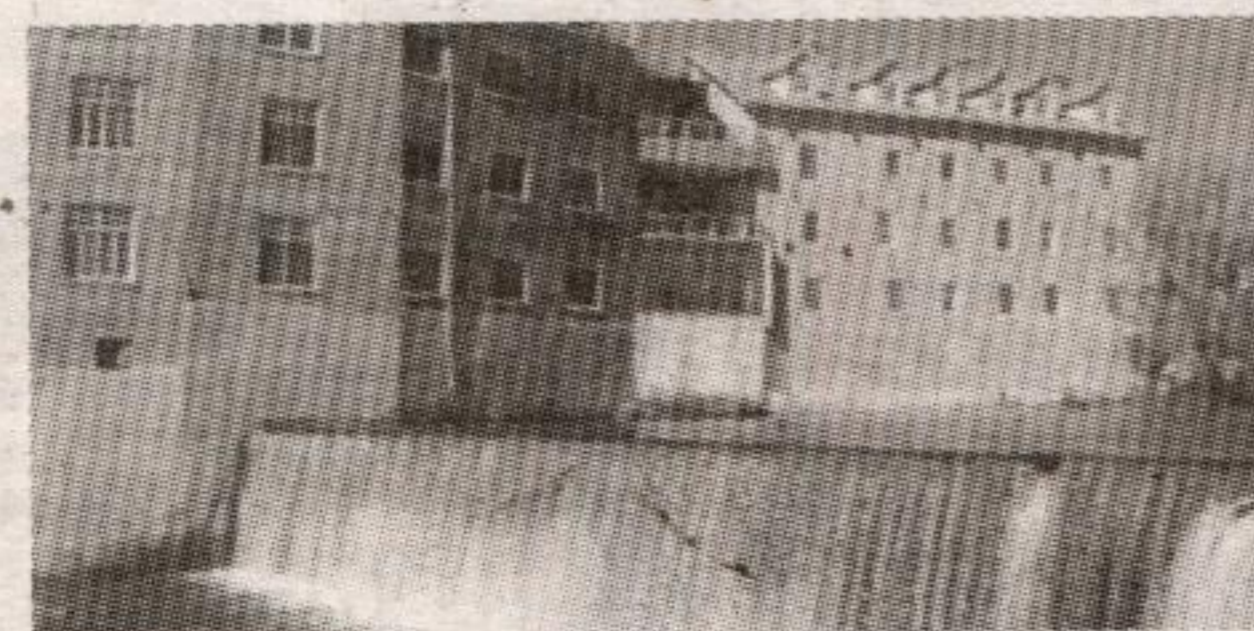
This classic stone house is set on an oversized town lot. From the private yard and gardens to the copper tops and modern marble & granite bthrm, elegance and beauty reign. **\$329,900**  
**OPEN HOUSE - SAT. NOV 20<sup>th</sup> 1-3 PM**



Majestic stone house with all the detailing preserved. Large modern kitchen for chefs, lots of hrdwd & trim, detached garage & workshop, HUGE LOT! **\$339,900**  
**OPEN HOUSE NOV 20<sup>th</sup> & 21<sup>st</sup> 1-3 PM**



Quaint Stone charmer with all the amenities of modern living. Updated, revamped and yet preserved it has 3 bdrms, 3 baths, & a view of fantastic gardens and quiet park. **\$349,900**  
**OPEN HOUSE NOV 20<sup>th</sup> & 21<sup>st</sup> 11 AM-5 PM**



Best location in this converted mill stone condominium! Soaring ceilings, oversized windows, 2 bdrms, 2 baths, almost 1600 s.f. breathtaking view directly overlooking waterfalls. **\$379,900**