

RE/MAX • RE/MAX • RE/MAX • RE/MAX • RE/MAX

RE/MAX BLUE SPRINGS REALTY (HALTON) CORP.
Acton Office 519-853-2086
Toll Free 1-888-833-1945

Heather Scotland** & Leigh Whiting**
 Associate Brokers, C.M.H.M.S.

MEMBER OF RE/MAX 100% CLUB

Heather & Leigh support the Children's Miracle Network

Visit us at www.HeatherAndLeigh.com for full feature sheets & colour pictures



MLS# X561124

CENTURY HOME - \$299,900

This Circa 1890 Century 3 BR, 2 Bath home, once used as the United Church Manse, sits on a large 50 ft x 200 ft lot in the Village of Erin. Features include: Hardwood floors, original wood trim, large Family room addition with beamed ceiling, wood burning stove & walk-out to a deck, Whirlpool Tub, CAC, new windows and detached garage. Roof re-shingled in April 2004.



MLS# W553680

FABULOUS FERNBROOK HOME - \$429,900

This gorgeous 2-storey, 4 bdrm, 3.5 bath "Lakemount" model features a formal living rm, separate dining room w/double tray ceiling, well appointed eat-in kitchen with w/out to the deck and hot tub an adjoining family room with gas fireplace, a home office and sumptuous master suite with a 4 piece bath and adjoining dressing room with extensive built-ins.



NOTHING TO DO - \$269,900

But move into this lovely 2 storey home with double Garage and oversized fenced yard. Features include: an eat-in Kit. with ceramic floors and extra cabinets, main flr Laundry and 2 pc Bath, fin. basement with natural wood paneled Rec Room, 4th Bdrm and 3 pc Bath, and Master Bedroom with semi ensuite. Freshly decorated with new Berber carpets.



MLS# W468745

SPACIOUS AND GRACIOUS \$369,900

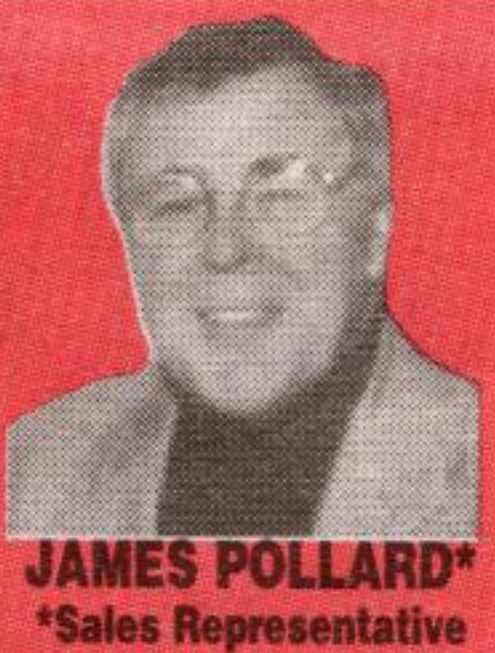
Describes this well maintained 4 BR, 2 1/2 bath traditional home, featuring an open oak staircase, formal living and dining rms with crown mouldings, main floor family rm with gas fireplace, master BR with ensuite and walk-in closet, 2 finished rec rooms and a great kit. with slider walk-out from the breakfast area to a large deck and hot tub.

RE/MAX • RE/MAX • RE/MAX • RE/MAX • RE/MAX

Century 21
 Future Realty Inc.



CATHERINE POLLARD**
 **Broker/Owner



JAMES POLLARD*
 *Sales Representative

116 Guelph St., Georgetown (905) 702-9800 1-888-524-6005



\$339,900

"IN THE COUNTRY FOR CHRISTMAS"

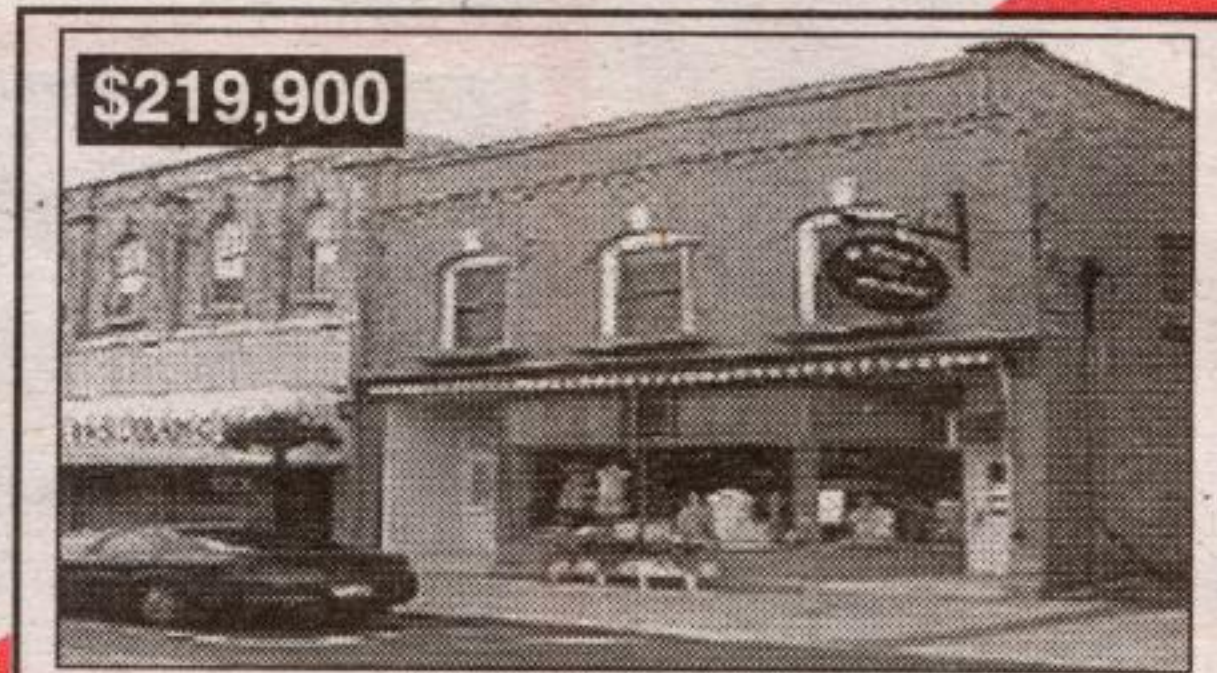
Ski and snowmobile from your back door. Excellent workmanship in custom builder's own home located by the ever flowing river with views of rolling farmland. 3 bedroom, 2 bath, eat-in kitchen with walkout, maple cupboards. Roughed in 3 piece washroom in basement with walkout. Price includes central vac, central air. Ceramics and hardwood floors. All interior bedroom and bathroom walls soundproofed. 15 min to Orangeville and Fergus. South of Hwy. 9.



\$209,900

WONDERFUL HOME IN ELMIRA

Great for home business as this is located on main street in Elmira. Kitchen is loaded with cupboards and has large countertop work area. Yard is private with mature trees, patio, inground heated pool, hot tub and a Zen garden. Garage has loft and heated workshop at rear. Walk to schools and downtown. Jim* or Cathy Pollard*.



\$219,900

"OWNER WANTS OUT BY XMAS"

BUILDING WITH MAIN ST. STORE FRONT IN MOUNT FOREST which rents for \$900 per month. Tenant will stay. Well maintained property with a newer roof, garage, storage and lots of parking at rear plus adjacent Municipal lot. ****Extras**** Nicely decorated 1200 sq. ft. apartment has 2 bedrooms, large living room and dining room plus office. Hardwood floors and 9' and 10' ceilings. \$219,900. Call Jim Pollard*.

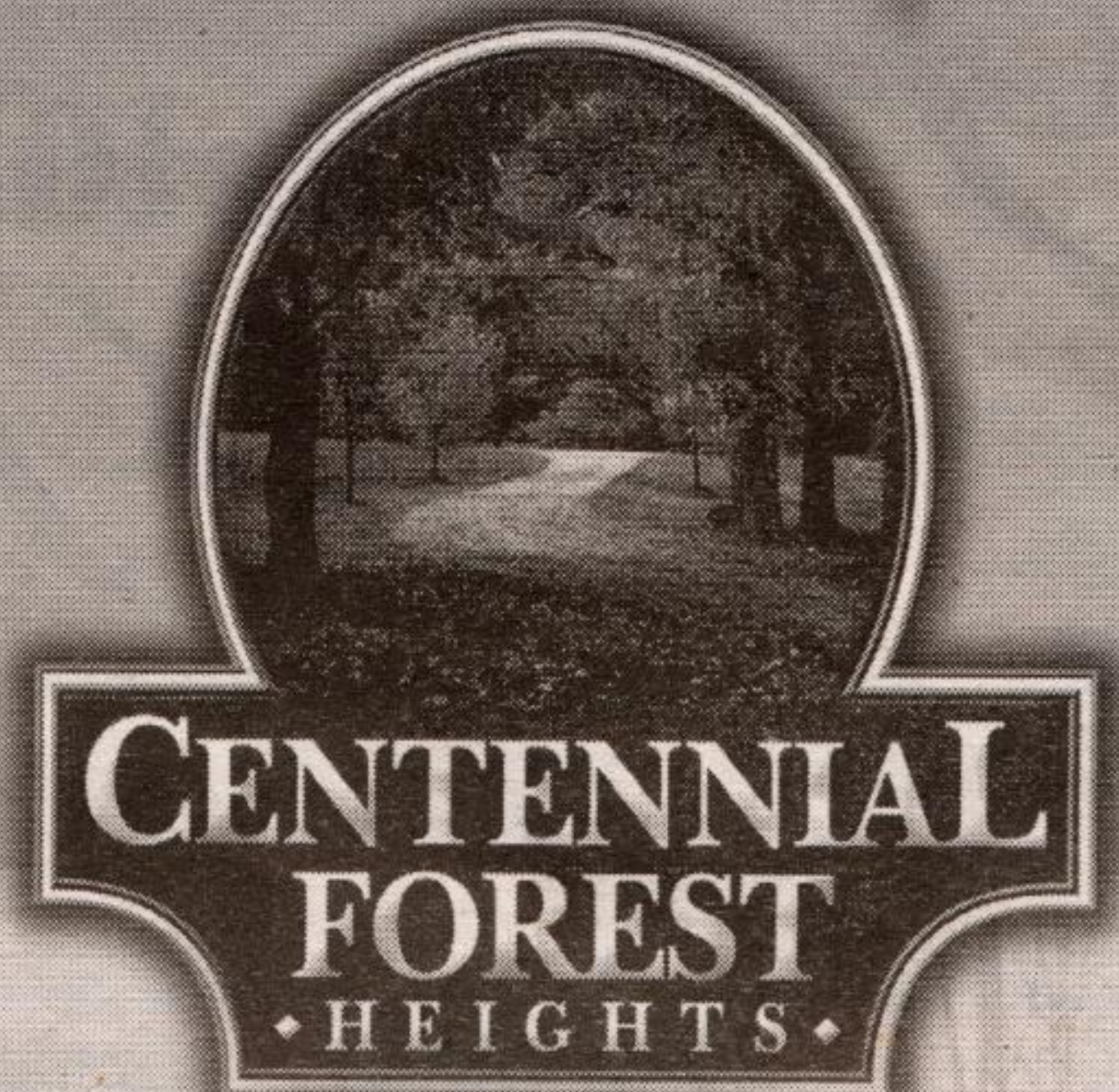
Purchase any of these homes through Jim & Cathy* and receive **1000 BONUS AIR MILES**



Now OPEN

IN THE HEART OF MILTON

Over **50% SOLD!**



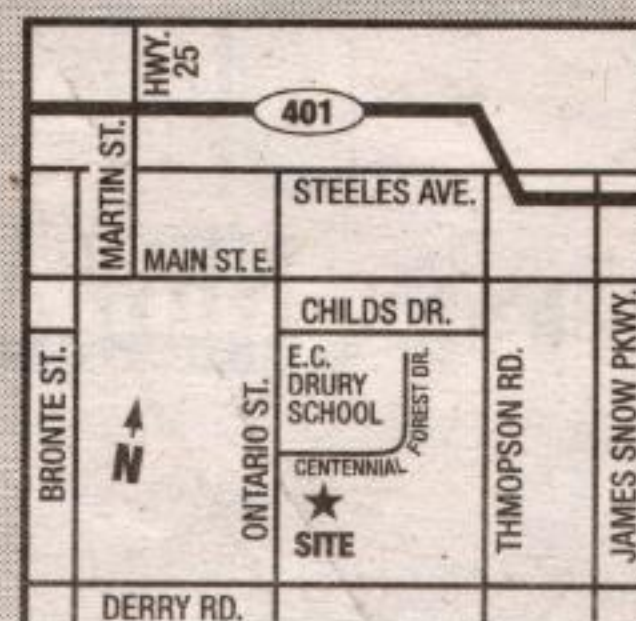
LUXURIOUS ADULT CONDOMINIUM LIVING
 Large Suites from 1200 sq. ft.
\$229,990
 from

Right in the heart of Milton, surrounded by Centennial Forest. Live in a peaceful park enclave setting near Senior's Activity Centre. Just blocks from Milton Town Centre and all amenities including GO Station. It's everything you've ever wanted.

905-693-1999



www.delridgehomes.com



Presentation Centre Hours:
 Sat.-Wed. 12-5, Thurs.-Fri. by appointment

Illustrations and model are artist's concept. Specifications, availability and prices subject to change without notice F.&O.E.