

- **RE/MAX HALL OF FAME**
- **RE/MAX 100% CLUB**
- **REALTOR MEMBER OF THE YEAR****
- **19 YEARS OF COMPETENT PROFESSIONAL SERVICE**
- **CALL FOR A FREE, NO OBLIGATION MARKET EVALUATION TODAY**

**1998

*Sales Rep.

MARIA
Britto

A PROFESSIONAL REALTOR WITH A PROVEN TRACK RECORD
"Selling Homes Daily"

RE/MAX REALTY SPECIALISTS INC.



Named Business Person of the Year 2002 by The Brampton Board of Trade

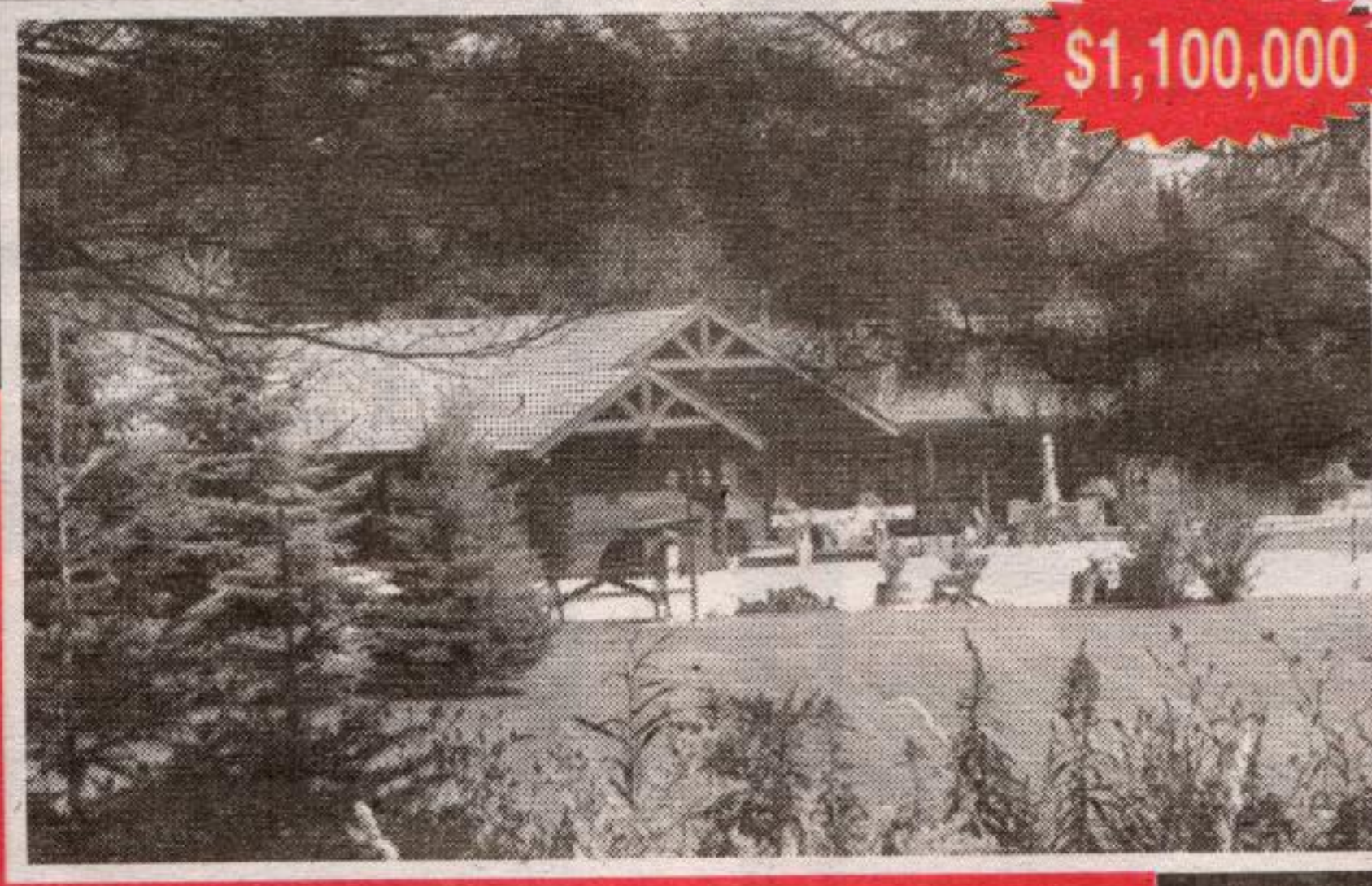
Georgetown Line 905 **873-9255** Toronto Line 905 **456-3232**



\$1,200,000

94.5 ACRES BETWEEN FERGUS AND ORANGEVILLE

This beautiful parcel of land has two beautiful ponds, a custom built log home (brand new, never lived in) with an incredible, panoramic view of the large pond and the lush vegetation. The magnificent 'TRUE NORTH' log home is situated at the highest point of the property with views on all sides. There is a heated 36' x 56' heated 'HOULE' steel workshop to die for, complete with washroom and loads of storage and work space. The main log home has a walkout basement and just over 1800 square feet on the main level with an incredible open concept with a loft, 3 bedrooms, 3 bathrooms and all the modern amenities. A rare find for spectacular parcel of land and home.



\$1,100,000

CALEDON CUSTOM LOG HOME ON 10 ACRES

This incredible custom built log home is ideal for those wanting the tranquility of the country and an awesome log home on a manicured, picturesque 10 acres. The property is like a park with a pond, huge raised deck with hot tub and amazing log sauna, wrap around verandah, rock gardens, manicured lawns, child's playhouse, garden shed. This property is completely fenced with electric entry gates. The home is approximately 2500 square feet of main level space and a professionally finished basement is loads of added living space. An absolute gem and truly one of a kind.



\$289,900

GEORGETOWN SOUTH

This home has been well maintained and freshly painted in modern neutral tones. Bright eat-in kitchen with upgraded cabinets and walkout to beautiful large raised deck and manicured, mature garden. The living and dining room combination has french doors and open to the family room complete with corner fireplace and laminate floors. The 3 bedrooms on the second floor are spacious and well decorated. The basement is partially finished, partitioned and drywalled. New windows throughout. A great deal in a great neighbourhood.

THESE HOMES CAN BE VIEWED AT www.mariabritto.com or MLS.ca

OPEN HOUSE
SUNDAY, NOVEMBER 7, 1:30 - 4:00 P.M.
33 SEEDHOUSE LANE (Mountainview & Maple)



NEARLY NEW VICTORIA STATION TOWNHOME

Award-winning Mattamy Sugar Maple. 1630 sq. ft., 3 bedrooms, master ensuite, W/I closets, open concept kitchen/family room with appliances. Finished rec room with walkout. Entry from garage. Good parking. Walk to GO train, high schools. Immediate Possession **PRICED AT \$249,900**



FRED HARRISON*

*Sales Rep.

(905) 873-6218 (905) 454-1100
(416) 993-0862

Visit us at <http://www.fredharrison.net>

Sutton GROUP
PROFESSIONAL REALTY INC.



Mary Maan*
*Sales Rep.



Johnson Associates
HALTON LTD., REALTOR



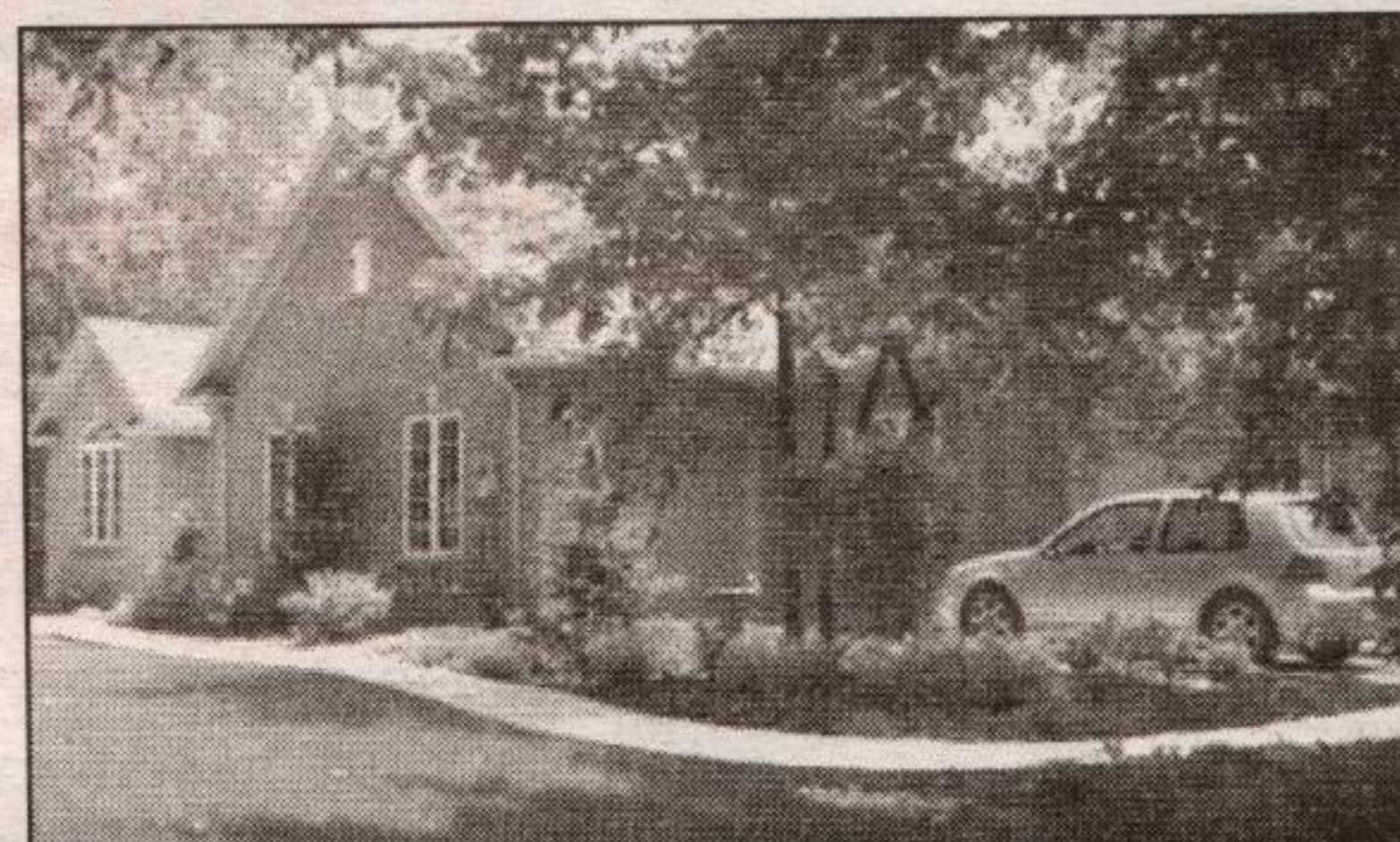
Tony Maan*
*Sales Rep.

www.Haltonhomesearch.com

905-877-5165 Mississauga **905-874-3040**

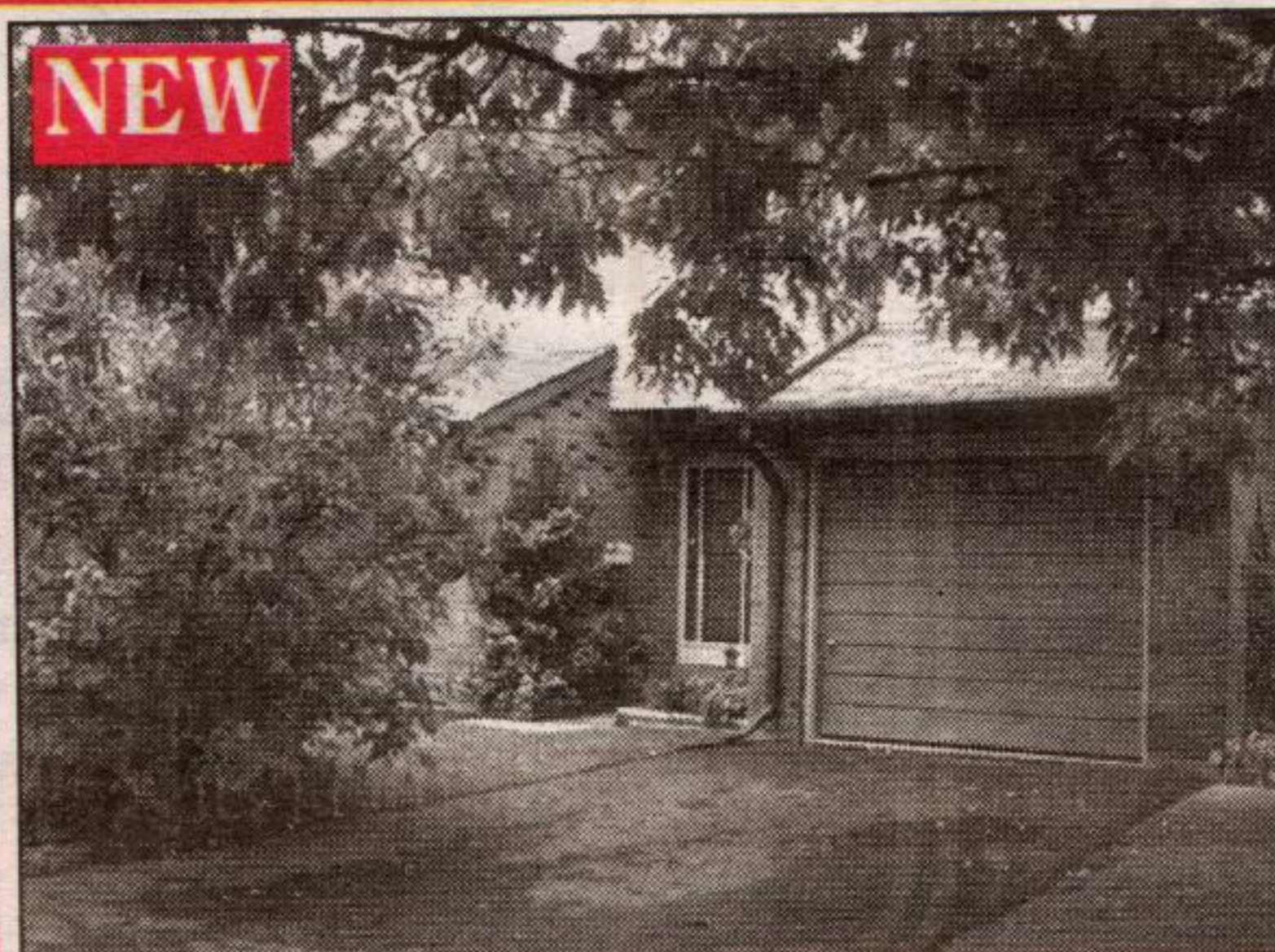
OPEN HOUSE - SUNDAY, NOVEMBER 7th...2 - 4pm
14 MORGAN DRIVE, HALTON HILLS.....\$629,000

Hwy #7 to Dublin Line, north to 32 Sdrd (Erin/Halton Townline) stop sign. Left to Morgan



- Country subdivision
- 4 years new
- Open concept
- Brick bungalow on premium private lot
- Over \$100,000 in landscaping
- 2 up & 2 down bedrooms
- Custom Barzotti kitchen
- Sunken great room
- Open concept
- "Charleston" built
- Breathtaking views from every window
- Numerous upgrades

Come and view!



NEW

WALK-OUT CONDO \$198,500

Well looked after and tastefully decorated home with newer carpets, windows, finished rec room with a walkout to green space, 3 bedrooms, master bdrm with ensuite, another walkout to a balcony, all appliances included, added bonus of a garage! Mary* or Tony*. MLS# W559619

04-666-30