

**ERIN HILLSBURGH ROCKWOOD CALEDON**

**NEW**  
**TOO NEW FOR PHOTO**

**3 Plus 1 Bedroom Raised Bungalow...**  
2 baths, double car garage, inground pool. Large 1 plus acre property in Erin. Call Carol\* or Tony\* for details.

**NEW PRICE \$329,000**

**Stunning 3 Year New Townwood Built Home...**  
in West Brampton. Gorgeous eat-in kitchen, 3 bedrooms, 3 bathrooms, separate living, dining & family rooms, main floor laundry, IBM Smart home computer wired. Call Tony\* or Carol\* to view.

**\$309,900**

**Relax... Enjoy...**  
watching the birds in this beautiful raised bungalow. Walkout basement on 66 x 132 ft lot backing onto conservation. Features include eat-in kit. with cathedral ceiling, oak cabinets & walkout to covered deck, cathedral ceiling in the living room & dining room, 4 bedrooms & 2 baths. Rec room has walkout to very private yard.

**\$289,888**

**Situated In Tranquil Village of Glen Williams**  
This charming home with character sits on a large mature, fully fenced lot. Vendor has done numerous upgrades in past 3 years including plumbing, wiring and beautiful hardwood floors on main level. Garage/workshop is 27' x 24' with 200 amp service and plenty of parking. Call Tony\* or Carol\* for more info about upgrades and showings.

**\$599,000**

**Absolutely Incredible Home**  
On Lake Simcoe at Bayshore Village just minutes from Orillia. 132 feet of waterfront with westerly exposure. This 2800 sq. ft. three bedroom bungalow has everything you could want or need. Call Tony\* or Carol\* for details.

**\$194,500**

**1 Bedroom Plus Den Condo**  
Fridge, stove, washer, dryer included. Beautifully decorated in much sought after building in Georgetown. **ONE underground parking space.** Pets allowed. Quick closing available. Call Carol\*\* or Tony\* for details.

**FOR RENT**

1 bedroom condo for rent in the "Sands". \$950 plus hydro, tel. & cable. Underground parking. Available Oct. 15. Call Carol\* or Tony\*.



**CAROL & TONY WALRAVEN**  
\*\* Associate Broker \*Sales Representatives  
**RE/MAX**  
Blue Springs Realty (Halton) Corp. **905-877-5211**  
www.walraventeam.com



**MISSISSAUGA ERIN HILLSBURGH ROCKWOOD**



**Bonnie Sturgeon, Sales Rep.**  
519-833-2099



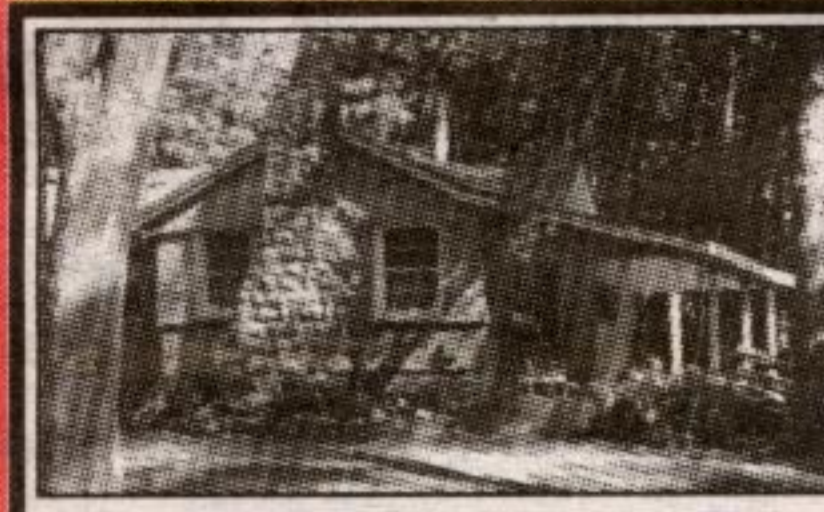
Blue Springs Realty (Halton) Corp.  
**905-877-5211**  
**1-800-834-5516**  
For more go to [www.lizcrighton.com](http://www.lizcrighton.com)



**Liz Crighton, Sales Rep.**  
905-702-7694



**\$241,000**  
**ERIN, 3 BEDROOM, LARGE FENCED LOT**  
Walking distance to everything, schools, shops, community center, trails, bright and spacious home. Large country kitchen and beautiful open concept living room. The energy efficient gas stove warms the entire home and soul too! Huge fully fenced backyard with great deck for fun and entertaining. **MLS#X544864 338-04**



**PRIVATE SHARE OFFERING \$295,000**  
Tangible, beautiful and fun for the whole family. The Caledon Lake Company Limited founded in 1889 as a gentleman's fishing resort by 35 avid sportsmen has maintained 146 acre property, private lake, privacy and beauty owned equally by 34 families. Steeped in history, one precious cottage is presently for sale. Five minutes south of Orangeville, just off Hwy 10. This rare find may be the answer to a year round recreational spot without the long, slow drive up the 400! **MLS#W543889 337-04**



**96 ACRE FARM IN GREAT LOCATION OF ERIN \$829,000**  
96 Acre property, south of Erin Village on 9th line (it is a quiet but Paved Rd). This 4 bdrm Victorian stands proud surrounded by the prettiest views in the most sought after location of the County! **Fully equipped Equestrian facility** - Barn/lighted riding area/ indoor arena/staff house/drive shed/3 large paddocks, trails/woods/ streams/ponds/3 fields currently producing hay, 3 additional fields lying fallow. 3 Minutes to the Village, 15 minutes to the GO train - Come See! **253-04**



**\$328,000**  
**ERIN, ERIN, ERIN**  
Bring your family to the Village of Erin, and enjoy a lifestyle that you thought was over with the last episode of the Brady Bunch! Walking distance to everything: schools, shops, Community Center, parks and trails. This home was built in the early 70's and boasts wide hallways, large closets, bright sunny and open rooms. Currently this home provides two family living, but this spacious 4 level backsplit could be easily converted back to a large one family home. The back yard is large and private and backs on to the protected West Credit River. Miles of trails to explore and your privacy guaranteed! Come and See! **330-04**



**PRIVATE, QUIET, PRETTY IN THE HILLS OF ERIN \$599,000**  
Designed for those who enjoy entertaining inside and outside! Approx. 3500 sq. ft. of living space, this open concept home was built in 1989 with only top grade materials, and the owners gave particular detail to energy efficiency. Situated on 9.94 private (really private and quiet) acres this home enjoys views of the pond and woods beyond from almost every room. Please also note the 32' x 48' fully insulated **Work shop.** Come for a drive, see the colours, buy this House! **323-04**



**Maureen Plucinsky B.Sc.**

**HALL OF FAME**  
Town & Country Sales Representative



Blue Springs Realty (Halton) Corp.  
**(905) 877-5211**  
**1-800-834-5516**

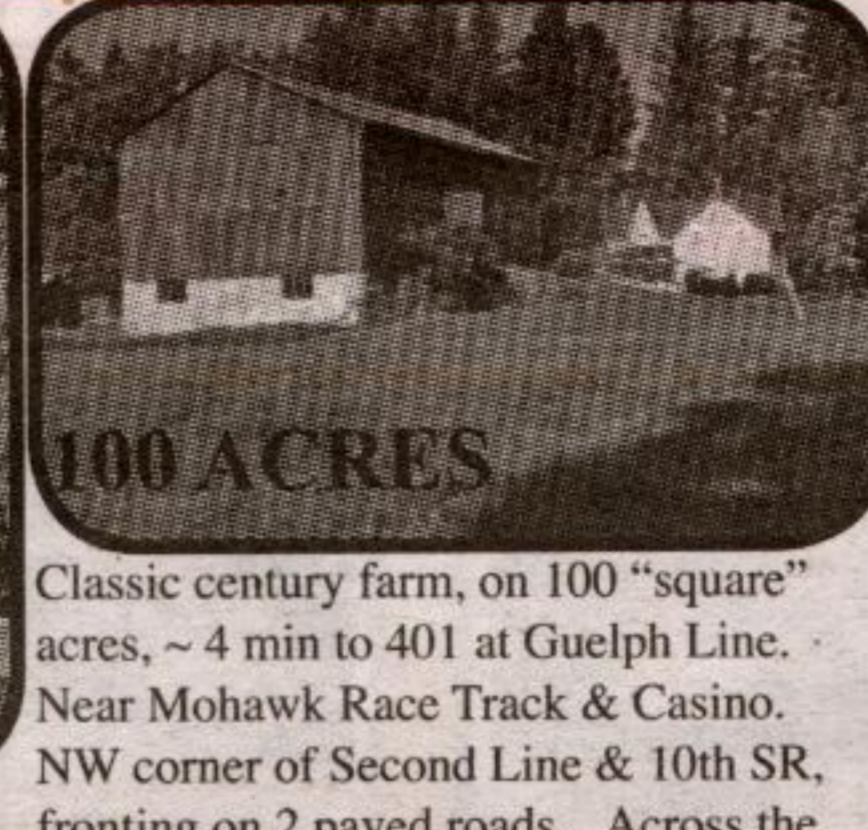
**Directions & Photos**  
<http://maureen.ca>



**Acton: 0.144 acres (160ft x 28.47ft) vacant commercial parcel of land** at the corner of Main St. N (Hwy 25/7) & Elizabeth St. adjacent to convenience store. Assessed at \$60,000. **\$59,900**



**Milton: 10084 2nd Line, near 401**



**100 ACRES**

Classic century farm, on 100 "square" acres, ~ 4 min to 401 at Guelph Line. Near Mohawk Race Track & Casino. NW corner of Second Line & 10th SR, fronting on 2 paved roads. Across the

rd from Hitherfield Private School. Updated home & barn. 9' ceilings on main floor, hardwood floors, oak kitchen cabinets, main floor laundry, 200 ampere service, septic tank & bed (~10yrs), furnace (hot water circulating system) ~ 5 yrs old, etc. Drive shed with 3 bays. Drilled well ~ 70' deep. ~ 50 ac farmed. Flat land, perfect for a horse facility & race track.

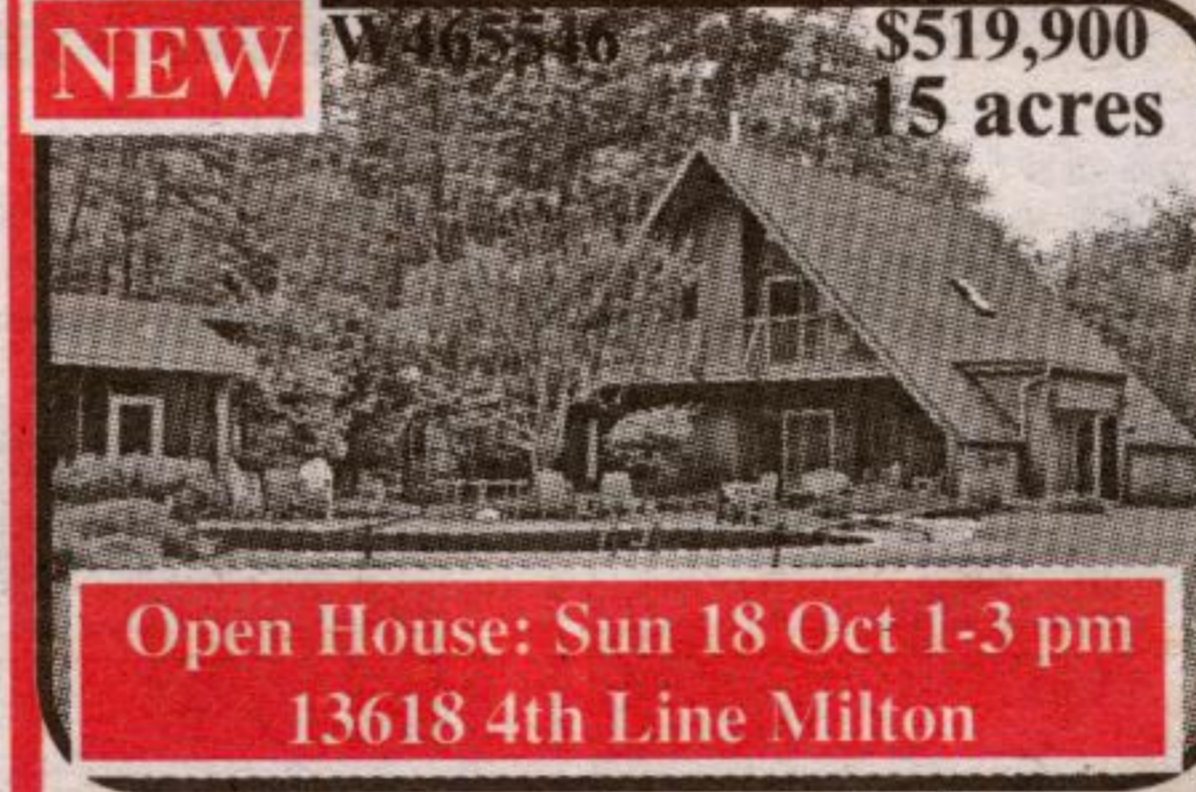


**Inglewood, Caledon: 5bdrm, 1.5 acre**

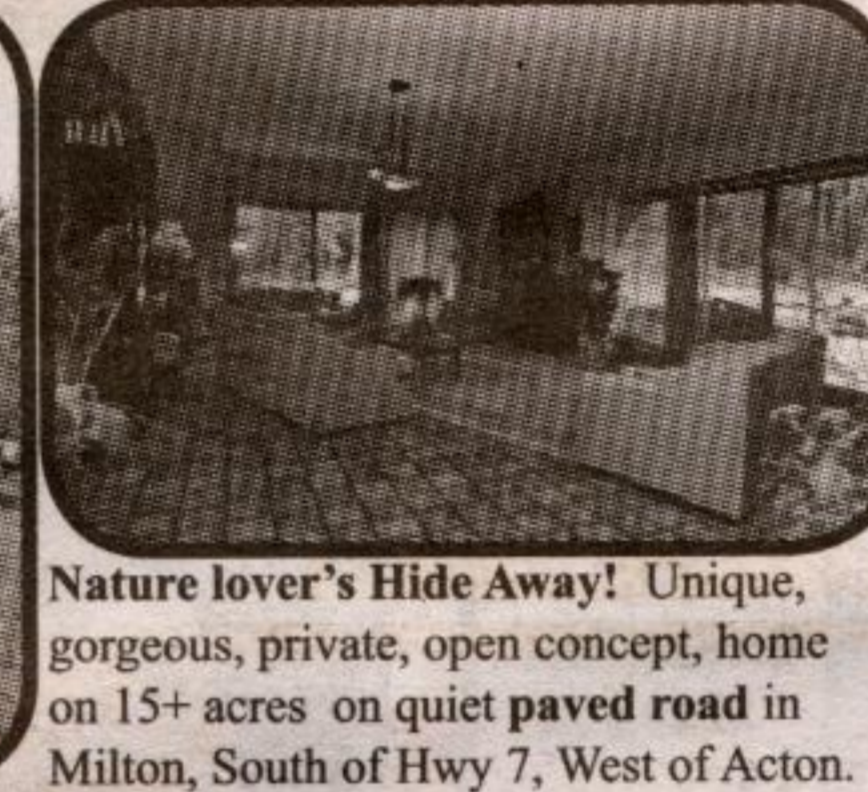


**Exquisite Alba Stone brick, 5 bdrm, 4+washrm, 4 car gar on 1.5 acre with municipal water & nat gas! Granite, hrdwd & ceramic floors. Grand foyer with granite floor & finely crafted solid**

oak staircase, w open risers & twin balconies, spanning 3 floors. Open concept LR, raised piano conservatory & DR. Kitchen with large breakfast area o/l solarium & Family rm with coffered ceiling, wall of windows & gas FP. **Huge MBR w opulent ensuite & w/o.** Low "E" vinyl windows. 1000+ft TREX deck with spa. Gorgeous landscaping. Fab views. 20 min to airport.



**Milton: Unique! Cabana & i/g pool!**



**Nature lover's Hide Away! Unique, gorgeous, private, open concept, home on 15+ acres on quiet paved road in Milton, South of Hwy 7, West of Acton. 5 bdrms, 2 washrooms. Cement block**

construction which can be seen on ceiling of large ~ 23' x 23' garage. Fenced in-ground, heated, kidney shaped, cement pool & cabana with viewing rm. **LR & DR WITH WALLS OF FLOOR TO CEILING WINDOWS.** MBR with walk-out to balcony o/l pool. **Main WR with whirl tub & sauna.** Excellent well. Rock gardens. Fenced pool. Dog run. Trails through woods!

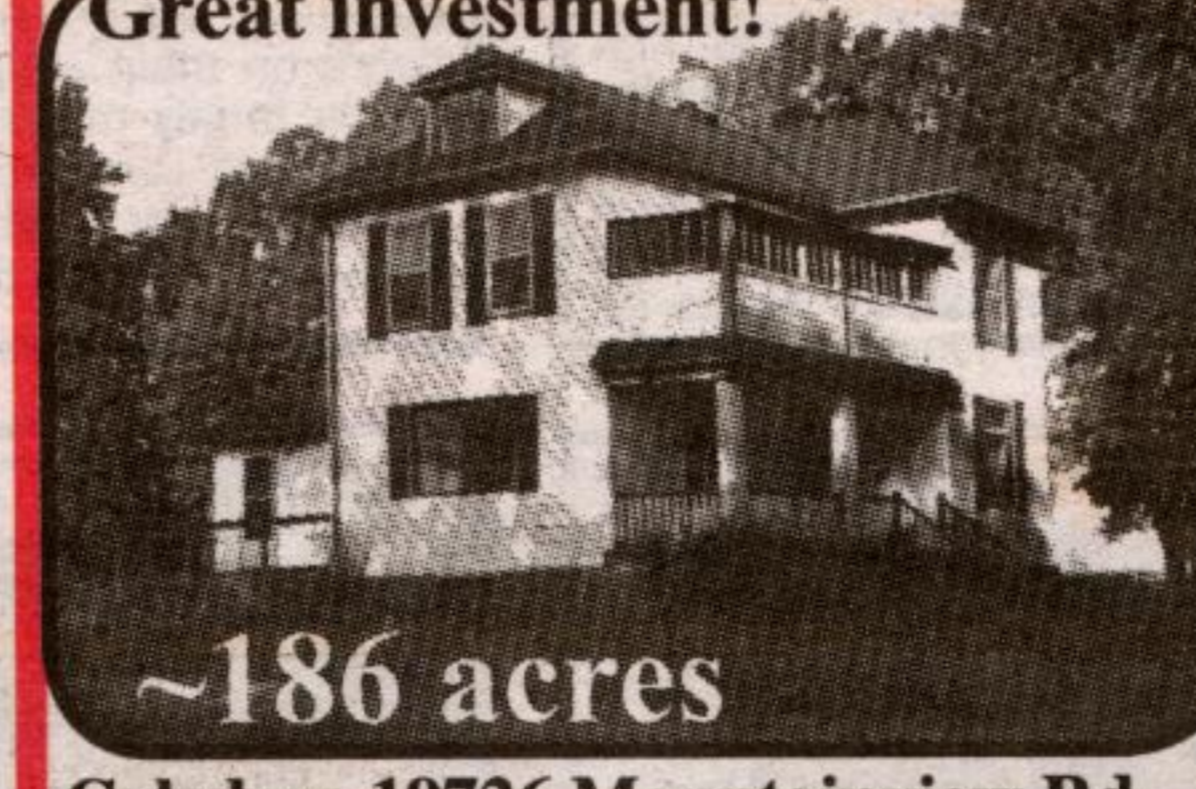


**N of Erin: 5 bdrms, 5 washrms**

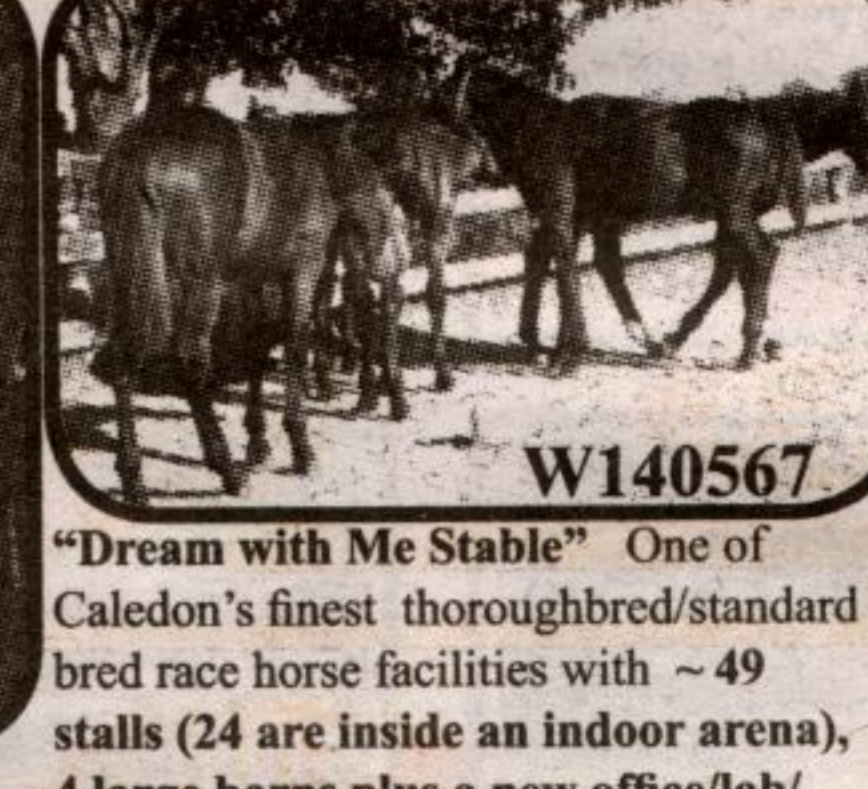


**Fabulous Owen Sound ledge rock & brick home on ~ 50 ac o/l pond & hills to West. Large foyer, high ceilings; huge Family rm with FP & walk-out to large deck; LR(den) with FP; formal**

**DR; 5 bdrms (2 with ensuite); 5 washrooms (2 with whirl tubs); library & 2 finished recreation rooms. 3 car gar & 2 bdrms built with insulated concrete forms & radiant heat. Black Walnut trees on 30 ac at the rear. Swim-in pond. Min to: grade school in Marsville, Belwood Lake, Hillsburgh & all amenities in Orangeville. Just 10 min N of Hillsburgh. \$699,000**

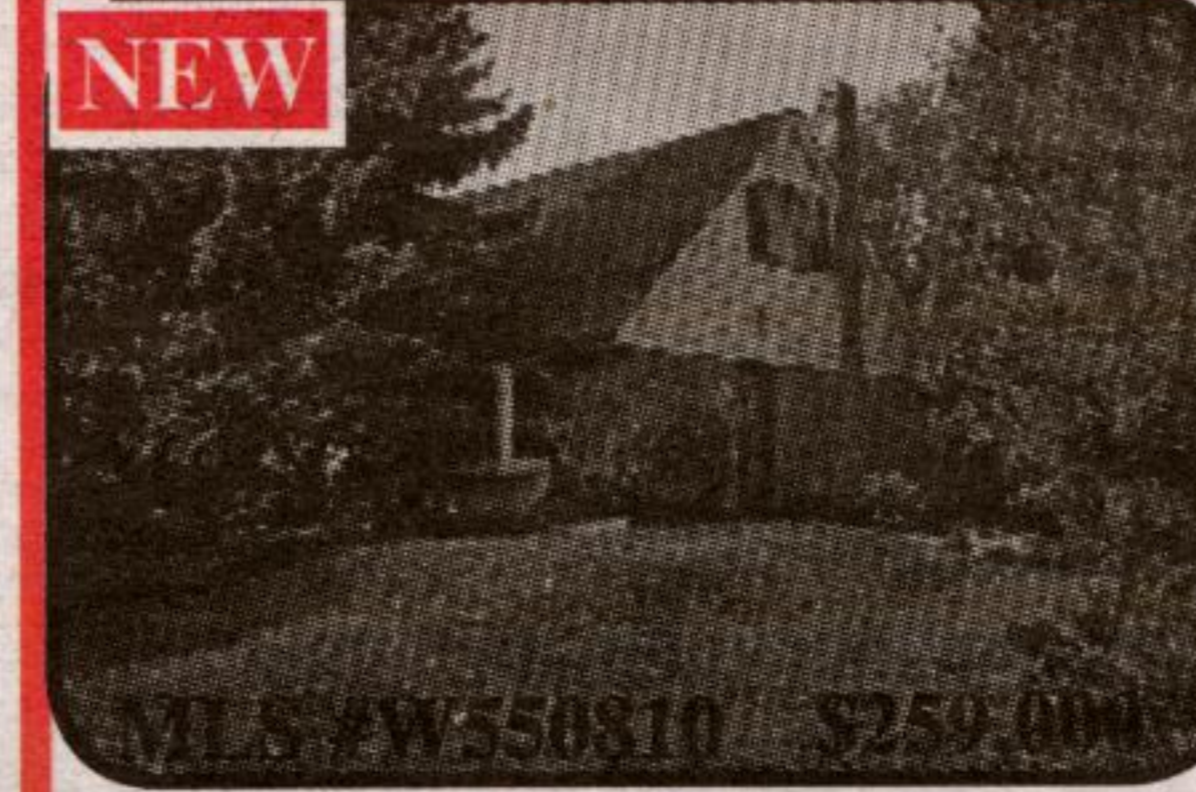


**Caledon: 19726 Mountainview Rd.**

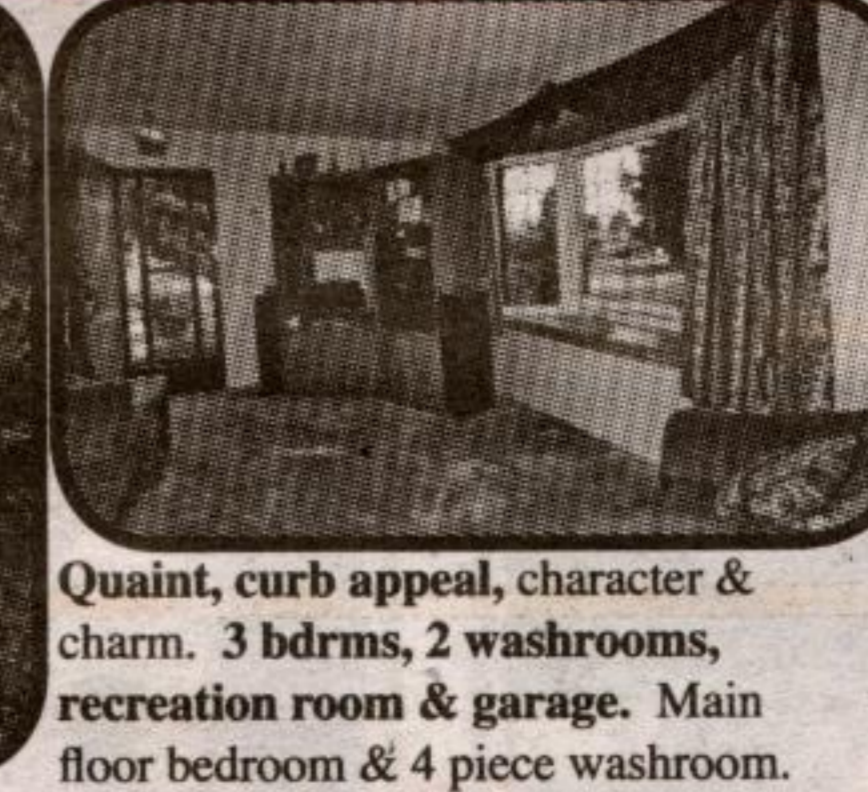


**4 large barns plus a new office/lab/**

**breeding barn. 3 tracks (5/8 mile oval thoroughbred track inside standard bred track & a 900 metre straight track), a 6 horse computerized walker/runner, many oak & electrical fenced paddocks, 2 wells, manager's house & 2 staff trailers. 2 road frontages. Between Tamarac Estates & Mono Mills. South of Hwy 9, West of Airport Rd. < \$10,500/acre!**



**Georgetown: 70 Prince Charles Dr.**

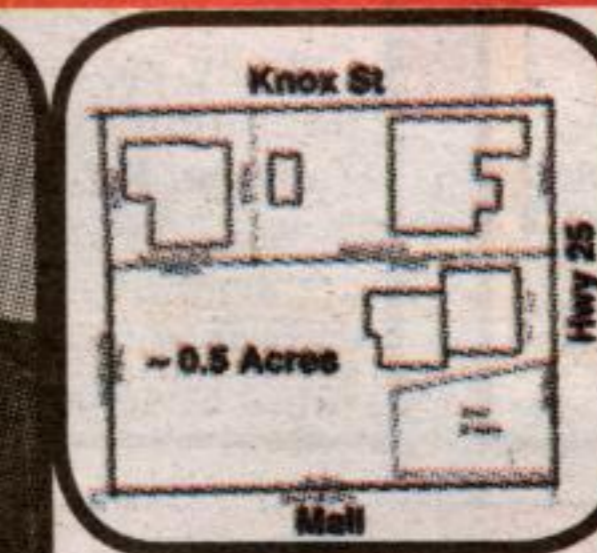


**Quaint, curb appeal, character & charm. 3 bdrms, 2 washrooms, recreation room & garage. Main floor bedroom & 4 piece washroom. 2 large bdrms upstairs. Great recreation**

room with wainscoting & dry bar. Upgrades: 3 pc with separate shower; new windows on main floor (bay in LR); mud room in garage; ceramics from the mud room through kitchen; oak kitchen cabinets; new asphalt & deck. Walk to all amenities. Include: window coverings (except verticals), fridge, stove, dishwasher, washer & dryer. Great central location.



**Acton: Commercial/Res Investment:**



3 adjacent, fully leased, zoned (C1 & C1(H)), at corner of Hwy 25 & Knox St. 1/2 acre next to mall on Main St, North, Acton.



**SOUTHGATE: ON 2 PAVED ROADS.** 15 min NW of Shelburne. ~70 ac hay, 25 bush. Almost renovated. W of Shelburne on Hwy 89, N on Grey Road 8 to 106599 Southgate Road 10, NW corner. (Proton)