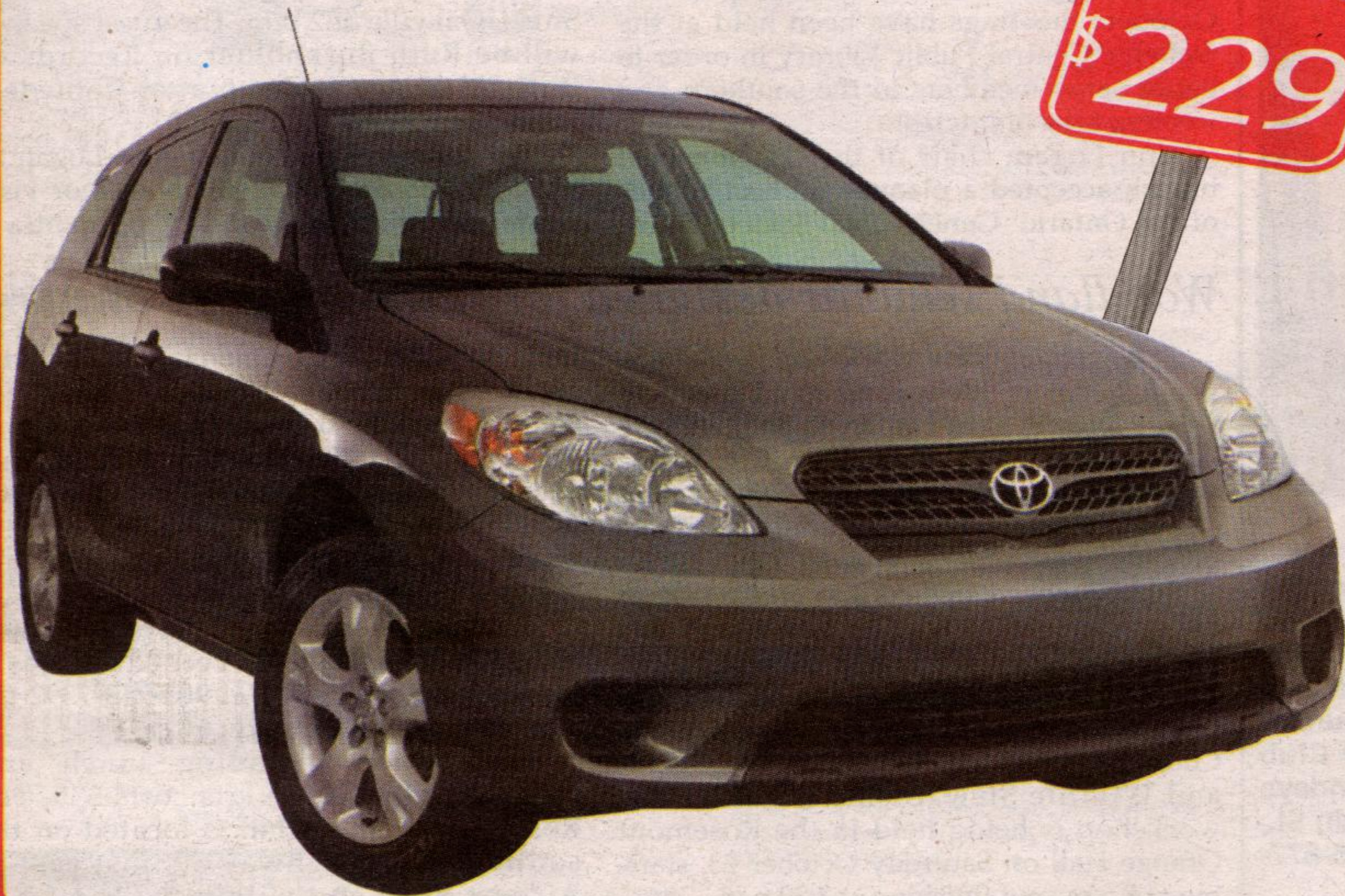


**TOYOTA**  
**'05 DRIVE**



**TOYOTA**  
**LEASE FOR**  
**\$229\***

**2005 Matrix**

**\$19,630 MSRP**

**LEASE FOR \$229\* PER MONTH FOR 48 MONTHS WITH \$2,636 DOWN FREIGHT AND P.D.E. INCLUDED**

**Fuel consumption:**  
Hwy 5.9L/100 km (48 mpg)  
City 7.9L/100 km (36 mpg)

- 1.8 L, 130 hp engine • 5-speed manual transmission • Air conditioning
  - AM/FM Stereo CD • 16" Aluminum alloy wheels • Tilt steering
  - Keyless entry with hatch release
  - Power locks • Driver and passenger airbags • 60/40 split folding rear seat
- Plus, receive \$100 tax credit for fuel conservation.**

**2005 Corolla CE**

**\$17,500 MSRP**

**LEASE FOR \$205\* PER MONTH FOR 48 MONTHS WITH \$2,628 DOWN. FREIGHT AND P.D.E. INCLUDED.**

**Fuel consumption:** Hwy 5.3L/100 km (53 mpg).  
City 7.1L/100 km (40 mpg).

- 1.8 L, 130 hp engine • 5-speed manual transmission
- Air conditioning • Tilt steering • AM/FM Stereo CD
- Keyless entry • Power locks and mirrors
- 60/40 split folding rear seat • Driver and passenger airbags
- Outside temperature gauge

**Plus, receive \$100 tax credit for fuel conservation.**

**TOYOTA**  
**LEASE FOR**  
**\$205\***

**2005 Camry LE**

**\$24,950 MSRP**

**LEASE FOR \$299\* PER MONTH FOR 48 MONTHS WITH \$3,579 DOWN FREIGHT AND P.D.E. INCLUDED**

**Fuel consumption:**  
Hwy 6.4L/100 km (44 mpg)  
City 10.0L/100 km (28 mpg)

- 2.4 L, 160 hp engine
- 5-speed automatic transmission
- Air conditioning
- Power windows, locks and mirrors
- AM/FM Stereo CD
- Keyless entry with trunk release
- Cruise control
- 60/40 split folding rear seat

**TOYOTA**  
**LEASE FOR**  
**\$299\***

**2005 Echo Hatchback**

**\$12,995 MSRP**

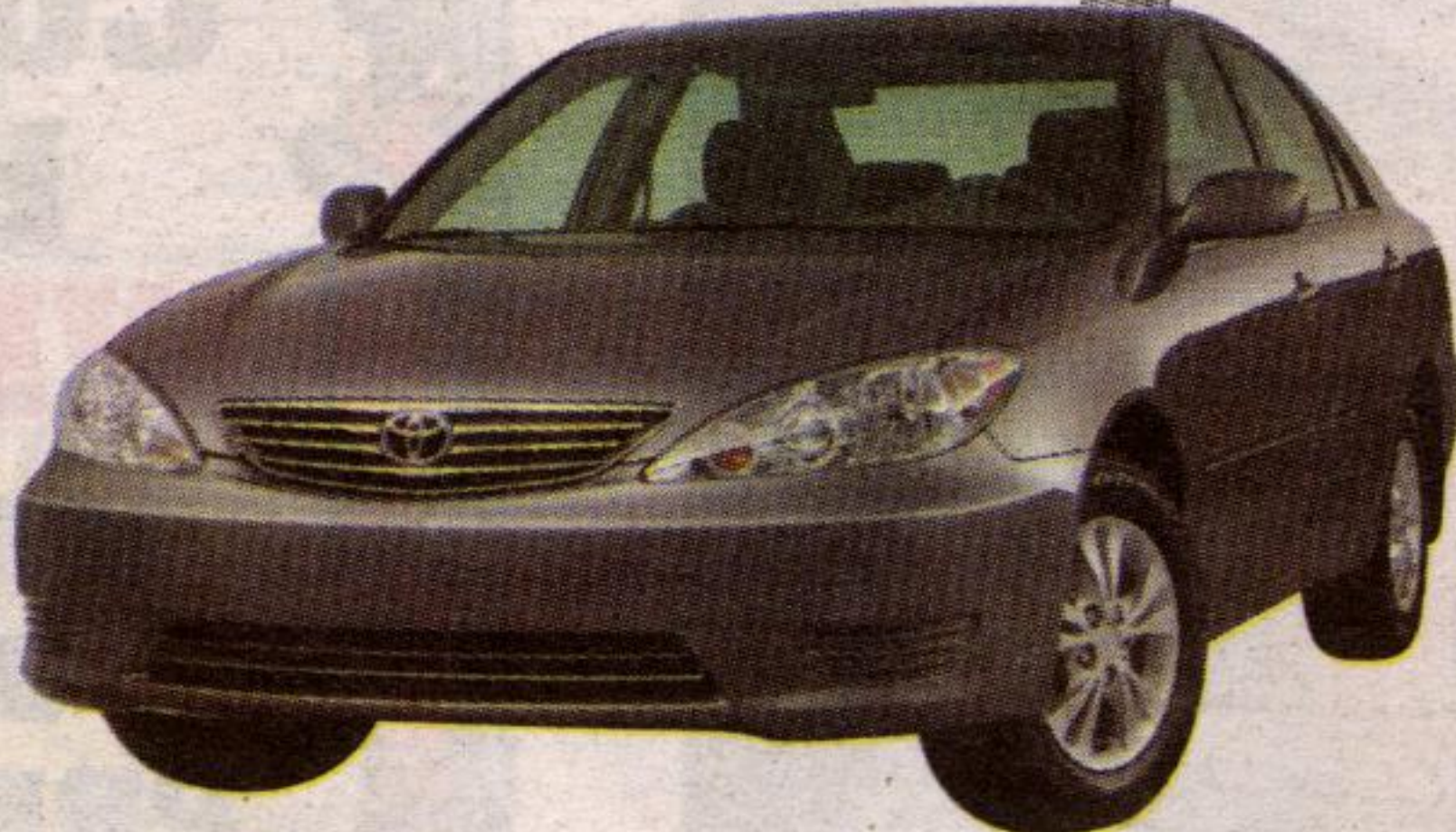
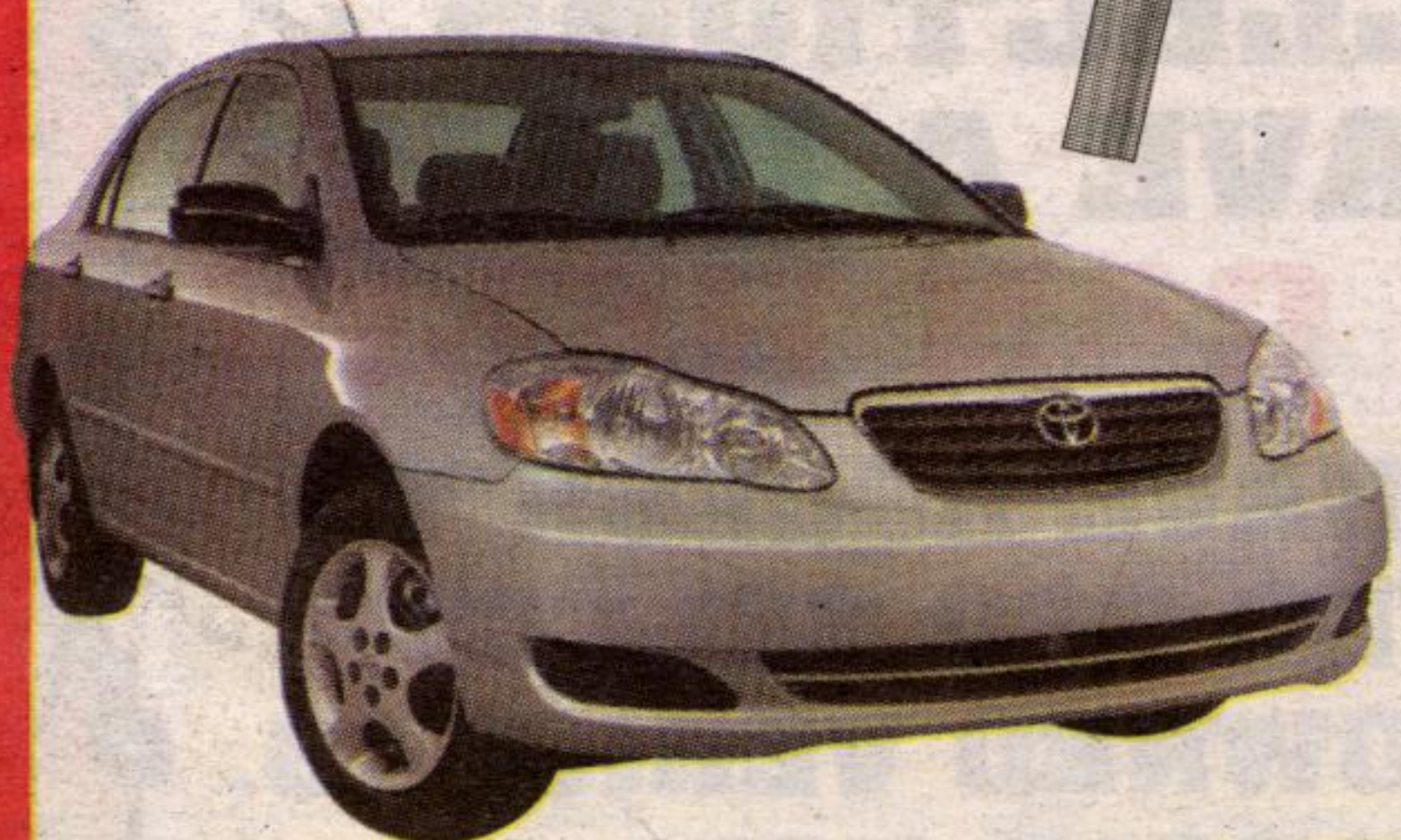
**\$0 Down**  
**LEASE FOR \$177\* PER MONTH FOR 60 MONTHS WITH \$0 DOWN FREIGHT AND P.D.E. INCLUDED**

**Fuel consumption:**  
Hwy 5.2L/100 km (54 mpg)  
City 6.7L/100 km (42 mpg)

- 5-speed manual transmission
- ABS • AM/FM Stereo cassette
- 60/40 split folding rear seat
- Tilt steering • Driver and passenger airbags • Tinted glass

**Plus, receive \$100 tax credit for fuel conservation.**

**TOYOTA**  
**LEASE FOR**  
**\$177\***



**Great offers available on remaining 2004's.**

\* Leasing plans from Toyota Financial Services. O.A.C. Offers valid on 2005 Corolla (Model BR32EMB), Echo Hatchback (Model JT123MA), Echo Sedan (Model BT123MA), Matrix (Model KR32EMB), Camry LE (BE32KAA), and Sienna (ZA30CPA). Freight and P.D.E. not included in MSRP. Based on 60-mos. walkaway lease rate of 3.9% on Echo Hatchback and Echo Sedan. Based on 48-month lease rate of 4.2% on Corolla, 4.4% on Matrix, and 5.9% lease rate on Camry and Sienna. License, registration fees, insurance and taxes extra. Lease includes freight and P.D.E. cost of \$1,010/\$960/\$960/\$1,010/\$1,110/\$1,260. Security deposit of \$250/\$225/\$225/\$275/\$350/\$400 on Corolla/Echo Hatchback/Echo Sedan/Matrix/Camry/Sienna. Down payment of \$2,628/\$0/\$547/\$2,636/\$3,579/\$5,347 or trade equivalent required. First payment and security deposit due at lease inception. Total lease obligation of \$12,467.93/\$10,620.00/\$11,886.72/\$13,628.20/\$17,931.00/\$21,619.00 and purchase option price of \$8,050/\$5,198/\$5,068.80/\$9,422.88/\$12,225.99/\$14,400 based on a maximum of 96,000 KMS (120,000 KMS for Echo Hatchback and Echo Sedan). Additional KM charge of \$.07/.07/.07/.07/.10/.10 if applicable. MSRP of \$17,500/\$12,995/\$14,080/\$19,630/\$24,950/\$30,000. All rights are reserved. These are limited time offers. Please see your participating Toyota Dealer for complete details. Dealer may sell/lease for less.



**GEORGETOWN TOYOTA SALES**

15 MOUNTAINVIEW RD. N., - GEORGETOWN (905) 877-2296 Tor. 874-4276

WEBSITE at [www.georgetowntoyota.com](http://www.georgetowntoyota.com) or E-MAIL at [info@georgetowntoyota.com](mailto:info@georgetowntoyota.com)

