

324 Guelph St. Georgetown

ROYAL LePAGE
Meadowtowne Realty
Independently Owned & Operated Broker

(905) 877-8262
OPEN 7 DAYS A WEEK



FOR THOSE WHO VALUE EXCELLENCE!
Fabulous Fernbrook home on quiet street in Stewart's Mill with over 2600 sq. ft. of elegant living space! Vaulted ceilings in great room with gas F/P & hardwood flrs. Large eat-in kitchen with granite countertops, floating island, custom oak cabinets, ceramic backsplash & flrs with walkout to prof. landscaped pool-sized backyard. 4 bdrms, 3 washrooms & unspoiled basement waiting for your finishing touches. Close to school, parks, golf and nature trails. Ideal location for the professional! More than a home; a lifestyle!
Amazing value for \$445,900! Call Janice Rumley today, 905-877-8262.



COUNTRY 3 BEDROOM BUNGALOW
Large 3 bdrm brick bungalow in a country setting on over 2.5 acres! Set well back from the road this home offers recently renovated kitchen with lots of built-ins, main floor family room with French doors to deck, all bathrooms recently renovated and all windows replaced. Lots of features!

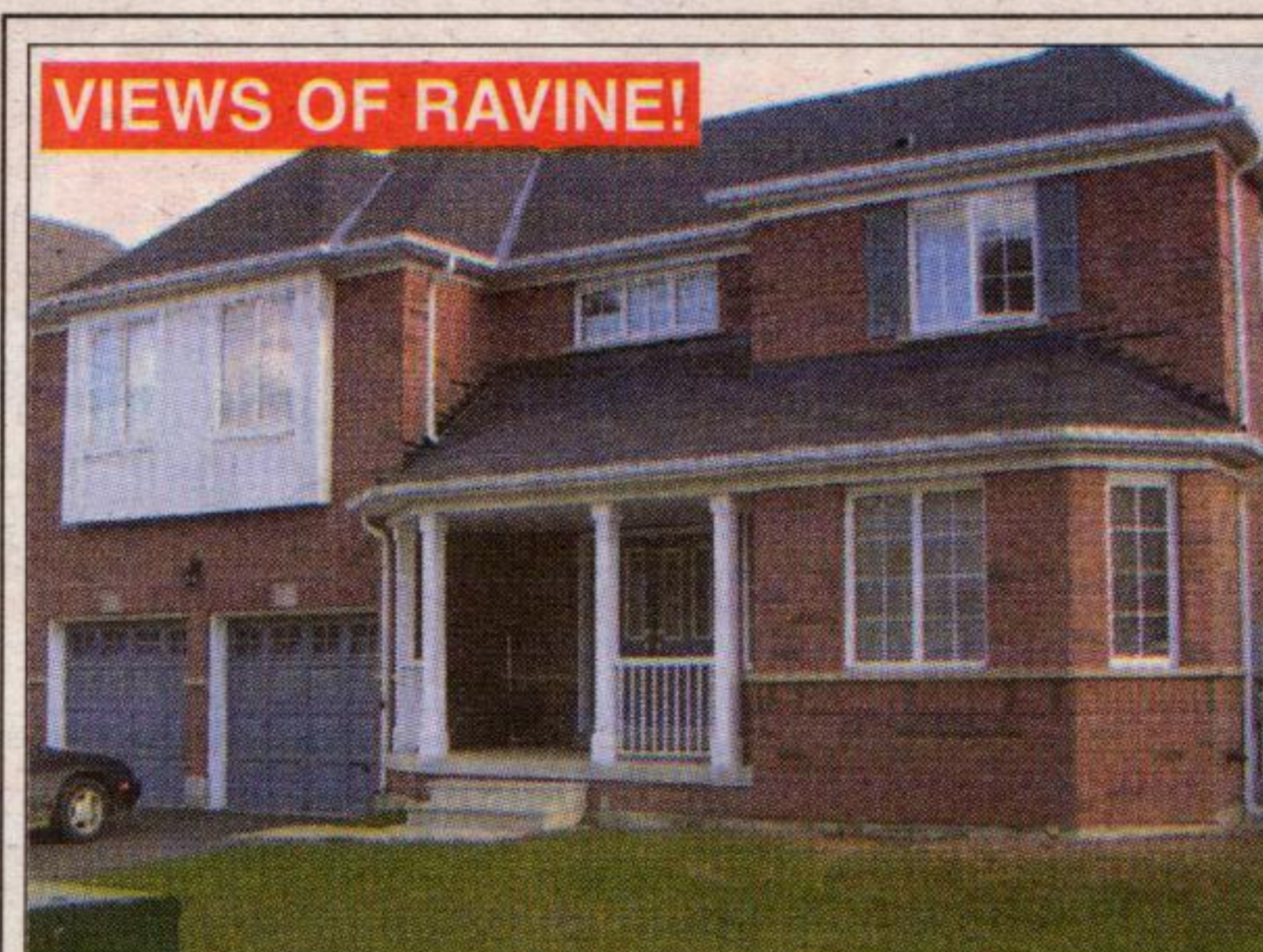
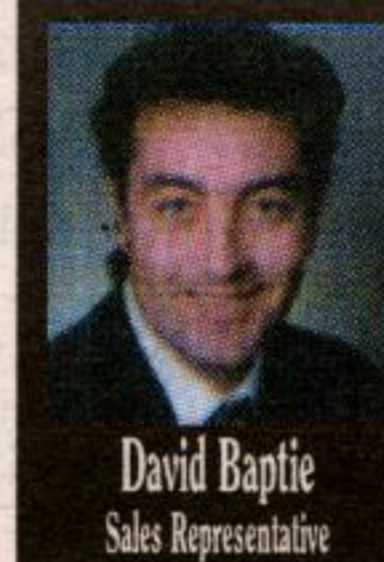
For your private viewing call Christina Matesic 905-877-8262, cell 905-875-8262 or visit my website at www.royallepage.ca/ChristinaMatesic.



CHARLESTON ESTATE SUBDIVISION
"Charleston" custom design/built raised 3 bedroom bungalow on a private 2 acre mature/forested lot in estate subdivision. This 4 year new home offers a large kitchen w/centre island, granite counters and desk unit, double sided fireplace, all appliances built in. Cathedral ceiling in family room with long beautiful country views. This home is on a forested lot on top of a hill, very private. Enjoy your 800 sq. ft. deck complete with hot tub. Walk out from master and kitchen to deck.



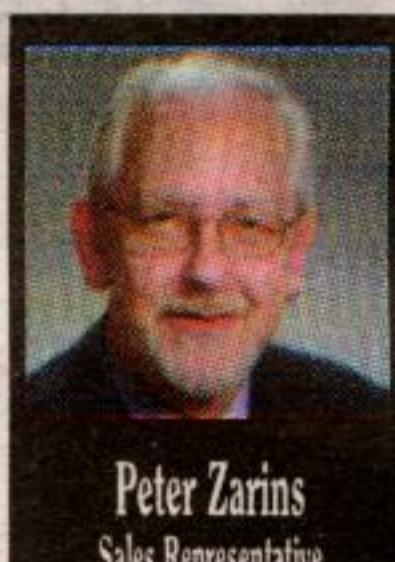
GREAT FAMILY HOME!
3+ B/R Raised Bungalow. Neutral Colors. Eat-in Kitchen with pantry and b/i d/w. Gleaming strip hdwood flrs! 3 b/r and 1-4 pc bath on main level. Fin. Bsmt. w large rec room and addn'l rooms for bedrooms and/or office space. 3 piece bath. Upgrades: f.a.g., c.a.c., bsmt wdws. Sgls car garage. Lg deck. Fenced yard. Won't last! Contact: **David Baptie to view today; 905-877-8262 or 1-866-865-8262.**



ON PRESTIGIOUS GRIST MILL DR.
Huge 3100++ sq. ft. of open concept living! 4 bdrm, 3 bthrm, premium sized lot! 3 car garage (2 spaces tandem) with separate 60 amp panel! Ideal for workshop or home business! Listed at \$449,500.
For more information visit www.royallepage.ca/1233171 or call Ilena Palmieri-Kosiak at 905-877-8262 or 1-866-865-8262



DORSET PARK, MILTON
Stunning 4+1 bdrm has been lovingly cared for & totally renovated . . . \$30K+ spent on new kitchen, carpet, windows, int & ext doors, garage door, furnace, central air and more! Huge private backyard with 3 year new hot tub and deck, plenty of room for a pool! All appliances included! Priced to sell at \$304,900. **Call Peter Zarins at 905-877-8262 or toll free at 1-866-865-8262.**



RAVINE LOT - \$434,900.
Gorgeous 4 bdr home, over 3,000 sq. ft. backing onto the ravine!! Boasts 9 ft. ceilings, gourmet kitchen w/upgraded severy, lg. pantry, centre island w/o to interlocking patio, open to family room w/gas fireplace! A maintenance free home w/enlarged vinyl casement windows! Main flr laundry w/entrance to garage! Two entrances to basement, main fl den and 2nd fl computer loft. Master has a 5 pc ensuite, roman tub w/separate shower, walk in closet, and separate sitting area! Too many upgrades to list!! Hurry! **Call Shelley Mosur 905-877-8262.**



LOW COST LIVING . . . IT'S POSSIBLE!
Ideal Starter Home on quiet dead end street, just steps from GO Train, Shops, Park & Pool! Bright & airy open concept w hardwood floors in Living Rm & Dining Rm. Upgraded eat-in kitchen w ceramic flooring and built-in dishwasher. 3 brms & 2 washrooms. Upgraded wiring, most windows replaced! Amazing potential! **Call JANICE RUMLEY today 905-877-8262.**



GREAT HOME FOR GARDENERS, ENTERTAINERS, ROMANTICS & HISTORIANS!
Enjoy your morning coffee in the bright & cheery sunroom; or on the private courtyard under the shade of a towering maple. It's easy to entertain family & friends in the large LR/DR w/10' sloping ceilings, lots of windows, hrdwd flrs & 13" baseboard! The large lot (59 x 132') is a gardeners delight w/English gardens, arbour, loads of perennials & mature trees. After a long day, retire to the peaceful side yard next to a relaxing goldfish pond; or just curl up with a good novel next to one of two gas fireplaces. Walk to Main street shops, the GO, schools, parks, hospital and more! **Call Susan Lougheed Sales Rep. 905-877-8262.**

