




## Strrrrrrike...you're wet!

At the recent fun day fund-raising event organized by Neilson's joint health and safety committee, employees enjoyed a number of activities, including a dunk tank. Maintenance supervisor Jan Miller (left) took his turn in the tank while employee Anita Vandermeer (below) scored a direct hit to put him in the drink. All proceeds raised went to the War Amps of Canada.

Photos by Ted Brown

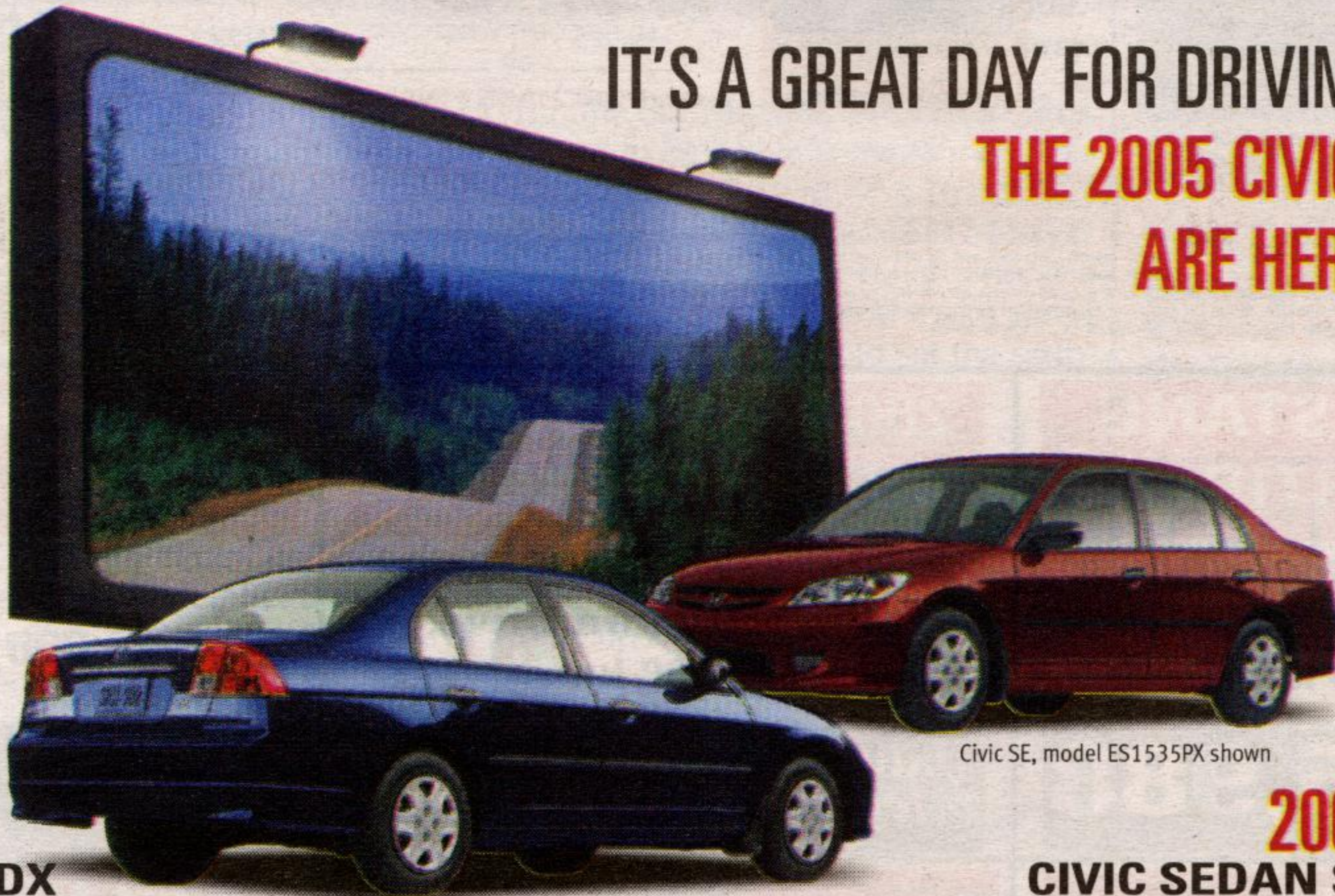


As if dying in your 30's isn't hard enough to swallow...  
 What if you needed a fistful of pills just to digest your food?  
 Now that you know more about **cystic fibrosis**, won't you please help?

 Canadian Cystic Fibrosis Foundation  
 1-800-378-CCFF  
 www.cysticfibrosis.ca



IT'S A GREAT DAY FOR DRIVING.  
**THE 2005 CIVICS ARE HERE.**



### 2005 CIVIC SEDAN DX

Genuine Honda performance and quality from bumper to bumper.

Here's classic Honda value featuring advanced engineering, unbeatable reliability, top-ranked fuel efficiency and strong resale value.

- 2005 Civic Sedan DX is well-equipped with:
- ▶ 1.7L SOHC 16-VALVE ENGINE
  - ▶ 5-SPEED MANUAL TRANSMISSION ▶ 4-WHEEL INDEPENDENT SUSPENSION
  - ▶ TACHOMETER ▶ THEFT DETERRENT ECU IMMOBILIZER ▶ DUAL STAGE, DUAL THRESHOLD AIRBAGS (SRS) ▶ POWER STEERING & BRAKES ▶ EXCLUSIVE CIVIC FLAT REAR FLOOR...AND MUCH MORE

Lease a 2005 Civic DX for 60 Months

**\$218** PER MONTH D.A.C. WITH **\$0** DOWN PAYMENT\* and SECURITY DEPOSIT



### OR PURCHASE

2005 Civic DX from **\$16,200** WITH 2005 Civic SE from **\$17,300**

**3.9%** PURCHASE FINANCING D.A.C. FOR UP TO 36 MONTHS

Lease a 2005 Civic SE for 60 Months

**\$228** PER MONTH D.A.C. WITH **\$0** SECURITY DEPOSIT \$273.59 DOWN PAYMENT

Now every 2005 Honda comes with **HONDA PLUS** 3-year roadside assistance<sup>A</sup>

Civic SE, model ES1535PX shown

Civic DX, model ES1515PX shown

### 2005 CIVIC SEDAN SE

Last year's runaway success, now further value enriched!

Honda's value smash hit returns with even more to entice you. The stylish SE is an unmistakable step up in sophistication.

- Civic Sedan SE enhances the superb value of the DX by adding these desirable features:
- ▶ NEW FOR 2005 KEYLESS REMOTE ENTRY
  - ▶ NEW FOR 2005 CENTRE CONSOLE WITH STORAGE AND ARMREST
  - ▶ CD PLAYER ▶ AUDIO ANTI-THEFT SYSTEM ▶ CFC-FREE AIR CONDITIONING
  - ▶ MICRON AIR FILTRATION ▶ POWER DOOR LOCKS...AND MORE

**HONDA TAKES SAFETY AND THE ENVIRONMENT SERIOUSLY.** Honda is an acknowledged industry leader in building advanced safety technology into all of its vehicles. Every 2005 Civic Sedan and Coupe offers:

- ▶ Driver and Front Passenger Dual-Stage, Dual-Threshold Airbags (SRS)
- ▶ Front and Rear Crumple Zones
- ▶ 3-Point Seatbelts in All Seating Positions
- ▶ LATCH Child Safety Seat Anchors in Rear Outboard Positions
- ▶ Plus, Class-leading Fuel Efficiency

**50** MPG 5.7 L/100 Km Highway

Ontario Honda Dealers THE **SMARTER** WAY TO BUY.

VISIT AND LOCATE YOUR NEAREST DEALER AT: [www.hondaontario.com](http://www.hondaontario.com)



Lease and finance offers are from Honda Canada Finance Inc., on approved credit. †Based on a 2005 Civic Sedan DX, model ES1515PX (††2005 Civic Sedan SE, model ES1535PX). Factory order may be required. Lease for 60 months at \$218 (††\$228) per month plus applicable taxes with 120,000 km allowance (12¢/km exceeding allowance). \$0 down on approved credit from Honda Canada Finance Inc. Initiation payment of \$302.71 (††\$628.83) includes down payment, first monthly payment, registration, security deposit of \$0 (††\$0), freight and P.D.E. and taxes. Total freight and P.D.E. is \$1,095.00 (††\$1,095.00). Total lease payment is \$15,094.00 (††\$16,098.23). Option to purchase at lease end for \$6,966.00 (††\$7,612.00) and taxes. Civic leases calculated with finance rate of 4.9%. Rate may change effective November 1, 2004 and will affect down payment, security deposit, residual value and initiation figures. Dealer may lease for less. \*3.9%/4.9%/5.9% purchase financing is available on select 2005 Civic Sedans for up to 36/48/60 months. Finance example: \$20,000 at 3.9%/4.9%/5.9% equals \$589.59/\$459.68/\$385.73 per month based on a 36/48/60 month term. C.O.B. is \$1,225.24/\$2,064.64/\$3,143.80 for a total of \$21,225.24/\$22,064.64/\$23,143.80. Dealer may sell for less. †††Offers valid through October 31st, 2004 at participating dealers only. Does not include Civic Hybrid. See participating dealer for full details. †††Figures estimated. See Dealer for latest 2005 EnerGuide published by NRCan when available. †Recent university or college graduates may be eligible for an allowance of up to \$750.00 on certain models. †††See participating Honda Dealers for complete details. †††Visit [www.nhtsa.gov](http://www.nhtsa.gov) for details.

## Churches & Temples

**Georgetown Alliance Church**  
 "A growing family of people"  
 Sunday Worship @ 9:00am & 11:00am  
 Nursery & Sunday School available at both services  
 290 Main St. (S. of Maple) 873-0249

**St. George's Anglican Church**  
 Sunday Worship 8:00 am, 9:30 am, 11:15 am  
 Church School & Nursery 9:30 am and 11:15 am  
 Thursday Worship 10:00 am  
 60 Guelph Street, Georgetown 905-877-8044  
 Additional parking at Georgetown District High School

**Maple Avenue Baptist Church**  
 9:30 am Family Teaching Ministry  
 Sunday 10:30 am Worship Hr.  
 Weekly events for all ages.  
 "Where Friends become Family"  
 905-873-9211  
 177 Maple Ave., Georgetown  
 email: mabc@mab.ca

**St. Alban's Anglican Church**  
 Sunday Worship 8:00 a.m. Said Eucharist  
 10:30 a.m. Sung Eucharist with Nursery & Children's Worship  
 905-877-8323  
 537 Main St., Glen Williams  
 Pastor: The Rev. Graham Stapp  
[www.saintalban.ca](http://www.saintalban.ca)

A Time for Fellowship & Friendship at  
**KNOX PRESBYTERIAN CHURCH**  
 Worship & Sunday School at 11 am  
 Service Dial-In: 905 702-1629  
 Rev. Dr. Kobie Du Plessis  
 905 877-7585 116 Main St. South  
[www.aztec-net.com/~KPC](http://www.aztec-net.com/~KPC)

**GEORGETOWN CHRISTIAN REFORMED CHURCH**  
 welcomes you!  
 Pastor Rev. Mark Verbruggen Associate Pastor: Rev. Ted. S. Bootsma  
 Sunday Worship Services: 10:00 am & 6:00 pm  
 11611 Trafalgar Road (north of Maple Avenue) 905-877-4322  
[www.gcrc.on.ca](http://www.gcrc.on.ca)

**NORVAL Presbyterian Church**  
 Rev. Bruce Clendening  
 905-877-8867  
 SERVICE & SUNDAY SCHOOL 11:15 A.M.  
 "All are welcome"  
 499 Guelph St., Norval, Ont.

**MOUNT ZION FULL GOSPEL MINISTRIES**  
 (Affiliated with Gospel Crusade of Canada Ministries)  
 A Life changing ministry  
 "But seek ye first the kingdom of God, and his righteousness; and all these things shall be added unto you."  
**BALLINAFAD COMMUNITY CENTRE** downstairs  
 ALL WELCOME Sunday Worship 11a.m.  
 PASTOR ANDREW G. PATON (COUNSELLING AVAILABLE)  
 (519) 853-5657

**What Do I Really Want?**  
 (That Money Can't Buy)  
 Sunday 10 am  
 @ Gellert Community Centre  
 The Gathering Community Church  
 905-873-LIFE(5433) [www.thegathering.ca](http://www.thegathering.ca)

**Georgetown Christian Fellowship**  
 Sunday Services 10:00 a.m. & 6:00 p.m.  
[www.georgetownchristianfellowship.com](http://www.georgetownchristianfellowship.com)  
 Pastor David Tapley  
 13619 Highway 7 West  
 Georgetown, ON  
 905-873-9652  
 We're a friendly church with contemporary music & practical life-changing teaching from the Bible.

**ALPHA COURSE WEDNESDAYS 6:30 P.M.**

The Salvation Army  
**Georgetown Community Church**  
 Casual Dress, Exciting Music & Relevant Sermons  
 Service, Nursery & SONday's COOL @ 10:30 am  
 905 877-1374 2711 Mountainview Rd. S.  
 E-mail: [mountainviewchurch@cojeco.ca](mailto:mountainviewchurch@cojeco.ca)  
 ~ Free Family Food & Fun Day, Sat. Oct. 2nd 11-4pm