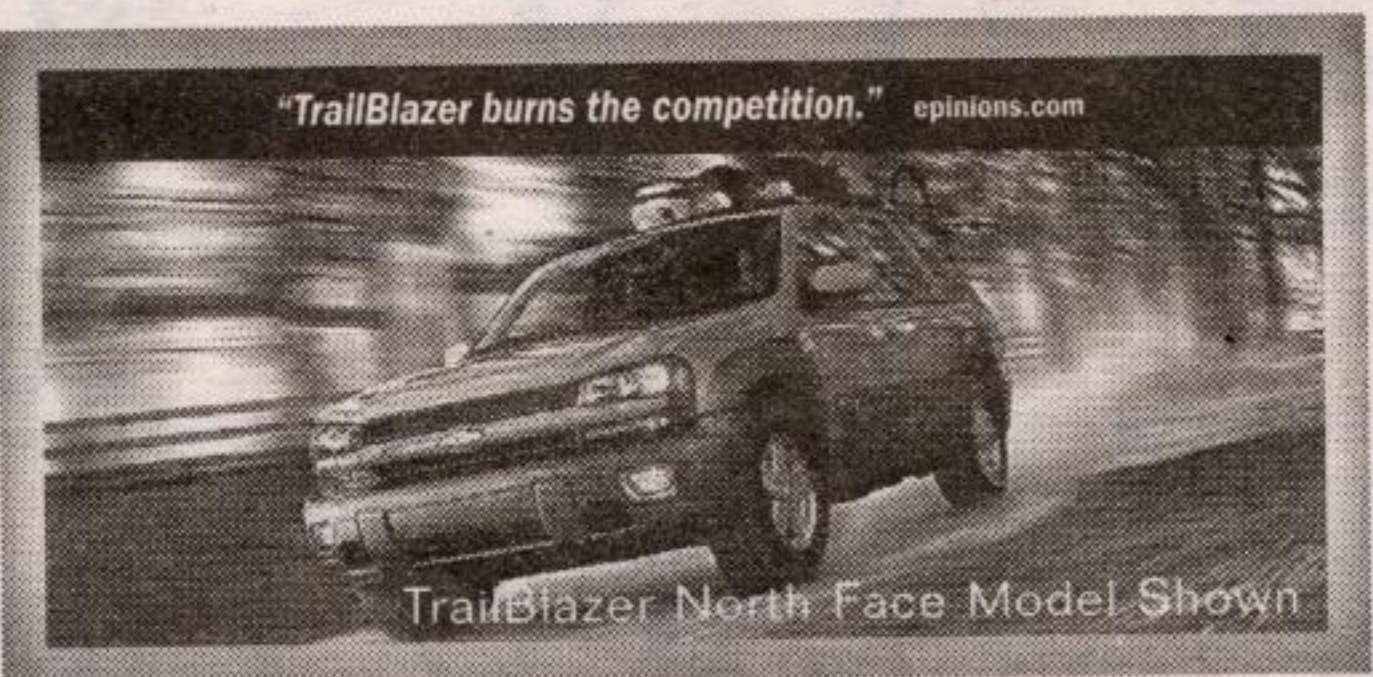


# ROCK THE NATION | EVENT



## THE ONLY THING IT DOESN'T HAUL IS A BIG PRICE TAG.

<b>2004 CHEVY SILVERADO EXT CAB 2WD</b>		
<b>SILVERADO R7H • 285 HP Vortec 4800 V8 Engine • 4-Speed Automatic with Overdrive • Dual Zone Air Conditioning • Locking Differential • ABS • 40/20/40 Split Front Bench with Custom Cloth Trim</b>	<b>SMARTLEASE</b> <b>\$253*</b> OR <small>per month</small>	<b>0%†</b> OR <b>\$28,948*</b> <small>purchase financing</small> <small>cash purchase price</small>



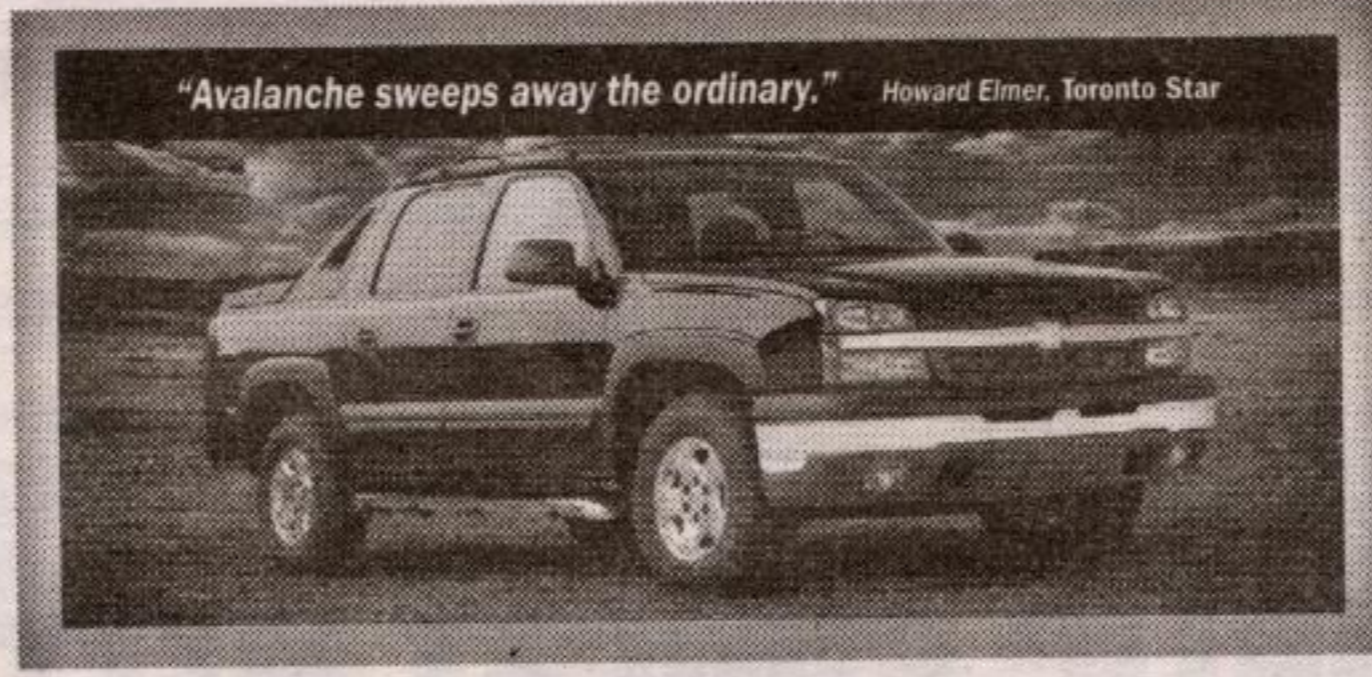
"TrailBlazer burns the competition." epinions.com

TrailBlazer North Face Model Shown

### TRAILBLAZER

- TrailBlazer LS R7A • 275 HP Vortec 4200 Engine
- Autotrac Automatic 4WD • Remote Keyless Entry
- Dual Zone Air Conditioning
- Power Windows/Locks/Heated Mirrors

**SMARTLEASE**  
**\$348\*** OR **0%†** **purchase financing**  
per month

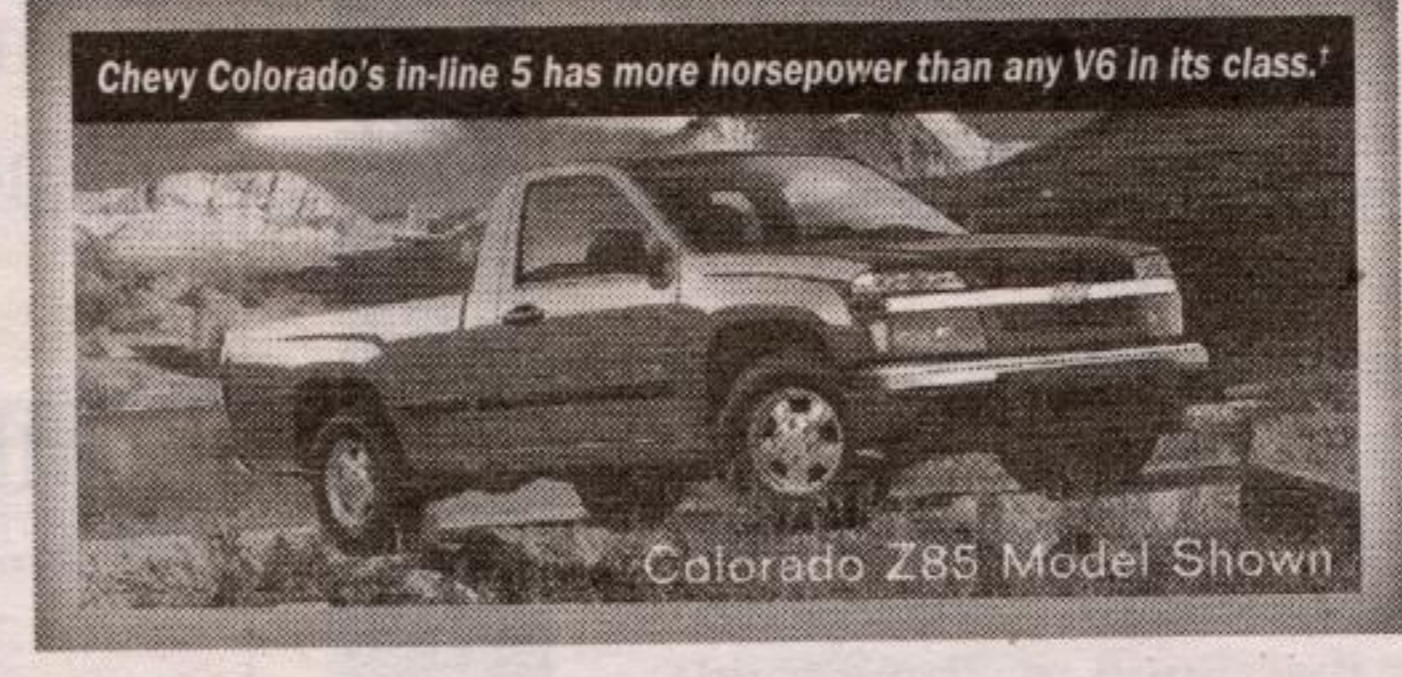


"Avalanche sweeps away the ordinary." Howard Elmer, Toronto Star

### AVALANCHE

- Avalanche R7B • 295 HP Vortec 5300 V8 Engine • 4-Speed Automatic with Overdrive and Tow/Haul Mode • Industry-Exclusive Convert-A-Cab System • Folding Midgate • 3-Piece Removable Rigid Cargo Cover • Removable Rear Window • 2WD

**SMARTLEASE**  
**\$325\*** OR **0%†** **purchase financing**  
per month



Chevy Colorado's In-line 5 has more horsepower than any V6 in its class.\*

Colorado Z85 Model Shown

### COLORADO

- 175 HP Vortec 2800 DOHC Engine • ABS • 5 Speed Manual • 2 Position Locking Tailgate • 15" Wheels • 2WD

**STARTING AT**  
**\$18,345\***  
MSRP



**For the latest information, visit us at gmcanada.com, drop by your local Chevrolet Dealer or call us at 1-800-GM-DRIVE.** \*Based on a 36/48/36 month lease. A down payment or trade of \$3,970/\$3,955/\$3,970 (Silverado 2WD Ext Cab R7H/Trailblazer LS 4WD R7A/Avalanche 2WD R7B) is required. Annual cost of borrowing of 0.5%/0.9%/1.4% per annum. Option to purchase at lease end is \$18,190/\$18,522/\$24,261 plus applicable taxes. Annual kilometre limit of 20,000 km, \$0.12 per excess kilometre. Other lease options available. †Based on MSRP of 2004 Base Chevrolet Colorado Regular Cab. (Freight, taxes, PPSA and administration charges not included). \*\*Freight (\$1,050/\$950/\$1,050/\$900), licence, insurance, registration, PPSA, administration fees and taxes not included. ‡The SMARTLEASE monthly payment and the GMAC purchase finance rate are not available with and are not calculated on the "Cash Purchase Price" shown. The difference between the price for the SMARTLEASE/GMAC Purchase Financing offer and the "Cash Purchase" offer is deemed under provincial disclosure laws to be a cost of borrowing, whether or not the same represents actual interest, and is required to be expressed as an annual percentage which is 4.12% (Silverado 2WD Ext Cab R7H). †Financing on approved GMAC credit only. Down payment, trade and/or security deposit may be required. Monthly payment and cost of borrowing will vary depending on amount borrowed and down payment/trade. Example: \$10,000 at 0% APR, the monthly payment is \$208.33 for 48 months. Discounts or other incentives may be available where consumers opt for a cash purchase price offer. By selecting the purchase financing offer, consumers may be foregoing such discounts and incentives which may result in a higher effective interest rate. ††Offers apply to 2004 new or demonstrator models of vehicles equipped as described. Offers apply to qualified retail customers in the Ontario Chevrolet • Oldsmobile Dealer Marketing Association area only (including Outaouais and excluding Northwestern Ontario). Dealer trade may be required. Dealers are free to set individual prices. Limited time offer which may not be combined with other offers. Certain exceptions apply. See your dealer for conditions and details. ©Registered trademark of General Motors Corporation. TD Canada Trust licensed user of mark. Visa International Service Association/TD Canada Trust and GM licensed user of marks. ®Trade-mark of The Toronto-Dominion Bank.