



HALL OF FAME

Town & Country Sales Representative

Maureen Plucinsky B.Sc.

RE/MAX

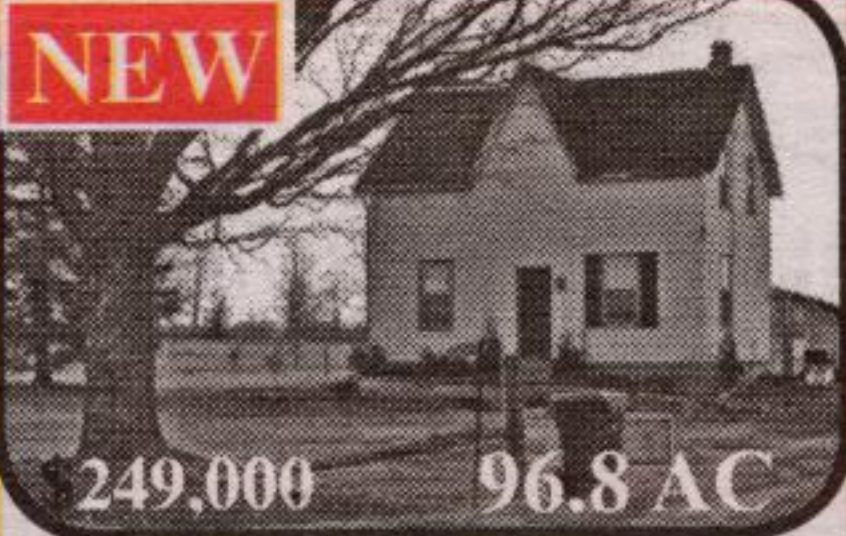
Blue Springs Realty (Halton) Corp.

(905) 877-5211
1-800-834-5516

Directions & Photos

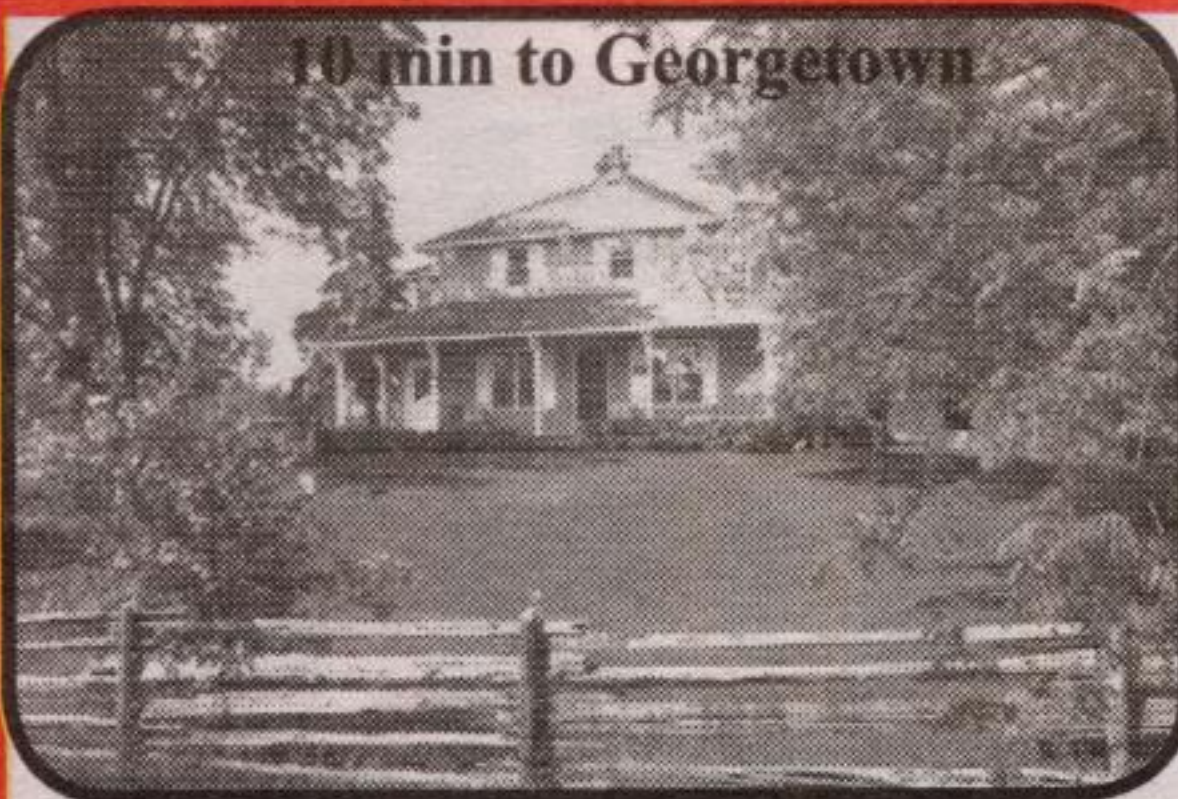
<http://maureen.ca>

NEW



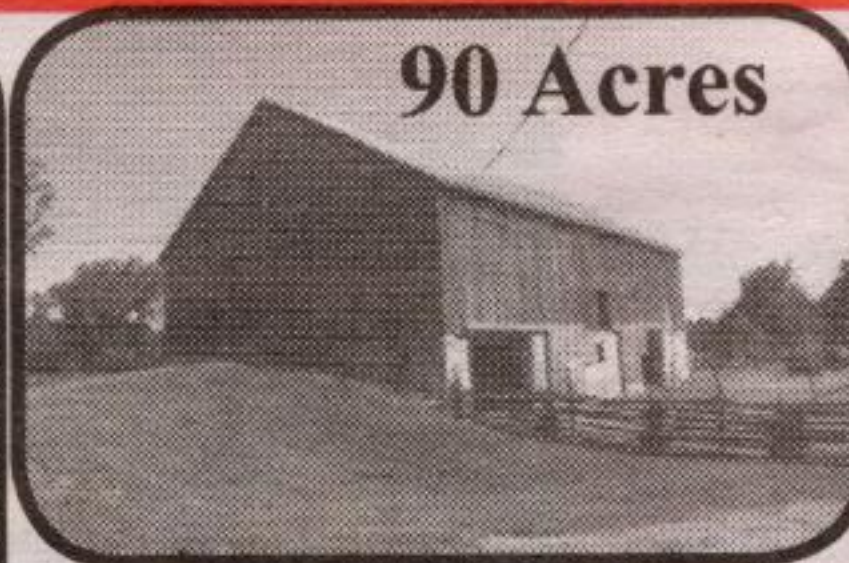
249,000 96.8 AC

SOUTHGATE: ON 2 PAVED ROADS. 15 min NW of Shelburne. ~70 ac hay, 25 bush. Being renovated. W of Shelburne on Hwy 89, N on Grey Road 8 to 106599 Southgate Road 10, NW corner. (Proton)



10 min to Georgetown

Erin: 90 ac farm (barn, pool, garage)



90 Acres

Picture perfect, REPRODUCTION!!! 4 bdrm, 3WR, "Early Canadiana" home o/l twin ponds, set far back from a quiet road on 90 rolling acres. ~25 ac of mixed bush with stand of

hardwood trees & ever flowing stream at the rear. Trails to a high ridge with panoramic views. Pine plank floors. New greenhouse kitchen o/l pool. Excellent well. Inground pool & cabana. Bank barn in excellent condition (recent floor & electrical) presently used for sheep. New 4 car garage. Near Ballinafad, less than 12 min to Georgetown GO

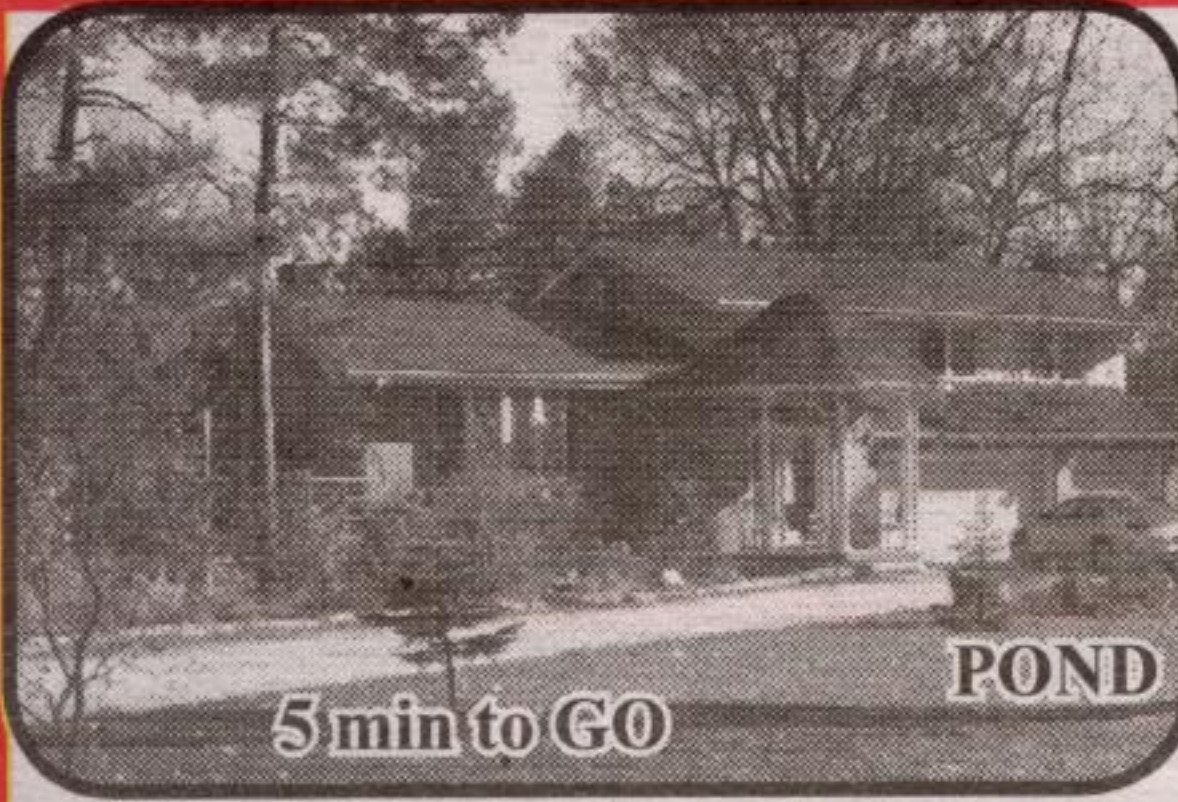


Inglewood, Caledon: 5bdrm, 1.5 acre

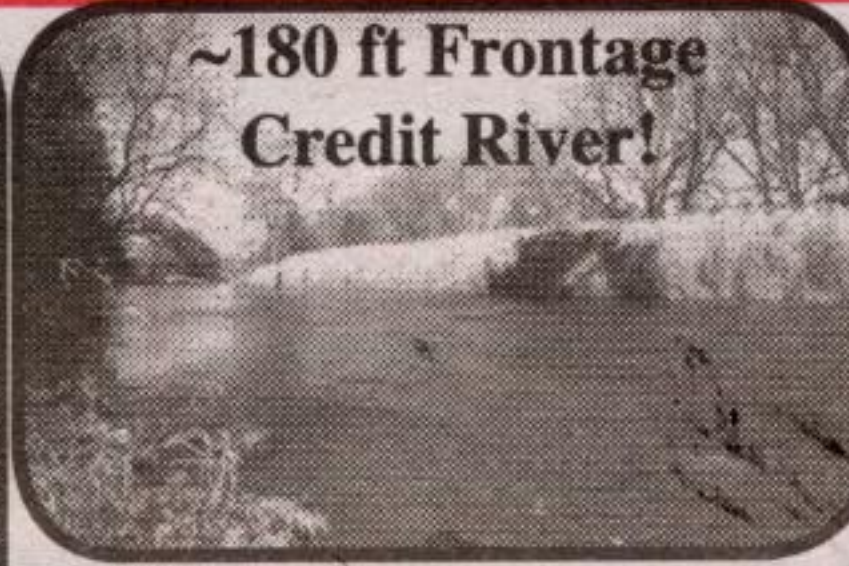


Exquisite Alba Stone brick, 5 bdrm, 4+washrm, 4 car gar on 1.5 acre with municipal water & nat gas! Granite, hrdwd & ceramic floors. Grand foyer with granite floor & finely crafted solid

oak staircase w open risers & twin balconies spanning 3 floors. Open concept LR, raised piano conservatory & DR. Kitchen with large breakfast area o/l solarium & Family rm with coffered ceiling, wall of windows & gas FP. Huge MBR w opulent ensuite & w/o. Low "E" vinyl windows. 1000+ft TREX deck with spa. Gorgeous landscaping. Fab views. 20 min to airport.



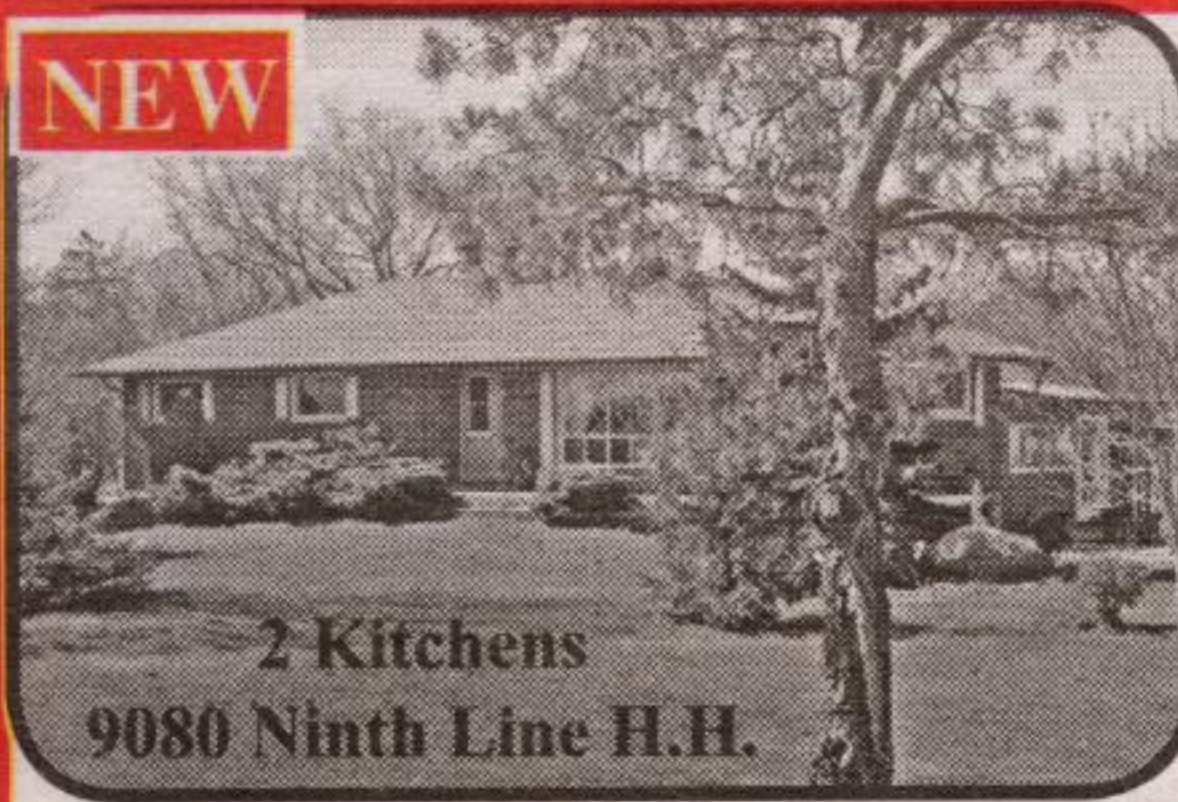
Glen Williams: 9 Confederation St.



~180 ft Frontage Credit River!

Spectacular 3bdrm, 3 washroom, 3 car garage on gorgeous 5.45 ac parcel with ~180ft frontage on the Credit River! Inviting foyer. Den. LR (natural gas FP) o/l stocked pond with island!

The DR o/looks the Credit River! New kit with oak cabinets, breakfast bar & greenhouse eating area o/l the Credit! Large MBR with whirltub & w/o to private deck o/l the Credit River! Large family rm with FP, picture windows & w/o to yard & river! Unique & rare property. Perfect for lovers of natural areas & wild life. Mun water & cable available.



Halton Hills: 4 bdrm, 2 car gar, 5+ Ac.

Landscaped 5 ac w pond! S of Georgetown! 5 min to Hwys 401, 407 & Miss. 4 bdrm, 2WR, all brick. Lovingly maintained & improved. All vinyl clad windows. Oak hrdwd fls. Beautifully fin lower level w huge fam rm w brick FP w insert, sitting rm & 2nd kit. L shaped sun rm. Double det garage, carport, driveshed, rabbit barn & inground pool.



Georgetown: 3 bdrm, 2WR, on large pie shaped lot o/l treed park. Hardwd floors. Many new vinyl windows. Fam rm with pine wainscotting, gas FP, b/i cabinets. CAC & CVAC. Fenced yd. Cedar deck.



East Garafraxa: 5bdrms, 50 acres

Fabulous rock/brick home on ~ 50 acres o/l pond & hills to W. Large foyer; high ceilings; huge Fam rm with FP & w/o to deck; LR(den) with FP & w/o; 5 bdrms (2 with ensuite); 5 WR (2 with whirl tubs); library & 2 fin rec rms. 3 car gar & 2 bdrms built with insulated concrete forms & radiant heat. Black Walnut trees on 30 ac. Swim-in pond.

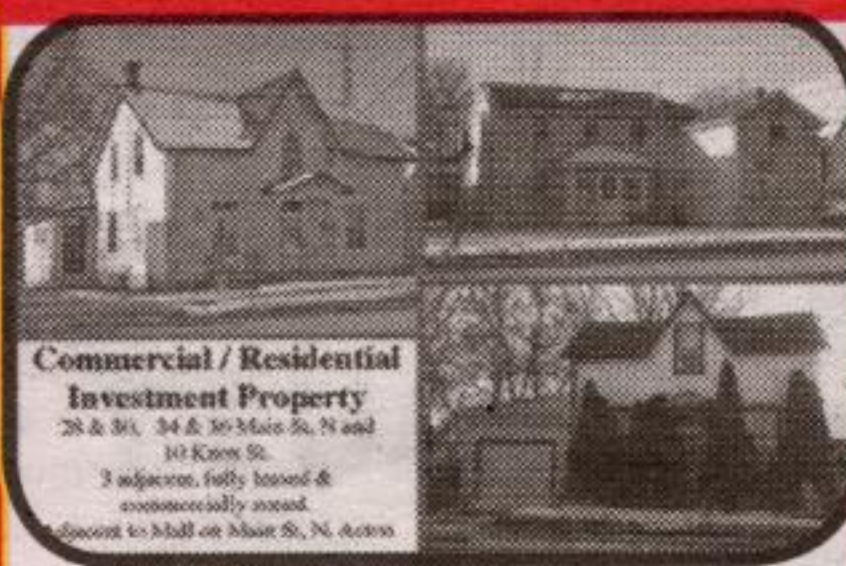


Brampton: Quiet ct. X-large fenced yd. Open concept kit, DR & LR. Parquet floors. Sep entrance to unregistered (not retrofit) 3 bdrm apt. 2x4pc. Vinyl windows. Garage. No land lease. \$244,900



Caledon: 19726 Mountainview Rd.

One of Caledon's finest race horse facilities with ~49 stalls, 4 large barns & an office/lab/breeding barn. 3 tracks(5/8 mi oval thoroughbred track inside standard bred track & 900 m straight track), 6 horse computerized walker/runner, oak & electrical fenced paddocks, 2 wells, 3bdrm home & 2 staff trailers. Fairly flat land. W of Airport Rd, S of 9.

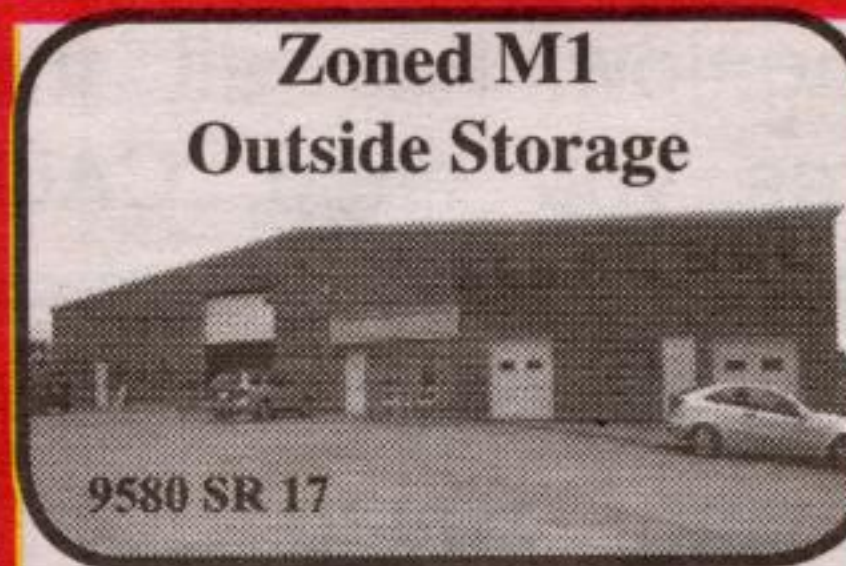


Acton: Com/res investment: 3 adjacent, fully leased, com zoned (C1 & C1(H)) (1 duplex, 2 semis & 1 detached) in Acton core at the corner of Hwy 25 & Knox St. 1/2 ac next to mall. \$624,900.



Halton Hills: 7899 15 Side Rd

Gorgeous treed 26.75acres with 16 Mile Creek. ~5 min N of 401 off Hwy 25 at Speyside. Brick gated entrance. Lit driveway. Underground hydro. Concrete verandah. 4 bdrms, 3+WR, main lev Fam rm. Home renovated 4 yrs ago. Hi-eff FAP furnace. Shop/garage: ~18.6ft x 32.35ft w insul double gar door. Excel well. ~1 ac fenced. ~8 min to Milton GO.



Erin: 2 Hi-Teck indus facilities, 14,400 sq ft (~800 sq ft office), 1.37 ac. Crane rails for 3 ton. Infrared nat gas radiant heat. 16' clear. 7 drive-in doors. 3 WRs. 600 volts, 200 amps, 3 phase. Security.



(905) 877-5165 (905) 874-3040



Johnson Associates

HALTON LTD., REALTOR

Check out my website: www.haltonhills.com/annalostritto

email: alostritto@trebnet.com

ANNA LOSTRITTO* Sales Rep.



NEW

FIVE BEDROOMS!!!

Plus garage with entrance to house, double driveway, and huge mature lot in great neighborhood and court location! Beautifully maintained detached! Upgrades include roof shingles, insulated garage door, energy audit, furnace and more! Updated kitchen with lots of cupboards, and pantry, and door to backyard. Separate living room and dining room, plus den/office on main level! Lots of gleaming wood floors. Wow! 5 spacious bedrooms on 2nd level, master with semi ensuite! Separate entrance to finished rec room in basement with beautiful corner fireplace! Call me TODAY for more details, Anna Lostritto*.

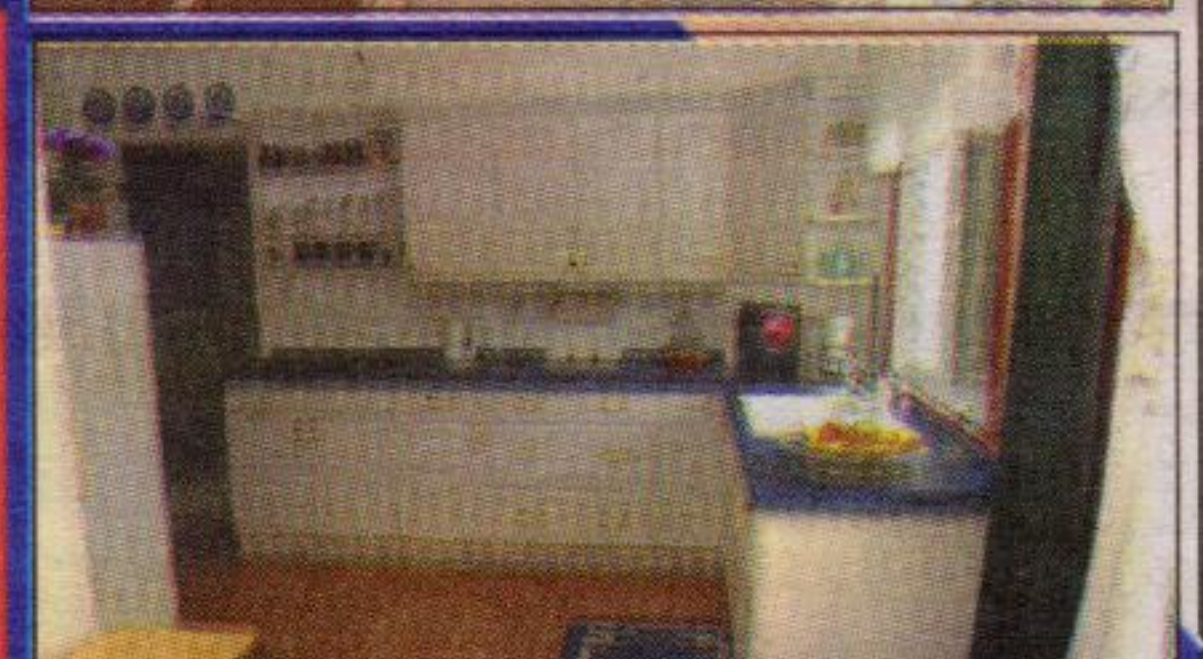
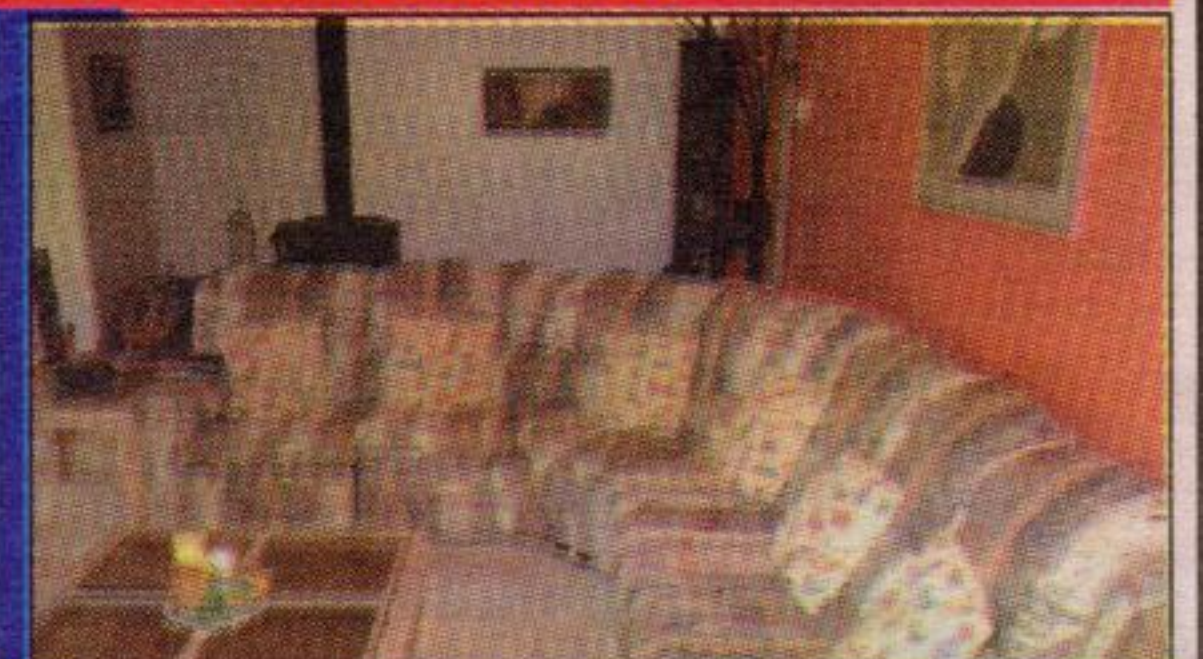
04-341-30

OPEN HOUSE - SUNDAY, 2-4 P.M.
14717 WINSTON CHURCHILL



FABULOUS BUNGALOW IN TERRA COTTA!!
DOUBLE GARAGE!

Nature all around you, stream off front of property, treed, private, 2 acres, walking distance to Conservation area, country shops, trails, and much more! Very bright, 4 bedroom, 2 WRS, move in condition with many modern upgrades! Modern kitchen with large bow window, French doors to living room with fireplace and open concept to party size dining room with wood floors, floor to ceiling windows to enjoy all the natural beauty outside and walkout to huge treed lot! Enjoy the outdoor a/g pool, treehouse, dog run and adjoining stream, front MBR with huge bow window and walkout to deck! Bow windows have window seats to enjoy the views. Don't miss out! Call me TODAY for more!! 04-298-60



NEW \$485,000

AMAZING OVERSIZED HOME!
Plus 2 acres, plus double garage with entrance to main level, and sep. entrance to basement level! Party-size kitchen, lots of cupboards, and walkout to backyard, and open concept to sunken family room! Huge DR and LR with Prp. Gas FP, 5 BRs, one on main level! 3 WRs, 2 corner oval tubs, enormous bright basement with large above grade windows! And Much more!! Call me today!

04-312-91



\$168,000

SUPER STARTER HOME!!
PLUS GARAGE!

Beautifully decorated! 3 BR's, 3 WR's. Built-in dishwasher, main floor laundry, DR/LR combination with walkout to patio! Master BR with laminate floor, walk in closet and 4 pce ensuite. 2nd & 3rd BR's with walkout to balcony, overlooking play area! Hurry!! Call me Quick!!!

04-321-30