



Auction funds Mountsberg renovations

Spring is here and the days are getting longer — mark your calendar because Summer Solstice is on its way! The Summer Solstice Auction is set for June 18.

The Conservation Halton Foundation is proud to present the 3rd Annual Summer Solstice charity auction. This year's event, to be held on June 18 in the beautiful Halton Region Museum at Kelso Conservation Area promises to be the best ever — with wine tastings, great food and both live and silent auctions. We look forward to seeing you there!

This year's auction features the ever-popular Wheelbarrow of Wine raffle — filled with wine and wine accessories, and many other great items: an Executive Chef package, sports and movie tickets and more.

Back by popular demand, Birds of Prey will be on-hand with staff from the Mountsberg Wildlife Centre and we'll have wine tastings and great food from Allison's of Milton for you to enjoy.

Order your tickets now and WIN!

Order your tickets before May 20, 2004 and you'll qualify for our Early Bird Draw for a free Conservation Halton Annual Pass and two bottles of wine (a \$120 value!). Tickets for Summer Solstice are \$40 each. Get yours today by calling (905)336-1158, ext. 255. The Early Bird Draw will take place on May 25 and the winner will be notified immediately.

The Conservation Halton Foundation raises funds for important conservation



projects throughout the watershed. This year's charity auction is supporting the expansion of the Visitors Centre at the Mountsberg Conservation Area located near Campbellville.

Conservation Halton's 2004 budget supports environmental protection

Conservation Halton's 2004 budget will help create a healthy watershed for strong livable communities. The budget of \$15.8 million is used by the community based environmental agency to protect natural areas, prevent flooding, improve water quality, conduct watershed stewardship programs and operate conservation areas. The budget was adopted at the agency's inaugural meeting held on February 26.

Conservation Halton's revenue comes from three primary sources; municipal levies, provincial grants, and funds from user fees it generates through programs.

"Of the total revenue, only 21.4% comes from municipal levies," stated CAO Theresa Maguire-Garber. "This represents one of the smallest percentages of levy

compared to other conservation authorities in Ontario." Maguire-Garber also indicated that 76% of the budget is supported by user fees and other revenues, mostly from Conservation Halton parks, and that no tax dollars support this part of the budget.

"The 16.8% budget increase over 2003 will enable Conservation Halton to better

protect the natural environment during unprecedented urban development," said Conservation Halton Chairman Jean Williams. "There is tremendous value in our conservation programs. For each \$1,000 residents pay in realty taxes in Halton Region, less than \$10 goes to Conservation Halton. With the biggest portion of the levy coming from Halton Region this also demonstrates the Region's strong support for environmental protection."

About \$11.7 million of the budget will be spent on operating Conservation Halton's six primary conservation areas as well as

For each \$1,000 residents pay in realty taxes in Halton Region, less than \$10 goes to Conservation Halton.

the Glen Eden Ski and Snowboard Centre. The balance of \$4.1 million will be spent on land and property management, stewardship and forestry services,

watershed studies and environmental planning.

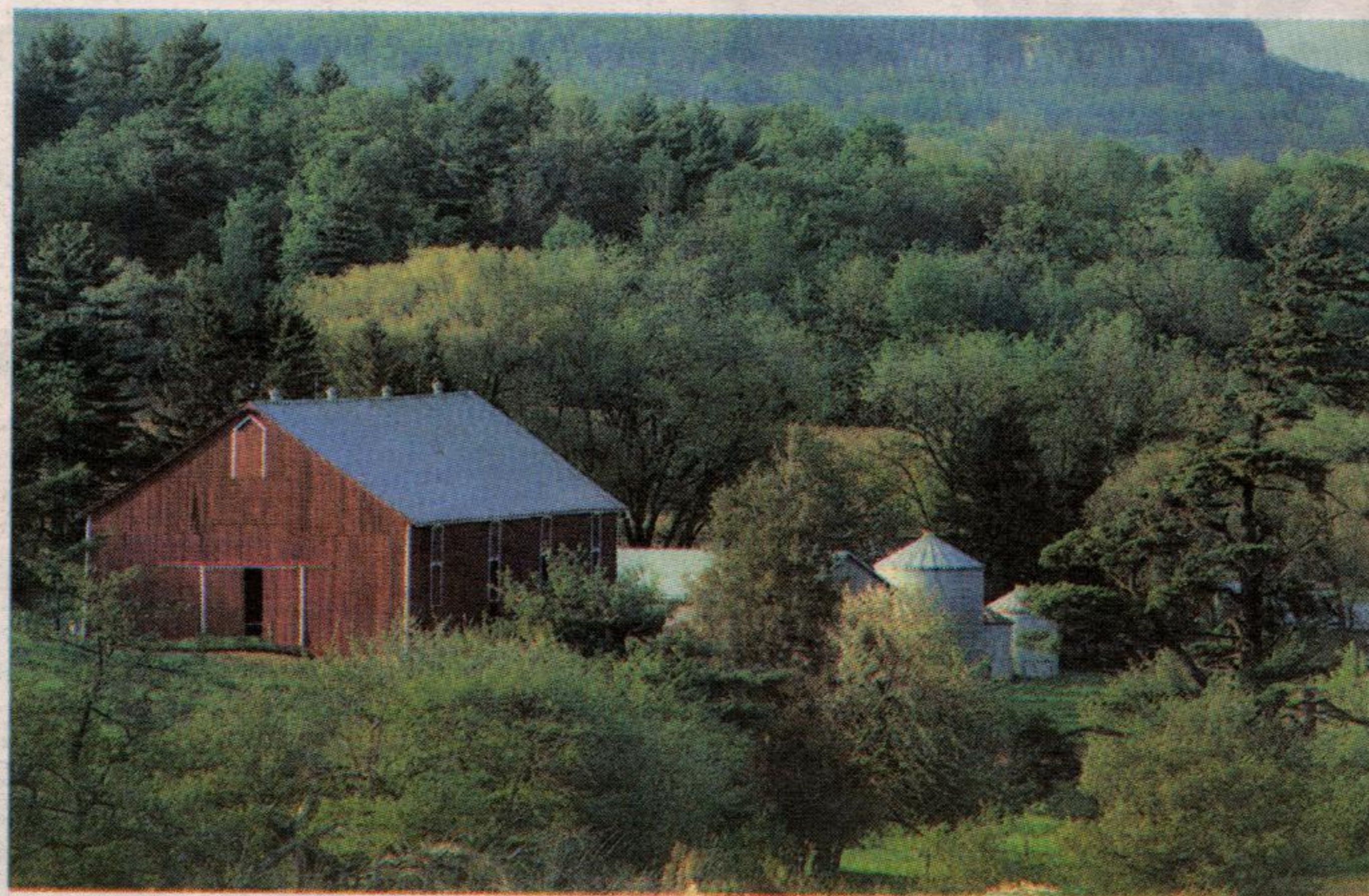
Conservation Halton's budget supports actions detailed in its strategic plan called "Toward a Healthy Watershed." The vision of the plan is to create a healthy watershed with clean streams, vigorous forests, abundant green space and balanced growth.

Farmers eligible for water quality project grants

Halton and Hamilton farmers are eligible to receive a 50% to 75% grant toward the cost of selected water quality projects that reflect best management practices.

Funded through the Agricultural Environmental Stewardship Initiative of Agriculture and Agrifood Canada, the new program will administer \$50,000 in grants through Conservation Halton and Hamilton Conservation Authority.

The funding will help farmers who have completed the Environmental Farm Plan, respond to specific water quality concerns through financial and technical assistance. Farmers can receive up to \$5,000 per project. The deadline for applications is December 31, 2004.



"The health of families and farm animals depends on clean water, as does the health of farm businesses and the rural economy," says Jo-Anne Rzadki, Watershed Stewardship Program Co-ordinator. "Good water quality makes good sense." The benefits of improved water quality include a safe secure water

supply, a healthy aquatic ecosystem, increased recreational opportunities, sustainable agricultural operations and a vibrant economy.

For more information, please contact the Hamilton-Halton Watershed Stewardship Program at (905) 648-4427, ext. 164, 165 or (905) 336-1158, ext. 263.

Halton Region offers free walking kit

To help you get off on the right foot and maintain a walking routine, the Halton Region Health Department has a free walking kit designed to help you build walking into your daily life. 'Walk This Way! - A Guide to Stick to It!' is a free self-help kit for

women and men ages 20-64. The kit includes a booklet with ideas on how to include walking in your day, suggestions for overcoming barriers to getting started, information on stretching, and tips on footwear, clothing and safety. It also contains a reusable laminated board to

plan and record your walks.

Walking is one of Canada's most enjoyed forms of physical activity. Walking briskly for 30 minutes, four to seven days a week not only relieves stress and gives you energy, it can also help reduce the risk of developing heart disease, osteoporosis, and certain cancers. Halton is a great place for walking. From our conservation areas to walking trails in our area municipalities there are

lots of options for families who want to get active. When you order a kit, you will also receive a list of organizations that provide information on tours, trails and walking.

To order your free copy of 'Walk This Way! - A Guide to Stick to It!' please call the Halton Region Health Department at 905-825-6000 ext. 7474. Toll free 1-866-4HALTON (1-866-442-5866). TTY 905-827-9833. Visit our Web site at www.region.halton.on.ca/health.

Watershed Viewpoints

Smart Growth

Conservation Halton supports the principles of sustainability in strategies to manage growth in Ontario. This includes managing growth in ways that sustain a strong economy, build strong communities and promote a healthy environment. Greater protection for the natural environment is also required for this effort.

Mid-Peninsula Highway

Conservation Halton is averse to the proposed mid-peninsula highway through its watershed and believes it will contribute to traffic congestion, air pollution, urban sprawl and the loss of natural features. Alternative options for easing gridlock need to be explored.