



**JA** Johnson Associates  
HALTON LTD., REALTOR

**JODIE MCGUCKEN**  
Sales Rep.  
**905-877-5165**

LOOKING FOR A REAL ESTATE AGENT?

*I have many buyers looking. Call me today for a FREE Market Evaluation.*



**NEW LISTING**

**CHARACTER & CHARM IN GEORGETOWN!**  
**\$344,900**

Fabulous century home on dead end street with gorgeous kitchen addition, skylight, garden doors, large sunfilled principal rooms, main floor family room/den, above ground pool, charming front porch with view of large mature front yard, finished rec room in basement, hardwood floors, 100 amp service, a little bit of yesteryear... Call **Jodie\*** today for more details.



**NEW LISTING**

**2 BEDRM GROUND FLOOR CONDO**  
**\$259,900**

Fabulous Richmond Hill condo with \$ rec facility. Beautiful sunroom with 2 walk-outs to terrace & gardens. Master boasts 4 pc. ensuite with huge soaker tub & separate shower & large walk-in closet. Located off Yonge St. N. of Hwy. 7. Call **Jodie\*** today. 04-283-99

**SOLO**




**JA** Johnson Associates  
HALTON LTD., REALTOR

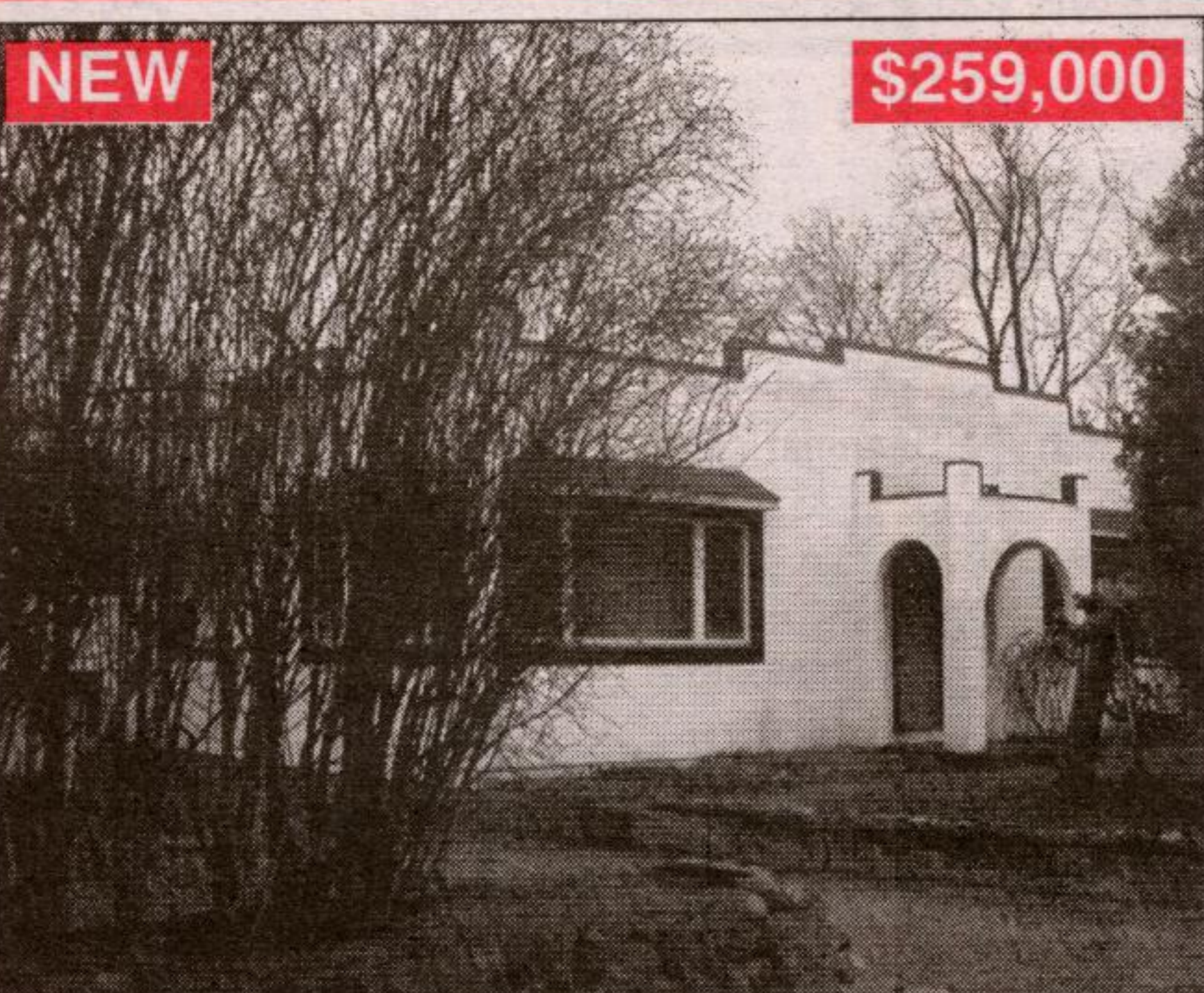
**Mary Maan\*** (905) 877-5165  
\*Sales Rep. Local/Toronto

**Tony Maan\*** (905) 874-3040  
\*Sales Rep. Mississauga

Exposing your property to over 20,000 agents through the Toronto Real Estate Board

**BETTER THAN NEW**  
**\$289,900**

Premium lot, less than three years old, backing onto open fields, open concept, great location, an immaculate two story 3 bedroom home with a double car garage, tons of upgrades, kitchen and breakfast area overlooking the fields, gas fireplace, walking distance to all the amenities. Call **Mary\*** or **Tony\*** to view.



**NEW** **\$259,000**

**2200 SQ. FT. BUNGALOW**

On a large lot. Numerous larger new windows. High ceilings, Maple floors, great main floor family room, eat-in kitchen, Corian countertop, Ikea cabinets, large bedrooms with hardwood floors, newer furnace, breakers, Cvac, rental water softener. Main floor laundry, fruit trees, mature garden, commercial 50 year roof, hot water radiator gas heat. Across from 'GO' station. Outside needs some work. Call **Tony\*** or **Mary\*** Maan. 04-253-03



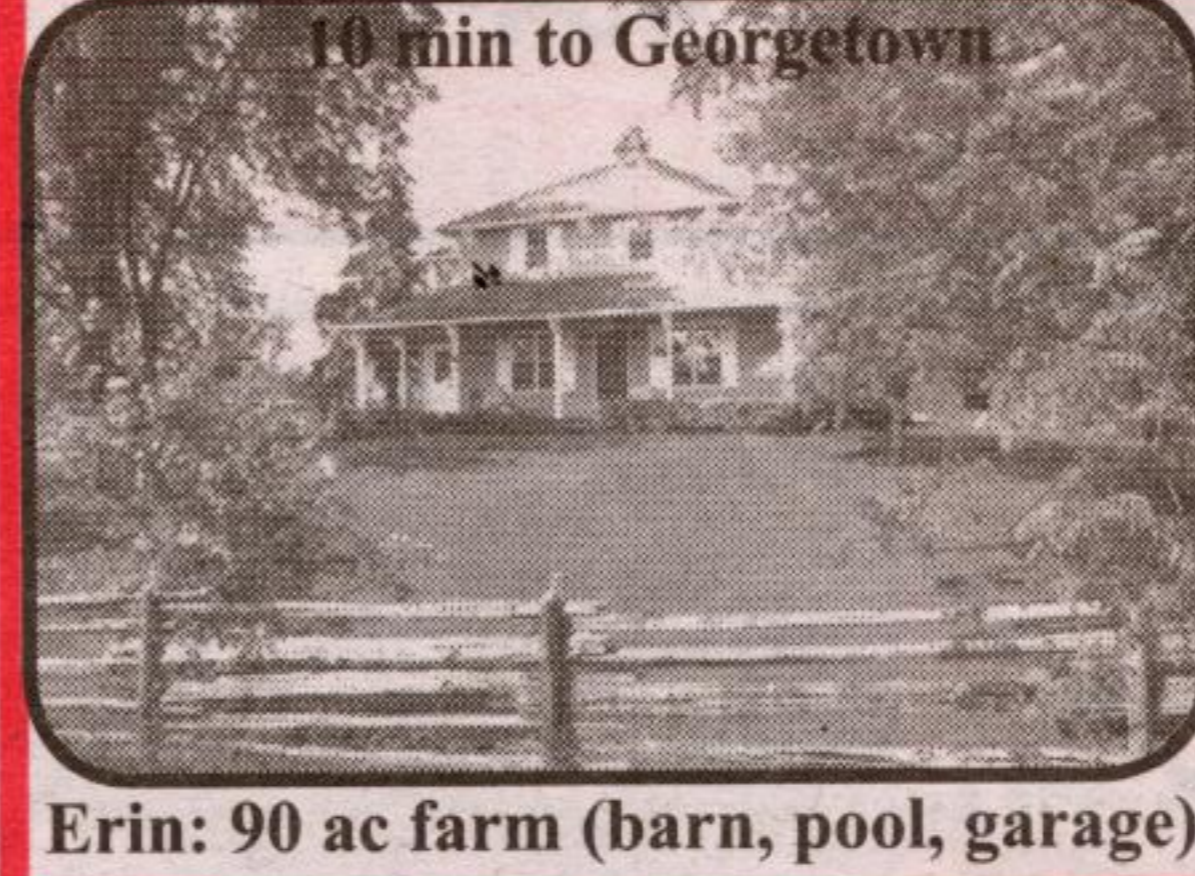
**HALL OF FAME** **RE/MAX**  
Blue Springs Realty (Halton) Corp.

Town & Country Sales Representative  
(905) 877-5211  
1-800-834-5516

Directions & Photos  
<http://maureen.ca>

**NEW** **249,000** **96.8 AC**

**SOUTHGATE:** ON 2 PAVED ROADS. 15 min NW of Shelburne. ~70 ac hay, 25 bush. Being renovated. W of Shelburne on Hwy 89, N on Grey Road 8 to 106599 Southgate Road 10, NW corner. (Proton)



**10 min to Georgetown**

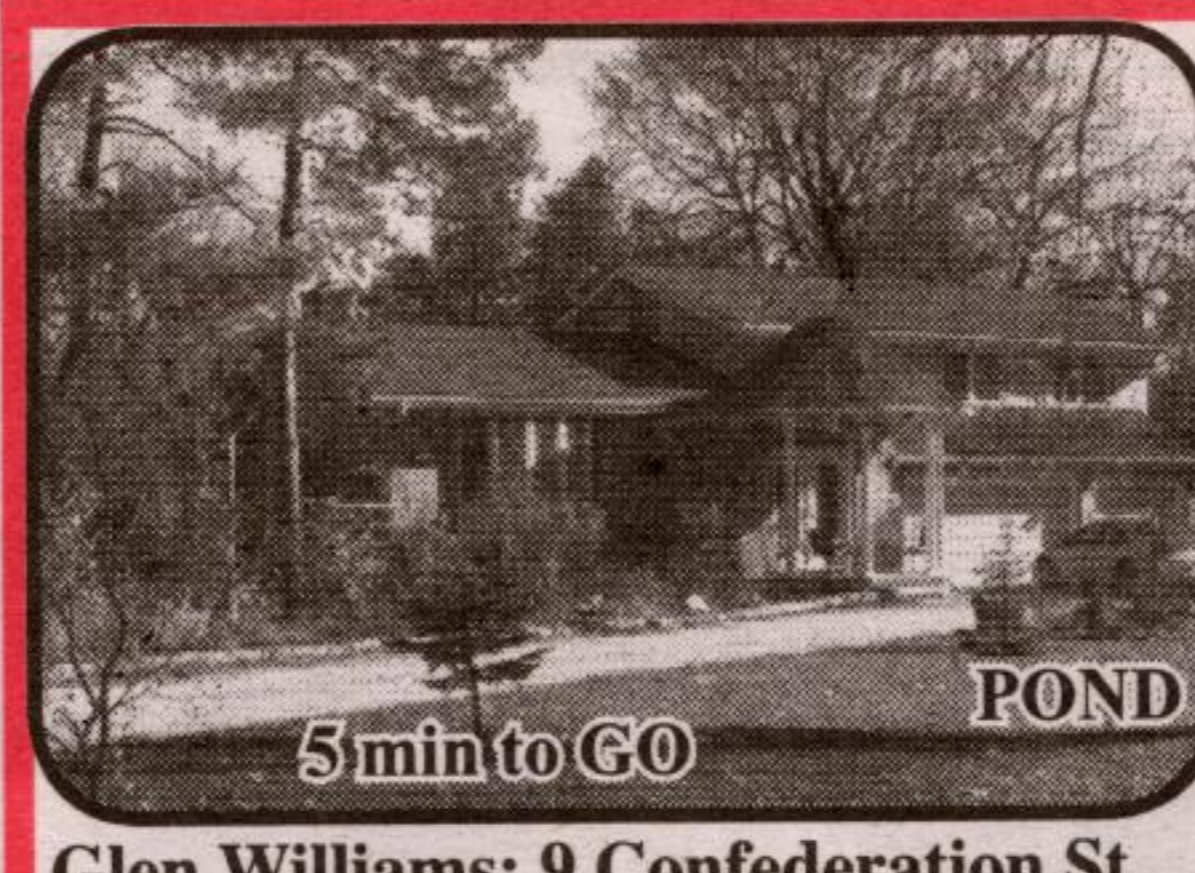
**Erin: 90 ac farm (barn, pool, garage)**

Picture perfect, REPRODUCTION!!! 4 bdrm, 3WR, "Early Canadiana" home o/l twin ponds, set far back from a quiet road on 90 rolling acres. ~25 ac of mixed bush with stand of



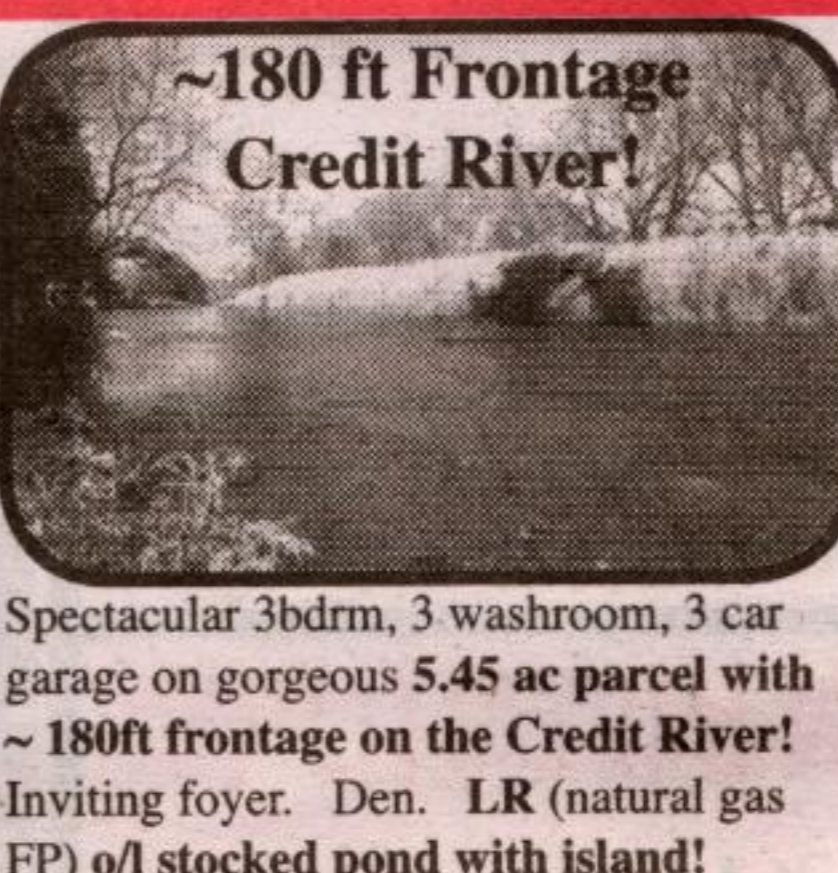
**90 Acres**

hardwood trees & ever flowing stream at the rear. Trails to a high ridge with panoramic views. Pine plank floors. New greenhouse kitchen o/l pool. Excellent well. Inground pool & cabana. Bank barn in excellent condition (recent floor & electrical) presently used for sheep. New 4 car garage. Near Ballinacree, less than 12 min to Georgetown GO



**Inglewood, Caledon: 5bdrm, 1.5 acre**

Exquisite Alba Stone brick, 5 bdrm, 4+washrm, 4 car gar on 1.5 acre with municipal water & nat gas! Granite, hrdwd & ceramic floors. Grand foyer with granite floor & finely crafted solid



**~180 ft Frontage Credit River!**

Spectacular 3bdrm, 3 washroom, 3 car garage on gorgeous 5.45 ac parcel with ~180ft frontage on the Credit River! Inviting foyer. Den. LR (natural gas FP) o/l stocked pond with island!

The DR o/looks the Credit River! New kit with oak cabinets, breakfast bar & greenhouse eating area o/l the Credit! Large MBR with whirltub & w/o to private deck o/l the Credit River! Large family rm with FP, picture windows & w/o to yard & river! Unique & rare property. Perfect for lovers of natural areas & wild life. Mun water & cable available.



**NEW**

Landscaped 5 ac w pond! S of Georgetown! 5 min to Hwys 401, 407 & Miss. 4 bdrm, 2WR, all brick. Lovingly maintained & improved. All vinyl clad windows. Oak hrdwd fls. Beautifully fin lower level w huge fam rm w brick FP w insert, sitting rm & 2nd kit. L shaped sun rm. Double det garage, carport, driveway, rabbit barn & inground pool.

**Halton Hills: 4 bdrm, 2 car gar, 5+ Ac.**



**NEW**

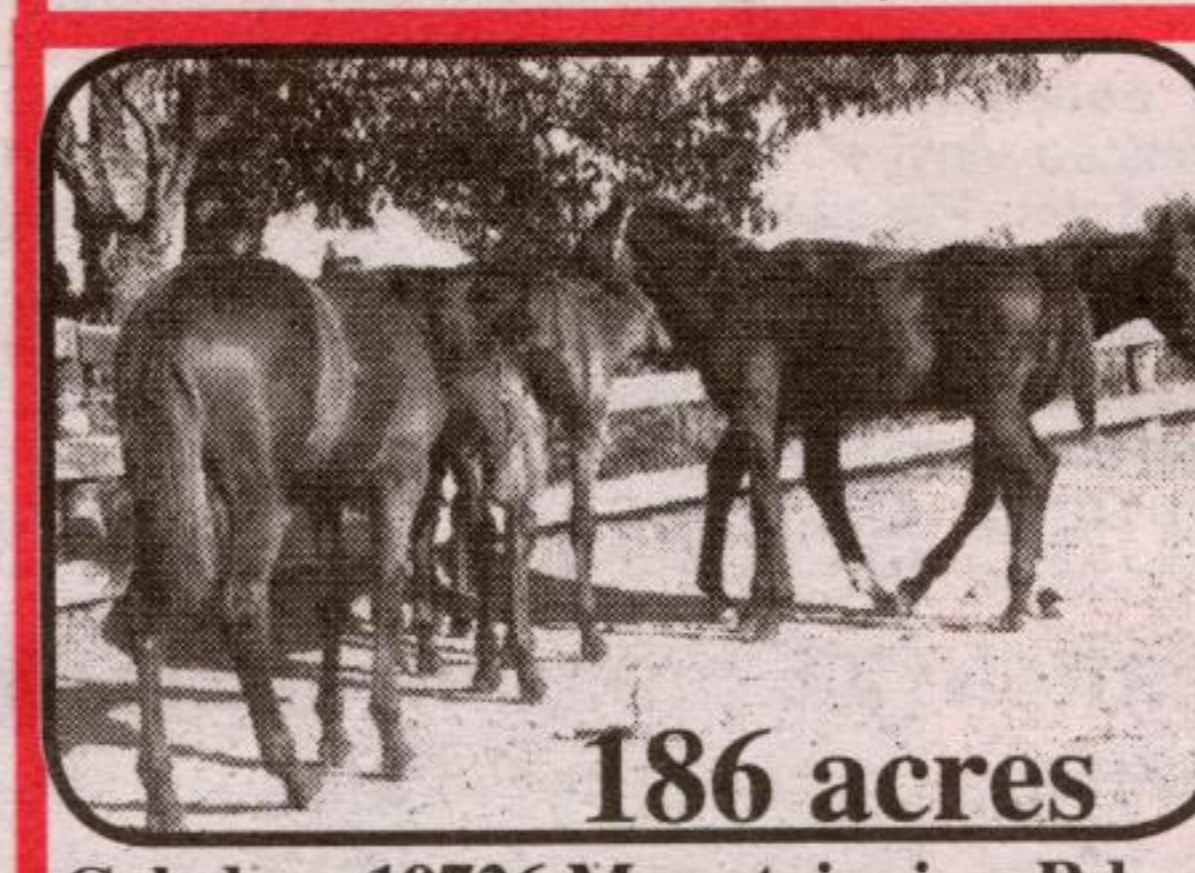
**Georgetown: 3 bdrm, 2WR, on large pie shaped lot o/l treed park. Hardwd floors. Many new vinyl windows. Fam rm with pine wainscoting, gas FP, b/i cabinets. CAC & CVAC. Fenced yd. Cedar deck.**

**\$274,900**



**NEW**

**Acton: 0.144 acres (160ft x 28.47ft) vacant commercial parcel of land at the corner of Main St. N (Hwy 25/7) & Elizabeth St, adjacent to convenience store. Assessed at \$60,000. \$59,900**

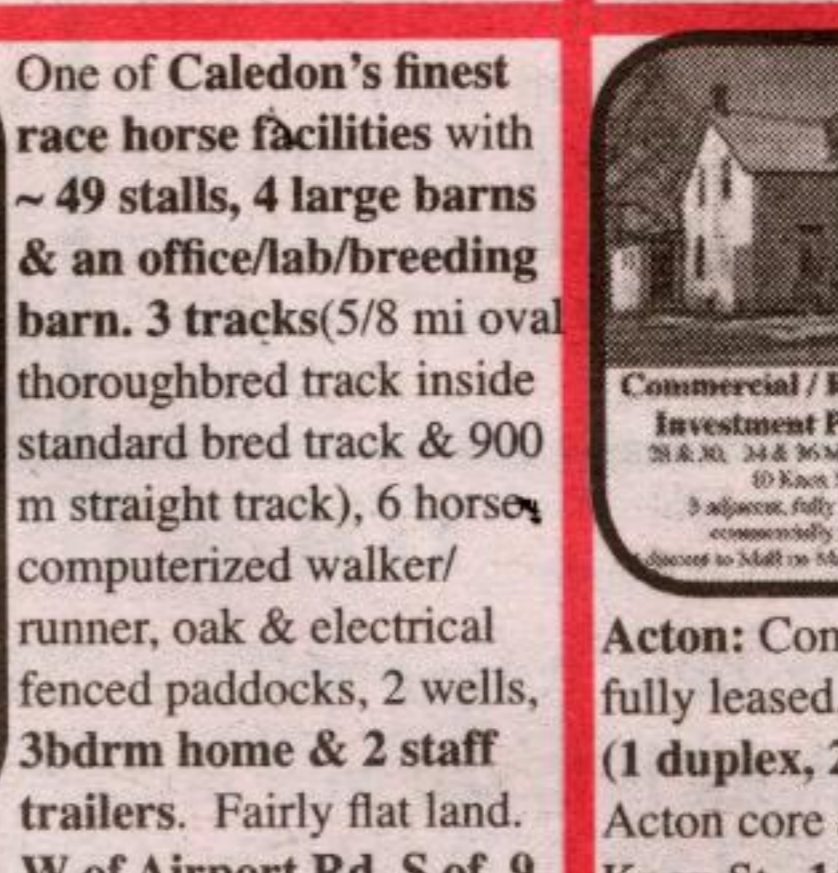


**72046-10th Line**

Fabulous rock/brick home on ~50 acres o/l pond & hills to W. Large foyer; high ceilings; huge Fam rm with FP & w/o to deck; LR(den) with FP & w/o; 5 bdrms (2 with ensuites); 5 WR (2 with whirl tubs); library & 2 fin rec rms. 3 car gar & 2 bdrms built with insulated concrete forms & radiant heat. Black Walnut trees on 30 ac. Swim-in pond.

**Swim-in pond**

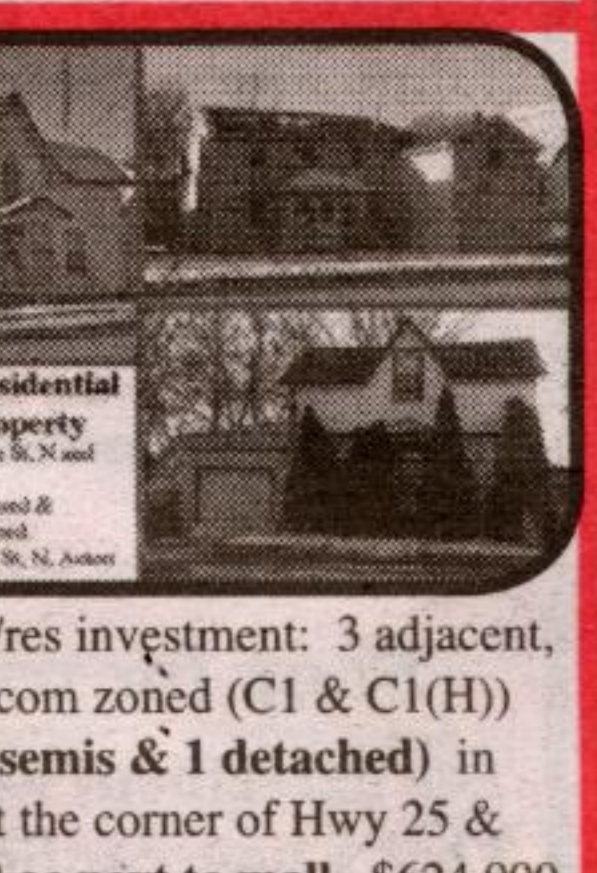
**East Garafraxa: 5bdrms, 50 acres**



One of Caledon's finest race horse facilities with ~49 stalls, 4 large barns & an office/lab/breeding barn. 3 tracks (5/8 mi oval thoroughbred track inside standard bred track & 900 m straight track), 6 horses, computerized walker/runner, oak & electrical fenced paddocks, 2 wells, 3bdrm home & 2 staff trailers. Fairly flat land. W of Airport Rd, S of 9.

**186 acres**

**Caledon: 19726 Mountainview Rd.**



**Commercial / Residential Investment Property**

Acton: Com/res investment: 3 adjacent, fully leased, com zoned (C1 & C1(H)) (1 duplex, 2 semis & 1 detached) in Acton core at the corner of Hwy 25 & Knox St. 1/2 ac next to mall. \$624,900.



**NEW**

Treed 26.75ac with STREAM

Gorgeous treed 26.75acres with 16 Mile Creek. ~5 min N of 401 off Hwy 25 at Speyside. Brick gated entrance. Lit driveway. Underground hydro. Concrete verandah. 4 bdrms, 3+WR, main lev Fam rm. Home renovated 4 yrs ago. Hi-eff FAP furnace. Shop/garage: ~18.6ft x 32.35ft w insul double gar door. Excel well. ~1 ac fenced. ~8 min to Milton GO.

**Separate shop/garage**

**Halton Hills: 7899 15 Side Rd**



**Zoned M1 Outside Storage**

Erin: 2 Hi-Tech indus facilities; 14,400 sq ft (~800 sq ft office), 1.37 ac. Crane rails for 3 ton. Infrared nat gas radiant heat. 16' clear. 7 drive-in doors. 3 WRs. 600 volts, 200 amps, 3 phase. Security.