



Johnson Associates
HALTON LTD., REALTOR

Mississauga (905) 874-3040
Erin (519) 833-9714

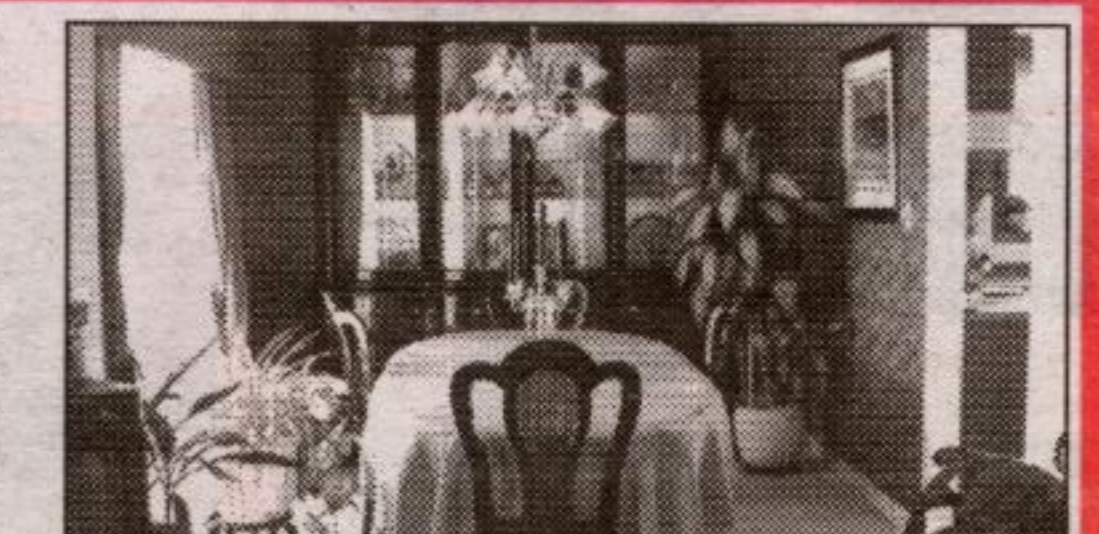
MARTHA SUMMERS*
Proven Performer Since 1988

Sales Rep.



(905) 877-5165

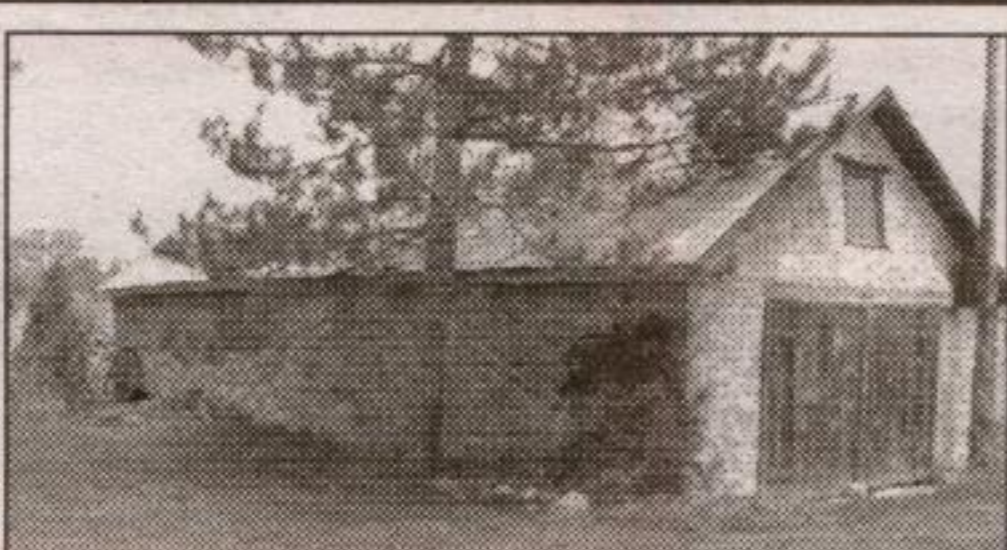
WEBSITE: www.marthasummers.ca E-MAIL: msummers@idirect.com



SUPER RAISED BUNGALOW ON OVER 1/2 ACRE. Finished top to bottom with oak kitchen with breakfast bar, separate living and dining room, floor to ceiling brick fireplace in living room and double sided brick fireplace in recreation room with windows above grade. 3 bdrms + 4th in lower level with 2nd full washroom. Laundry rm also set up for 2nd kitchen if needed. Almost country but walk to town. \$349,000. **Martha Summers***



DESIGNED FOR LUXURY AND RETIREMENT LIVING. Wonderful custom bungalow built by "Arnie Miller" with attention to detail. Huge country kitchen w/o to 3 season sunroom with flagstone flooring & adjoining screened in room. Large family room with floor to ceiling brick fireplace, separate office, spa room with hot tub, 3 bedrooms plus huge garage and extra storage area. All on 12 acres. No expense spared!! \$599,000. **Martha Summers***



CENTURY CHARM FOR THE LADIES - GREAT WORKSHOP FOR THE MEN. Privately situated down a long driveway on 3+ acres but minutes to town. Sunfilled 4 bdrm with large country kitchen, main floor family room with woodstove and walkout to wrap around verandah. Separate living and dining rooms. 4 bay workshop plus stone outbuilding. Vendor ready to Move!! \$379,000. **Martha Summers***



QUALITY CONVERSION - INCREDIBLE HOME. Perfect home or home office with lower level all above grade, separate entrance and sun-filled. Amazing main level, original wood floors, windows and wainscotting. Loft with 2 bedrooms and sitting area and semi-ensuite bathroom plus main level bedroom and bath. All mechanicals have been updated, on a paved road 1 hour to Toronto. Done to perfection!! \$364,000. **Martha Summers***



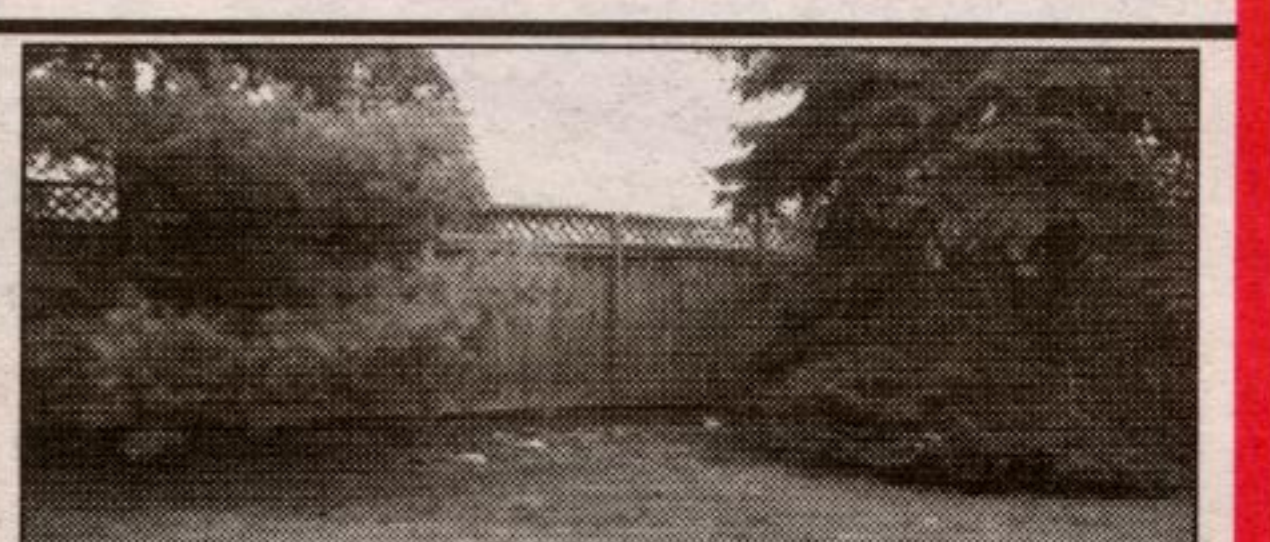
CLASSIC STONE FARMHOUSE - 40 ACRES. All the original charm and character here - well set back with mature hardwood to the north, open fields to the south and west. 3 bdrms, original wainscotting, main floor family room and sun room. Inground pool, separate implement building, small barn with water and hydro suitable for horses. One of a Kind. \$899,900.



ALMOST NEW - VICTORIAN FLAIR. Approx. 2800 sq. ft. of quality in smaller estate subdivision on edge of Village of Erin. Family rm with 2 storey height, double sided gas fireplace, spacious sun-filled eat-in kitchen with pine cabinets, bay windows, upgraded broadloom and trim, main flr. office, windows above grade in partially finished lower level. 4 bdrms complete with heated towel bar in master ensuite. You will love it!! \$439,000. **Martha Summers***



LOOKING FOR THAT PERFECT SHOP?? And a perfect home - it's here. 2.75 acres. Recent open concept home with great room, inlaw suite, wrap-around verandah, huge oak kitchen and loft, master bedroom with walkout to a private balcony. The shop has oversized doors, heat, hydro, and water, mezzanine and office area. Minutes north of Erin in rural setting. \$529,000. **Martha Summers***



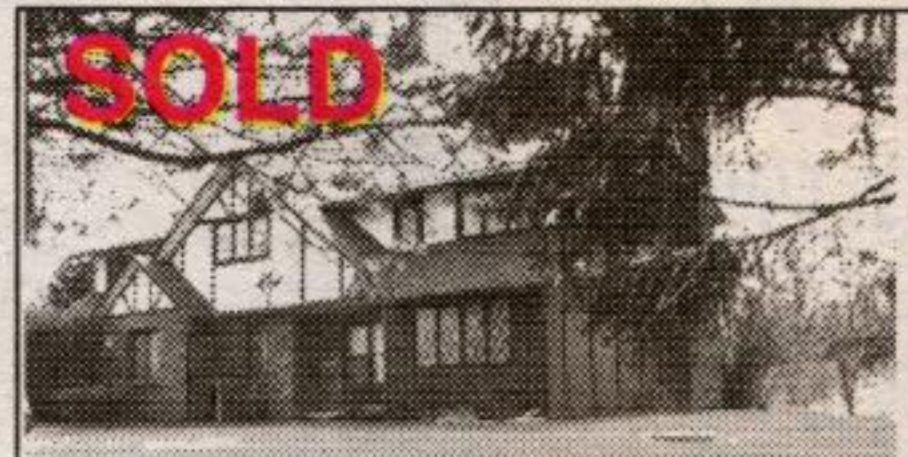
WOW - WHAT A LOT!! \$222,000. Super on a 50 x 198 ft. lot with a 1 1/2 car garage. Charming w/large eat-in oak kitchen, large living/dining room with hardwood flrs & large windows. Renovated 4 piece, finished rec. rm w/gas fireplace, quiet dead end street. **Martha Summers***

MOORE PARK \$239,000. Super 3 bdrm with hardwood floors, eat-in kitchen, main floor family room and partially finished lower level. Access to garage from house, updated furnace, windows and shingles (2003). Private mature fenced yard with garden shed. Available NOW!! **Martha Summers***

LAND LAND LAND

• Terra Cotta - 4.9 acres. \$279,000. **SOLD** • Inglewood - 1 acre, treed, great location. \$180,000 **COMING SOON** WATCH FOR MY NEW LAND LISTINGS

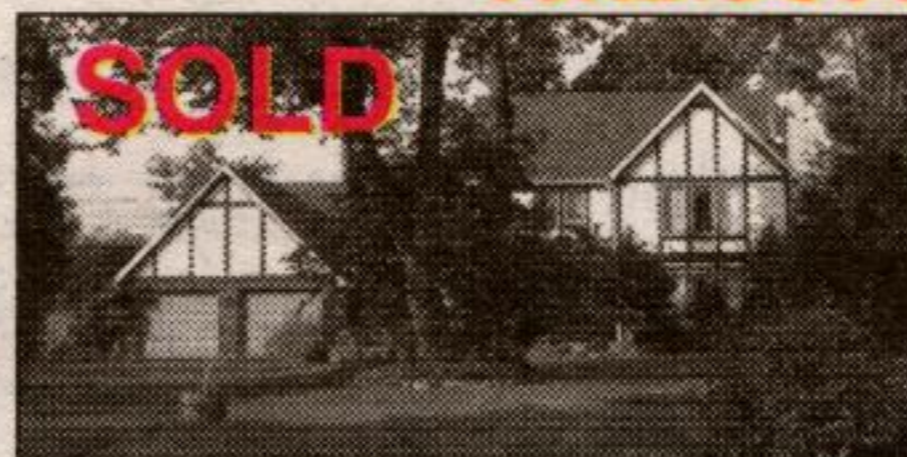
ALL SOLD IN 10 DAYS



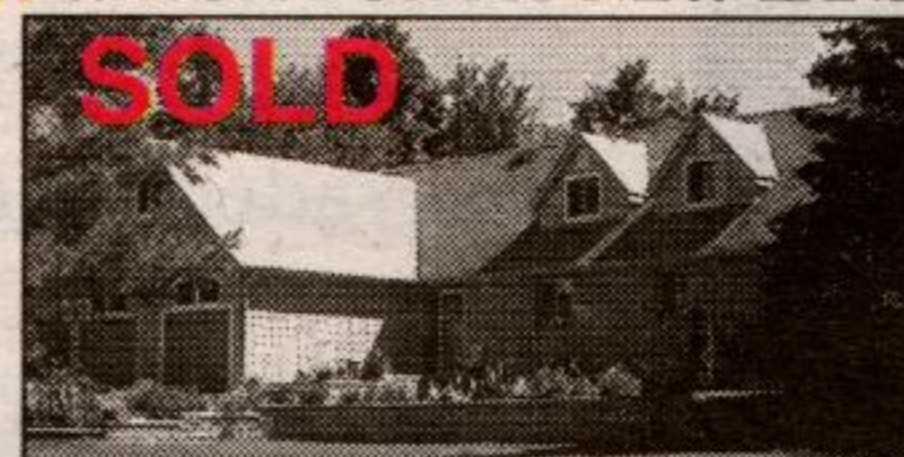
3 Woodland, Belfountain



8 Blue Mountain, Halton Hills



12929 Silvercreek, Halton Hills



9739 Tenth Sdrd., Erin



2 Wallace, Hillsburgh