

new HOMES

Serving the Readers of Halton Hills

Coming Home to Mill Run

Sweeping green spaces with a winding river, a conservation area with picturesque ruins of old grist mills, and oversized home sites in the middle of a picturesque village. Mill Run is the perfect community to call home.

Nestled along the picturesque Eramosa River, the third phase of Charleston Homes' Mill Run is set to welcome you home to the charming hamlet of Rockwood. The historic town boasts all the culture and convenience of a larger centre, with that relaxing away-from-it-all small town ease.

Parks, walking trails, open spaces and tot lots add up to a family friendly haven, while miles of nature trail and winding river make it the perfect home for nature lovers, cyclists and anglers.

Mill Run's third phase is 160 fully detached homes on large 50 foot home sites ranging from bungalows to two stories.

The Devon bungalow model, one of the most popular designs offered by Charleston, is roughly 1500 sq. ft. The expansive great room has an optional vaulted ceiling, for elegant entertaining. Both bedrooms are generous and the master retreat comes complete with a private ensuite, soaker tub and a large walk-in closet. The second bedroom can easily convert to a spare room for hob-

bies, an office, or a spacious guest room for empty nesters. An optional finished basement can be modified to include a game or hobby, or a third bedroom.

The two-story Abby design is a favourite with busy young families.

A formal living and dining room are ideal for entertaining, while the generous family room is a relaxing hang-out for movie nights and family time. It's connected directly to the kitchen, so kids are within sight while mom and dad make dinner.

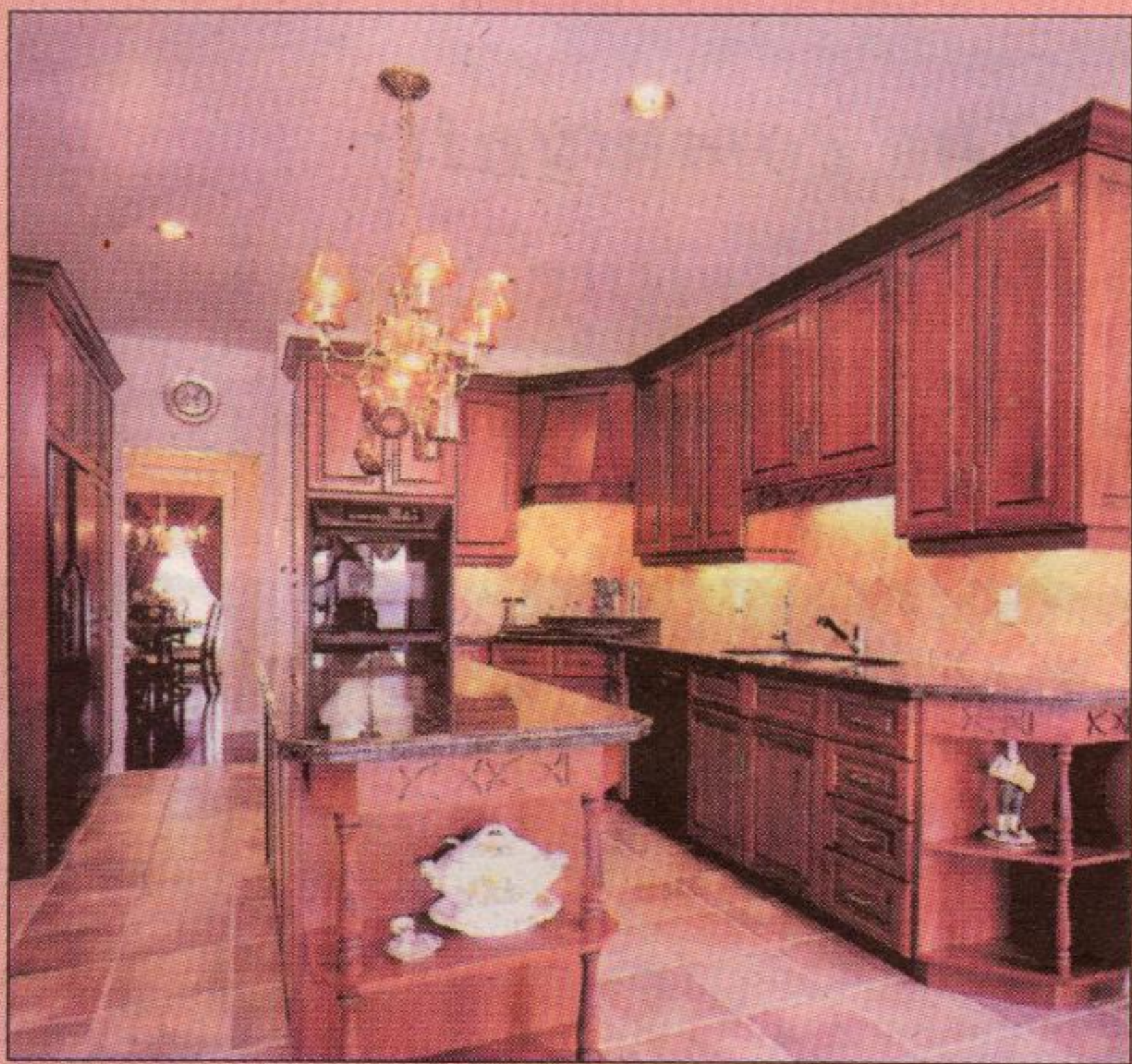
A main floor laundry, home office and powder room provide the ultimate convenience for today's hectic family.

The second floor landing is oversized, with a computer nook. It's a quiet place for kids to hang out or finish homework, but still stay connected to family life.

Bathrooms come with an optional Jack and Jill vanity. The family wash-room can easily service all of the kids, while parents get their own private ensuite.

Mill Run starts at \$260,000, with some home sites backing onto woodlots or open spaces.

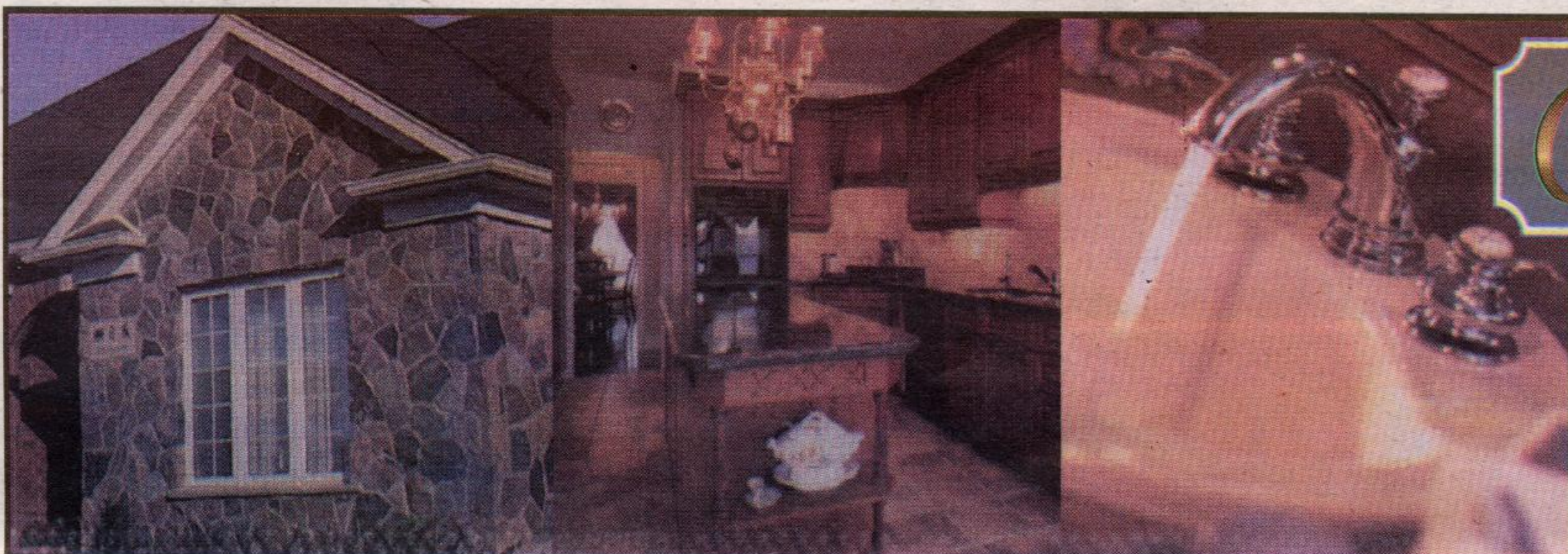
The models are open at the Devon Place site, off Hwy. 7 in Acton, Monday to Friday, noon-7 p.m., and Saturday, Sunday and holidays noon to 5 p.m.



Kitchens connected to the family room make it easy for Mom and Dad to keep an eye on the kids during meal preparation.



Parks, walking trails, tot lots and open spaces along the picturesque Eramosa River are the crowning jewel in Charleston Homes Mill Run development.



Charleston
HOMES

GIVES YOU

MORE
HOME