



GORD* & MICHELE* DAWE
1-888-656-4348

"Give Us A Minute Of Your Time And We Will Give You Years of Experience"

Gordon B. Dawe
 *Sales Rep.



Blue Springs Realty (Halton) Corp.



Michele Dawe
 *Sales Rep.

OPEN HOUSE
 Sunday, November 23rd, 2-4 pm
 204 Barden St., Eden Mills



CHARM, DIGNITY & CHARACTER
SPECTACULAR STONE HOME CIRCA 1865
\$364,900

Situated in quaint Village of Eden Mills overlooking the Mill Pond. Front porch for lazy summer days. Front parlour with pine floors & wainscotting. Formal dining room with pine floors & built-in bookcase. Spacious eat-in kitchen with ceramic floors & backsplash. Mud room with built-in shelving. Living room with pine floors, crown mouldings & fireplace. Family room with wainscotting, pine floors & woodburning fireplace. Deep sills, high Gothic windows, baseboards. 4+ bedrooms with pine floors. Large master bedroom, sitting area & play room or office. A beauty to behold! 30 min to Mississauga, North, 1 hour to Toronto, 15 min. to Hwy. 401 & Milton. Please view with **Gord*** or **Michele***.



BRICK BUNGALOW ON LARGE TREED LOT IN ROCKWOOD
\$217,500

Bright, eat-in kitchen with walkout to 16' x 16' deck and landscaped backyard with pond. 3+3 bedrooms. Updated windows in '90. Lower level features 3 bedrooms, recreation room, kitchen or 4 pc wash-room. Inlaw potential with separate side entrance. Original owners. Close to conservation and school. Please call **Michele***.



COUNTRY BUNGALOW MINUTES TO GUELPH \$218,900

Large country eat-in kitchen. Separate dining room. Spacious living room with gas fireplace, built-in bar & picture window overlooking fenced backyard. Main floor laundry. Attached workshop/garage with gas heater, workbench, 10' ceiling height, 220 amp service and walk-out to back yard. Walkout from mud room to 24' x 16' wood deck. Recreation room & office.



BEAUTIFULLY APPOINTED BRICK HOME IN PRESTIGIOUS ROCKWOOD RIDGE \$345,000

Wrap-around porch. Bright, spacious, open concept kitchen, breakfast area & great room featuring gas fireplace & crown moulding, walkout from kitchen to patio. Separate dining room with hardwood floors, crown moulding & extra windows overlooking parkland. Main floor laundry. Den/office with crown moulding. Large master bedroom with 2 walk-in closets & 4 pc. ensuite. Central air. Detached double car garage. Landscaped lot with stone wall, cedar hedge & stone walkway. Please call **Gord*** or **Michele***.



GREAT STARTER! SEMI-DETACHED HOME IN MATURE NEIGHBOURHOOD - TOWN OF ACTON \$142,900

Affordable semi on mature treed lot. 2 bedrooms. Living room with hardwood floors, eat-in kitchen with updated flooring. Main floor laundry, 4 pc. washroom on main floor & 2 pc. washroom on 2nd floor. Updated windows in 2000. New eaves/stroughs in 2003. Brick patio in backyard. Detached single car garage. Please call **Gord***.



AFFORDABLE SEMI-DETACHED HOME BACKING ONTO RAVINE \$169,900 - GUELPH

Great family neighbourhood. Living room and dining room combination, eat-in kitchen with walkout to deck. 3 bedrooms. Master bedroom with walk-in closet & ensuite privilege. Partially finished basement with walkout to backyard. Walk-in from garage. Double paved driveway and central air.



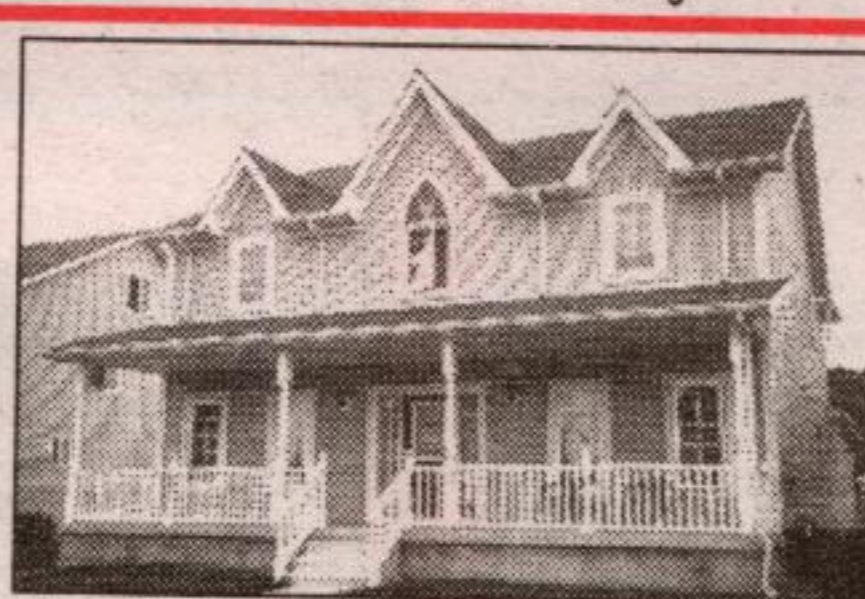
1880 MAJESTIC STONE HOME IN MILTON BUSINESS/OFFICE POTENTIAL - \$399,900

Century home on large treed lot in town of Milton. Classic front porch, country kitchen, formal dining room with wood fireplace, hardwood floors. 10' ceilings, plaster construction, formal living room with bay window, 4 bedrooms, music/office. Detached 2 car garage, ample parking. Close to all amenities. Possible professional office. Please call L.A. re-zoning.



EXECUTIVE BRICK BUNGALOW IN PRESTIGIOUS ESTATE SUBDIVISION IN BELWOOD \$379,900

You've earned the right to enjoy the Best! Large foyer with ceramic flooring, spacious LR & DR, oak kit., with Centre Island & walkout to 16' X 23' deck. Main flr. FR with woodburning FP., main flr. LR, Mst. Bdrm with 4 pc. ensuite & walk-in closet. Large bsmt area with woodburning FP, extra bdrm & walkout to landscaped yard. .83 acres. 3 car garage. A Pleasure to Show! **Gord*** or **Michele***.



BEAUTIFUL FOUR BEDROOM HOME IN PRESTIGIOUS ROCKWOOD RIDGE \$334,900

4 bedroom home on 51' lot. Large foyer with ceramic floors, formal LR & DR with French doors. Eat-in kitchen with oak cabinets & breakfast bar & pantry, overlooking FR with gas FP, main flr. laundry & mud-room. Mstr. bdrm with ensuite with jacuzzi tub & walk-in closet. Full basement. 9' ceilings, central vac. Many upgrades. Just Like New! **Gord*** or **Michele***.



UPDATED HOME WITH COMMERCIAL ABILITY - ROCKWOOD - \$204,900

Walkout from living room to deck & patio, large eat-in kitchen with parquet flooring, stone fireplace with woodburning insert & office area. 3 bedrooms, master bedroom with walkout to deck, walk-in closet and 3 pc ensuite. Finished basement with walkout to garage. Not a drive by. Needs to be seen to be appreciated. Please call **Gord*** or **Michele***.



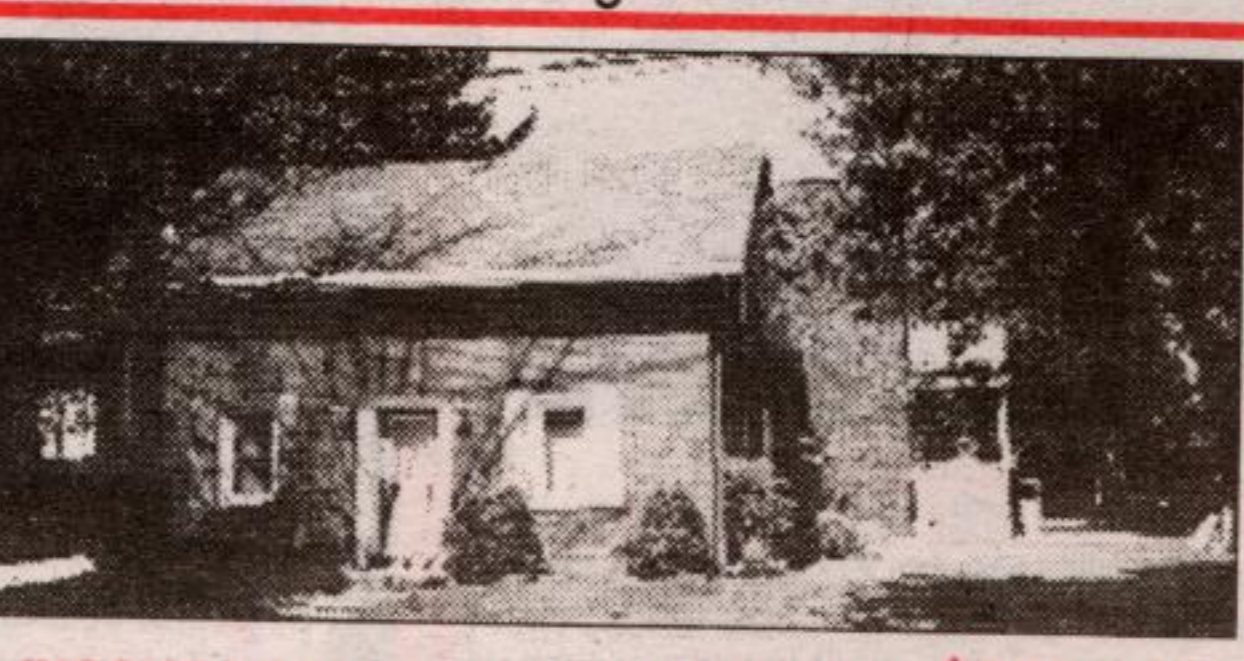
GREAT BUSINESS OPPORTUNITY

Land mark hotel, 17 rooms, dining room, large lounge, patio, room for expansion, near the Olde Hide House. Very reasonable price. Excellent business for growth.



GREAT FAMILY BACKSPLIT IN VILLAGE OF ROCKWOOD \$238,900

Approx. 1891 sq. ft. of living space in the well cared for home. Separate living room & dining area. Modern kitchen with white washed oak cabinets, center island, pantry & walkout to side deck. 3+1 bedrooms. Cosy family room and office. 3 washrooms. Finished lower level with playroom and 4th bedroom. Large fenced backyard with wood deck. Walk-in from garage. Close to walking trails. **Gord*** & **Michele***.



INCOME PROPERTY - TOWN OF ACTON \$259,900

4 bedroom brick large home with garage/shop and ample parking. Eat-in kitchen with oak cabinets and fireplace. Finished recreation room with fireplace. 2 bedroom apartment. Close to Fairy Lake. Please call **Gord*** or **Michele***.

Safety suggestions for fire protection

Did you know that 80 per cent of fatal accidents in the home are caused by fire? Here are some important safety suggestions from RONA, the leading Canadian distributor and retailer of hardware, home improvement and gardening products.

Smoke detectors

There are two types of detectors: ionization sensors that detect rapid fires, and photo-electric sensors that detect incipient fires as soon as they ignite in a sofa, mattress, carpet or other part of your home.

According to Jean-François Gagnon, RONA's training consultant, "the two types are complementary, but the photo-electric sensor is recommended for bedrooms, living rooms and hallways, so people can be warned to evacuate as soon as a fire begins."

The best type of smoke detectors are electric with battery backup, because they can be connected to a central security system (fire station) and because they can be linked together. This way, if a fire begins in the basement, the alarm will sound throughout the house, not just on the bottom floor.

Carbon monoxide detectors

If you have a fireplace, an oil or gas furnace, or a backup stove, you should install carbon monoxide detectors. This odorless and colorless gas can be very harmful and even fatal in high concentrations.

Gas detectors

For homes with natural gas or propane appliances we highly recommend detectors that warn of leaks that can lead to explosions. For a natural gas appliance, the detector must be placed a few feet over the unit, while propane gas detectors must be

placed in the electrical outlet at floor level.

Extinguishers

For complete protection, the best kind of extinguisher is the "A - B - C" type (wood/paper - liquid/oil - electric fires).

We recommend installing at least one extinguisher on every floor, preferably in the kitchen, bedrooms, workshop, laundry room and near the stairways.

Ladder

It's a good idea to plan an emergency exit other than the stairway in case it is blocked by fire. An emergency ladder can be of crucial importance, especially if the bedrooms are on the second floor.

Insurance

Having your home inspected by a professional is another great way to protect yourself from the risk of fire. It's also a good idea to consult your insurance agent before adding auxiliary heating systems or chimneys, so you can check on installation standards and add a rider (extra clause) to your policy for protection if required.

Family valuables

An inventory of valuables, such as jewelry, notarized documents, insurance policies and photos, should be placed in a safe in the basement or near an exit. Using a safety deposit box at a bank is another good option.

Christmas tree

A simple reminder: real Christmas trees should NEVER be burned in the fireplace. Christmas trees burn too quickly and too intensely and may start a chimney fire and set off a blaze. Artificial trees with mini-bulbs are much safer.

Need more information? Your local RONA expert can answer all your questions "About the House." Or go to rona.ca for practical advice and hundreds of tips.

— News Canada

BLUE SPRINGS REALTY (Halton) CORP.
(519) 853-2086
1-888-833-1945

It's The Experience!

JOHN BARTLETT
 ICI Representative
 RESIDENTIAL AND COMMERCIAL

MARILYN WORRALL
 Sales Representative

"VILLAGE LIVING"

\$264,900 **NEW**

Ideal starter home. Located in Caledon East. Walking distance to everything. New shingles in October, ceramic tiles & jacuzzi tub in bath, woodburning FP and extensive landscaping with waterfall/pond/bridge. A charming home with lots of character. Unfinished loft area would be ideal for "at home" office. For more details, call **John*** or **Marilyn***. Offered at \$264,900.

"A PIECE OF HISTORY"

SOLD

Original part of this home (one storey apt. at rear) built in 1870's. The 2 storey brick addition was constructed in early 1890's. An imposing structure in this small town of Acton. Lots of upgrading completed with a bit more to be done. You won't be disappointed when you see the wide baseboards, unique trim, sweeping staircase. It really is "worth the drive". Offered at \$229,900. Call **Marilyn*** or **John***.

BLUE SPRINGS GOLF COURSE LOT

Great 1.4 acre vacant estate building lot overlooking Blue Springs Golf Course. This is one of the only two lots not built on in this exclusive development. Use your own plans and builder or listing agent works with three local custom home builders. Offered at \$214,900. Call **John Bartlett***.

PRIVATE COUNTRY RETREAT WITH 3.4 AC., WITH 10 AC., WITH 26 AC.. BUYER'S CHOICE

Large family home, situated on scenic acres. Close to Acton/Rockwood & 401. This 5 bedroom, 3 bathroom home is spacious. Custom built to the highest specifications. You won't be disappointed! I look forward to showing you this special property. Small barn/storage shed. Offered at \$399,000. with 3.4 ac. Priced higher with more acreage. Call **John*** or **Marilyn***.

ROOM TO ROAM

NEW **\$624,000**

7200 sq. ft. industrial building on 2.6 acres. Potential for up to 40,000 sq. ft. existing building, 20 ft. clear height, radiant heating, drive in 12' x 14' door, 600 volt, 200 amp power. 1500 sq. ft. office on two levels, two bathrooms in production area, two bathrooms in office area. Building built - "very solid" - crane capable. Call **John Bartlett***.

"SPECTACULAR"

SOLD **NEW PRICE \$349,000**

Home with amazing views, close to "Erin". Stunning open concept home only 6 years old, built by Charleston Homes. LR with gas FP, cathedral ceilings. Antiqued Maple cabinetry. Lower level with walkout. Loft/home office, 4 BR, 2 baths. Extensive decking. Why not come and see this great home offered at \$357,900. Call **John*** or **Marilyn***.