



Thinking of buying or selling?
 Call Brenda MacDonald* for
 a FREE market evaluation
 (905) 877-5165

Brenda MacDonald
 *Sales Rep.

Johnson Associates
 HALTON LTD., REALTOR

Real Estate Digest

Wednesday, October 22, 2003
 12 Pages

Bill McKeown

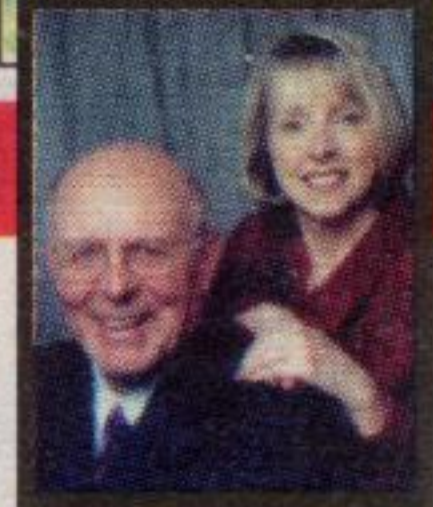
Associate Broker
 877-5211

RE/MAX
 BLUE SPRINGS
 REALTY (Halton) CORP.



EVERYTHING IS SELLING!

- We are running out of Listings!
- Strong Market - Demand High!
- Will continue thru the Winter!
- Mortgage Rates as low as 3.4%
- Don't Wait! **CALL US**



LYNN &
 JOHN
 DREWRY*
 *Sales Reps.

(905)
 877-5165

 JA
 Johnson Associates
 HALTON LTD., REALTOR
 www.lynnandjohn drewry.ca



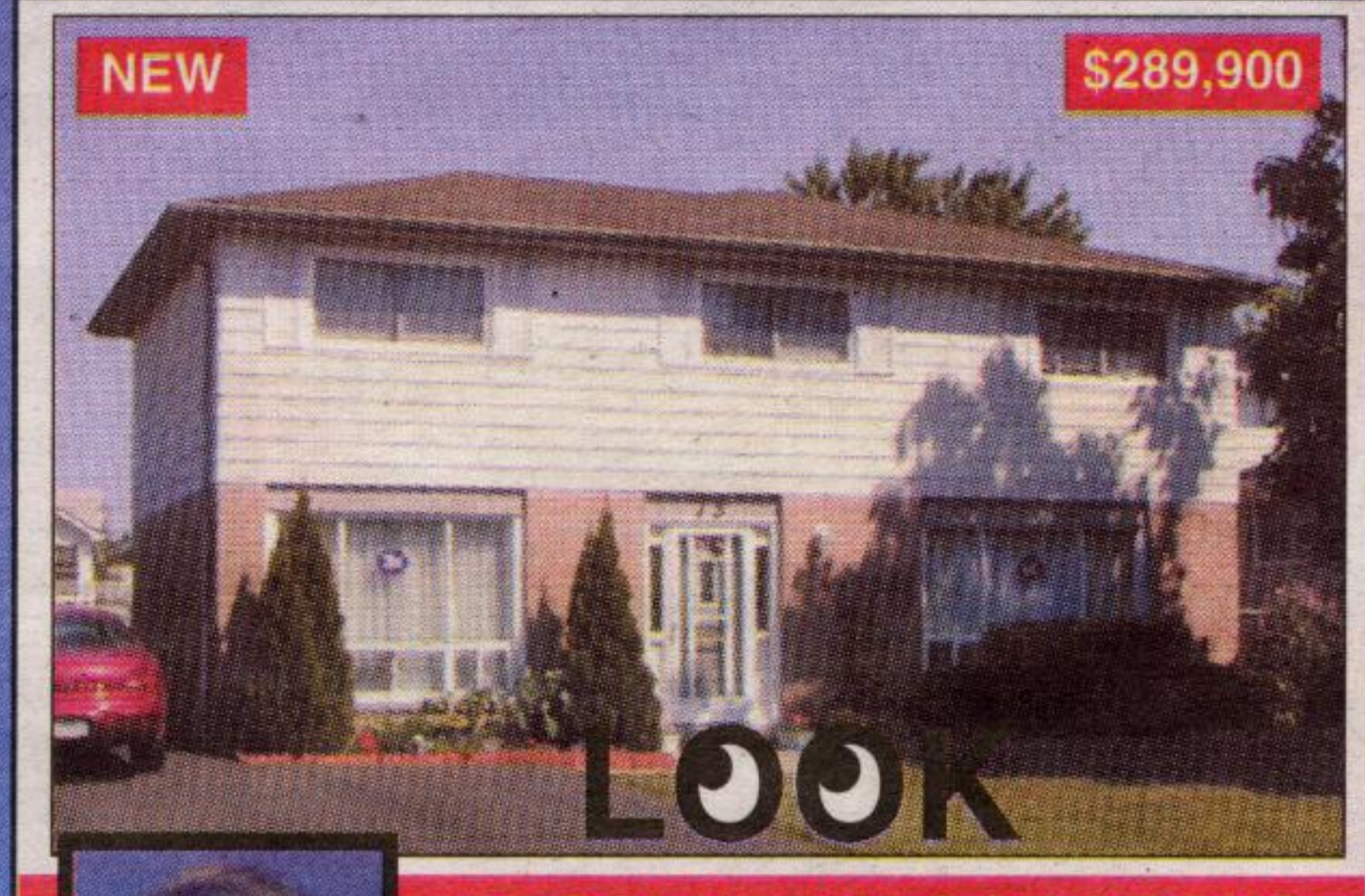
JOANNE
 GARDNER*
 *Sales Rep.

905-
 874-3086

**TWO GORGEOUS
 TERRA COTTA PROPERTIES**

1. **TERRA COTTA RIVERFRONT** - Winterized 3 bdrm cottage on rare double frontage lot beside Credit River. Fish, canoe out your own back door. \$245,000.
2. **BELFOUNTAIN ESCARPMENT LOT** - (no photo available) 9 acres western Escarpment exposure on beautiful Caledon Mountain Drive. Well already drilled, completely natural setting. \$399,000.

ROYAL LEPAGE RCR
 Realty
 Independently owned & operated



MIKE
 ADAMS*
 *Sales Rep.

(905)
 877-5211

ABSOLUTELY GORGEOUS

On quiet little street, very private, super location, mature huge pool size plus lot, mature trees, etc. This is a great location, very mature location. Check out the renovations: oak kitchen, updated windows, roof and furnace. Large bedrooms. Master ensuite. This is a must see!

RE/MAX BLUE SPRINGS
 REALTY (Halton) CORP.



JANET
 McKEOWN*
 *Sales Rep.

(905)
 877-5211

IN TOWN ON 88 X190 LOT

'NICE!' 3 level - 3 bedroom sidesplit, with parking for at least 8 cars, main level renov to gorgeous open concept. Updated kitchen cabinetry - lots of room to cook and entertain. HW floor in upper level. Large finished rec room with large windows and bar. 200 amp service. Workshop at rear of prop. 1-4 pc., 1-2 pc. Visit this on line at MLS W302473.

RE/MAX BLUE SPRINGS
 REALTY (Halton) CORP.



MAUREEN
 PLUCINSKY
 *Sales Rep.

(905)
 877-5211
 1-800-834-5516

**EAST GARAFRAXA:
 5 BDRMS, 50 ACRES**

Fabulous Owen Sound ledge rock & brick home on ~ 50 ac overlooking pond & hills to West. Large foyer; high ceilings; huge Family rm with FP & walkout to large deck; LR (den) with FP & walkout; formal DR; 5 bdrms (2 with ensuite); 5 washrooms (2 with whirl tubs); library & 2 finished recreation rooms. 3 car gar & 2 bdrms built with insulated concrete forms & radiant heat. Black Walnut trees on 30 ac at the rear. Swim-in pond. Min to: grade school in Marsville, Belwood Lake, Hillsburgh & all amenities in Orangeville. \$749,000.

More photos & directions → <http://maureen.ca>
 RE/MAX BLUE SPRINGS
 REALTY (Halton) CORP.



MARTHA
 SUMMERS*
 *Sales Rep.

(905)
 877-5165

**OPEN CONCEPT BUNGALOW
 \$299,000**

Fabulous, large cherry kitchen open to living & dining area. Walkout to rear deck. 3 bedrooms, full ensuite & walk-in closet in master bedroom. High ceilings, all brick, oversized 2 car garage on large lot in estate subdivision. Walk to town & arena. **Martha Summers***

 JA
 Johnson Associates
 HALTON LTD., REALTOR
 www.marthasummers.ca email: msummers@idirect.com



ANNA
 LOSTRITTO*
 *Sales Rep.

(905)
 877-5165
 (Local/Toronto)

WHAT ARE YOU WAITING FOR?

Executive mostly stone home with main floor granny/nanny/bachelor suite!!! Everything you wanted and more! Large kitchen with breakfast bar, wood floors, sliding walkout to patio, open concept with large 2 storey great room with palladium window, separate den and dining room. 2nd kitchen on main level, 4 bedrooms, 4 washrooms. Huge loft over self-contained, main floor granny/nanny suite with separate entrance!!! Super location in an area of newer executive homes!!! Hurry!! Call me today!! 03-515-91

 JA
 Johnson Associates
 HALTON LTD., REALTOR
 alostritto@trebnet.com
 www.haltonhills.com/annalostritto



JESSIE
 JACOBS*
 *Sales Rep.

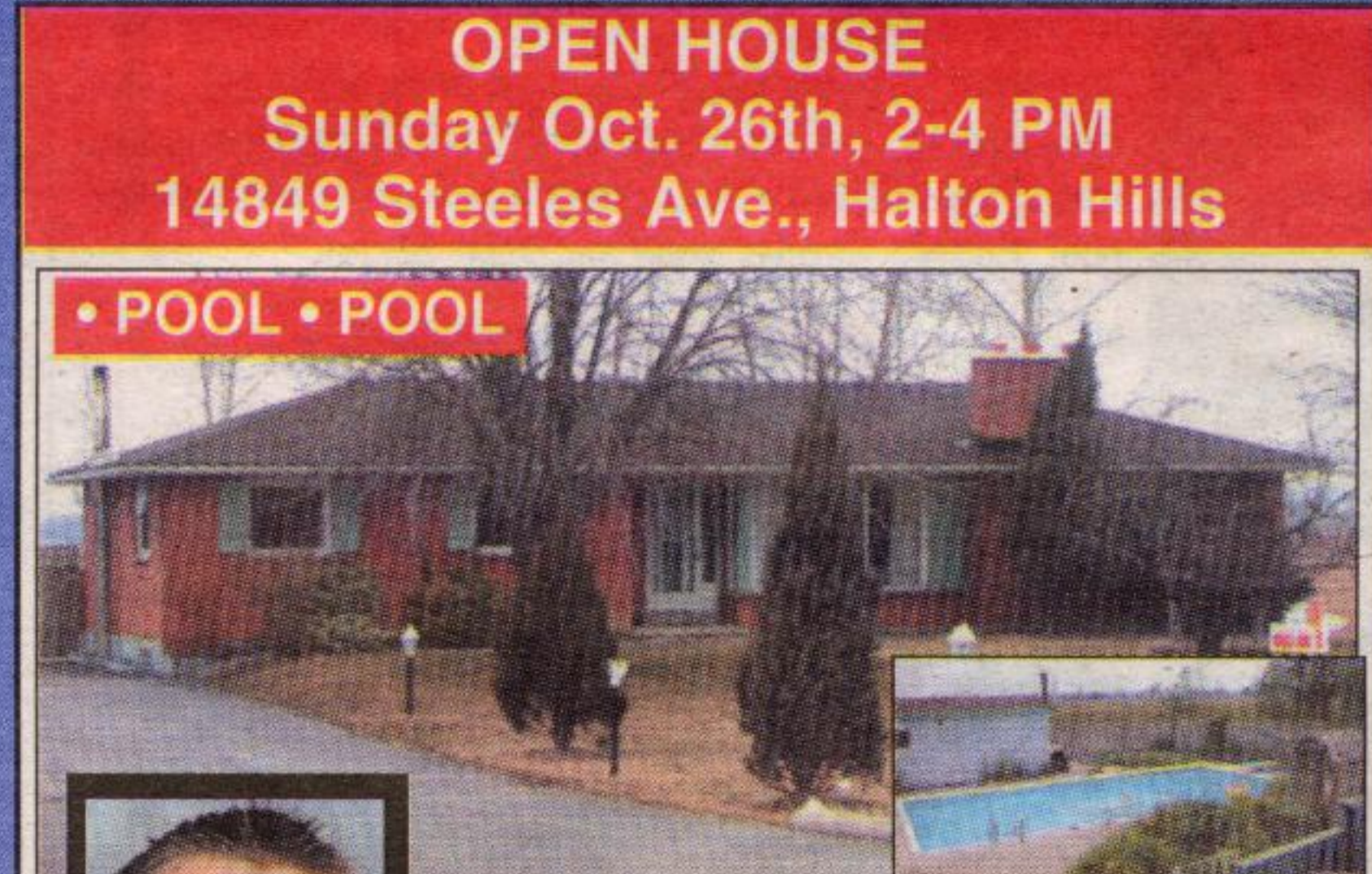
(905)
 877-5165
 (Local/Toronto)

LOVELY 2 STOREY HOME

offers 4 bedrooms, 3 bathrooms, open concept kitchen/family room, 3 walkouts, double car garage, huge wrap-around verandah, open staircase, all nestled on a 1 acre lot. If you are looking for country living with city conveniences, then look no further!! \$409,900.

03-621-31

 JA
 Johnson Associates
 HALTON LTD., REALTOR



MIKE
 KRAUSE*
 B.B.A.

*Sales Rep.
 (905)
 877-5211

**COUNTRY PROPERTY SOUTH
 OF GEORGETOWN**

Gorgeous three bedroom, all brick, ranch bungalow set on a 1 acre parcel of land. Features include 25x28 garage/shop with additional buildings for storage etc. Lots of parking. 18x40 inground pool with lots of concrete decking. 20x20 deck off kitchen. Property backs onto farmland. Other features include stone FP in LR, woodburning stove in newly renovated rec room & office area, main floor laundry, CVAC, hardwood floors in LR & DR, newer furnace, breakers. Priced at \$359,900. Call Mike Krause* to view.

RE/MAX BLUE SPRINGS
 REALTY (Halton) CORP.