

CAROL WOOD* *Sales Rep.
905-877-5211 Web: www.carolwood.ca
 E-mail: cwood@trebnet.com
RE/MAX BLUE SPRINGS REALTY
 (Halton) CORP.



NEW

**LISTINGS NEEDED
BUYERS WAITING**

The Fall Season Is Upon Us.
Call Carol* today for a
FREE Market Evaluation
of Your Home.

ATTENTION

All singles, career persons and first time buyers. This almost new town home was built with you in mind. Located peacefully by the banks of the Credit River with Niagara Escarpment trails at your door step, this cute and cozy open concept 2 bedroom home offers many features including ceramics, oak kitchen, quality broadloom and walkout to private deck and yard. A small complex of only 45 residences, offering low maintenance fees and well kept landscaping, it's the perfect place to call home. \$199,000. Find out more by calling **Carol Wood*** today.



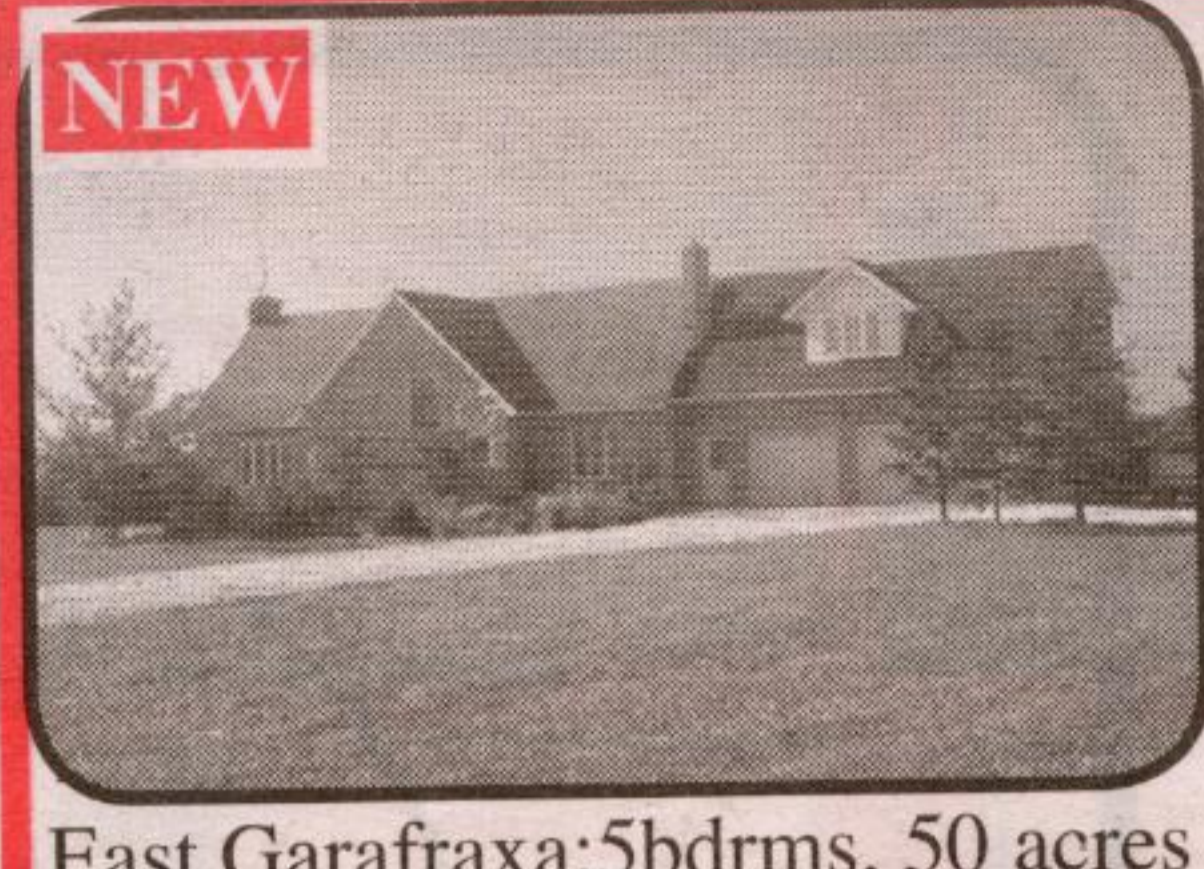
OFFICE SPACE FOR RENT:

Small office, approx. 500 sq. ft. plus washroom, suitable for one or two persons. Busy location. Available immediately. Call **Carol*** for details.

HALL OF FAME **RE/MAX**
 Blue Springs Realty (Halton) Corp.
 Town & Country Sales Representative
(905) 877-5211
1-800-834-5516
 Directions & Photos
<http://maureen.ca>

Maureen Plucinsky B.Sc.

VISIT MY WEB SITE for PHOTOS & DIRECTIONS
<http://maureen.ca>



East Garafraxa: 5bdrms, 50 acres

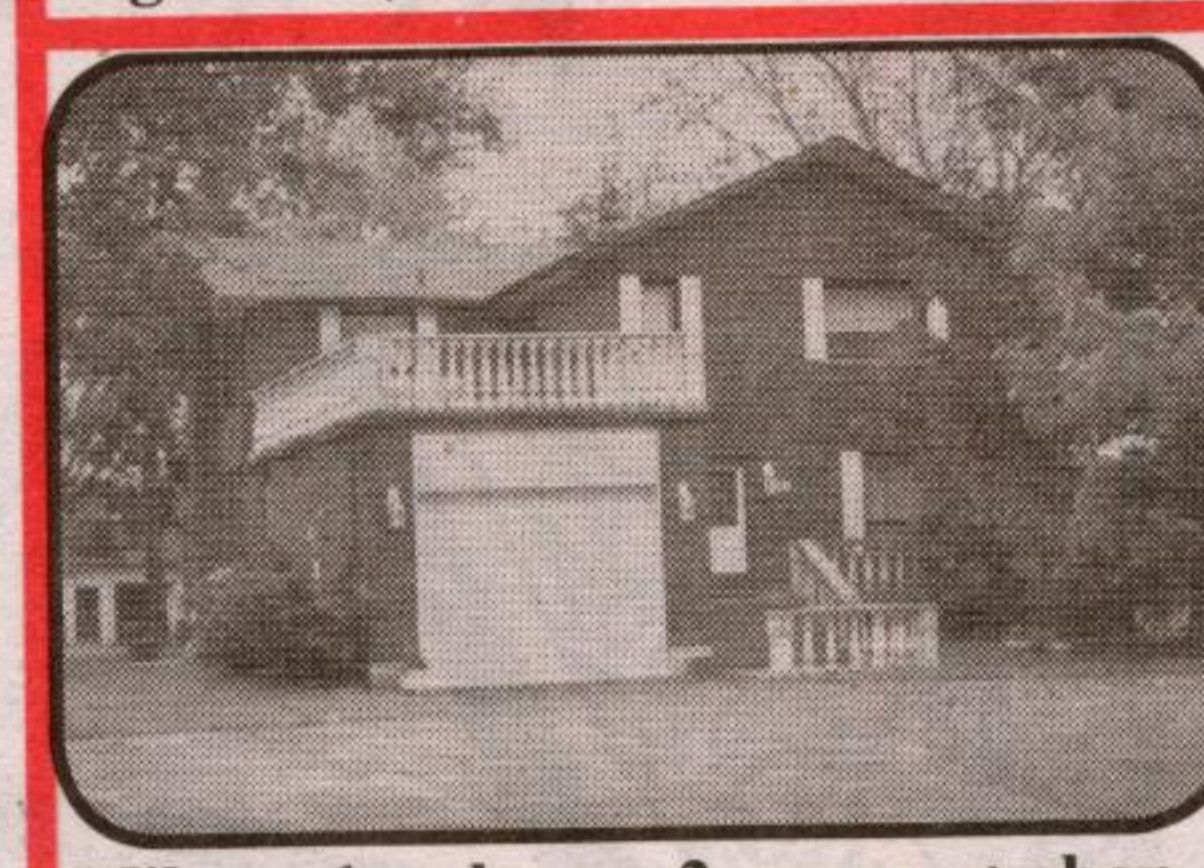
Fabulous *Owen Sound* ledge rock & brick home on ~ 50 ac overlooking pond & hills to West. Large foyer; high ceilings; huge Family rm with FP & walk-out to large deck; LR(den)



Swim-in Pond

with FP & walk-out; formal DR; 5 bdms (2 with ensuite); 5 washrooms (2 with whirl tubs); library & 2 finished recreation rooms. 3 car gar & 2 bdms built with insulated concrete forms & radiant heat. Black Walnut trees on 30 ac at the rear. Swim-in pond. Min to: grade school in Marsville, Belwood Lake, Hillsburgh & all amenities in Orangeville. \$749,000

oak staircase w open risers & twin balconies spanning 3 floors. Open concept LR, raised piano conservatory & DR. Kitchen with large breakfast area o/l solarium & Family rm with coffered ceiling, wall of windows & gas FP. Huge MBR w opulent ensuite & w/o. Low "E" vinyl windows. 1000+ft TREX deck with spa. Gorgeous landscaping. Fab views. 20 min to airport.



Inglewood, Caledon: 5bdrm, 1.5 acre



Milton: 1ac, home, 2 car gar + shop

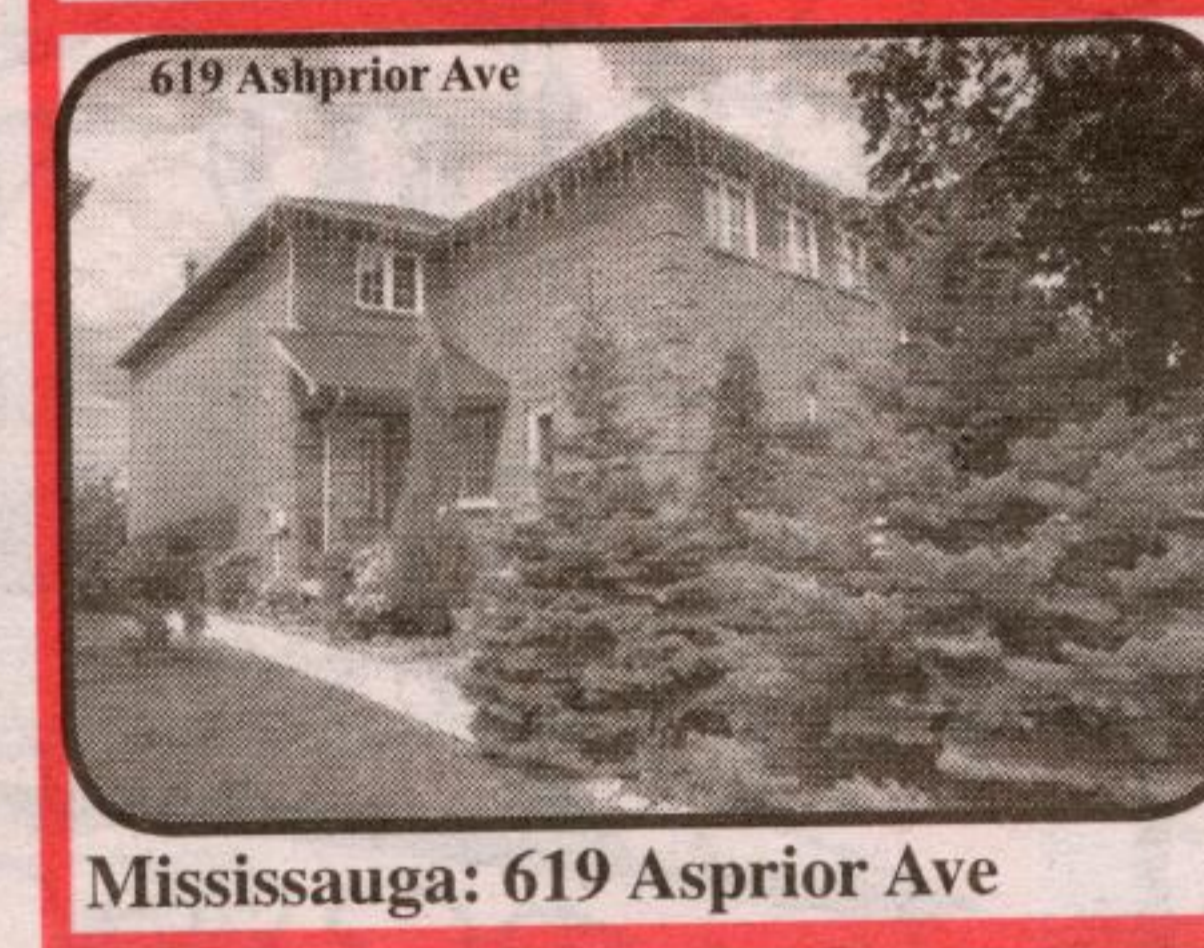
level, insulated, drywalled, partly heated (woodstove) shop (~30ft by ~60ft) with septic system, water, hydro, driveway, 2 man doors & a truck door. Magnificent mature trees & vegetable garden. North of Eglinton. Perfect location for quick access to Toronto. Country living in the city. Plenty of room for in-laws & nanny. Drive by. 5168-8th Line, Milton.

ESTATE LOT AND HOME IN TOWN

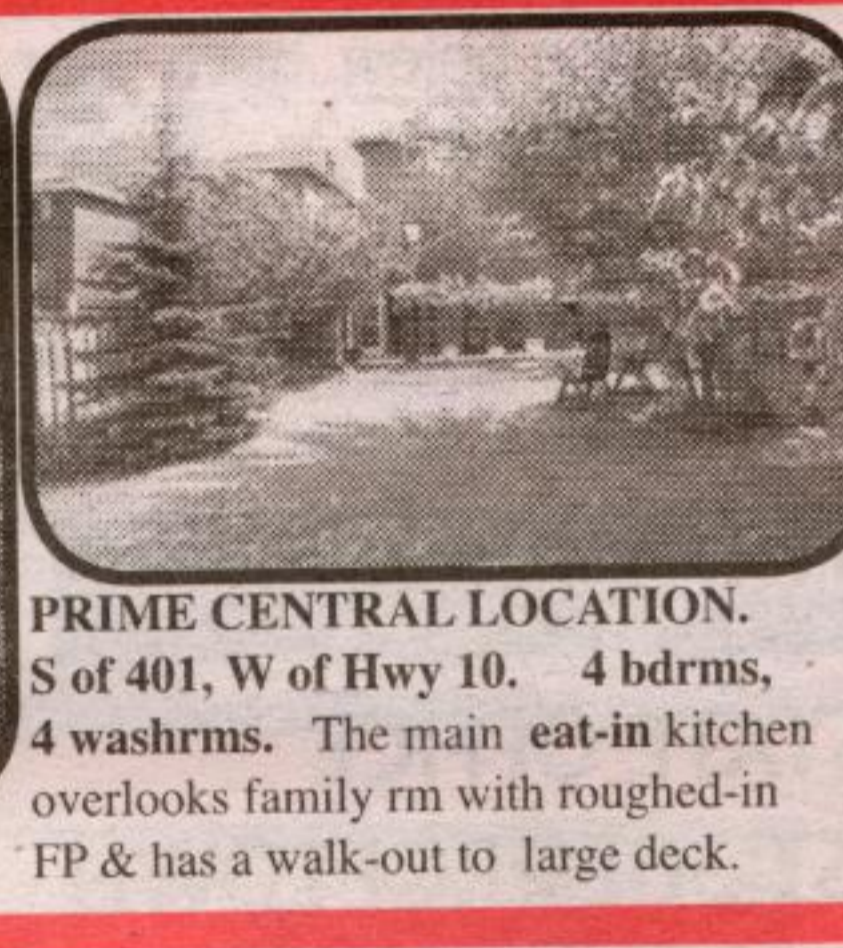
Country living with all the amenities. Approx. 1 acre with 3700+ sq. ft. Victorian reproduction surrounded by wooded conservation lands. 4 bedrooms including finished loft. C/A, C/VAC, radiant heated hardwood & ceramic flooring. Oversize gourmet kitchen with oak cabinetry, built-ins, granite island, tile counters. Two fireplaces, formal living and dining room, main floor den and laundry. Multiple French doors, walkouts to 19 x 33 kidney shaped heated pool with fibre-optic lighting, jacuzzi, and wrought iron fencing. Landscape and decor is picture perfect - one of a kind! \$549,900.

PRIVATE COUNTRY RETREAT WITH 3.4 AC., WITH 10 AC., WITH 26 AC., BUYER'S CHOICE

Large family home, situated on scenic acres. Close to Acton/Rockwood & 401. This 5 bedroom, 3 bathroom home is spacious. Custom built to the highest specifications. You won't be disappointed! I look forward to showing you this special property. Small barn/storage shed. Offered at \$399,000. with 3.4 ac. Priced higher with more acreage.



Mississauga: 619 Asprior Ave



PRIME CENTRAL LOCATION. S of 401, W of Hwy 10. 4 bdrms, 4 washrms. The main eat-in kitchen overlooks family rm with roughed-in FP & has a walk-out to large deck.

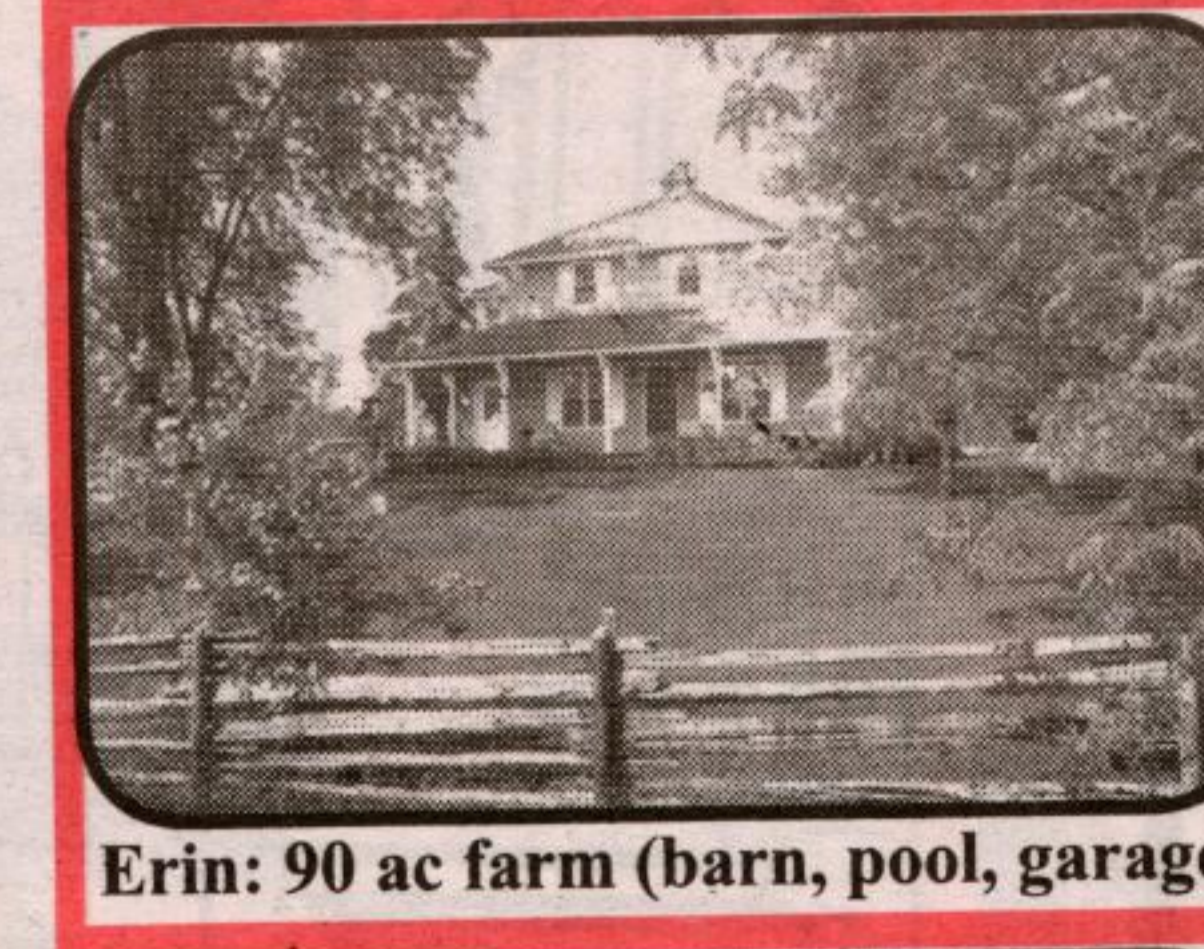
4 large bedrooms. Finished bsmt with 2nd kitchen, 3 piece washrm, large recreation rm, storage rm, cold rm & walk-out to an enclosed patio. Gorgeous landscaping. Huge patio. Private fenced yard. Parking for 5 vehicles. No back yard neighbour. Within walking distance to a major shopping centre and all amenities. \$364,500

"SPECTACULAR"

Home with amazing views, situated in executive subdivision, close to "Erin". Stunning open concept home only 6 years old, built by Charleston Homes. LR with gas FP, cathedral ceilings and skylights. Berber & ceramics throughout. Antiqued Maple cabinetry & centre island in kitchen. Almost finished lower level with walkout. Amazing lge windows. Loft/home office. 4 BR, 2 baths. Extensive decking. Far too many things to describe. Why not come and see this great home offered at \$357,900.

BLUE SPRINGS GOLF COURSE LOT

Great 1.4 acre vacant estate building lot overlooking Blue Springs Golf Course. This is one of the only two lots not built on in this exclusive development. Minimum 3000 sq. ft. home. Use your own plans and builder or listing agent works with three local custom home builders. Offered at \$214,900.



Erin: 90 ac farm (barn, pool, garage) ~ 25 ac of mixed bush with stand of



Picture perfect, REPRODUCTION!!! 4 bdrm, 3WR, "Early Canadiana" home o/l twin ponds, set far back from a quiet road on 90 rolling acres.

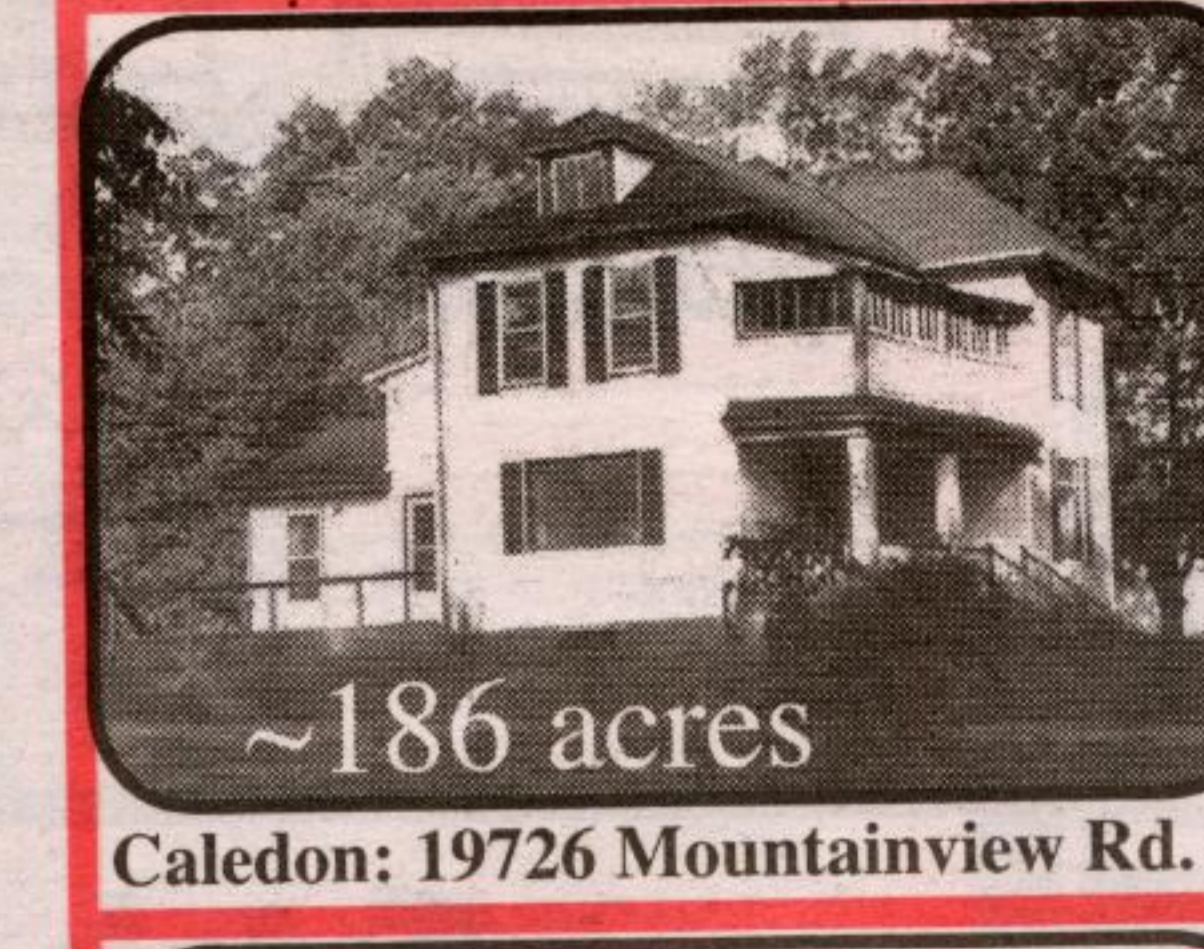
hardwood trees & ever flowing stream at the rear. Trails to a high ridge with panoramic views. Pine plank floors. New greenhouse kitchen o/l pool. Excellent well. Inground pool & cabana. Bank barn in excellent condition (recent floor & electrical) presently used for sheep. New 4 car garage. Near Ballinacree, less than 12 min to Georgetown GO

GEORGETOWN INDUSTRIAL SUB-LEASE

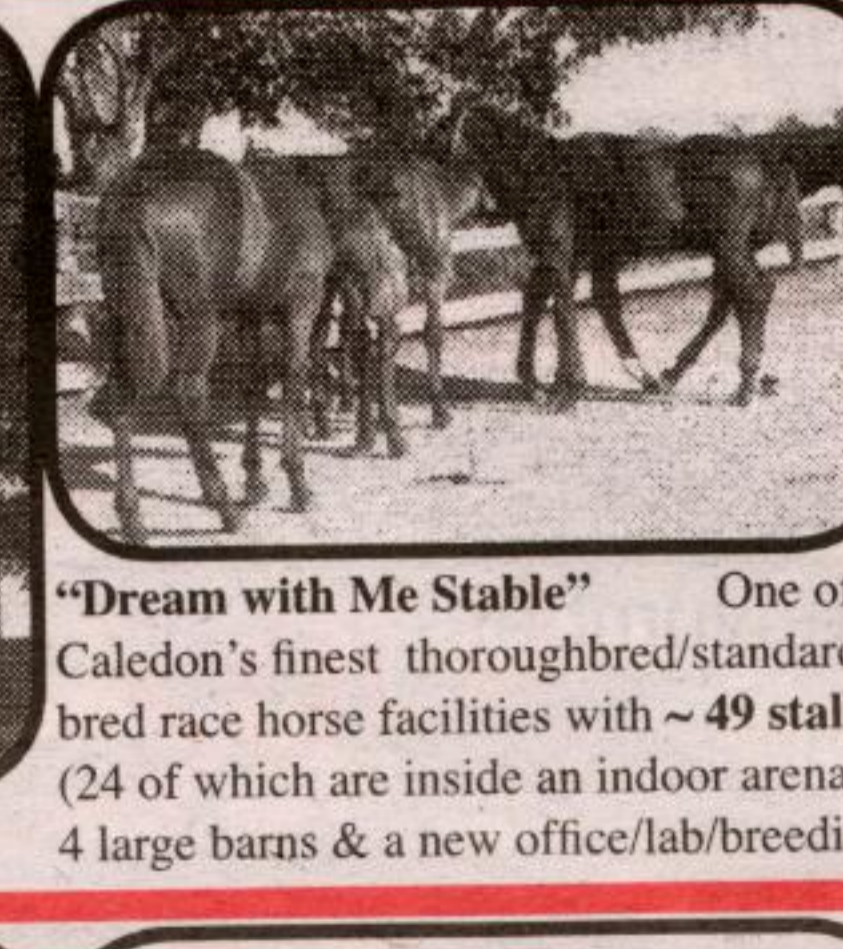
Approx. 20,000 sq. ft. 12 to 14 ft. clear, truck level loading, lots of natural light (windows), 1100 sq. ft. of renovated office. Dividable into 3500 sq. ft., 9000 sq. ft. and 7500 sq. ft. \$4.50 sq. ft. plus TMI. Available 30 days. Please call John Bartlett* to view.

EXCELLENT FAMILY HOME QUICK CLOSE

Four bedroom, 2-1/2 bathrooms, attached two car garage, main level family room, main level laundry, roomy eat-in kitchen, open concept living/dining room, large master with 4 pc ensuite and walk-in closet, three more spacious bedrooms and 4 pc main bathroom. Lovely bright home in pristine condition. Neutral colours, flows very well. Located in Fairy Lake area in Acton. Selling moving out of town, will close in 30 days. Offered at \$249,900.



Caledon: 19726 Mountainview Rd.



"Dream with Me Stable" One of Caledon's finest thoroughbred/standard bred race horse facilities with ~ 49 stalls (24 of which are inside an indoor arena), 4 large barns & a new office/lab/breeding

3 washrms. Lunch rm. 600 volts, 200 amps, 3 phase. Drilled well. Septic, 2002. Paved driveway & parking lot. Fully fenced. 2 gates. Security system. Heat sensors connected to cell & land phone. Vendor take back mortgage with 30% downpayment. Trafalgar Rd N, East on 17th SDRD, Erin, North side. Priced far below replacement cost. \$975K. Call Maureen.

RE/MAX It's The Experience!
 BLUE SPRINGS REALTY (Halton) CORP.
JOHN BARTLETT* ICI Representative
 RESIDENTIAL AND COMMERCIAL
(519) 853-2086 1-888-833-1945

Outside Storage

Erin: Industrial M1
 Erin: 2 superior Hi-Tech industrial facilities, (130' x 80' & 40' x 80'), a total of 14,400 sq ft (~800 sq ft office) on 1.37 acres, zoned M1 with outside storage. ~ 30 min to Hwy 401. Crane rails for 3 ton cranes. Heated

with infrared natural gas radiant heat. Reinforced concrete floors. R20 in walls, R30 in roof. Fans. Mercury vapor lights. 16+ ft clear. 7 drive-in doors, 1 pick-up door, 6 man doors.