

**Continued from pg. 21  
Sunday, Oct. 19**

**Memory Lane:** Historical walks of Georgetown or Acton will be held 12 to 4 p.m. Walk and learn about your community and at the same time raise funds for the United Way of Halton Hills and Halton Hills Community Support and Information. Guided tours available. Register and pick up pledge forms, 905-877-3066 (United Way) or 905-873-6502 (HHCSI).

**United Church worship:** There will be joyful music and celebration when all Georgetown area United churches worship together at Georgetown High School at 10 a.m. Canadian singer and hymn writer Linnea Good will lead in uplifting song. All welcome.

**Monday, Oct. 20**

**Halton Hills Toastmasters:** It's our 20th anniversary, 7:30-9:30 p.m. at St. Alban's Church, Glen Williams. Meet both new and

experienced Toastmasters who believe in themselves and the value of effective communications! Listen to an award winning Toastmaster. Space is limited so RSVP early. Call: Katherine Atkinson-Thomas, VP Public Relations, 905-565-4233.

**Sewing club:** Halton Sewing Association will meet 7:30 p.m. at St. Andrew's Church. Topic: rag quilting. Visitors welcome. Info: Hilda, 905-877-9708.

**Acoustic jam session:** Come out to the folk and traditional music jam session at the Shepherd's Crook Pub, 86 Main St., Georgetown, 8-10:30 p.m. Musicians can bring their acoustic instruments, singers their songs and we can jam to your favourite tunes. All musicians are welcome, beginners to experts— it's all just for fun. Info: Wendi or Hugh at 519-853-1383 or hhunter@stn.net

**Tuesday, Oct. 21**

**Beef dinner:** Limehouse

**COMMUNITY CALENDAR**

Memorial Hall holds a Beef Dinner, 5 p.m. and 6:30 p.m. sittings. Tickets, \$11 adults, \$6 children (age 6-12) and free (age five and under). For tickets call Glenda, 905-877-2101. Proceeds to the hall's roof fund.

**Euchre:** Georgetown Seniors Centre hosts euchre at 7 p.m. All are invited.

**Palette and Pencil:** Palette and Pencil Guild of the Credit Valley Artisans hosts Portrait Drawing for adults, 7:30-9 p.m. and Drawing and Painting, 1-4 p.m., every Tuesday in the Cedarvale Park Cottage. New members welcome. Info: Rita Ladjansky (p.m. session), 519-853-9226 or Marion Jonassen, 905-877-8217 (afternoon session).

**Mood Disorders self help:**

Halton branch of Canadian Mental Health Association presents Mood Disorders Education and Self-Help Group, a six-week program designed to provide information and support for people with depression or bi-polar disorder and their family members. It runs in Oakville, 7-9 p.m. The cost is \$30/individual or \$50/family. For more information or to register call the CMHA, 905-693-4270.

**Wednesday, Oct. 22**

**Interested in hiking?:** Meet Greg Vincent at Canoe Country in Norval, 7:30 p.m. as part of the Halton Hills chapter of the Bruce Trail Association meeting. Vincent will give a presentation on hiking gear. Learn about the right clothing, boots, packs etc. Refreshments will be served. Info: Maureen, 905-873-9757.

**Parent workshop:** Speaker Helen Noble, co-creator of HOMEQuarters, will host Hornby

Co-Operative Nursery School's first parent workshop of the school year, 7 p.m. at the school, 13526 Steeles Ave. at Trafalgar Rd., Hornby. The mother of three will share her secrets and insight into the monumental task of co-ordinating the lives of family members, and decluttering a busy household. RSVP: Kelly Haley, general director, 905-702-8775.

**Investment coffee club:** Edward Jones Coffee Club meets 10 a.m. at 211 Guelph St. Join in a weekly round table discussion about investments and current events. Info: 905-873-7630.

**Thursday, Oct. 23**

**Limehouse euchre:** Limehouse Women's Institute hosts euchre at the Limehouse Memorial Hall, 7:30 p.m. Lunch provided.

**Parkinson's Support:** The Parkinson's Support Group meets 7:30 p.m. at the Georgetown Seniors Centre.

**TOP 10 REASONS TO GET INTO A NISSAN**

- 10 STRIKING DESIGN
- 9 PROVEN QUALITY
- 8 FUN TO DRIVE
- 7 AWARD-WINNERS
- 6 GREAT SELECTION
- 5 SUPERIOR SAFETY
- 4 LEADING TECHNOLOGY
- 3 POWER
- 2 THRILLING PERFORMANCE

**1 GREAT VALUE**

2004 LIMITED EDITION ALTIMA 2.5 S EXTRA



**\$0 DOWN**  
ALSO AVAILABLE

INTRODUCING THE **NEW 2004 PATHFINDER LIMITED EDITION "CHINOOK"**

**ONLY AVAILABLE IN CANADA**  
**\$399** per month lease for 48 months with \$5,150 down or equivalent trade. INCLUDES DESTINATION AND DELIVERY.

• Award-Winning 240-HP 3.5-Litre DOHC V6 Engine • 4-Speed Automatic with Overdrive • "All-Mode" 4-Wheel Drive • Power Sliding Glass Sunroof (Auto Open/Close) • "All Terrain" 4-Wheel Anti-Lock Braking • 16" Alloy Wheels • 5,000 lb Towing Capacity • Fender Flares • Bose® Audio System with 6-Disc In-Dash CD Changer • 8-Way Adjustable Driver's Seat • Keyless Remote Entry System with Panic Alarm on Key Fob • Anti-Theft and Immobilizer Key System • "Chinook" Badging, Detailing and Numbered Plaque • Air Conditioning • Electronic Compass & Outside Temperature Display • Remote Rear Liftgate Glass Release • And Much More...



**\$0 DOWN**  
ALSO AVAILABLE

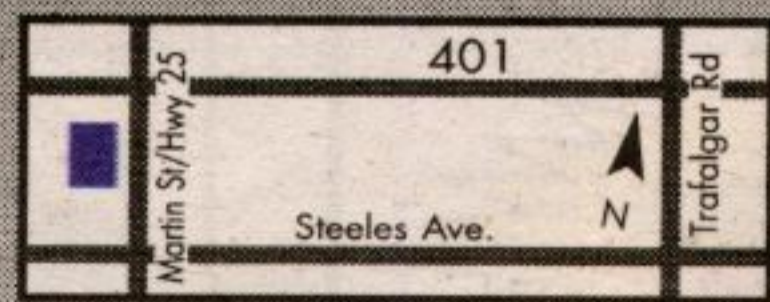
INTRODUCING THE **NEW 2004 QUEST**  
**\$389**

per month lease for 48 months with \$4,900 down or equivalent trade. INCLUDES DESTINATION AND DELIVERY.

• Award-Winning 240-HP 3.5-Litre DOHC V6 Engine • 7-Passenger Seating • Longest Wheelbase and Widest-Opening Dual Sliding Doors in its Class • 4-Speed Automatic Transmission • 4-Wheel ABS • Solar Tinted Glass • 8-Way Driver's Seat • Groundbreaking Fold-Away™ 2" and 3" Row Bench Seats • 10 Cup Holders • Side Curtain Airbags (all-rows) • 150-Watt CD with AM/FM Audio System • Plenty of Storage and Bag Hooks • Traction Control System • Heated Front Seats • Tire Pressure Monitor System • Trip Computer • Available DVD and Navigation System • Available SkyView™ Roof • And So Much More...

**2003 MODELS ARE GOING QUICKLY - HURRY IN FOR TERRIFIC DEALS!**

Milton's **NORTH END NISSAN LTD.**



**610 MARTIN STREET, MILTON**  
**905-878-4137**

SALES DEPT. HOURS: **Mon.-Thurs. 9:00 - 9:00**  
**Fri. 9:00 - 6:00**  
**Sat. 9:00 - 5:00**



All offers are only on accepted credit, available for a limited time, and may change without notice on new 2004 Altima S Extra (T4VG74 AE00), Sentra 1.8 VOP (C4LG54 BK00), Pathfinder "Chinook" (5CRG74 AE00), Quest 3.5 S (V6RG74 AA00) and Maxima SE (U4SG54 AA00). Offers cannot be combined with any other offers and include destination and delivery. \*48-month lease on all 2004 Altima S Extra/Sentra 1.8/Pathfinder "Chinook"/Quest 3.5 S/Maxima SE 6.7/2.1/4.9/6.5/6.5% ALR. Leases based on a maximum of 98,000 km with excess charged at \$0.10/km. Zero security deposit, OAC, on 2004 Sentra leases. Dealer may sell/lease for less. Not all vehicles are available at all Dealerships. Licence, insurance, and taxes are extra and must be paid at the time of transaction. \*\*\$1,000 in extra value reflects price difference between 2.5 S Convenience model versus 2.5 S Extra model. †2.8% purchase financing available for 36 months on 2004 Sentra. Financing examples: \$30,000 at 2.8% per annum for 36 months equals \$889.79 per month. COB is \$1,312.60 for an obligation total of \$31,312.60. ‡MSRP for model show \$49,100 (2004 Quest 3.5 SE (V6SG74 FN00)) †Based on comparison of 2004 Nissan Quest with 2003 FWD minivans. Vehicles not exactly as shown and used for illustration purposes only. Nissan, the Nissan Brand Symbol, "SHIFT"™ tagline and the Nissan model names are Nissan trademarks. See your Nissan Dealership or www.nissan.ca for more information.

**USED VEHICLES**

**2002 NISSAN PATHFINDER SE**

• V6 • 4x4 • 5 spd • Moonroof • Fully loaded incl. 6 disc changer

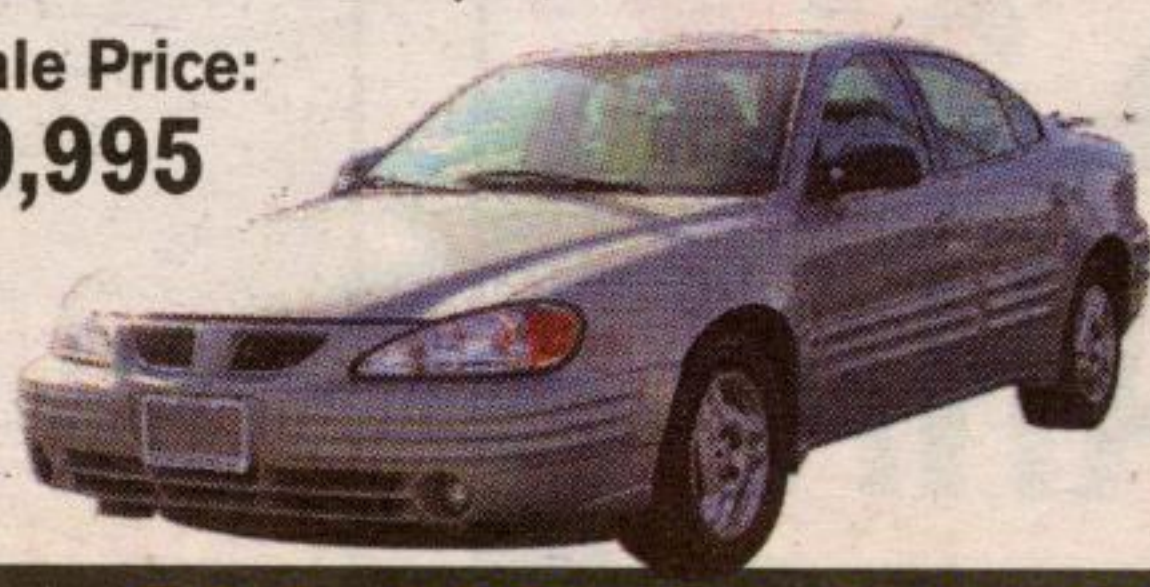
**Sale Price:**  
**\$29,990**



**1999 PONTIAC GRAND AM SE**

• V6 • Auto • Loaded • Only 93,000km

**Sale Price:**  
**\$9,995**



**1999 TOYOTA COROLLA**

• 4dr • Auto • Air • Stereo • Great reliability & economy

**Sale Price:**  
**\$11,380**



**1995 NISSAN QUEST**

• V6 • Auto • 7 passenger • Fully equipped • Mint condition

**Sale Price:**  
**\$8,990**



**ALL USED CARS INCLUDE WARRANTY**