



(905) 877-5165 (905) 874-3040



Johnson Associates

HALTON LTD., REALTOR

Check out my website: www.haltonhills.com/annalostritto
email: alostritto@trebnet.com

ANNA LOSTRITTO* Sales Rep.

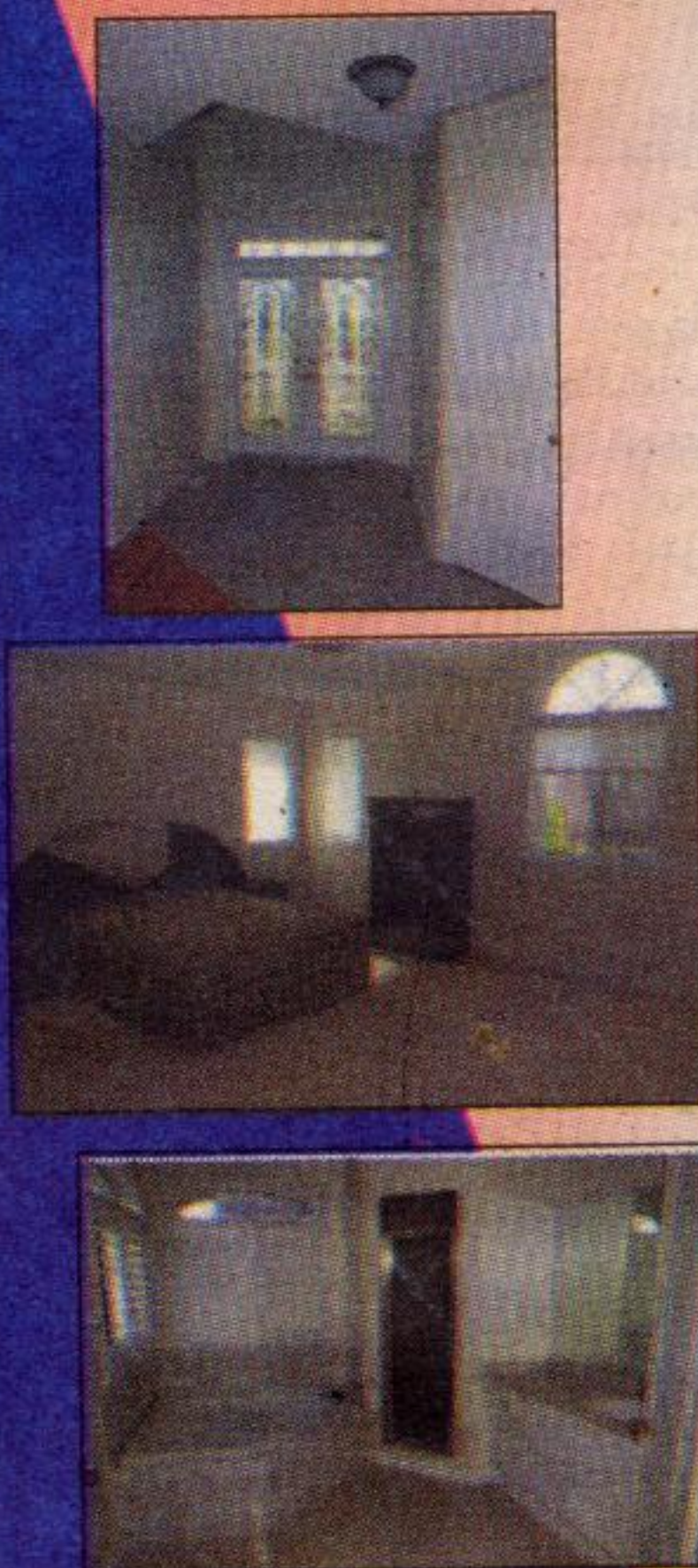
OPEN HOUSE SATURDAY, SEPT. 27 ~ 2-4 P.M.
143 Parkview Lane, Rockwood



FABULOUS!! EXECUTIVE MOSTLY STONE HOME WITH MAIN FLOOR GRANNY/NANNY SUITE!!!

Everything you wanted and more! Large kitchen with breakfast bar, wood floors, sliding walkout to patio, open concept with large 2-storey great room with palladium window, separate den and dining room. 2nd kitchen on main level. 4 Brs, 4 wrs, Huge Loft over self contained, main floor granny/nanny suite with separate entrance!!!! Come see for yourself!!! Super location in an area of newer executive homes! Hurry!!

03-515-91



SPACIOUS HOME!

Double door entrance, ceramic foyer, main level with wood floors and ceramic floor. Large kitchen open concept with huge family room w/3 sided fireplace, and with walkout to backyard. Living room and dining room combined. Main floor laundry, main floor den/library. Upper level with walkout to BEAUTIFUL large balcony! 4 Bedrooms, 3 Washrooms. Huge master with double door entrance, walk-in closet and beautiful ensuite with corner tub and separate shower. For more info, please call ME TODAY!

03-471-30



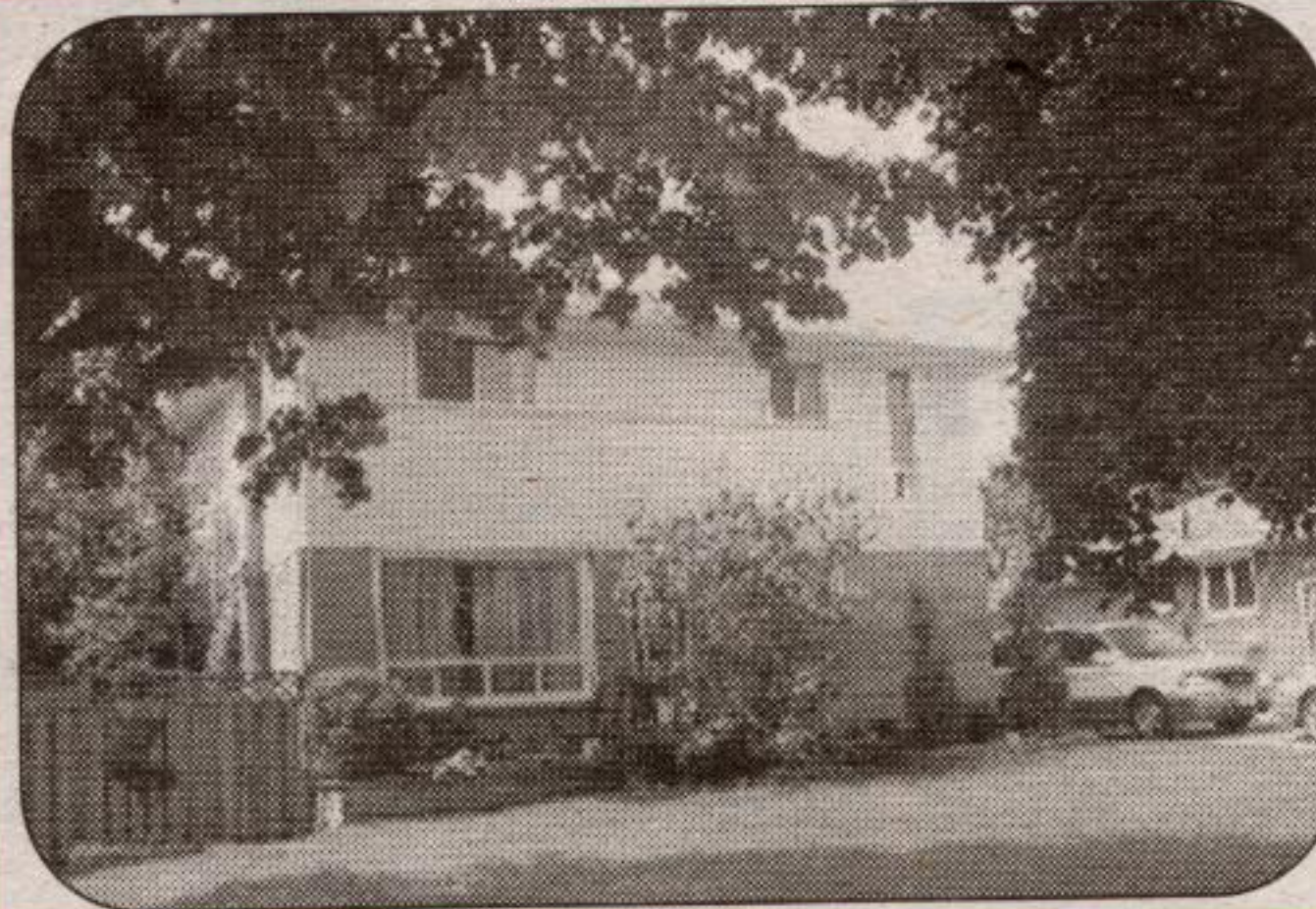
ELIZABETH DOELL*

Johnson Associates
HALTON LTD., REALTOR



E-mail: edoell@trebnet.com

(905) 877-5165
Local/Toronto



**FABULOUS PROPERTY
ONLY \$259,900!**

This is not a drive by. Features a gorgeous Barzotti kitchen, huge private treed backyard, hardwood floor, updated baths, 2 gas fireplaces +++. Call **Elizabeth Doell*** to view this great home.

03-516-30



**BUILD YOUR
DREAM HOME**

Lovely in-town building lot. Overlooks treed ravine. Lot size 40' x 150'. \$94,900. Call **Elizabeth Doell*** for more details.

03-527-VL



**STUNNING HOME IN
GLEN WILLIAMS! \$609,000**

Truly a lovely home this property has 5 bedrooms, walk-out basement, huge family room, 2 fireplaces, polished granite counters, marble floors and more. Over 3000 square feet with a huge walk-out basement and all this on an absolutely amazing treed ravine lot! Call **Elizabeth Doell*** for your appointment.

03-457-30

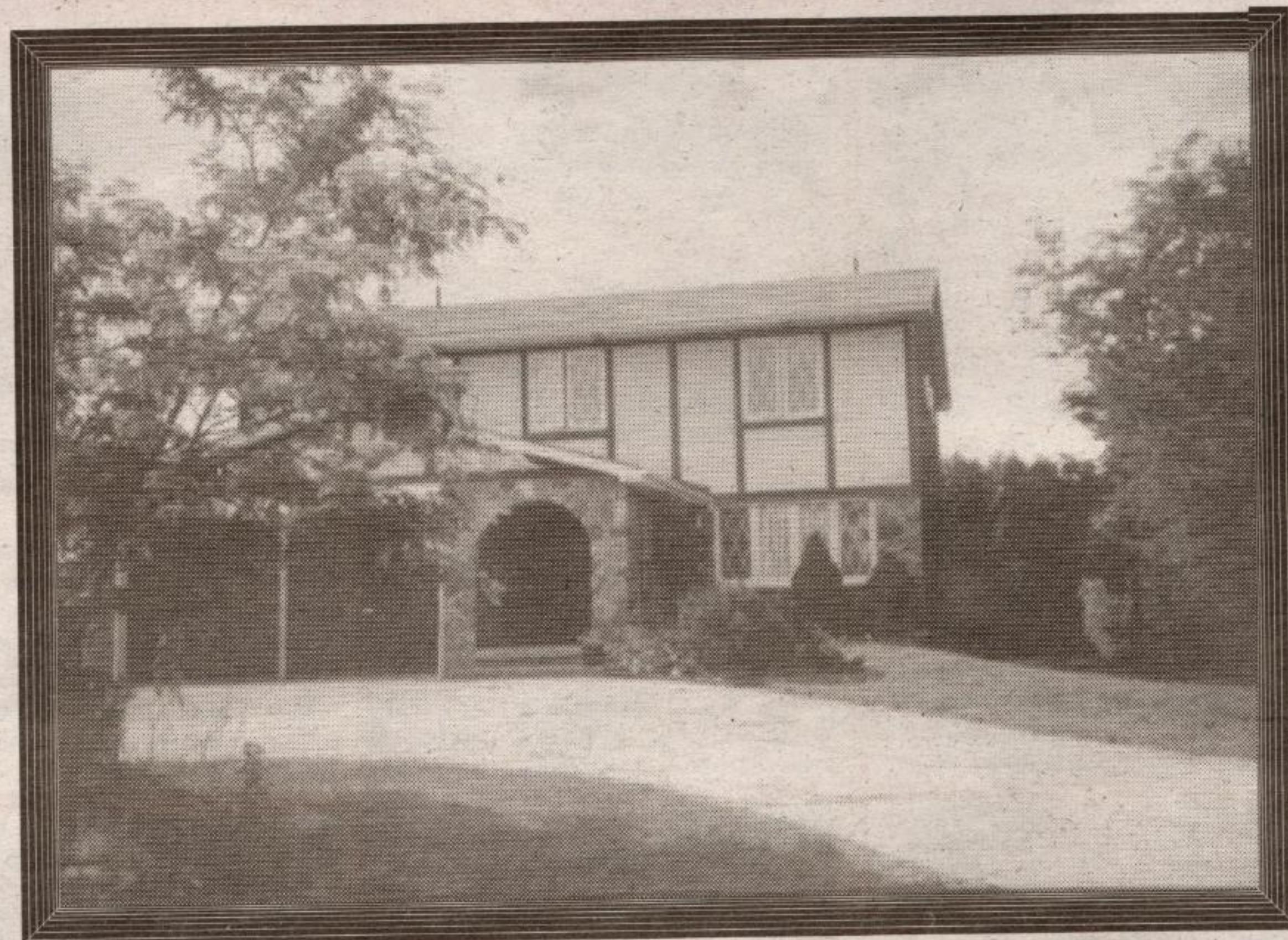
MARILYN WORRALL* Sales Rep.

519-853-2086

1-888-833-1945

RE/MAX

Blue Springs Realty
(Halton) Corp.



"COUNTRY RETREAT"

Large family home, situated on 3 1/2 scenic acres. Close to Acton, Guelph & 401. This 5 bedroom, 3 bathroom home is extremely spacious with lots of room for everyone to spread out. Custom built to the highest specifications. You won't be disappointed! I look forward to showing you this special property. Offered at \$399,000.