



LOCATION - LOCATION - LOCATION

Steps to GO train and GO bus services. Walk to high schools. Immaculate custom built brick home. Three bedrooms. Walkout from living room to full length deck. Walkout from recreation room to gorgeous backyard. Log burning fireplace in fully finished lower level. Three washrooms, central vac, water purification system, cold cellar. Loads of closets & storage space. Full two car garage, garage man door, upgraded stone driveway. Beautifully matured fully treed 50'x130' lot.

Immediate Possesion - A Must to See at \$279,900.



FRED HARRISON*

*Sales Rep.

(905) 873-6218 (905) 454-1100

Visit us at <http://www.fredharrison.net>

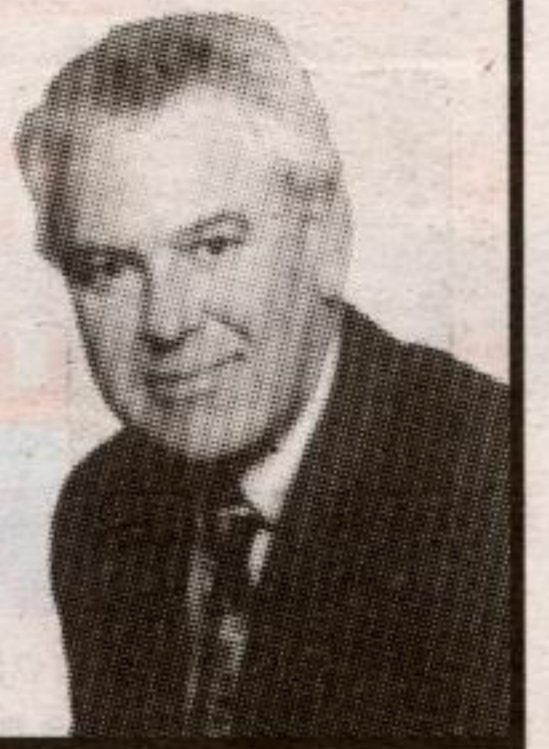


PROFESSIONAL REALTY INC.

Alan McPhedran, *Sales Rep.



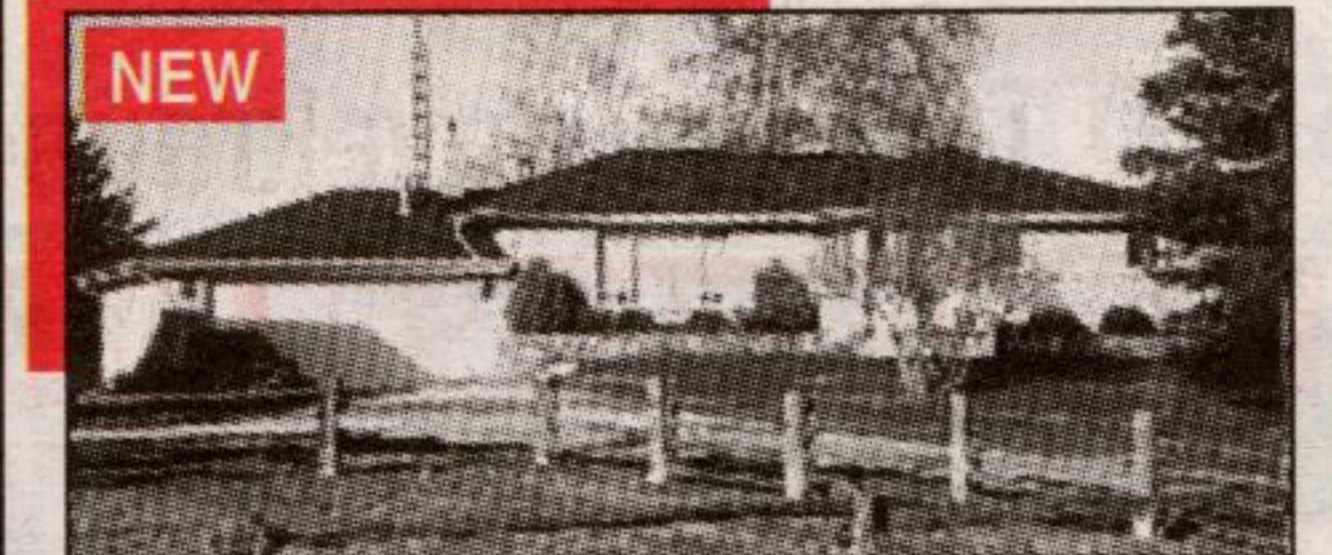
Blue Springs Realty (Halton) Corp. Rockwood



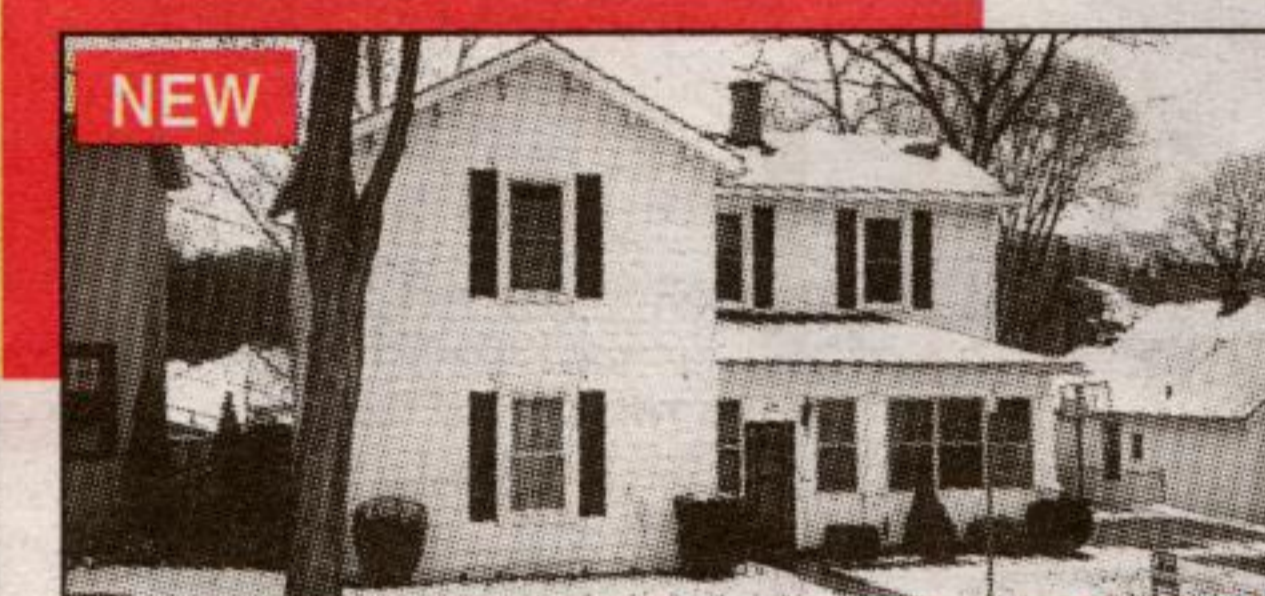
519-856-4348 Toll Free: 1-888-656-4348



COUNTRY BUNGALOW - WELLINGTON RD. 44
Excellent property in Rockwood. 2 bath bungalow with a recently renovated spacious (new) eat-in kitchen, main floor family room, private treed lot. Call Alan McPhedran* @ 888-656-4348.



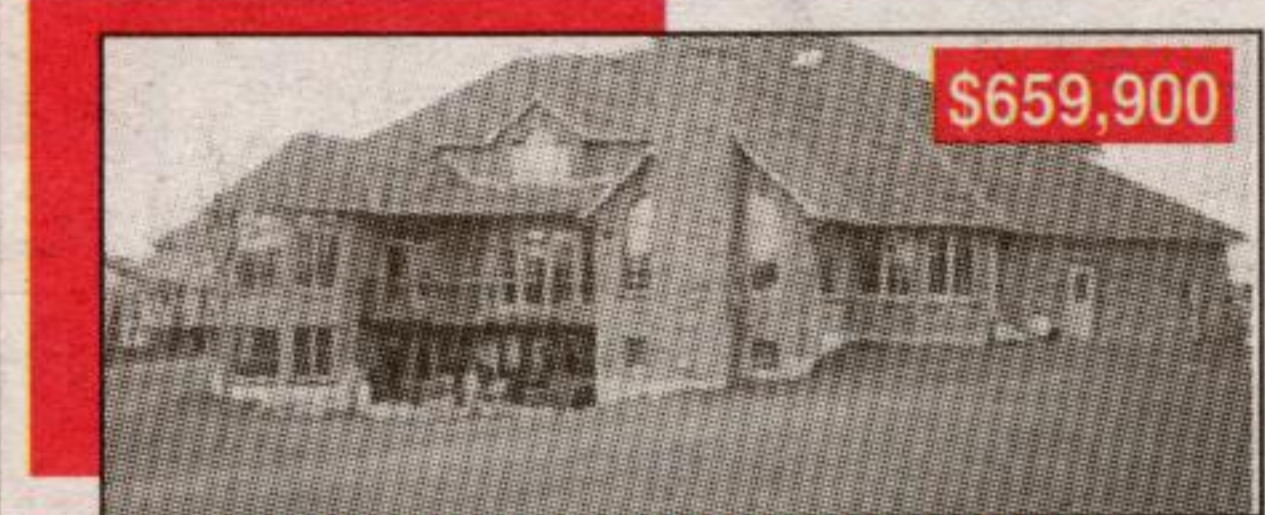
5191 1ST LINE - ERIN \$398,000
3 acres, this property has it all. 1600 sq. ft. renovated and updated bungalow, 32 x 40 heated/insulated shop with 2 large lift doors, 24 x 24 barn with 4 stalls, 2 paddocks, spring fed "bass" pond. Call Alan McPhedran*.



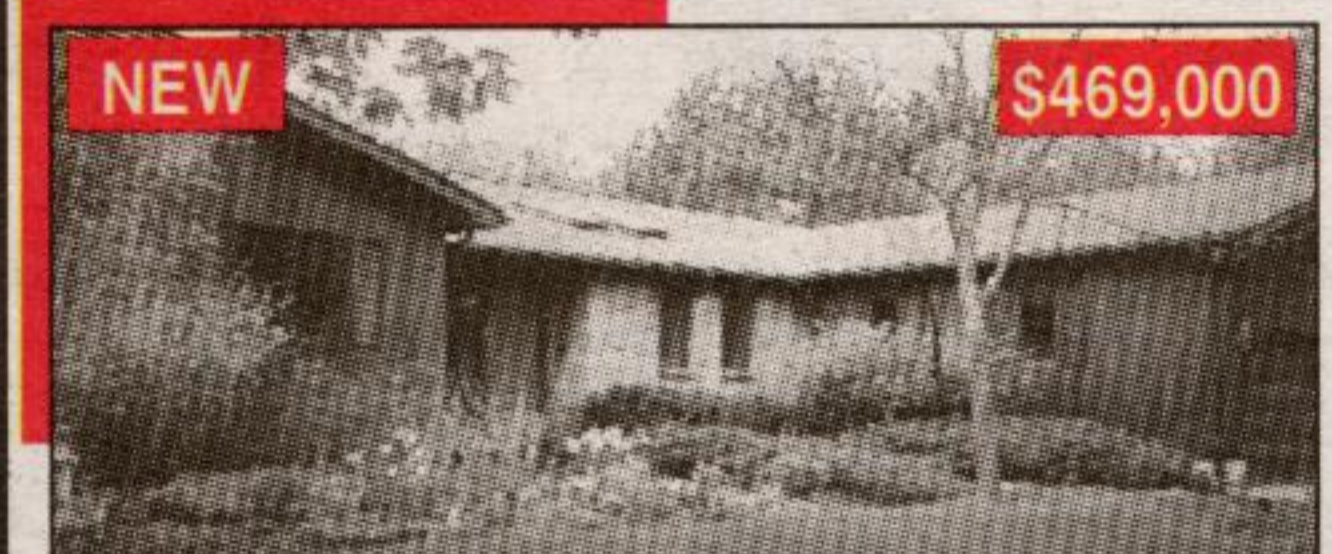
INVESTMENT OPPORTUNITY - GUELPH
2-3 bdrm units (1200+ sq. ft. each) and 1 bdrm in bsmt. Show well, excellent for family and income or as investment property. Call Alan McPhedran*.



127 PARKVIEW LANE, ROCKWOOD
Superb 5 bedroom family home, 2800+ sq. ft., hardwood/ceramic floors, main floor laundry, formal LR & DR, fenced yard, inground pool & hot tub. Bring the family. Call Alan McPhedran*.



BELWOOD ESTATE HOME
Over 7,000 sq. ft. finished, living space, private lake access & dock. An extraordinary home - unbelievable attention to detail and list of amenities. Call Alan McPhedran* at 1-888-656-4348.



10 ACRE ESTATE - 5878 - 6TH LINE - ROCKWOOD
Stunning 10 acre estate, 2248 sq. ft. 3 + 1 bedroom. Custom built bungalow w/1230 sq. ft. finished in basement w/full walkout. Indoor hot tub, 16 x 32 inground pool, very private & treed property. Country living at it's best. Call Alan McPhedran*.

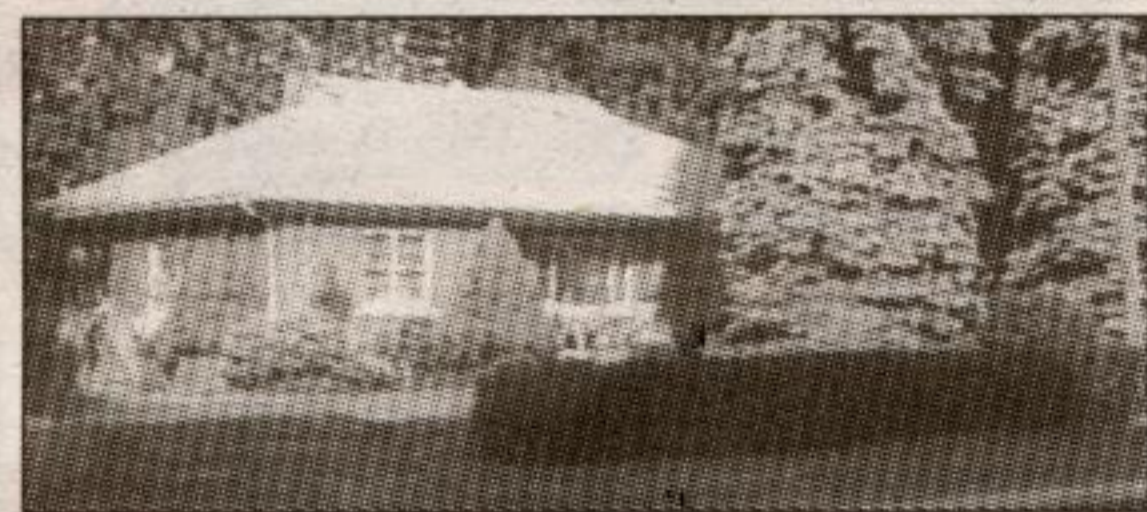
DAIRY OPERATION



State of the art Robotic milking (LELY) new in 2002 freestall on 182 acres just northeast of Guelph. Home has total renovation and farm can meet NMP.



\$72,900. Rockwood building lot with 120+ ft front, suits walkout basement, all services available.



Rockwood \$269,900
Lot potential 2 severances
1650 sq. ft. brick home with recent kit., heat and w. soft. 242' front



\$299,900



POOL TIME

Enjoy this summer in your own inground pool. 75' lot is bigger than most. 4 bedroom home with family room.



New \$174,900 Acton
Cozy 2 bdrm in ex. cond., oil heat, air cond., hardwood flrs and full bsmt. Lot potential for severance.

Orval S. Gates, Real Estate Broker

519-856-2526
1-877-288-8812

ESTATE LOT AND HOME IN TOWN



\$599,000

Country living with all the amenities. Approx. 1 acre with 3700+ sq. ft. Victorian beauty reproduction surrounded by wooded conservation lands. 4 bedrooms including finished loft, C/A, C/VAC, radiant heated hardwood & ceramic flooring. Oversize gourmet kitchen with oak cabinetry, built-ins, granite island, tile counters. Two fireplaces, formal living and dining room, main floor den, spacious family games room overlooking the pool and laundry. Multiple French doors walkouts to 19 x 33 kidney shaped heated pool with fibre-optic lighting, jacuzzi and wrought iron fencing. Landscape and decor is picture perfect - one of a kind!

PRETTY 10 ACRES WITH LARGE BUNGALOW AND SHOP



\$389,000

This spacious 3+2 bedroom, 3 1/2 bath Viceroy home is nicely situated on nearly 10 acres overlooking 2 ponds and mature trees. The newly finished basement is ideal for the extended family or in-laws and the oversized workshop (unfinished) plus double car, attached garage, will please the handyman. Just a ten minute drive to town.

FABULOUS 13 ACRE TREED LOT

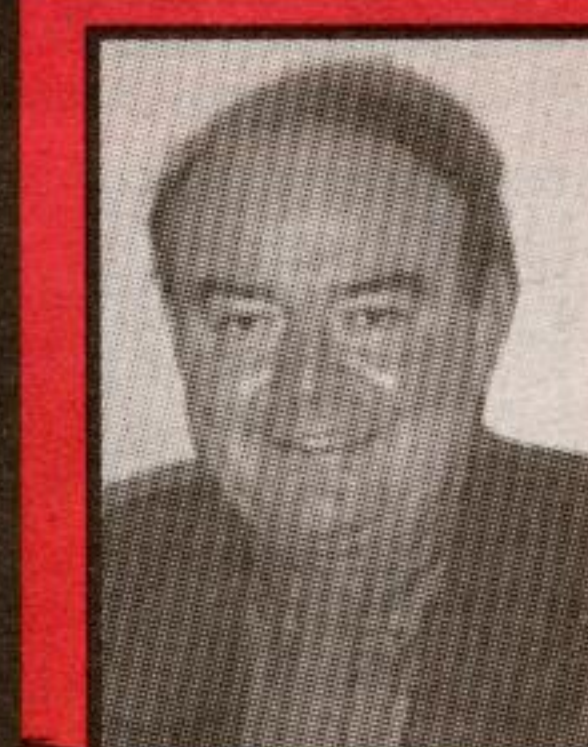


Backing onto Tributary of Credit River. Custom design/build 4000 sq. ft. + home. To be built using Builder's or Purchaser's plans. Price by quote based upon plans and requested landscaping package.

A VERY SPECIAL PLACE



Eramosa 47 rolling acres - 1200 ft. frontage - backs onto Speed River. Square log home, open concept, gorgeous - detached shop with loft. Long tree lined driveway.



BLUE SPRINGS REALTY (Halton) CORP.

JOHN BARTLETT* ICI Representative
RESIDENTIAL AND COMMERCIAL

(519) 853-2086 1-888-833-1945

