

# TOYOTA RED TAG DAYS

Hurry, it's almost over.



## Echo

LEASE FOR

**\$179**

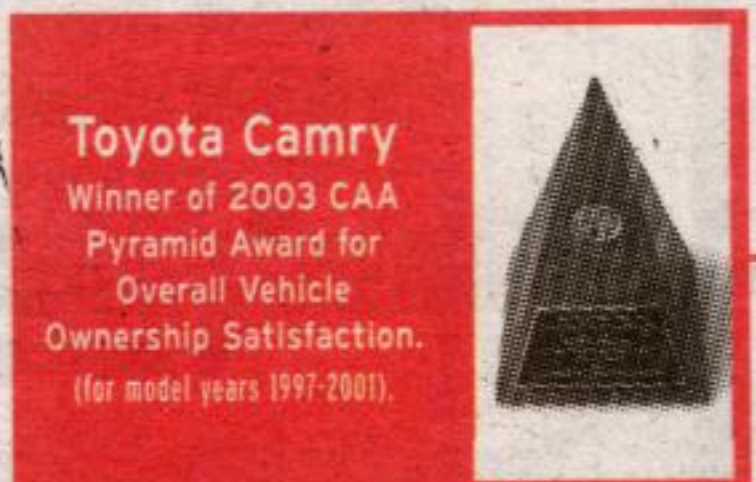
PER MONTH FOR 60 MONTHS WITH \$999 DOWN  
FREIGHT AND P.D.E. INCLUDED

**\$14,025 MSRP**

- 1.5 Litre, 4-cylinder, 108 hp, DOHC, 16-valve, VVT-i engine • AM/FM stereo CD with 4 speakers with digital clock in radio
- Power steering • 60/40 split rear seat • Reclining front bucket seats • Driver and front passenger air bag (SRS)
- Intermittent wipers with mist feature • Tilt steering • 5-speed manual transmission

Lease for an additional \$13.73 per month and get automatic transmission

• Fuel consumption: Hwy 5.1L/100 km (55 mpg) / City 6.6L/100 km (43 mpg)\*



## Camry SE

LEASE FOR

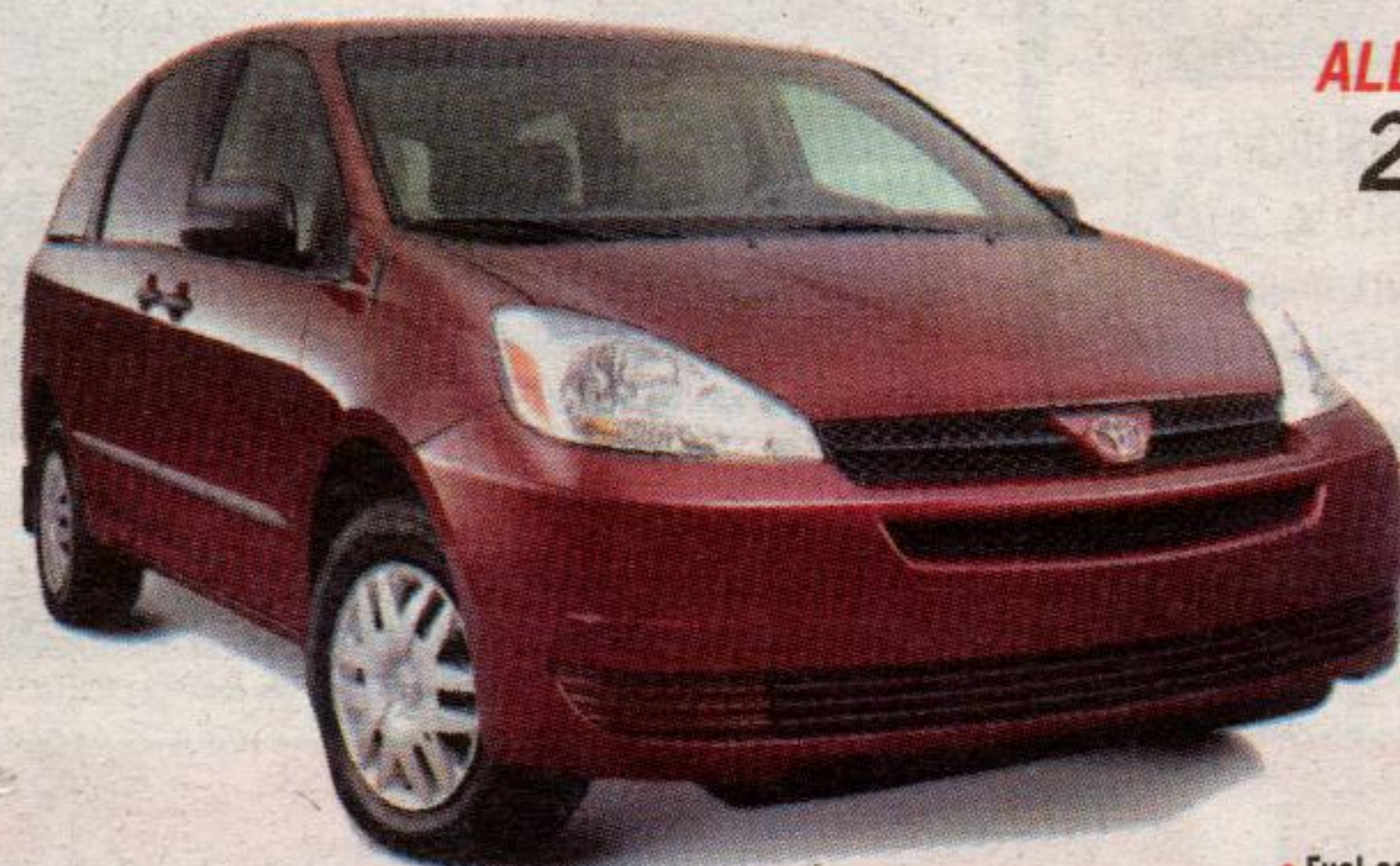
**\$299**

PER MONTH FOR 48 MONTHS WITH \$4,173 DOWN  
FREIGHT AND P.D.E. INCLUDED

**\$26,000 MSRP**

- 2.4 Litre, 4-cylinder, 157 hp, DOHC, 16-valve, VVT-i engine • 4-speed automatic transmission with overdrive • Air conditioning
- AM/FM CD cassette with 6 speakers • Power windows, locks and mirrors • Cruise control • Keyless entry
- 60/40 split rear seat • Leather wrapped steering wheel and shift knob • 16" aluminum alloy wheels
- Aluminum dash accents • Engine immobilizer • Tilt steering • Rear spoiler • Fog Lamps

• Fuel consumption: Hwy 6.9L/100 km (41 mpg) / City 10.2L/100 km (28 mpg)\*



## ALL NEW 2004 Sienna CE

LEASE FOR

**\$369**

PER MONTH FOR 48 MONTHS WITH \$4,668 DOWN  
FREIGHT AND P.D.E. INCLUDED

**\$30,000 MSRP**

- 3.3 Litre, V6, 230 hp, DOHC, 24-valve, VVT-i engine • 5-speed automatic transmission with overdrive • 7 Passenger seating
- Dual air conditioning • Dual sliding doors • 60/40 split and stow 3rd row seating • AM/FM CD cassette with 6 speakers
- Cruise control • Power windows, locks and power remote mirrors • Keyless entry with hatch release
- 4-wheel ABS • Engine immobilizer • Power remote heated mirrors / foldable exterior mirrors • Tilt steering

• Fuel consumption: Hwy 8.1L/100 km (35 mpg) / City 12.2L/100 km (23 mpg)\*

## RAV4

LEASE FOR

**\$299**

PER MONTH FOR 48 MONTHS WITH \$4,016 DOWN  
FREIGHT AND P.D.E. INCLUDED

**\$26,210 MSRP**

- 2.0 Litre, 4-cylinder, 148 hp, DOHC, 16-valve, VVT-i engine • Full-time 4WD • Air conditioning • Cruise control • Keyless entry
- AM/FM stereo CD with 4 speakers • Power windows, locks and mirrors • Tilt steering • 5-speed manual transmission

Lease for an additional \$16.55 per month and get automatic transmission

• Fuel consumption: Hwy 8.1L/100 km (35 mpg) / City 10.7L/100 km (26 mpg)\*



## Highlander

LEASE FOR

**\$369**

PER MONTH FOR 48 MONTHS WITH \$4,921 DOWN  
FREIGHT AND P.D.E. INCLUDED

**\$32,330 MSRP**

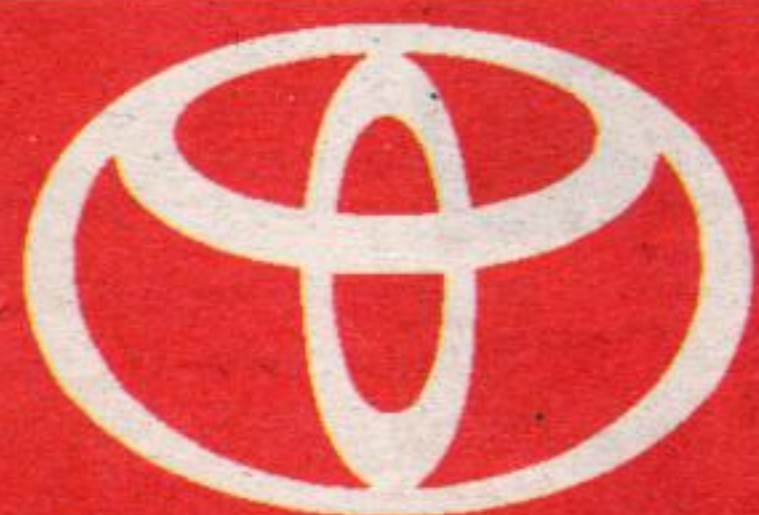
- 2.4 Litre, 4-cylinder, 155 hp, DOHC, 16-valve, VVT-i engine • 4-speed automatic transmission with overdrive
- 4-wheel ABS • Air conditioning • AM/FM CD cassette with 6 speakers • Cruise control • Keyless entry
- Power windows, locks and mirrors • Tilt steering • Front wheel drive

Lease for an additional \$11.23 per month and get Full-time 4WD

• Fuel consumption: Hwy 7.9L/100 km (36 mpg) / City 10.7L/100 km (26 mpg)\*



Leasing / financing plans from Toyota Credit Canada Inc. O.A.C. Offers valid on new 2003 Echo/Camry/Rav4/Highlander and 2004 Sienna models. License, registration, insurance and taxes extra. Lease includes freight and P.D.E. cost of \$960/\$1,110/\$1,260/\$1,260/\$1,260. Freight and P.D.E. not included in M.S.R.P. Based on 60 mos. walkaway lease at a rate of 4.9% on Echo (Model BT123MA or BT123PA). Based on 48 mos. walkaway lease rate of 5.5%/7.95%/4.5%/4.5% or 3.5% on Camry/Sienna/RAV4/Highlander (models BE38KPA/ZA30CPA/HH20VMB or HH20VPB/GD21APA or HD21APA). Down payment of \$999/\$4,173/\$4,668/\$4,016/\$4,921 or trade equivalent required. First payment due on delivery. Total lease obligation of \$11,739.68 or \$12,562.87/\$18,525.22/\$22,379.73/\$18,367.88 or \$19,162.57/\$22,633.47 or \$23,171.94 and purchase option price of \$5,610.00 or \$6,010.00/\$12,480.96/\$15,600.00/\$12,318.70 or \$12,882.70/\$14,871.80 or \$15,883.80 based on a maximum of 96,000 KMS (120,000 KMS for Echo). Additional KM charge of \$.07/.10/.10/.15 if applicable. M.S.R.P. of \$14,025 or \$15,025/\$26,000/\$30,000/\$26,210 or \$27,410/\$32,330 or \$34,530. Finance example: \$20,000 at 2.9%/3.9%/4.9% per annum equals \$580.74/\$589.59/\$598.52 per month for 36 months. C.O.B. is \$906.64/\$1,225.24/\$1,546.72 for a total obligation of \$20,906.64/\$21,225.24/\$21,546.72. \*EnerGuide 2002, published by Natural Resources Canada for vehicles equipped as described. Your actual fuel consumption may vary. \*\*3.9%/4.9%/2.9% no limit purchase financing for up to 36 months available on new 2003 Echo, Rav4/Camry/Highlander. These are limited time offers. Please see your participating Toyota Dealer for complete details. Dealer may sell for less. Offer ends June 2/03.



# GEORGETOWN TOYOTA

15 MOUNTAINVIEW RD. N., - GEORGETOWN 877-2296 Tor. 874-4276

WEBSITE at [www.georgetowntoyota.com](http://www.georgetowntoyota.com) or E-MAIL at [info@georgetowntoyota.com](mailto:info@georgetowntoyota.com)

