

Fire department offers tips on how to barbecue safely

With the arrival of barbecue season, Halton Hills Fire Protection and Prevention Services offers some tips on how to use a barbecue wisely and safely.

A spokesperson for the fire department said barbecues should be inspected and cleaned before being used for the first time each season.

- If the fittings, flex hose or burners are worn or rusted they should be replaced.
- A flexible brush or pipe cleaner

should be used to clean the tubes between the gas shut-off valves and the burners. Spiders or insect nests can cause obstructions.

- The cylinder connection should be checked before lighting the barbecue for the first time in the spring, or any time the cylinder is replaced. A mixture of 50 per cent liquid soap and 50 per cent water should be brushed onto



the connections. Signs of rising bubbles indicate there is a leak. Any leaks should be repaired before lighting the barbecue. Matches or lighters should never be used to check for leaks.

- Barbecues should only be used outdoors in an open, well-ventilated area, at least three metres (10 feet) away from windows or doors and anything that might obstruct the

flow of air around the grill.

- The barbecue should never be left unattended while cooking.
- Burner controls and the propane cylinder should be turned off when not in use.
- Make sure the barbecue has completely cooled before covering it after use.

For more information call 905-873-2601 and ask for fire safety specialist David Ford (ext. 2115) or Doug Andrews (ext. 2118).



The Community Care Access Centre (CCAC) of Halton is now accepting applications for admission to the **New Halton Healthcare Services Long-Term Care Facility**

The Community Care Access Centre has received notification that the new Halton Healthcare Services long-term care facility, being constructed beside Oakville Trafalgar Memorial Hospital (OTMH), is progressing in its plans to open in Fall 2003. The new Halton Healthcare Services long-term care facility is a partnership between Halton Healthcare Services and Extendicare. The facility will have 128 long-term care beds.

Anyone interested in applying for admission to the new Halton Healthcare Services long-term care facility or any other long-term care facility, should contact the CCAC of Halton for information regarding the application process for placement.

For further information, contact:
905-639-5228 or Toll Free by calling: 1-800-810-0000
and ask for Information and Referral

NISSAN'S GET INTO GEAR EVENT



2003 PATHFINDER
"Chilkoot Edition"



NEW LOWER PAYMENT

\$359 per month lease for 48 months with \$5,150 down.*

Includes destination and delivery.

or **1.8%** for 36 months.*

CHOOSE YOUR PAYMENT (48 MONTH LEASE)

\$0 DOWN \$475/MONTH
\$3,500 DOWN \$396/MONTH

*All Mode™ 4-Wheel-Drive (with Automatic Package) • Bose® Audio System with 6-disc CD changer and steering-wheel-mounted audio controls • Air Conditioning • Electronic Compass & Outside Temperature Display • and more...



2003 XTERRA
Xterra XE

\$338 per month lease for 48 months with \$4,600 down.*

Includes destination and delivery.

CHOOSE YOUR PAYMENT (48 MONTH LEASE)

\$0 DOWN \$445/MONTH
\$2,200 DOWN \$394/MONTH

*Power windows, mirrors, and door locks • Side step rails • Part-time 4-wheel drive system • Tubular roof rack with removable basket and wind deflector • Air Conditioning • and more...

IT'S ONLY A GREAT DEAL IF YOU GET A GREAT CAR.



THE NEW 2004 SENTRA

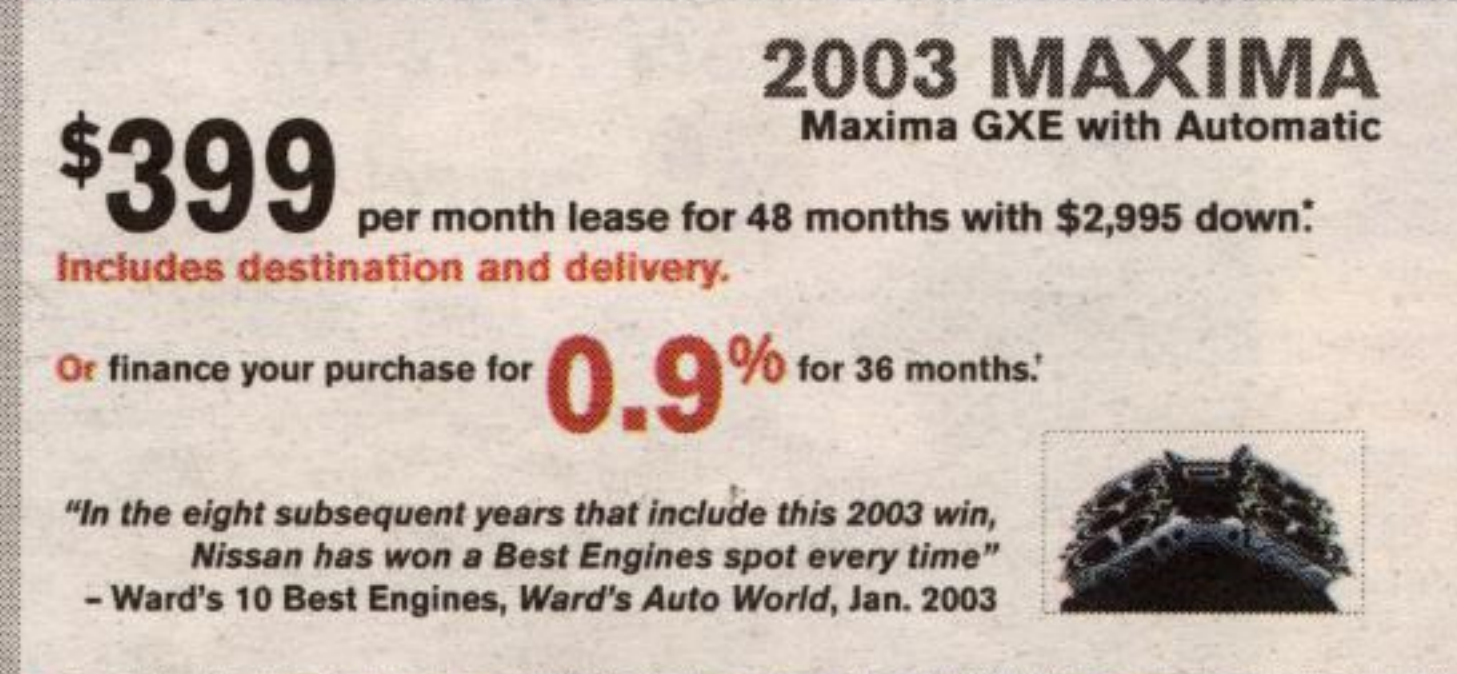
Choose Sentra 1.8, SE-R or SE-R Spec V

Starting at **\$15,598****

Great deals on remaining 2003s

Financing as low as **1.8%** for 48 months.*

*No payments for the first 90 days! Or \$0 security deposit (O.A.C.)



2003 MAXIMA
Maxima GXE with Automatic

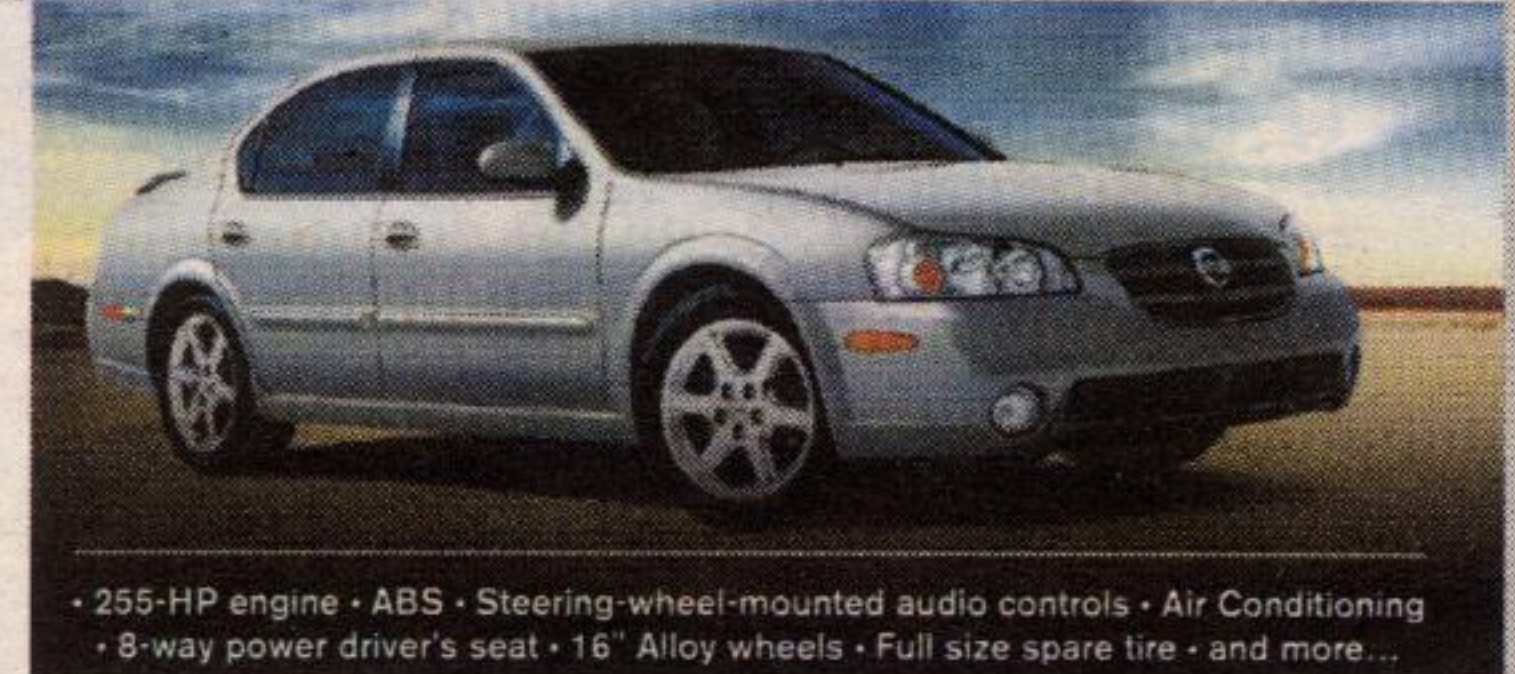
\$399 per month lease for 48 months with \$2,995 down.*

Includes destination and delivery.

Or finance your purchase for **0.9%** for 36 months.*

"In the eight subsequent years that include this 2003 win, Nissan has won a Best Engines spot every time"

- Ward's 10 Best Engines, Ward's Auto World, Jan. 2003

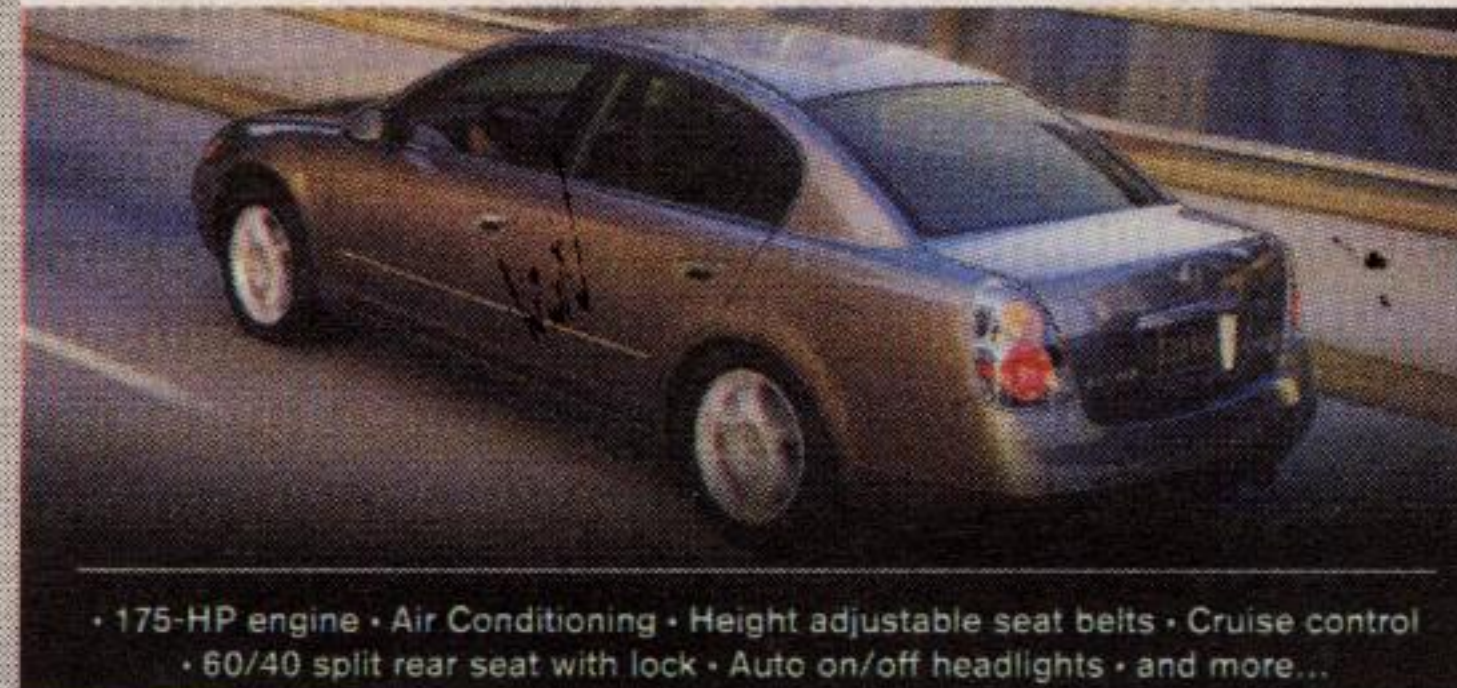


2003 ALTIMA
Altima 2.5S

\$299 per month lease for 48 months with \$3,160 down.*

Includes destination and delivery.

2002 CANADIAN CAR OF THE YEAR
2002 BEST NEW FAMILY CAR
2002 BEST NEW DESIGN



*175-HP engine • Air Conditioning • Height adjustable seat belts • Cruise control

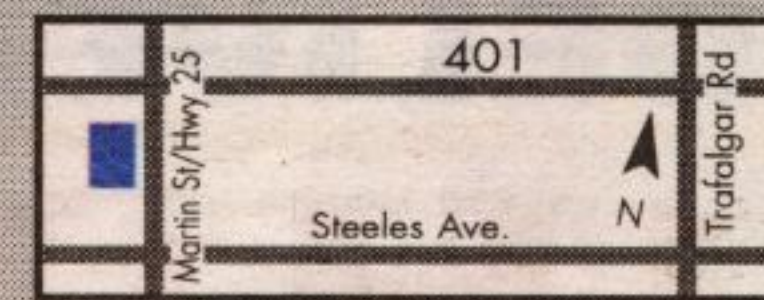
• 60/40 split rear seat with lock • Auto on/off headlights • and more...

Drive home an award-winning vehicle today.

HURRY IN, LIMITED TIME OFFERS

on all Nissan Sentra, Altima, Maxima, 350Z, Murano, Xterra, Pathfinder and Frontier.

Milton's
NORTH END NISSAN LTD.



610 MARTIN STREET, MILTON 905-878-4137

SALES DEPT. HOURS: Mon.-Thurs. 9:00 - 9:00
Fri. 9:00 - 6:00
Sat. 9:00 - 5:00



SHIFT

www.nissan.ca

CALLING ALL TEENS!

Would you like to see your story or opinion published?

Do you or your friends have an exciting, interesting or unusual job, hobby or talent?

Do you have an opinion that needs to be expressed?



Have you had an amazing, unique or devastating experience to share with other teens?

WE WANT TO HEAR FROM YOU!

The Independent & Free Press is looking for written submissions and story ideas from local teenagers for our new, upcoming special section just for teens. It will contain opinions, experiences, information and advertising geared to today's youth.

Deadline for submissions is Tuesday June 3, 2003

Submit your story at our office located at 280 Guelph St., Unit 29, (in the Georgetown Market Place) or email to sharrison@independentfreepress.com

The Independent & Free Press

All offers are only on approved credit, available for a limited time, and may change without notice on new 2003 Sentra SE 5-speed manual with Value Option Package (C4LGS3 BK00), 2003 Altima S (T4RG3A AE00), 2003 Maxima GXE Automatic (U4RG73 AA00), 2003 Pathfinder "Chilkoot Edition" Automatic (5CRG73 AE00), 2003 Xterra XE (RCLGS3 AA00). Offers cannot be combined with any other offers and except where otherwise noted include destination and delivery. Dealer may sell lease for less. Not all vehicles are available at all Dealerships. License, insurance, and taxes are extra and must be paid at the time of transaction. For 36 months finance Maxima/Pathfinder for 0.9% A.P.R. or finance Sentra SE and GXE for 48 months at 1.8%. Financing example: \$30,000 at 0.9% A.P.R. per annum for 36 months equals \$944.95-\$955.65 per month. COB is \$418.07/\$329.75 for an obligation total of \$30,418.07/\$30,329.75. \$30,000 at 1.8% per annum for 48 months equals \$432.16 per month. COB is \$743.63 for an obligation total of \$20,743.63. *First payment due 90 days after date of delivery on financed purchases on new 2003 Sentra. No interest for 90 days. *48-month lease on Sentra SE, Sport/Altima S/Maxima GXE/Pathfinder Chilkoot Edition/Xterra XE manual 2.5/2.5/2.5/2.5/2.5 A.L.R. Leases based on a maximum of 96,000 km with excess charged at \$0.10/km. If these vehicles are financed and the cash purchase prices are not taken, the effective interest rate for Sentra and Maxima is 5.1%. Vehicles not exactly as shown and used for illustration purposes. Nissan, the Nissan Brand Symbol, "SHIFT," "tegrity," and Nissan model names are Nissan trademarks. See your nearest Nissan Dealership or www.nissan.ca for more information.