

Real Estate Digest

Wednesday, May 7, 2003

12 Pages

Bill McKeown

Associate Broker

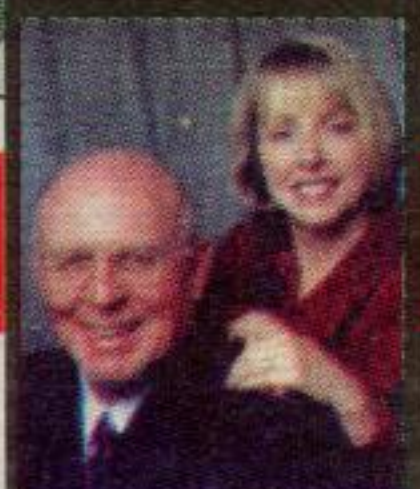
877-5211

RE/MAX BLUE SPRINGS REALTY (Halton) CORP.



NEW!

\$409,900



LYNN & JOHN DREWRY*

*Sales Reps.
(905)

877-5165

PEACEFUL WOODED RAVINE SETTING!!!

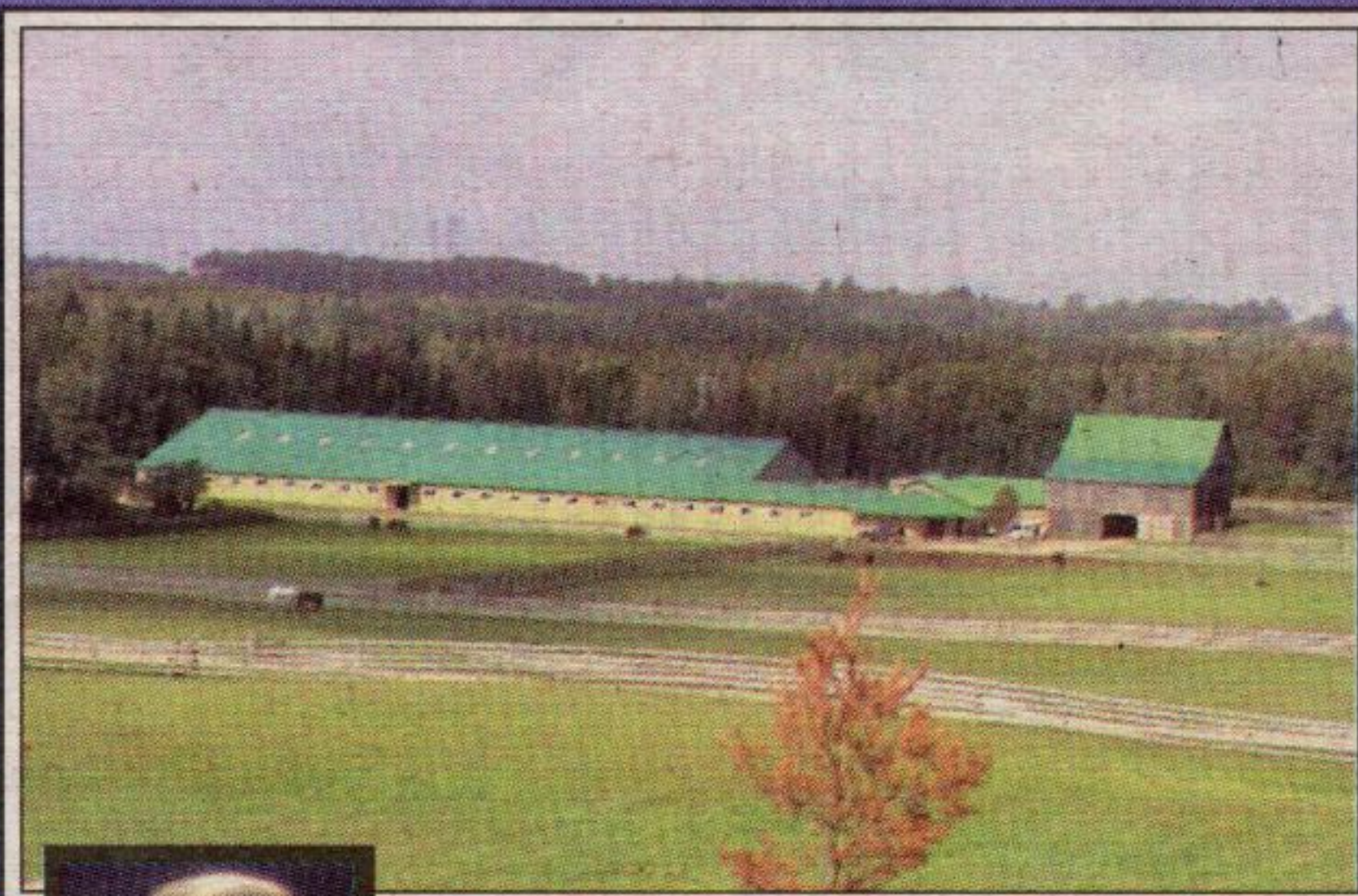
- Location! 1 of Prestige streets in Geo Sth!
- 2704 s.f., 4 Bedrooms + Main floor Den!
- 3.1vl Deck w/Hot Tub, Prof. Landscaped!
- New Hardwood + Ceramics & Broadloom!
- Upgraded Fam rm w/custom Marble F/P!
- Oak Kit, sep formal Dining & Living rm!
- All appliances included + w/s & Satellites!
- Part. fin. Basement w/Pool rm or 5th bdrm!



Johnson Associates
HALTON LTD., REALTOR



www.lynnandjohndrewry.ca



STATE-OF-THE-ART EQUESTRIAN/TRAINING FACILITY

Situated on over 49 acres, Turn for Home Farms boasts 45 stalls, 3 separate barns, large indoor arena with Equi-Ciser 80x208, wash stalls, heated tack room, hayloft, staff apartment, 8 paddocks, large 3-bay garage/driveshed.

Visit www.royallepage.ca/id/1004502 for more photos.

ROYAL LEPAGE CREDIT VALLEY REAL ESTATE INC.

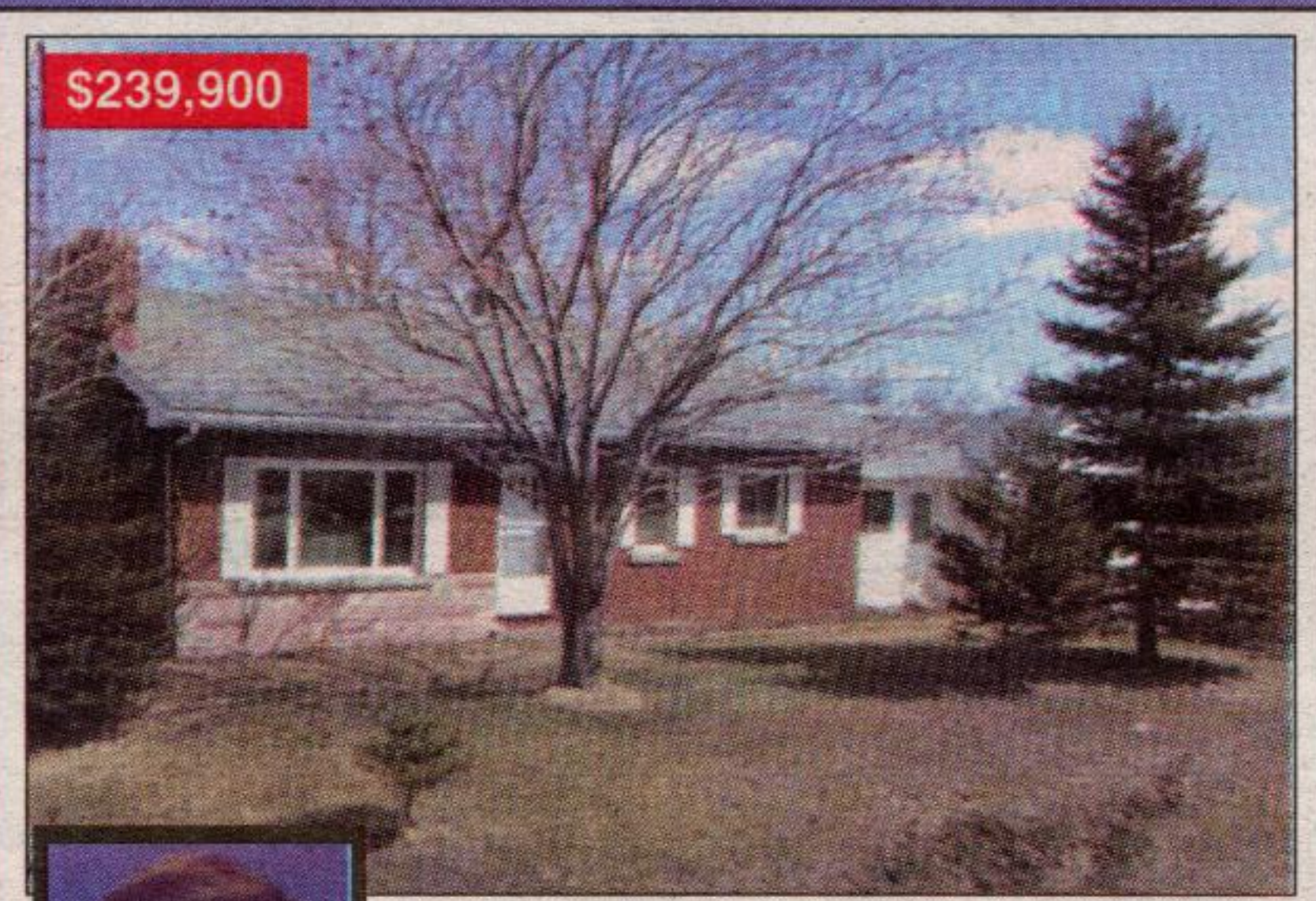
Independently owned & operated



VICTORIA RONALD-PHILLIPS*

*Sales Rep.
(905)

793-5000



\$239,900



MIKE ADAMS*

*Sales Rep.
(905)

877-5211

EDGE OF TOWN - COUNTRY

Detached bungalow features L-shaped LR & DR. Roomy 1.5 car garage. Open concept; 2 walkouts to deck, one from DR and the other from master bedroom. Main floor family room. Tastefully decorated. Nice size lot next to apple orchard. View of pond. Just right for nature lovers. Fruit trees and mature trees. Call Mike* today.

RE/MAX BLUE SPRINGS REALTY (Halton) CORP.



NEW



JANET McKEOWN*

*Sales Rep.
(905)

877-5211

CHARM OF YESTERYEAR

Own your own piece of history - 1860's 2 storey 3 BR log home, originally from Ottawa Valley - dismantled and put back together piece by piece along with a 400 sq. ft. Fam. Rm addition and set amongst rolling hills o/12 ponds & mixed bush on a beautiful 12 acre lot with sep. 2 car garage. Features incl. Wooden Floors, updated windows, CVAC, MBR with 3 pc. Ens.; unfin high basement with 2 pc. WR. Formal LR with FP; sep. DR, central foyer. Approx 2100 sq. ft. Fabulous retreat! \$474,900.

RE/MAX BLUE SPRINGS REALTY (Halton) CORP.

OPEN HOUSE - Sunday May 11, 3-5 pm
55 Donaghedy Dr., Georgetown

NEW PRICE

50 FOOT LOT



More photos & directions -> <http://maureen.ca>



MAUREEN PLUCINSKY*

*Sales Rep.
(905)

877-5211

1-800-834-5516

GEORGETOWN S: NEAR BARBER DRIVE PARK

Beautiful 3,052 sq. ft. Fernbrook home on a most desirable street. Stunning foyer with patterned marble flr through DR. Kit with ceramic floor & backsplash, centre island & large eating area with w/o to huge deck with built-in seats. Fam rm with FP & picture windows. MBR w 2 w/i closets & 5 pc ensuite w sep. shower. CAC, CVAC & security. Brick path to fenced rear yard w waterfall & fish pond. This home is 1 street away from Barber Drive Park on the quiet side of the park. Asking \$409,000.

More photos and directions at: <http://maureen.ca>
RE/MAX BLUE SPRINGS REALTY (Halton) CORP.



1 \$250,000

2 \$359,000

3 \$209,000

4 \$294,900



MARTHA SUMMERS*

*Sales Rep.
(905)

877-5165

(Local/Toronto)

JUST A FEW OF OUR NEW LISTINGS! WE HAVE MORE, PLEASE CALL

1. Once a Village Store + Home, Huge Lot-Charming
2. Pretty 1 acre lot, Immaculate, 3+ bedroom home - Halton.
3. Super Starter, huge fenced yard, hardwood floors
4. Your Own Park in the backyard - Log home - Georgetown

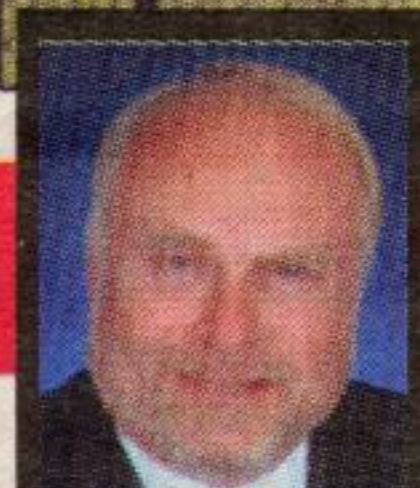


Johnson Associates
HALTON LTD., REALTOR



www.marthasummers.ca

email: msummers@idirect.com



DAVE KRAUSE*

*Sales Rep.
(905)

877-5211

COUNTRY LIVING SOUTH OF GEORGETOWN

This spacious architecturally designed home is on a beautiful landscaped private acre south of Georgetown. Features include: a sunken DR & large LR with cathedral ceilings & w/o to a patio to a 16 x 32 inground pool & hot tub areas. The country kitchen is large & bright. The master bedroom has a three piece ensuite & w/i closet. The basement is finished with a 5th bedroom, rec room with a wet bar & lots of area for games room. The garage has been converted to an in-law suite with its own laundry etc. Priced at \$364,900. Call Dave Krause* to view.

RE/MAX BLUE SPRINGS REALTY (Halton) CORP.



\$299,000



ANNA LOSTRITTO*

*Sales Rep.
(905)

877-5165

(Local/Toronto)

SUPER COUNTRY BUNGALOW!!!

WOW! Approx. 2 acre lot! Open concept home with large LR/DR with gleaming wood floors, and walkout to backyard. Modern kitchen with skylight and lots of cupboards. 3 bedrooms, Mbr with 4 pce. ensuite and walk-in closet. 2nd BR with walkout to verandah, overlooking pond. Large main floor laundry with entrance to double garage to backyard, and to huge front wrap-around verandah! Great location, close to walking trails and much more!!! Call me quick!



Johnson Associates
HALTON LTD., REALTOR

alostritto@trebnet.com
www.haltonhills.com/annalostritto



NEW PRICE

\$349,900



JESSIE JACOBS*

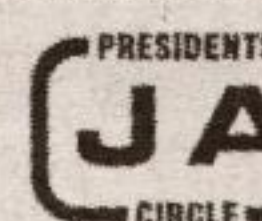
*Sales Rep.
(905)

877-5165

(Local/Toronto)

"PARK AREA OF GEORGETOWN"

• 6 bedrooms up plus 2 down • Recent Pergo flooring in living/dining rooms, family room and den • Large kitchen with oak cabinetry and pantry • Light filled breakfast room with walkout to family sized deck • Family room is large and has a cozy woodburning fireplace • Central air, central vac • French doors, skylight • Double car garage • No sidewalk ... parking for 6 cars • Fabulous park location ... walk to fairgrounds/park, schools, churches, library and cultural centre, and shopping along with old main street • Seconds from North Halton Golf and Country Club for the golfers in the family • 2 bedroom in-law suite in the basement • Motivated vendors have reduced price from \$369,900 to \$349,900.



Johnson Associates
HALTON LTD., REALTOR