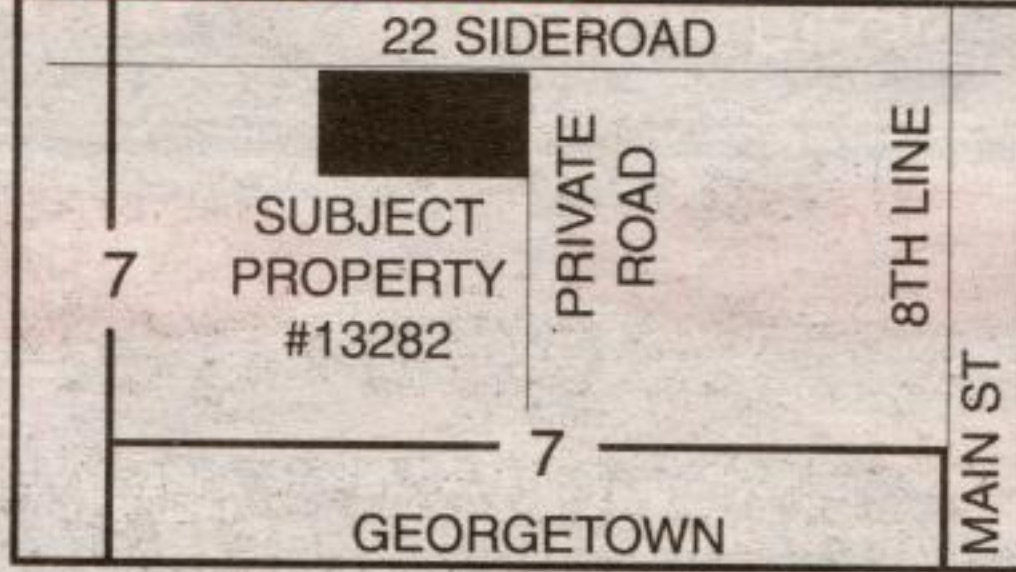


**ERIN HILLSBURGH ROCKWOOD CALEDON**



**Three Bedroom Country Bungalow on 1/2 Acre**  
Basement walkout to double car garage. Minutes north of Georgetown. Call **Tony\*** or **Carol\*\*** for more details and viewing.  
**\$299,000.**

**A LOT TO LOVE! OFFERED AT \$329,000**



Situated in an area of fine homes is an 8+ acre parcel of land that is the perfect site to build your castle. This scenic property is home to a large variety of beautiful, mature oak & hardwood trees and is located close to Hwy. 7, 401 and the Georgetown GO. Presently zoned to allow 1 residence but there is potential for future development. Call **Carol\*\*** or **Tony\***.



**Stunning "Upper Canada"**  
Post and beam home on 11+ acres just north of Glen Williams. Private executive retreat. Priced at \$749,000. Call **Tony\*** or **Carol\*\*** for viewing.

**"THOUGHT OF THE DAY"**  
Being considerate ... with people's feelings isn't a sign of weakness on your part, but maturity!



**CAROL & TONY WALRAVEN**  
\*\* Associate Broker \*Sales Representatives

**RE/MAX** www.walraventeam.com  
Blue Springs Realty (Halton) **905-877-5211**



**MISSISSAUGA ERIN HILLSBURGH ROCKWOOD**

**RE/MAX Blue Springs Realty (Halton)**



**DOUG MEAL\***

\*Sales Rep.

**RE/MAX**  
Blue Springs Realty (Halton) Corp.  
**877-5211**



**GEORGETOWN INDUSTRIAL AREA**  
1100 plus square feet located on Armstrong Avenue. Office space only. \$3.00 per sq. ft. + TMI & utilities. Call **Doug\*** for details.



**LOTS OF ROOM**  
3 bedrooms - 3 bathrooms - walkout to private deck - fireplace in living room. Kids own play room & more. \$151,900. Call **Doug\*** for more details.



**45 ACRES**  
3 bedroom Cape Cod with family room - 5 minutes north of Hwy. 7 - Great for those who want wide open spaces or room for the horses. Asking \$429,000. Call **Doug\***.

**DOUG MEAL\*, Sales Rep. 877-5211**

**MIKE ADAMS\***

\*Sales Rep.

**RE/MAX**

BLUE SPRINGS REALTY (HALTON) CORP.

**905-877-5211**



**\$259,000**

**OLD CHARM AND ELEGANCE**

This is it! Pretty as a picture. Gracious 3 bdrm victorian - porch with gingerbread trim. Absolutely charming. Located in Park district of Georgetown. Walk to downtown, shopping, park, schools. Check out the backyard - great gardens & very private. Hardwood floor. Huge family room with gas FP, walkout to oversized deck. Home has been totally renovated with attention to style and detail. Call **Mike\*** today.



**\$239,000**

**EDGE OF TOWN, 10 MIN TO GEORGETOWN**

Wow, great home with large addition. Huge master bedroom with walkout to private deck, large living room with stone fireplace, dining room, living room, finished basement. Parking. Extra large garage. Call **Mike\*** today.



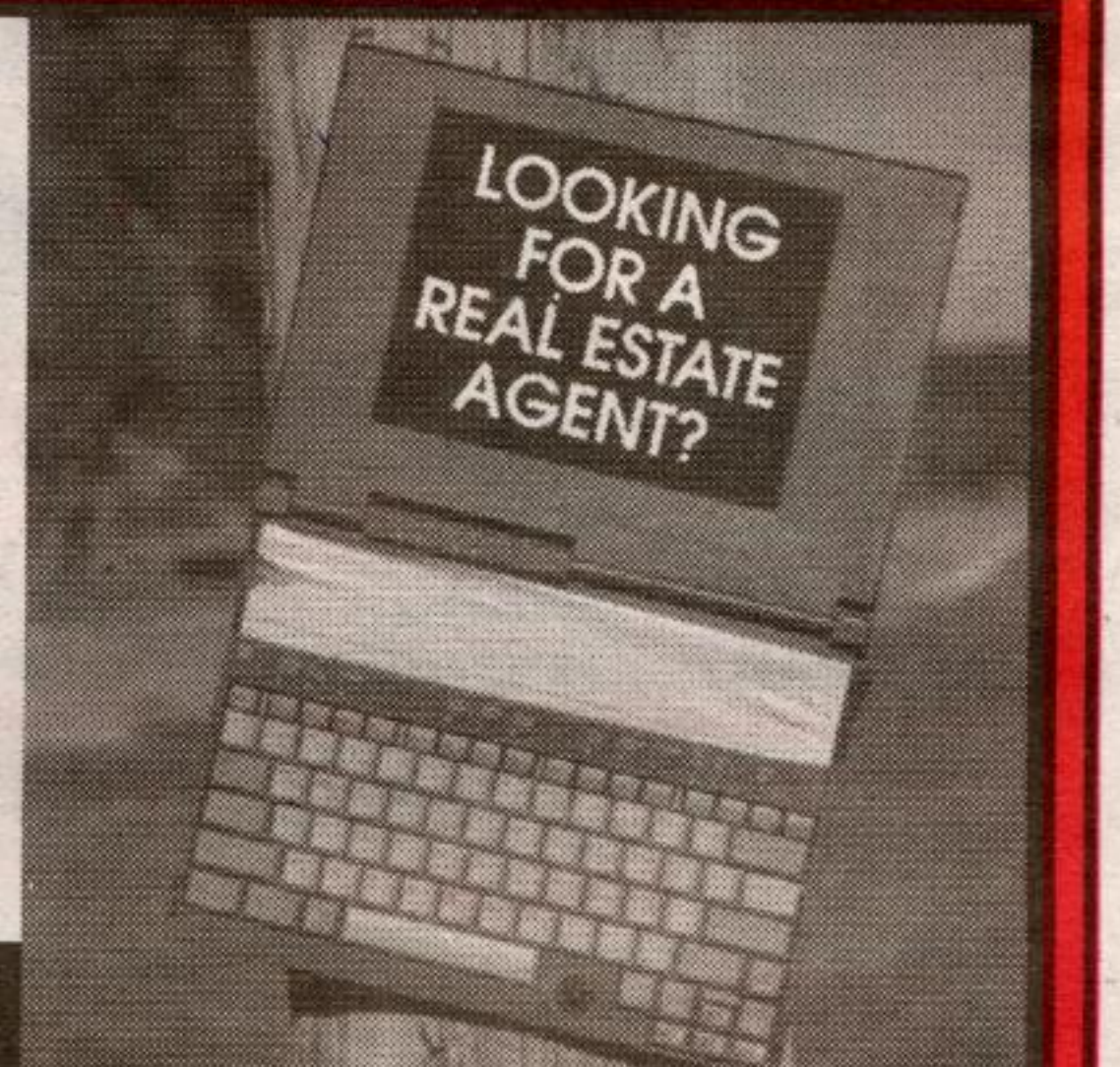
*I have many buyers looking. Call me today for a FREE Market Evaluation.*

**JODIE MCGUCKEN, Sales Rep.**

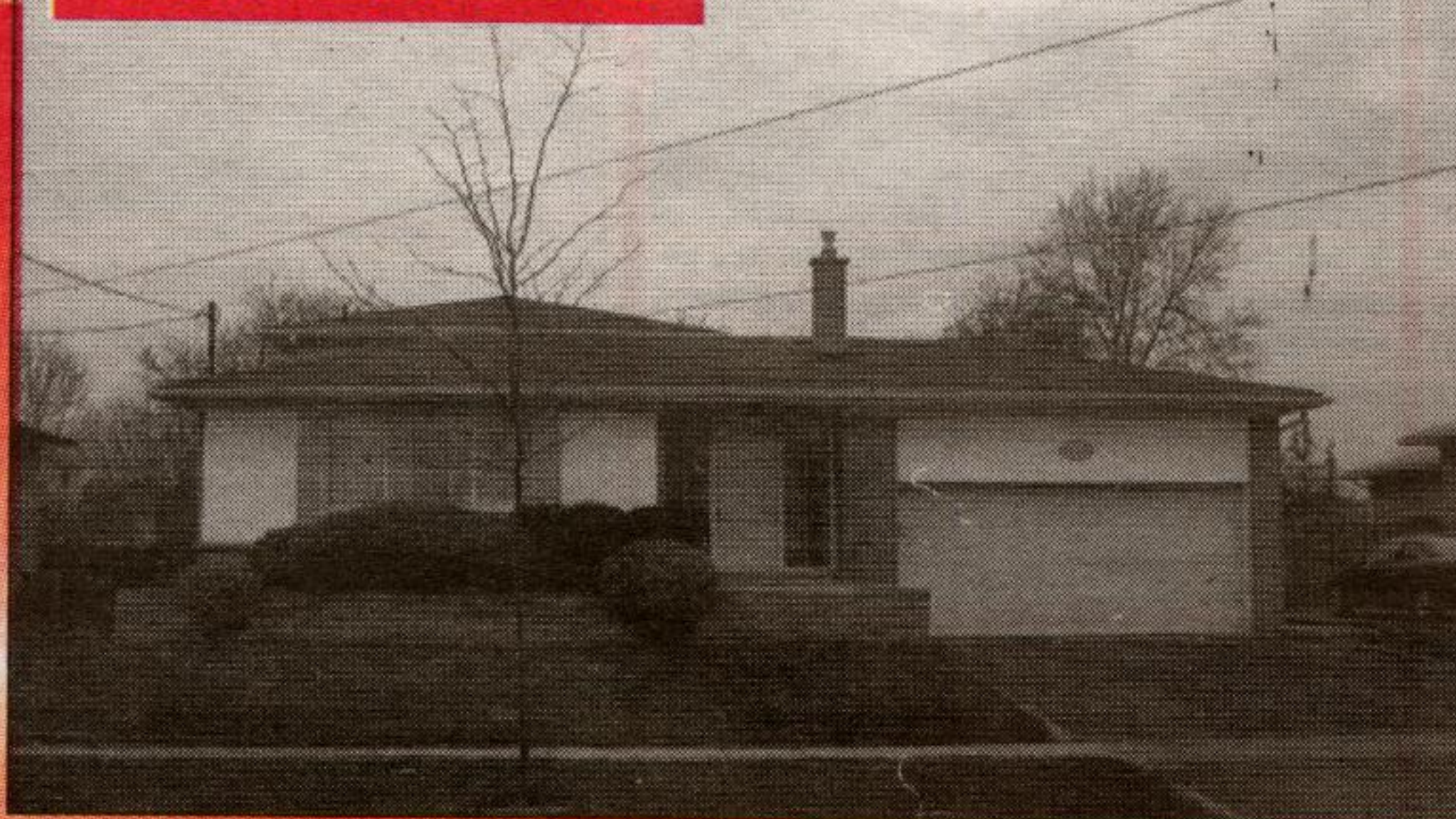
**905-877-5165**



**Johnson Associates**  
HALTON LTD., REALTOR



**NEW LISTING**



**OUTSTANDING 4 LEVEL BACKSPLIT ON QUIET CRESCENT - LIST PRICE \$285,000**

This beautifully maintained home is absolutely exquisite! Gleaming hardwood floors throughout, magnificent backyard with mature trees, the kitchen has been renovated and overlooks the lower family room with gas fireplace and walkout to covered patio, the master bedroom has an adjoining nursery or sitting/dressing room, there is a partially finished basement with tons of storage space and all of this on a 65' x 110' fully fenced lot! Call **Jodie\*** today for your personal tour.



**RAVINE! 2800 SQ. FT. 'NEVIS' LIST PRICE \$429,900**

Gorgeous executive home on a 50' ravine lot! Two storey family room, with wood burning fireplace, open to kitchen overlooking ravine. Beautifully decorated with crown moldings, upgraded oak staircase, master has 5 piece ensuite, walk-in closet, 2nd bdrm. has semi ensuite and walk-in closet, ceramics, newer broadloom on lower level, CAC, CVAC, interlock walkway and front porch. Call **Jodie\*** today. 03-290-30



144 MOUNTAINVIEW, GEORGETOWN



3 GOODERHAM, GEORGETOWN



2958 RAINWATER, MISSISSAUGA