

# OSH KOSH

OLD NAVY GAP ADIDAS DISNEY TOMMY HILFIGER NIKE

... PLUS MANY MORE DESIGNER NAMES  
GENTLY USED CLOTHING INFANT TO YOUTH SIZES

*Huge*

## SPRING & SUMMER SALE

### ONE DAY ONLY

SUNDAY, MAY 4, 2003 ~ 12-3 P.M.

**Acton Arena Community Hall**  
415 Queen St. E., ACTON

CASH ONLY  
sunshinekidswear@sympatico.ca (519) 836-8522

**Dr. Anoop Sayal & Associates** FAMILY & COSMETIC DENTISTRY  
905-877-2273 (CARE)

presents

## LEAF LEGEND JOHNNY BOWER



All Autographs \$10<sup>00</sup> Cash Only  
Pre-Autographed 8x10's \$15<sup>00</sup> Cash Only

**Saturday May 3rd, 2003**  
2:30 - 4:30 pm  
at Georgetown Market Place Mall

For more information contact Lisa at (905) 877-2273  
All monies raised to benefit Georgetown Bread Basket

## Tip for Teens – The bottomless (?) teenage pit depletes parents

During teenager years, a quiet, unspoken painful, psychological struggle goes on in the inner world. Giving up the nurturing they enjoyed as young children does not come easily, and when teens are struggling psychologically to wean themselves from parental support, their methods of “taking” from parents can actually increase, although the methods use to “take” become more subtle.

To help teens in this struggle, parents can be very clear in just what they will do, to fill what might seem like a bottomless pit of financial requests. How much will parents contribute towards clothing, transportation, personal grooming products etc.?

Can teens expect parents to buy expensive brand name shampoo, or does the teen have to make do with the family “no name” products or does the teen have to buy all personal grooming products? How much allowance does the teen get and what is s/he expected to cover with that money?

There will be no other period in life that it will be so necessary to make these agreements clear, perhaps even in

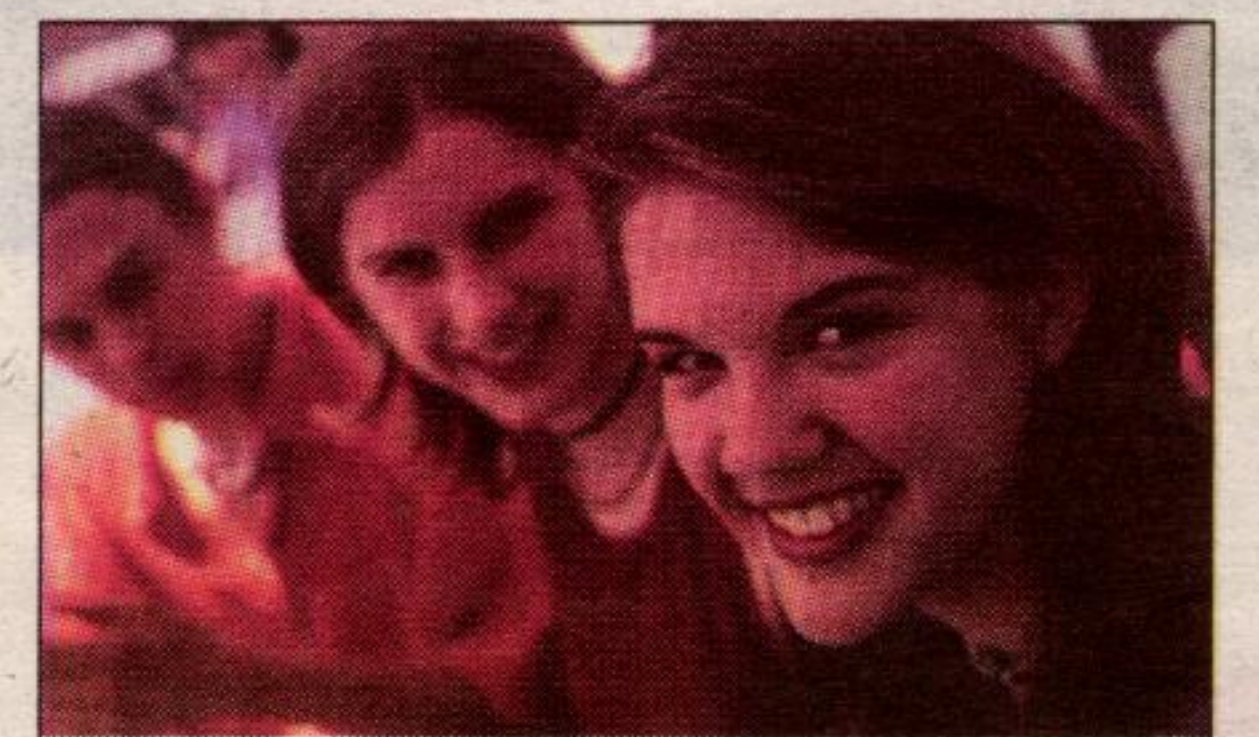
writing.

Expect angry episodes from the teen when the “eternal supply of love” dries up and you remind your teen that he is responsible for his movie admission, as previously agreed. This is when going back to original, written agreements can help a great deal.

The more concrete these financial arrangements can be for the adolescent, the easier it is for the teen to cope with the sadness and loss (which often remains hidden on an unconscious level) he experiences as he assumes financial responsibilities that were once offered generously by parents.

Keeping this psychological struggle in mind might make parents less angry when their children try to make unreasonable demands. Next issue: Teens and credit cards.

**Can teens expect parents to buy expensive brand name shampoo, ...?**



# THEY ONLY COME IN EXTRA STRENGTH



4210 COMPACT UTILITY TRACTOR  
• 28-hp • Rear PTO • Differential lock

**0% Financing for 24 months**

www.JohnDeere.com

## 790 COMPACT TRACTOR

- 30-hp
- Direct fuel injection
- Independent PTO

**2.9% Interest for 24 months\***



**TRIM ON THE DOTTED LINE.**

Take 20% off our tough trimmer line.

PRINT THE COUPON AT  
[WWW.GREENTRACTORS.CA](http://WWW.GREENTRACTORS.CA)  
FOR SAVINGS AT ALL GREEN TRACTOR LOCATIONS.



NOTHING RUNS LIKE A DEERE™

## YOUR COMMERCIAL EQUIPMENT SOLUTION CENTERS.

**HALTON TURF & TRACTORS, INC.**  
1589 STEELES AVENUE  
MILTON  
(905) 878-8121

**ELMIRA FARM SERVICE**  
RURAL ROUTE #3  
ACTON, ON L7J 2L9  
(519) 833-9332  
1-800-685-3835

**ELMIRA FARM SERVICE**  
122 CHURCH ST. W.  
ELMIRA, ON N3B 2Z6  
(519) 669-5453  
1-800-265-6188

**ELMIRA FARM SERVICE**  
HIGHWAY 23 NORTH  
LISTOWEL, ON N4W 3G6  
(519) 291-5390  
1-888-JDPARTS



D2000-24-54414

\*Offer valid only at participating dealers. Offer valid from 17 March, 2003 until 07 July, 2003 and is subject to John Deere Credit approval. For personal or commercial use. For example, on a 5205, 790, 990, 5105 Tractor, based on a selling price of \$30,047.00; \$12,757.00; \$18,223.00; \$27,862.00 less a 0% down payment (no down payment is required) results in a balance of \$30,047.00; \$12,757.00; \$18,223.00; \$27,862.00 to be financed for a maximum of 2 years with 24 monthly payments of \$1,290.12; \$547.75; \$782.44; \$1,167.72, totalling \$30,963.12; \$13,146.00; \$18,778.56; \$28,505.28, based on 2.9% APR with a cost of borrowing of \$916.12; \$389.00; \$555.56; \$843.28. In the event the loan goes into default, the charge for amounts past due is 24% APR. Taxes, set-up and delivery charges not included and may increase price or monthly payments. See your dealer for complete details and other financing options. Program subject to change, without notice, at any time. \*See dealer for complete details.