

CALL MARTHA SUMMERS FOR A FREE MARKET EVALUATION CALL MARTHA SUMMERS FOR A FREE MARKET EVALUATION

MARTHA SUMMERS = PROVEN PERFORMER*

MARTHA SUMMERS*
 (905) 877-5165

Mississauga (905) 874-3040 Erin (519) 833-9714



Johnson Associates

HALTON LTD., REALTOR

WEBSITE: www.marthasummers.ca E-MAIL: msummers@idirect.com



26 ACRE RETREAT LOG HOME - STONE BARN \$419,000
 Wonderful 26 acres, spring fed pond, wooded yet open and only 10 minutes to the Georgetown "GO". Quaint round log 2 bdrm home with stone fireplace, dining room, pine floors, 24 x 40 stone 2-stall barn/garage with storage loft. Close to Bruce Trail. **Martha Summers*** 518-31



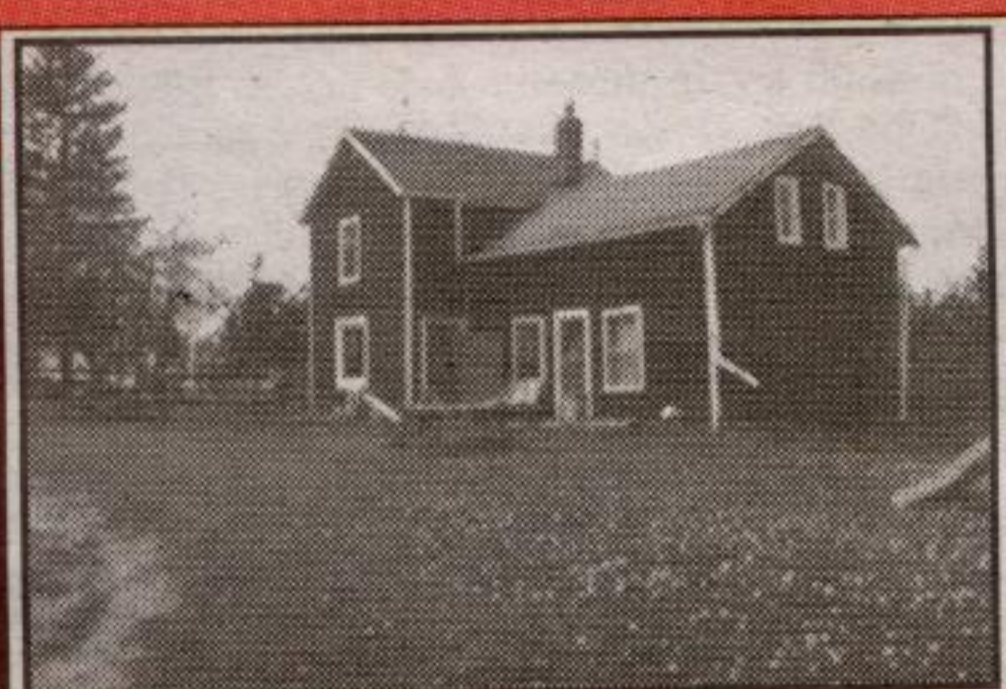
BEST PRICE

EARLY POSSESSION POSSIBLE!! \$232,000
 Wonderfully updated 3 bedroom home, hardwood floors. Barzotti oak eat-in kitchen, appliances, main floor family room, separate living and dining rooms. 66'x 132' mature lot, large deck, tree house and more!! **Martha Summers*** 02-556-90



NEW

YOUR COUNTRY DREAM!!! \$349,000
 Wonderful 10 acres, sun-filled Lancelotti home, full walkout basement, cherry hardwood floors, open concept, vaulted beamed ceilings, barn, paddock, detached garage. **Martha Summers*** 02-557-91



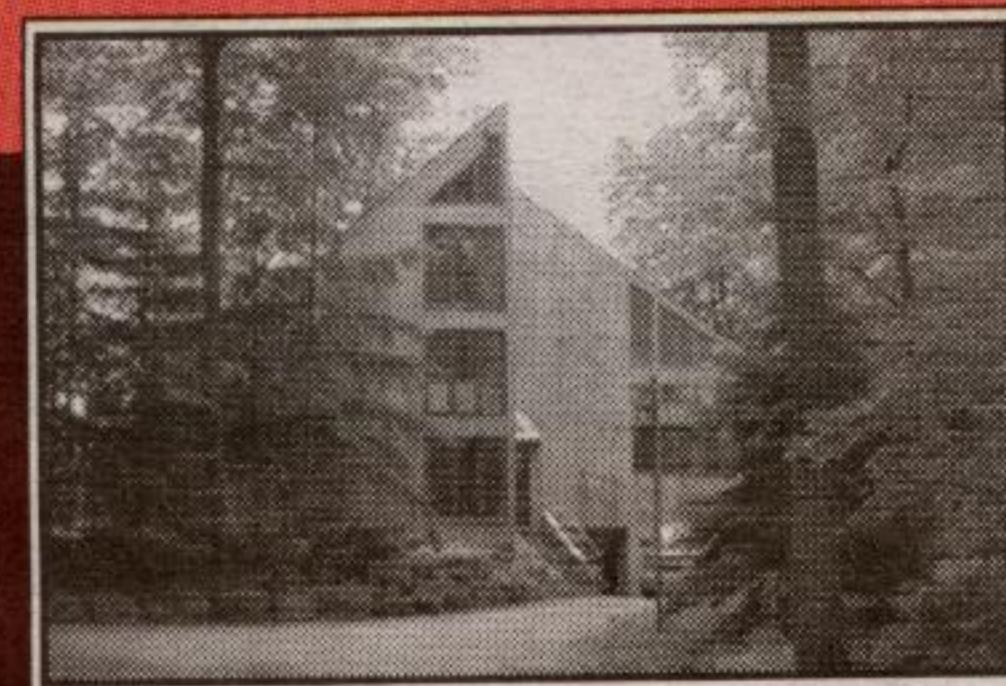
ORANGEVILLE INVESTMENT \$359,000
 Wonderful 68 acres - recently cleared and planted fields, plank fencing, 2 road frontages, decorative stone. Original 3 bdrm character farmhouse. Renovate or build overlooking the Hockley Valley. **Martha Summers*** 315-99



COMMERCIAL OR PRIVATE
 Wonderful charm. Amazing upgrades, huge mature backyard with inground pool, 3 bedrooms plus 2 bedroom apartment. \$269,000. **Martha Summers*** 489-91



CALEDON - MINUTES TO DEVIL'S PULPIT
 Beautiful property - long views, "seconds" to Devil's Pulpit. Lovely updated 3 bedroom bungalow, huge oak country kitchen with walkout to patio. Stone fireplace with insert in family room. \$389,000. **Martha Summers*** 538-60

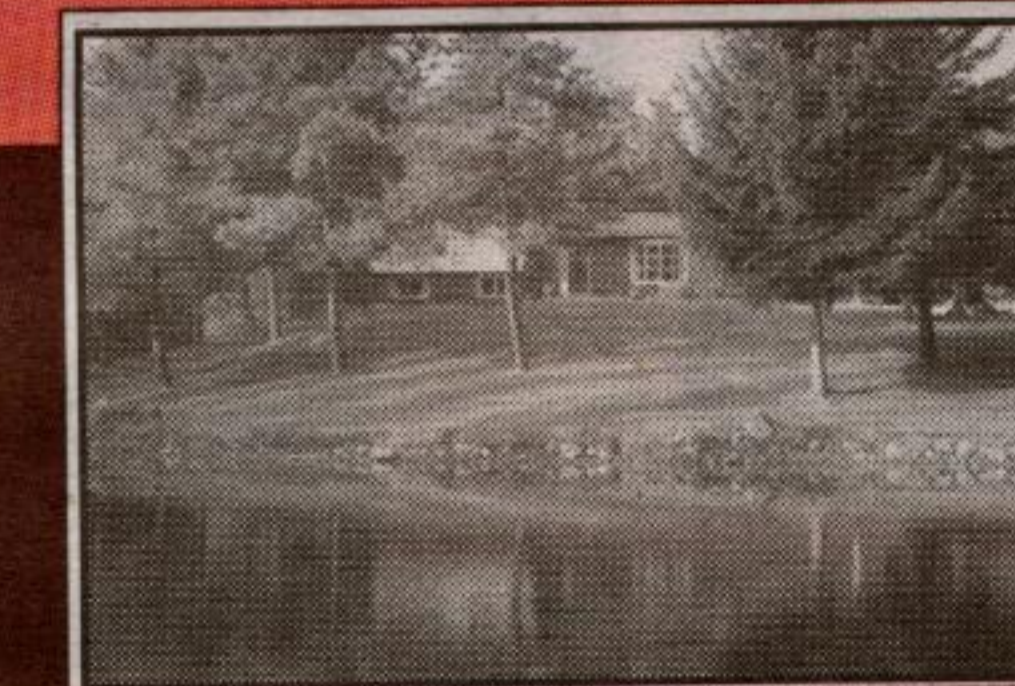


WOODED WONDERLAND
 Wonderful mature hardwood, open sun filled spaces and an architecturally unique home with lofted rooms, hardwood floors, stained glass and walkouts at various levels to a sundeck or overlooking pool or the great yard. Situated in a prestigious area close to golf, skiing, the Bruce Trail and horseback riding. \$565,000. **Martha Summers*** 376-60



NEWEST PRICE

STONE CHARM GLEN WILLIAMS \$279,000
 Superb quality, living, dining, kitchen, all open enjoying deep set windows, hwd floors, mn. flr. laundry, master suite with vaulted ceilings, full ensuite, walk-in closet, 1/2 acre. **Martha Summers*** 483-31



WALK IN YOUR OWN PARK
 Superb 1.9 acres, spring fed pond with trout, 3 bedroom, family room walkout to patio, double garage, separate single garage. Minutes to "GO". \$329,000. **Martha Summers*** 501-99



WORK FROM HOME 25 ACRES - PRIVACY
 Country 4 bedroom home with fir beams, fireplaces and lots of charm, separate 3 bay garage with finished loft above suitable as self contained 3 bedroom apt. or home office space with private access. Inground pool, spring fed pond, rolling land private and treed, suitable for couple of horses. Very Special at \$599,000. **Martha Summers*** 02-209-91

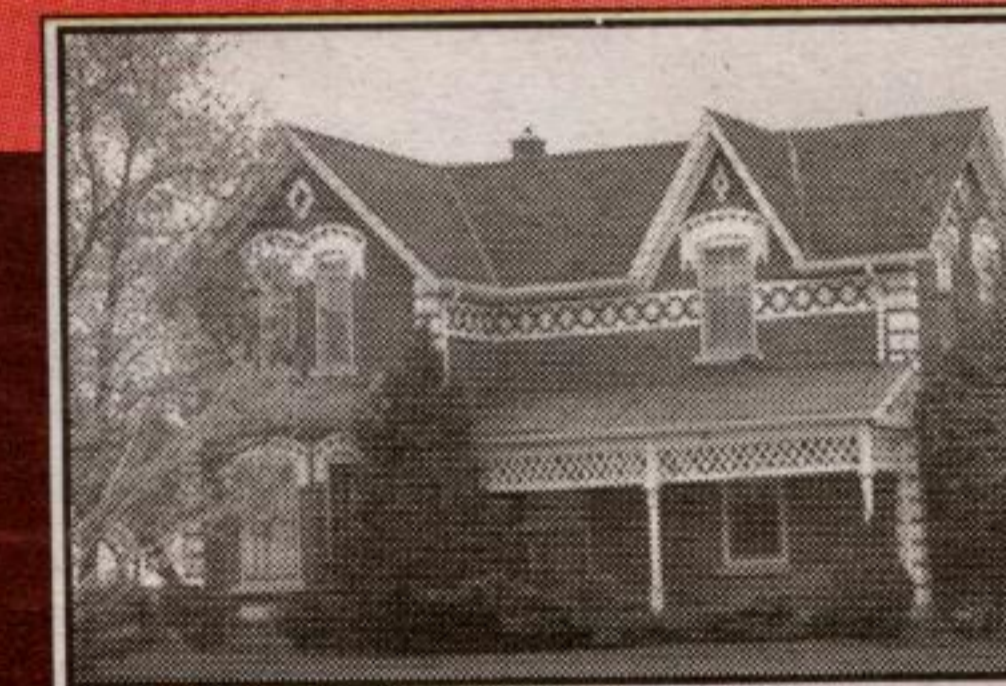


NEW

GREAT BRAMPTON LOCATION \$210,000
 3 bedroom freehold row home, 1 car garage, fenced yard, close to shopping centre and public bus route. Better hurry!! **Martha Summers*** 02-548-19



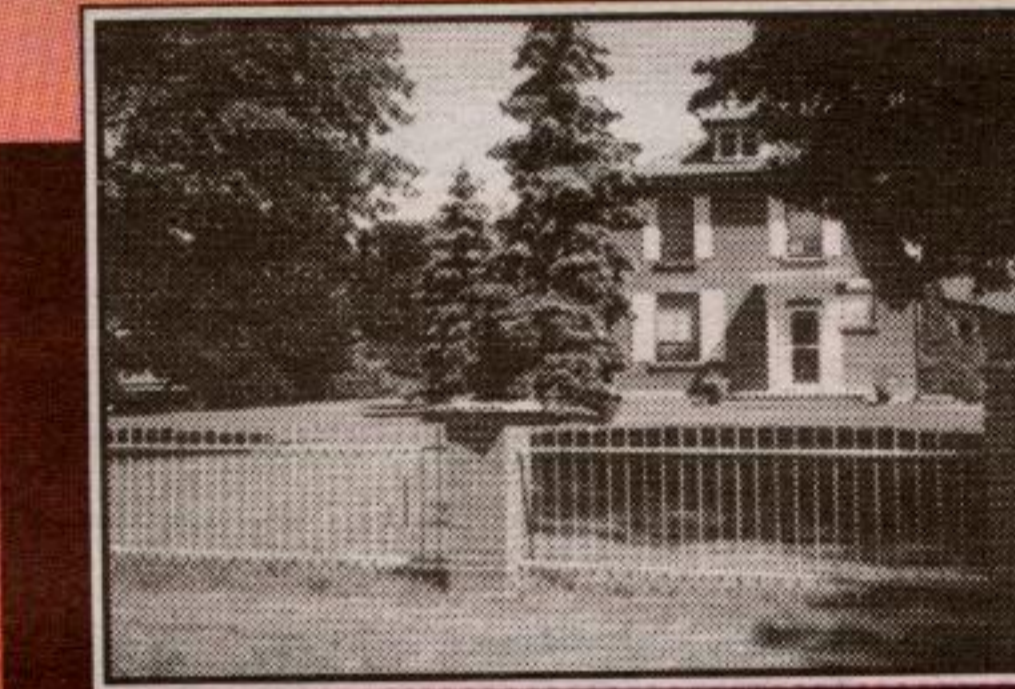
A CHURCH A HOME
 Superb restoration of the "Bethel" church into an incredible home. True cathedral ceilings, original hardwood flooring, stained glass windows. Open concept with flair and charm, 3 bdrms, 2 bathrooms. \$379,000. **Martha Summers*** 02-514-91



90 ACRE FARM \$650,000
 Special century 4 bedroom Victorian farmhouse with all the original charm and character on 90 fabulous acres with wonderful views and sunsets, workable fields, hardwood bush, drive shed, barn. Minutes to Erin Village. **Martha Summers*** MS02-320-91



ALL THE BELLS AND WHISTLES \$799,000
 Incredible 3+ acres backing onto woods - 4,000 + sq. ft. with approx 2,000 sq. ft. finished lower level. 7+ bedrooms, 5 bathrooms, sunfilled main level office, 2 fireplaces, hardwood floors, ceramics, inground pool, hot tub, night lighting, 3 car garage plus many more upgrades. Min. to 401. **Martha Summers*** MS02-239-31



HALTON 85 ACRE FARM \$749,000
 Totally renovated with quality, gently rolling farmland, huge pond with island, large barn, drive shed, separate garage, separate office building, airplane hanger, minutes to Georgetown on paved road. Location and Value. **Martha Summers*** 480-31



NEW PRICE

GREAT SINGLE FAMILY OR WITH IN-LAWS
 Lots of original character and all the upgrades. Oak floors, high ceiling, recent kitchen plus more. In-law suite with separate yard and entrance. Large deck, mature landscaped lot, walking distance to all amenities. \$219,000. **Martha Summers*** MS02-230-99



CORPORATE RETREAT \$1,450,000
 Spectacular 23 acres, woods, water, tennis and absolute privacy just south of Belfountain. Stone and wood home with incredible vistas from every room. Indoor pool, 5 bdrms, 6 baths, floor to ceiling stone fireplaces, maple kitchen, hardwood flrs. Separate 4 bay gar. **Martha Summers*** 433-30



COMPLETE FOR COUNTRY LOVERS

100 acres, 3 stocked ponds, woods, approx. 5600 sq. ft. finished on 3 levels with cathedral ceilings, pine floors, exposed timbers. Stunning!! Horse barn with Beatty stalls, 30x60 insulated garage, 2 loafing barns. 10 min. to Georgetown "GO" train. \$1,500,000. **Martha Summers***

LAND LAND LAND LAND LAND LAND LAND LAND

1. **Ballinafad** - 4.64 acres, treed, paved road, \$164,000
2. **Terra Cotta** - 4.9 acres - inside hamlet - rolling - mixed bush - views. \$299,000.
3. **Georgetown** - Country close to "GO" .9 acre, the well is in. \$148,900.
4. **Caledon** - 15 acres south of Belfountain, gently rolling, close to skiing, golf and riding. \$249,000.
5. **Ballinafad** - 1.4 acres, treed lot, paved road, \$129,000
6. **Erin** - .6 acres, paved road, \$110,000
7. **Erin** - Great Lot, Great Price - Build your dream on 1/2 acre lot surrounded by country. Close to Hillsburgh and Orangeville, \$79,900
8. **Caledon** - 1 acre south of Inglewood across from golf course. Mature trees, ravine, \$180,000
9. **15 Acres South of Belfountain** - 175 metres frontage, close to skiing and golf. Desirable Area. \$239,900.
10. **Desirable Glen Williams** - 1/2 acre, town water, gas, \$169,000.
11. **South Erin** - 18 acres, great rolling, nicely treed, entrance, permit, \$200,000.



9661 27 SIDEROAD, ERIN



16797 KENNEDY ROAD, CALEDON



20285 WILLOUGHBY RD., CALEDON



12554 HERITAGE ROAD, CALEDON

CALL MARTHA SUMMERS FOR A FREE MARKET EVALUATION CALL MARTHA SUMMERS FOR A FREE MARKET EVALUATION

CALL MARTHA SUMMERS FOR A FREE MARKET EVALUATION

CALL MARTHA SUMMERS FOR A FREE MARKET EVALUATION