

## COMMUNITY CALENDAR

Please note: Community Calendar is a free editorial service to non-profit groups, churches, schools, and charity-supported events only.

Deadline for submission is noon Monday for the Wednesday edition and 4 p.m. Wednesday for the Friday edition. Fax to Community Calendar: 905-873-0398; e-mail: cgamble@independentfreepress.com or drop off at The Independent & Free Press front desk located in the Georgetown Market Place.

### Thursday, Nov. 28

**Parkinson's support:** Two speakers from the Parkinson Society of Canada will be the guests at the Parkinson Support Group meeting to be held 7:30 p.m. at the Georgetown Seniors Centre.

**Christmas Assistance:** Applications for the 2002 Acton Christmas Assistance Program will be accepted at the Salvation Army Family Services Office, 120 Mill St. E., Acton on Tuesdays and Thursdays, 9 a.m. to noon until Dec. 12. Those unable to attend those dates are asked to come on Saturday, Dec. 7, 11 a.m. to 1 p.m. Applications must be completed in person and identification is required.

**Limehouse euchre:** Euchre will be held at the Limehouse Memorial Hall, 7:30 p.m. Lunch

and prizes provided by the Limehouse Women's Institute.

**Emotions Anonymous:** Is your life becoming unmanageable? Emotions Anonymous can help! The group meets every Thursday, 7:30 p.m. sharp at Norval Presbyterian Church, 499 Guelph St. in Norval, rear entrance to the basement meeting room. No cost or no commitment. Info: Angela or David, 905-873-2852.

**Prenatal classes:** Halton Region Health Department's Healthiest Babies Possible prenatal program, held Thursdays at the Bennett Centre, is accepting registrations. Sessions include Off To A Great Start, Getting Ready, Your Baby's Birth, Breastfeeding, The First Year After Birth and Caring For Your Baby. Attend the series or individual session. To register/info call 905-693-4242, ext. 7899 or 1-866-442-5866, ext. 7899.

### Friday, Nov. 29

**Twisters tournament:** Halton Hills Twisters Girls Hockey Association is hosting its third annual tournament with approximately 50 teams across Ontario playing games from Friday afternoon to Sunday. Please come out and support our teams. Anyone interested in volunteering your time for Registration and Timekeeping call 905-877-4590.

**PWP meets:** Parents Without Partners (Peel Chapter), a non-profit organization providing support for single parents and their children, will host local lawyer, Corrine van der Burg as speaker, at Century Gardens Recreation Centre, Brampton, 7:45 p.m. The topics are: Legal Options re: Custody & Access and Collaborative Family Law, a new approach to the divorce process. General public welcome. Call Harry, 905-457-3037, for more information.

### Saturday, Nov. 30

**Montgomery Christmas:** Village of Norval celebrates Montgomery Christmas with church bazaars, lunches, special guests, book signings, displays, heritage seed sale, kid's activity table, woodcarving, free draws. Music by Anneliese Cameron, Celtic Harper and vocalist and the roving Brass Ensemble. 10 a.m.-4 p.m. Info: 905-846-5000 or www.canoe-country.com

**English tea:** Churchill Community Church (Churchill Rd. at Erin/Halton Boundary Line) hosts

an English Christmas Tea, 1-4 p.m. Bring your family and friends to enjoy a variety of teas, coffee, finger sandwiches and English-style sweets and cookies. Cost \$6. Also on sale: Christmas cakes, bake goods, penny sale, crafts and raffle for a Christmas wreath.

**Skate with Santa:** Come skate with Santa, 6-7 p.m. at Memorial Arena. A candy cane will be given to every child. Tickets \$5 per child or \$10 per family with proceeds to support the Minor Novice AA Raiders. Krispy Krems donuts will be for sale.

**Norval craft sale:** Norval Presbyterian Church celebrates Montgomery Christmas, 10 a.m. to 3 p.m. with a bake table and craft sale. Lunch begins at 11:30 a.m.

**Bach Chorale presents:** Georgetown Bach Chorale presents An Advent Celebration—Anticipating the Coming of the King, 8 p.m. in Knox Church, Georgetown. The choir will sing several selections well suited for the advent season accompanied by a chamber orchestra and guest soloists and conducted by Juan Castela of Spain. Tickets, \$20, may be obtained from Chorale members or at the following locations: Foodstuffs, 89 Main St. S. (905-877-6569), Timepieces, 118 Mill St. (905-873-8980) or Young's Pharmacy, 47 Main St. (905-877-2711).

**St. Paul's bazaar:** St. Paul's Anglican Church, Norval holds a bazaar, 10 a.m. to 2 p.m. Crafts, penny table, bake table, collectibles, raffle for a day at Adamson's Spa. Lunch served.

### Sunday, Dec. 1

**Book sale:** The Georgetown branch of the Halton Hills Library is holding a book sale, noon to 4 p.m. Info: 905-873-2681.

**Christmas Lessons and Carols:** St. John's Anglican Church, Stewarttown presents Christmas Festival Service of Lessons and Carols featuring the Hand Bell Choir of St. Peter's Anglican Church (Erindale), 7 p.m. Free will offering. Refreshments following the service.

**Family concert:** The Georgetown Choral Society presents A Family Christmas, 3 p.m. at Knox Church, Georgetown. This is a benefit concert for the church via a free-will offering. A concert suitable for young and old.

**Charity auction:** Canadian Mental Health Association holds its annual Christmas Charity Auction, 1-1:30 p.m. (viewing), 1:30 p.m. auction. Join the bidding for \$5. To be held at Glen Abbey Golf Course, 1333 Dorval Dr., Oakville. Everyone who bids will be entered in a draw for raffle prizes. Info: 905-693-4270.

### CORRECTION

In the Nov. 20 Ask A Pro Column the name James Bower (B.Sc Phm) should have appeared as James Bowen (B.Sc Phm). The Independent & Free Press regrets any inconvenience this may have caused.

**The Independent & Free Press**



By Cory Soal R.H.A.D.

... Lend Me Your Ears

### TINNITUS

Or ringing in the ears, does not cause hearing disorders, it may accompany decreased hearing and other ear symptoms such as pressure, unsteadiness or dizziness. Often, it occurs alone.

Tinnitus arising from the inner ear frequently indicates more permanent and serious disease. Exposure to a sudden loud noise - a gunshot or explosion, for example results in tinnitus that subsides to a low level of ringing for an extended period of time. Disorders affecting the cochlea (hearing center) of the inner ear can cause tinnitus.

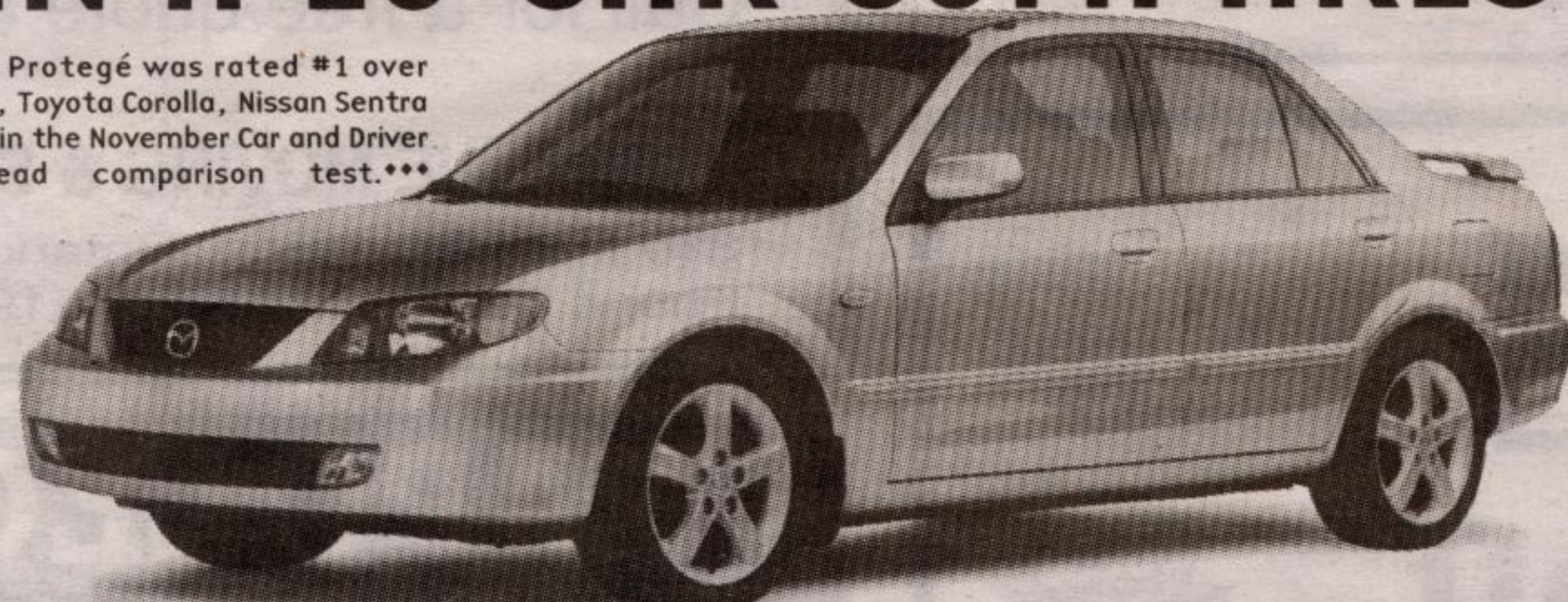
To find out more about this common problem call...

The Georgetown **HEARING CLINIC**  
We care about your hearing!  
Professional Arts Building  
99 Sinclair Ave., Suite 210  
Georgetown  
**(905) 873-6642**

# TORONTO AREA MAZDA DEALERS PRESENT

## #1 IN A 10 CAR COMPARISON TEST - CAR AND DRIVER\*\*

The Mazda Protegé was rated #1 over Honda Civic, Toyota Corolla, Nissan Sentra and others in the November Car and Driver head-to-head comparison test.\*\*



**1.9%**  
PURCHASE FINANCING FOR 36 MONTHS†

PLUS  
**NO PAYMENTS FOR 90 DAYS\***

OR  
**NO SECURITY DEPOSIT ON LEASES\*\***

### 2003 MAZDA PROTEGÉ SE

lease from **\$179\*\*** OR cash purchase from **\$16,295\***  
per month / 48 months

#### INCLUDES AIR CONDITIONING

• Class-leading interior room • AM/FM/CD 4 speaker stereo system • Side door impact beams • 60/40 split rear seats • \$2,995 down or trade equivalent on lease. Lease payment includes freight and P.D.E.

### 2003 MAZDA PROTEGÉ LX

lease from **\$197\*\*** OR cash purchase from **\$17,245\***  
per month / 48 months

#### ALL OF THE FEATURES OF AN SE PLUS:

• 2.0L 130-hp engine • Keyless entry • Power locks • 15" wheels • And much more! • \$2,995 down or trade equivalent on lease. Lease payment includes freight and P.D.E.

### 2003 MAZDA PROTEGÉ LX GT

lease from **\$225\*\*** OR cash purchase from **\$19,495\***  
per month / 48 months

#### ALL OF THE FEATURES OF AN LX PLUS:

• Power windows and mirrors • 15" alloy wheels • Power moonroof • Rear spoiler • Fog lights • Cruise control • And much more! • \$2,995 down or trade equivalent on lease. Lease payment includes freight and P.D.E.

### 2003 MAZDA PROTEGÉS



**1.9%** purchase financing for 36 months†  
lease from **\$229\*\*** OR cash purchase from **\$20,185\***  
per month / 48 months

R 2003 Carguide Best Buy

• 2.0L DOHC 16-valve 130-hp engine • 16" alloy wheels • 4-wheel disc brakes with ABS • AM/FM/CD 4 speaker stereo • Cruise control • 60/40 split rear seats • Fog lights • Remote keyless entry • Power locks, windows & mirrors • Leather-wrapped steering wheel and shift knob • \$3,195 down or trade equivalent on lease. Lease payment includes freight and P.D.E.

#### WITH CONVENIENCE PACKAGE

### 2003 MAZDA MPV DX

**1.9%** purchase financing for 36 months†  
lease from **\$279\*\*** OR cash purchase from **\$26,695\***  
per month / 48 months

HIGHEST IMPACT PROTECTION RATING POSSIBLE\*



• 3.0L 200-hp V6 engine • 5-speed automatic transmission • Air conditioning • AM/FM/CD/cassette 4 speaker stereo • Steering wheel audio controls • 2nd row Side-by-Slide™ seats and 3rd row Tumble-Under™ seats • Dual sliding doors with power down windows • Power windows, locks and door mirrors (heated) • Cruise control • \$4,995 down or trade equivalent on lease. Lease payment includes freight and P.D.E.

**GREAT DEALS ON REMAINING 2002's. FINANCE RATES FROM 0%†††**



OUR PRE-DELIVERY COMMITMENT MEANS EVERY NEW MAZDA IS CHECKED OUT, GASSED UP, AND FITTED WITH FLOOR MATS.  
ROADSIDE ASSISTANCE PROGRAM Ask about the Mazda peace of mind promise standard on every new Mazda.  
MAZDA LEADERSHIP WARRANTY Ask about our outstanding comprehensive and powertrain warranty coverage.

**ZOOM-ZOOM**  
www.mazda.ca

Acton  
Achilles Mazda  
357 Queen St. E. Acton  
(519) 853-0200  
Toronto (905) 453-8965

ASK YOUR DEALER ABOUT MAZDA'S GRADUATE PROGRAM.

MAZDA LEASE 1.9% Purchase Financing/36 months available on the 2003 Mazda Protegé, ProtegéS and MPV. Finance examples: for \$10,000 at 1.9% Purchase Financing the monthly payment is \$285.99 for 36 months, C.O.B. is \$295.64 for a total of \$10,295.64. ††† 0% Purchase Financing/48 months available on the 2002 Mazda MPV. Finance examples: for \$10,000 at 0% Purchase Financing the monthly payment is \$208.33 for 48 months, C.O.B. is \$0 for a total of \$10,000. \*No payments for 90 days applies to all purchase finance offers on 2002 and 2003 Mazda vehicles. No interest charges will apply during the first 90 days after purchaser takes delivery of a participating vehicle. After the first 90 days interest starts to accrue and the purchaser will repay principal and interest monthly over the term of the contract. \*\*\$0 security deposit on leases applies to all 2002 and 2003 Mazda vehicles. Offers cannot be combined, negotiated price may exceed cash purchase price if advertised finance offer is selected, and may result in a higher effective interest rate. See your dealer for details. \*\*\*Offers available on new cash purchases of 2003 Mazda Protegé SE, Protegé LX GT, ProtegéS, MPV DX and retail leases only. Purchase price and offers exclude freight and P.D.E. of \$925 for cars and \$1,125 for Trucks. Other lease terms available. Total lease obligation for the 2003 Mazda Protegé SE (D4XN53R000)/Protegé LX GT (D4L535R000)/ProtegéS (D5T553R000)/MPV DX (U0D73C000) is \$11,587/\$12,453/\$13,795/\$14,187 including down payment of \$2,995/\$2,995/\$2,995/\$2,995. 20,000 km per year mileage allowance applies, if exceeded, additional \$6 per km applies. License, insurance, registration, taxes and other dealer charges extra. Dealer may sell/lease for less. Dealer order may be necessary. Offers available from November 20, 2002 for a limited time only. Lease and Finance D.R.C. for qualified customers only. See your dealer for details. \*Tests conducted on 2002 Mazda MPV. Highest rating possible for front driver, passenger, side and rear impact protection by the U.S. NHTSA. \*\*Mazda Protegé LX - Car and Driver Nov. 2002