

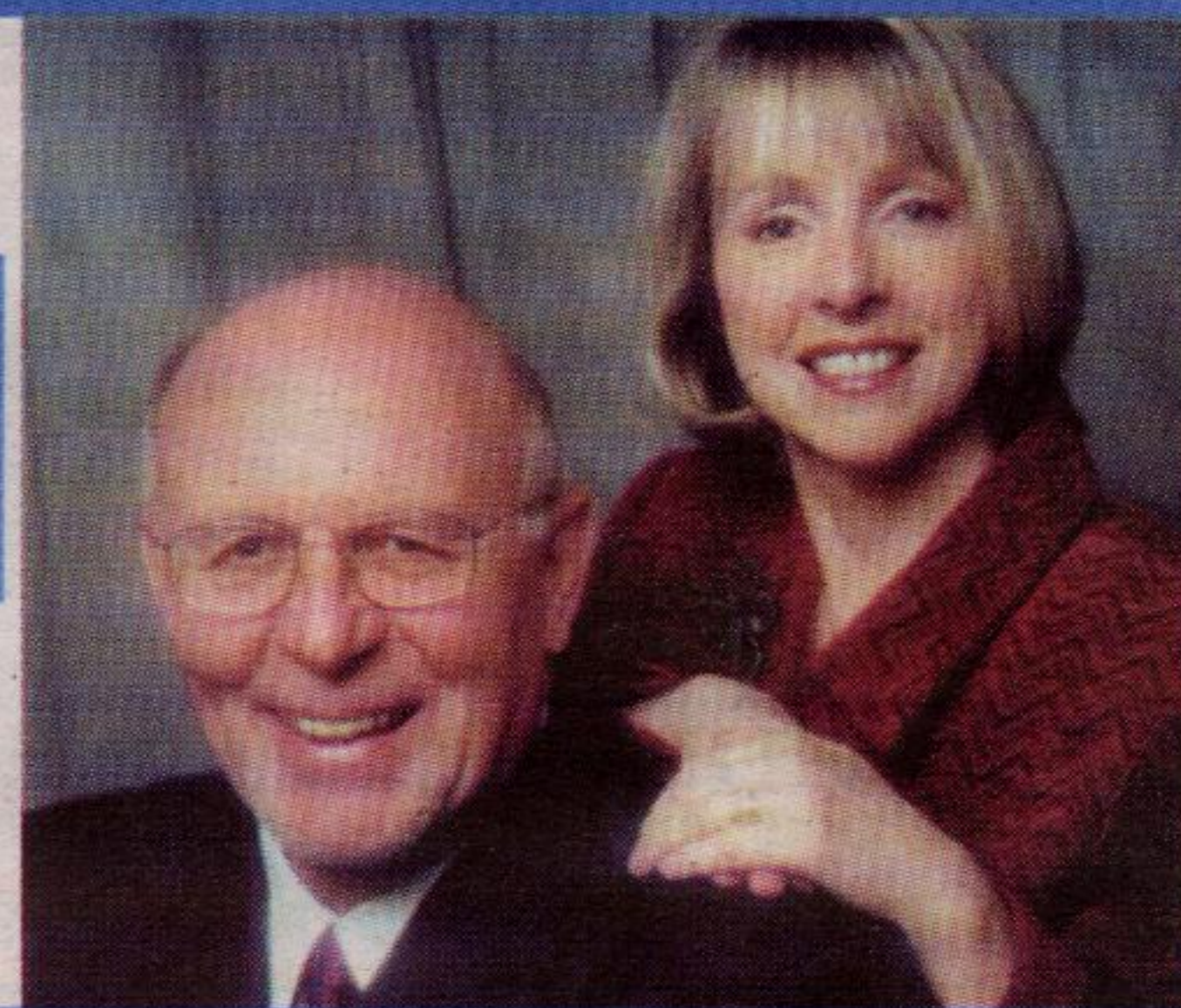
"Exceeding Your Expectations"

Lynn & John Drewry*

* Sales Representatives

Johnson Associates
HALTON LTD., REALTOR

905-877-5165
GO TO: www.lynnandjohndrewry.ca
for more details and pictures



NEW LISTING TODAY!



\$249,900

CHARMING RENOVATED HOME



PARK AREA MAPLE AVE.

\$299,900



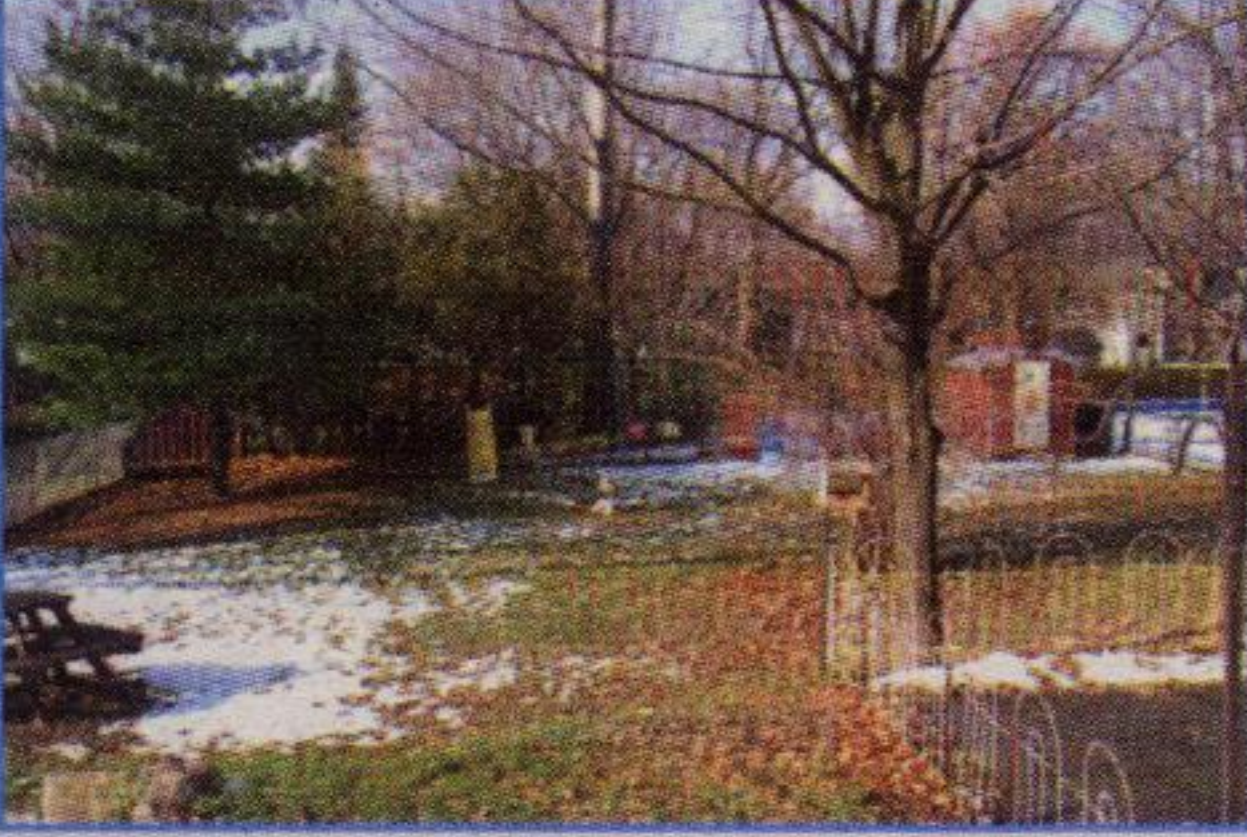
GOING, GOING..

NOT A DRIVE BY - GREAT FLOOR PLAN

\$262,000



RAVINE LOT - CEDARVALE PARK! W/O FINISHED BASEMENT!



- Unique 4 bedroom 2,000 s.f. home on mature 75 x 172 lot
- Completely renovated over last 2 years on main and second floors
- Great mixture of old & new, high ceilings, baseboards, trim
- Character begins w/wrap-around Verandah & yr round Sunroom
- New Pergo flooring on main and second floors, updated windows
- New spacious kitchen with maple cupboards, counters and floors
- Living room with built-ins, main floor Den and 4 piece bathroom
- Main floor large 4th bedroom would be perfect Family room
- 2nd floor has been totally renovated new floors, walls, solid pine drs
- Trim, windows, fixtures and fabulous Bathroom with 1941 claw tub
- Master bedroom with custom pine wall unit, 2 dble closets/TV unit
- Close to downtown Georgetown, steps to Fairgrounds and Schools
- Older full basement, full height with walk-up to backyard
- Forced air gas heating and air conditioning, workshop type bsmt

- Quiet street, Spacious rms, Main floor Den
- 2,550 square feet!
- 4 bdrms + 3 bthrms
- Open concept Kit/Brkfst/Family Rm
- Large formal Living & Dining rooms
- Master w/ closet & 5 pc ensuite
- Prof. build Deck, Privacy out back
- No home looking directly at home
- Long driveway parks 6 w/dble garage

- Charming Cedarvale Crt, private & quiet!
- Great place for kids to play safely
- Spacious main rooms, 4 bdrms up
- Living and Dining rooms w/fireplace
- Kitchen w/lots of counter/cupbrd space
- W/O to 26 x 10' Deck ovrks Ravine
- W/O fin basement + gas frplc & bar
- No traffic, beautiful woods - access Park

\$289,900



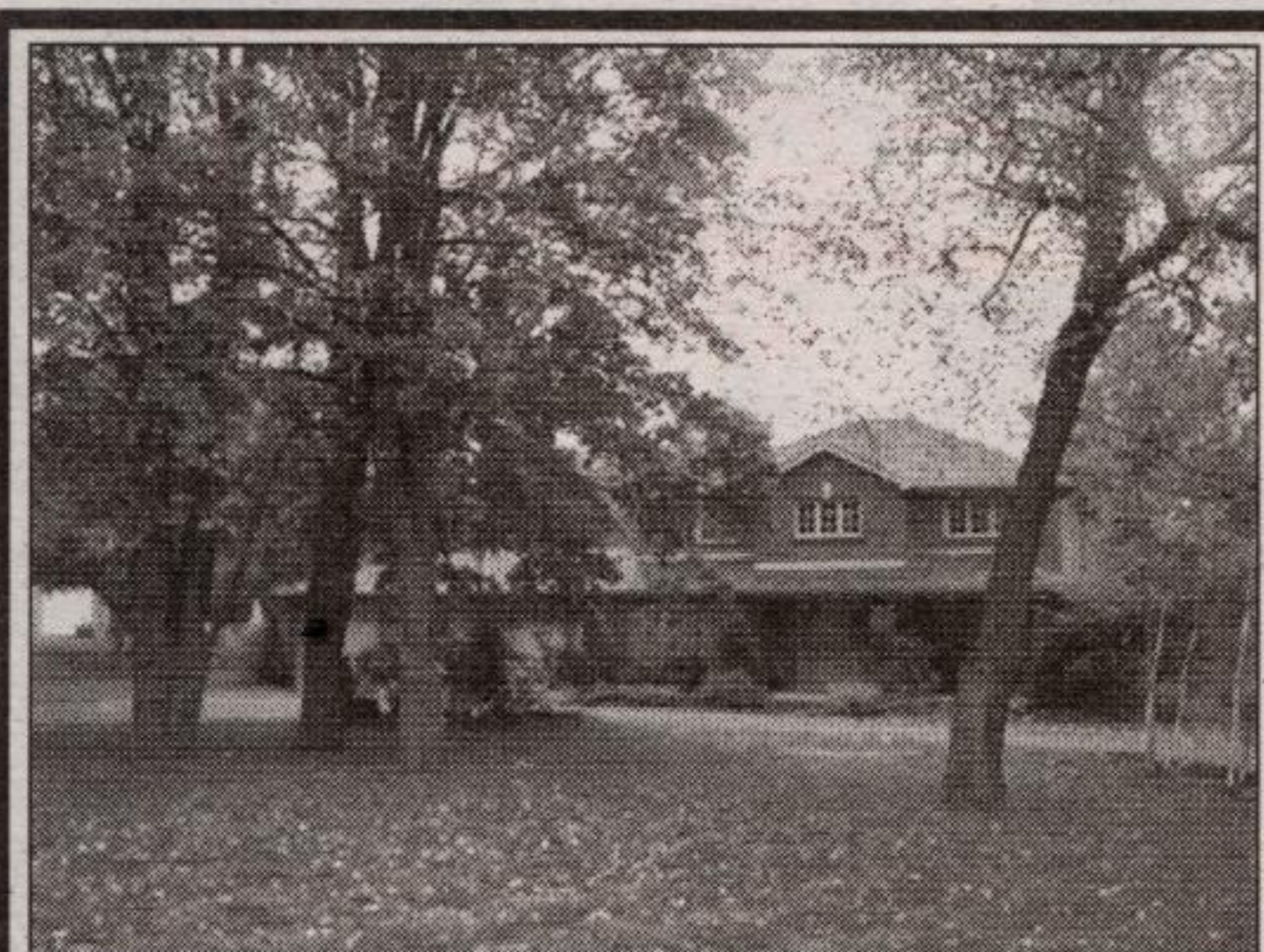
7 ACRES IN LIMEHOUSE GREAT LOT WITH 2 BARN

- Suitable for executive home
- Drilled well, spring, lots of trees
- 94 Foot frontage, L-Shaped lot
- Located next to 11463 22nd Sideroad, Limehouse



INVESTMENT PROPERTY \$1,800,000

- 98 Acres level land
- 1.9 kms to Steeles Ave.
- Frontage - 1,650 feet

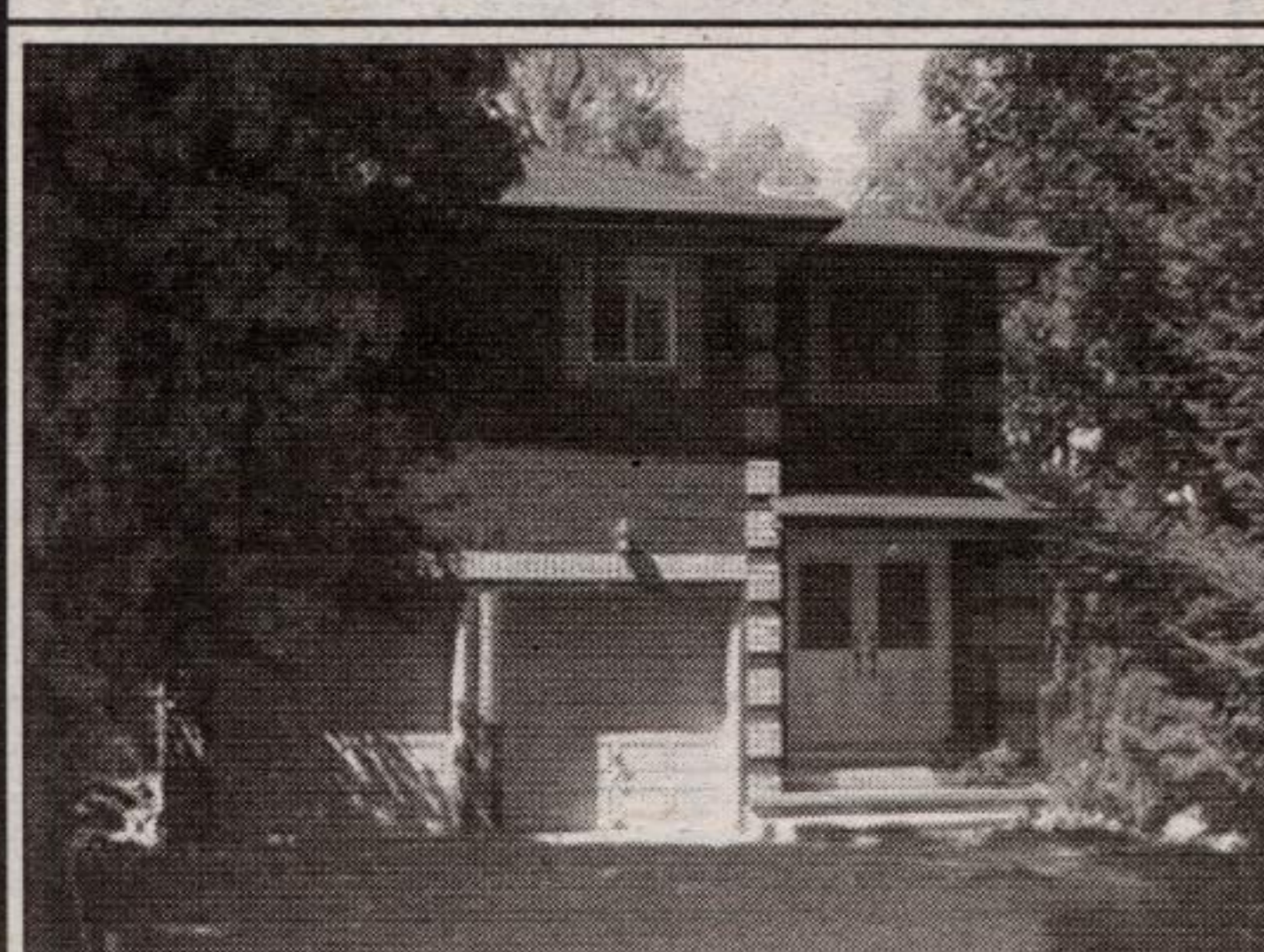


SILVER CREEK ESTATE
Executive home on quiet treed estate lot 1.4 acres, Halton Hills. 4 bedroom, 3 bath, fireplace, large kitchen, triple car garage. Lots of windows. Large ensuite w/whirlpool tub. Walkouts to huge wood deck. Full walkout basement. Lot includes mature hardwood bush, very quiet and private setting. Small out of the way street, perfect for families. Four minute drive to Georgetown on paved roads. Many upgrades including new roof and circular drive. Asking \$529,000.

See it on the web at www.mikebaron.ca



BIG AND BEAUTIFUL
Massive home on 68 foot lot in Georgetown South. Approx. 3900 sq. ft. plus partially finished basement. 4 bedrooms plus 4 washrooms, 2 fireplaces. Large grand foyer. Huge gourmet kitchen. Possible main floor inlaw suite with 4 pc bath. Many upgrades. Beautiful landscaped lot features large decks, maturing trees, interlocking walkways and lots of privacy. Located on a prestigious street in a neighbourhood of fine homes on larger lots. Near schools and shopping. Call Michael Baron* for your tour or view online at www.mikebaron.ca



NORVAL RIVER BANK
1 acre in Norval backing and siding onto Credit River! Modern 10 year old, renovated, all brick home. 4+1 bedrooms, 4 washrooms, finished basement. Open concept kitchen, DR & LR. Walkouts from DR & LR to deck overlooking the River, which flows on 2 sides of the property. Natural gas and town water. 2 car garage. Quiet dead end street in Norval. \$359,000. Swim, fish & canoe in your own back yard! Call Michael Baron* 905-877-5211.



RE/MAX
BLUE SPRINGS REALTY (Halton) CORP.

MICHAEL BARON*
Sales Rep.
905-877-5211 1-800-834-5516

AFFORDABLE STARTER

Looking for your first home? This could be the place to "get your foot in the door". Three bedroom, 3 baths, rec. room with wet bar, and a fenced yard for the little ones. Upgrades - most windows, roof, siding, eaves & soffits, gas fireplace & BBQ hook-up, garburator and some newer carpeting. Offered at \$126,500.



CENTURY CHARMER
Situated on beautifully landscaped, 3-1/2 acre property, with loads of mature trees and perennial beds. This home sits well back from the road. Recent improvements include windows and wrap-around porch, as well as freshly decorated. A four car garage and an interesting original stone "out-building" completes this great picture. Offered at \$389,900.

EXTENDED FAMILY??
Great location and ideal for anyone needing extra space. This 2 bedroom bungalow has attached "above grade" in-law suite. Kitchens in both units have been recently upgraded. Some windows have been replaced. A bit of finishing to be done. Situated on 10 scenic acres with your own trails. Offered at \$293,500. I'd be pleased to show you this property!



NEW PRICE \$109,900

WHY PAY RENT?
Very affordable condominium apartment will carry for less than rent. Completely renovated - ceramics, hardwood floors refinished, bleached oak cabinetry in kitchen with breakfast bar. You won't be disappointed. Give me a call to view this great opportunity. \$109,900.

MARILYN WORRALL* Sales Rep.
853-2086
1-888-833-1945
RE/MAX Blue Springs Realty (Halton) Corp.