

CALL MARTHA SUMMERS FOR A FREE MARKET EVALUATION CALL MARTHA SUMMERS FOR A FREE MARKET EVALUATION

MARTHA SUMMERS = PROVEN PERFORMER\*

MARTHA SUMMERS\*  
 (905) 877-5165  
 Mississauga (905) 874-3040 Erin (519) 833-9714



Johnson Associates

HALTON LTD., REALTOR

WEBSITE: [www.marthasummers.ca](http://www.marthasummers.ca)

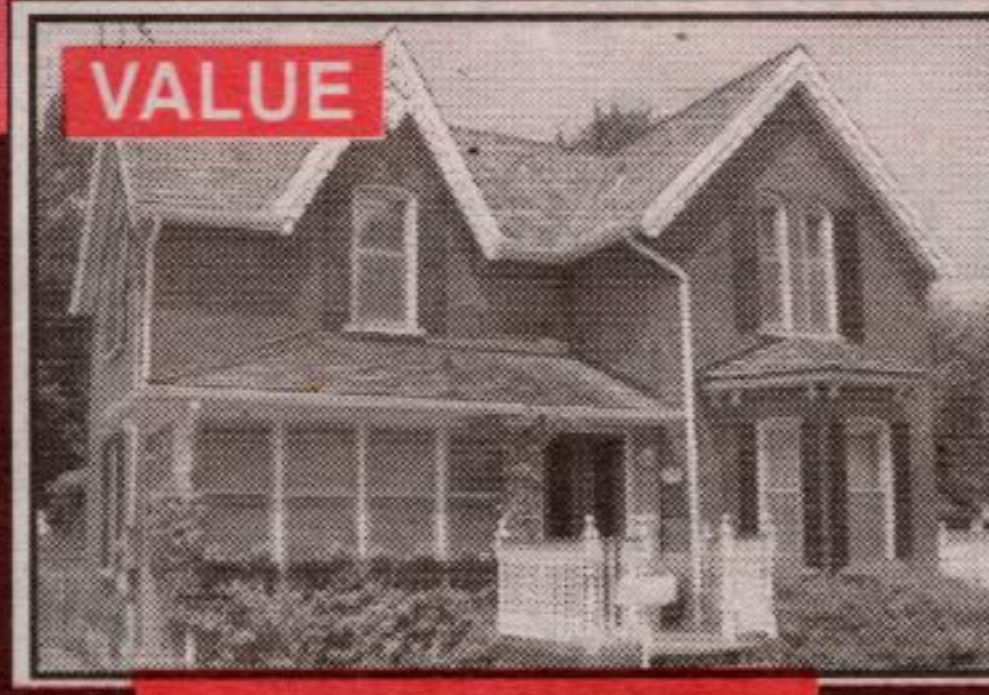
E-MAIL: [msummers@idirect.com](mailto:msummers@idirect.com)

CALL MARTHA SUMMERS FOR A FREE MARKET EVALUATION

CALL MARTHA SUMMERS FOR A FREE MARKET EVALUATION



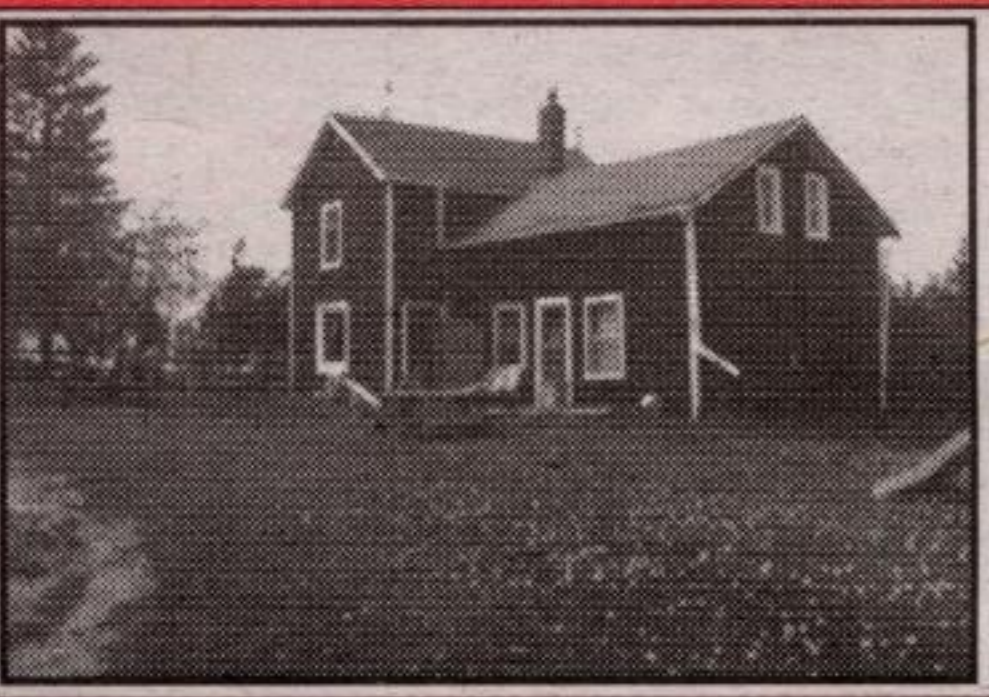
**NEW**  
**26 ACRE RETREAT LOG HOME - STONE BARN \$419,000**  
 Wonderful 26 acres, spring fed pond, wooded yet open and only 10 minutes to the Georgetown "GO". Quaint round log 2 bdrm home with stone fireplace, dining room, pine floors, 24 x 40 stone 2-stall barn/garage with storage loft. Close to Bruce Trail. **Martha Summers\*** 518-31



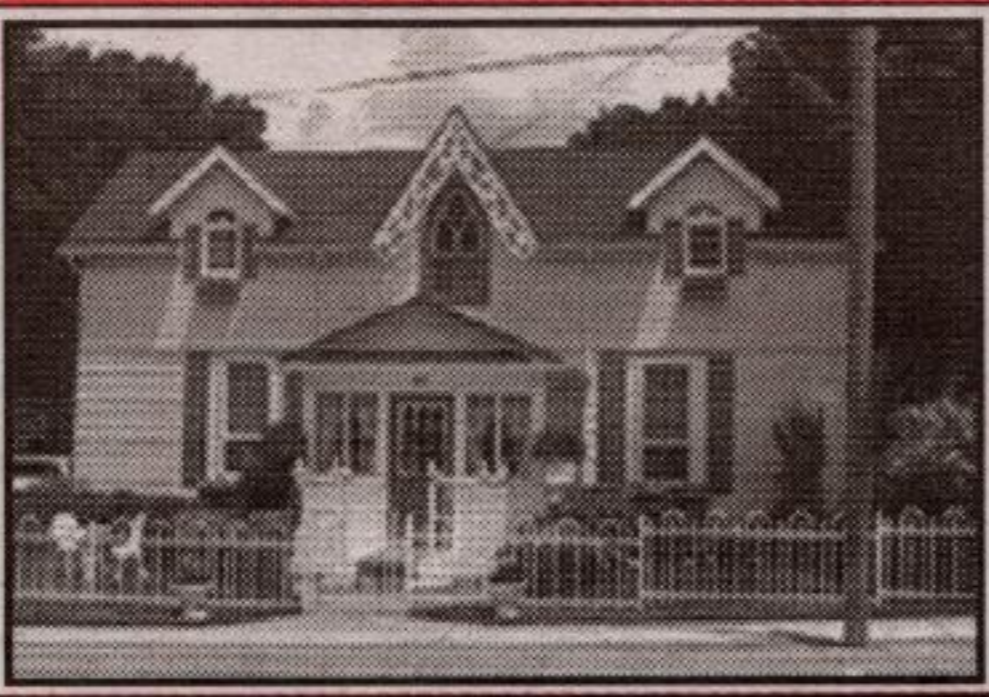
**VALUE PLUS \$236,000**  
 Original and restored charm, large eat-in kitchen, formal parlour, dining room, pine floors, high ceilings, quiet street. **Martha Summers\*** 02-412-9



**NEW GREAT BRAMPTON LOCATION \$210,000**  
 3 bedroom freehold row home, 1 car garage, fenced yard, close to shopping centre and public bus route. Better hurry!! **Martha Summers\*** 02-548-19



**THE FARM OVERLOOKING HOCKLEY \$359,000**  
 Wonderful 68 acres - recently cleared and planted fields, plank fencing, 2 road frontages, decorative stone. Original 3 bdrm character farmhouse. Renovate or build overlooking the valley. **Martha Summers\*** 315-99



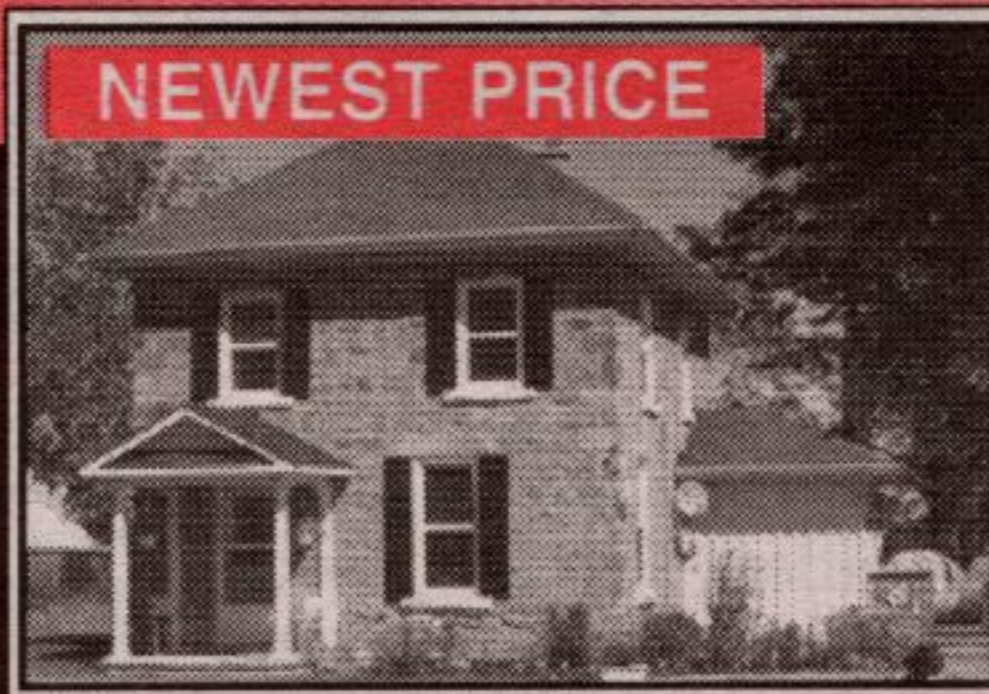
**COMMERCIAL OR PRIVATE**  
 Wonderful charm. Amazing upgrades, huge mature backyard with inground pool, 3 bedrooms plus 2 bedroom apartment. \$269,000. **Martha Summers\*** 489-91



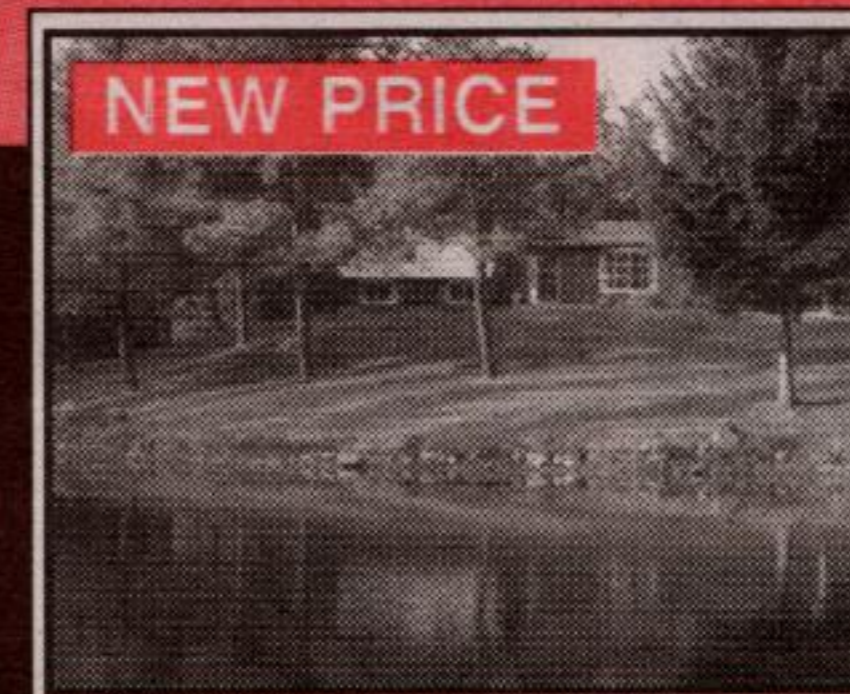
**CALEDON - MINUTES TO DEVIL'S PULPIT**  
 Beautiful property - long views, "seconds" to Devil's Pulpit. Lovely updated 3 bedroom bungalow, huge oak country kitchen with walkout to patio. Stone fireplace with insert in family room. \$389,000. **Martha Summers\*** 538-60



**NEW PRICE WOODED WONDERLAND**  
 Wonderful mature hardwood, open sun filled spaces and an architecturally unique home with lofted rooms, hardwood floors, stained glass and walkouts at various levels to a sundeck or overlooking pool or the great yard. Situated in a prestigious area close to golf, skiing, the Bruce Trail and horseback riding. \$565,000. **Martha Summers\*** 376-60



**NEWEST PRICE STONE CHARM GLEN WILLIAMS \$279,000**  
 Superb quality, living, dining, kitchen, all open enjoying deep set windows, hwd floors, mn. flr. laundry, master suite with vaulted ceilings, full ensuite, walk-in closet, 1/2 acre. **Martha Summers\*** 483-31



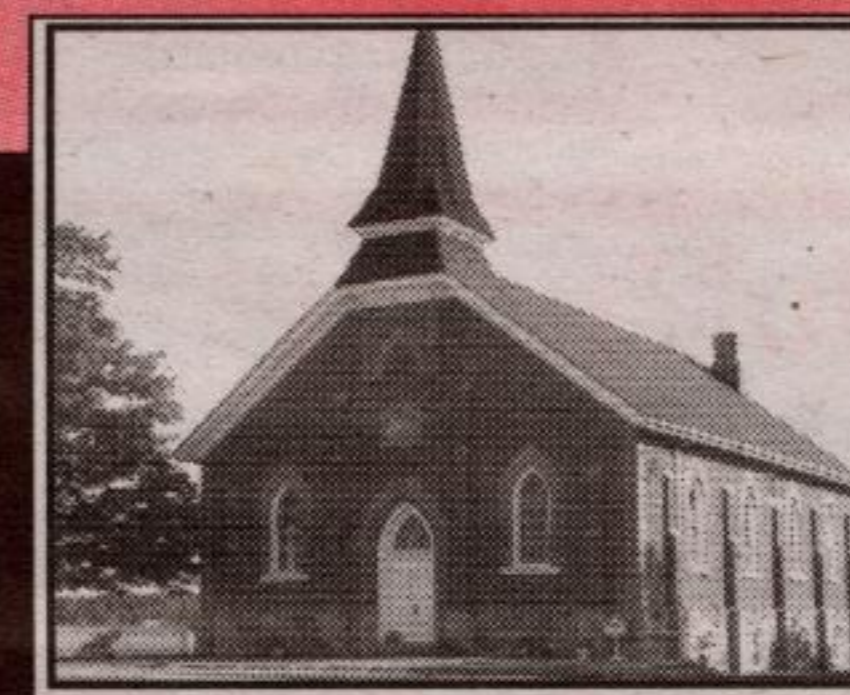
**NEW PRICE WALK IN YOUR OWN PARK**  
 Superb 1.9 acres, spring fed pond with trout, 3 bedroom, family room walkout to patio, double garage, separate single garage. Minutes to "GO". \$329,000. **Martha Summers\*** 501-99



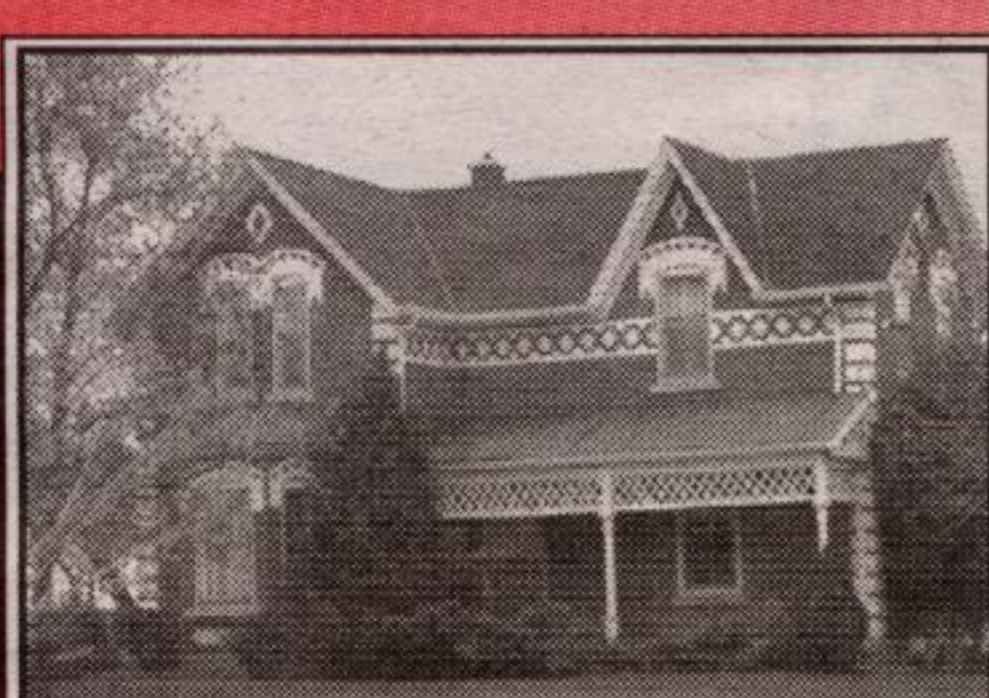
**2 HOMES - 25 ACRES - PRIVACY**  
 Country 4 bedroom home with fir beams, fireplaces and lots of charm, separate 3 bay garage with finished loft above suitable as self contained 3 bedroom apt. or home office space with private access. Inground pool, spring fed pond, rolling land private and treed, suitable for couple of horses. Very Special at \$599,000. **Martha Summers\*** 02-209-91



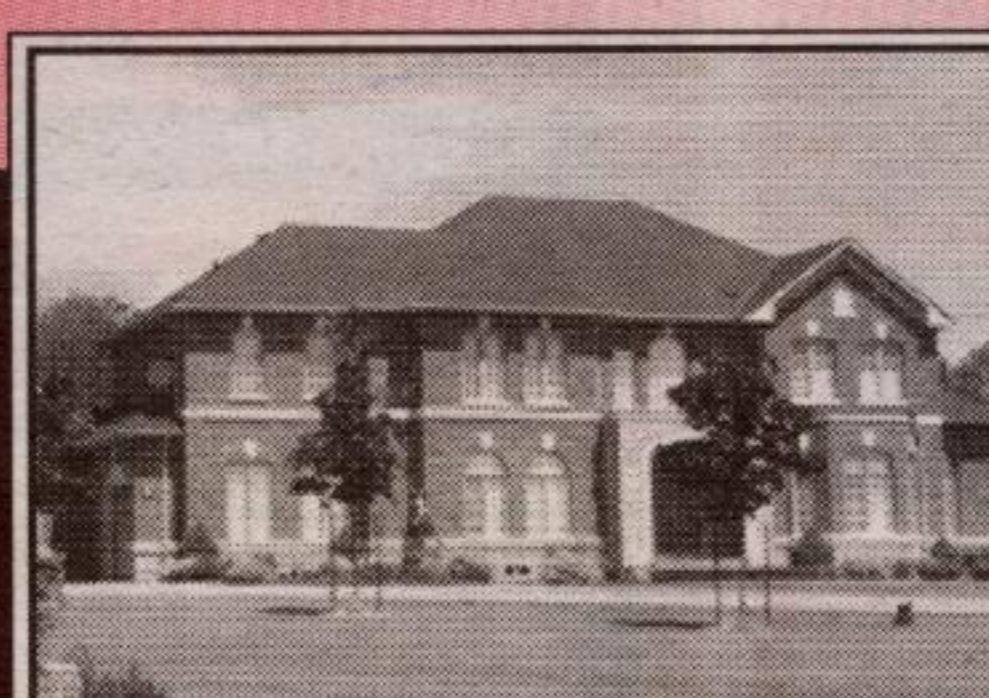
**NEW PRICE PERFECTION 5 MINUTES TO 401 \$357,900**  
 Super 1 acre in great location with tons of upgrades. Fabulous pool and decking just completed, walkout basement with second kitchen, hardwood floors, large kitchen and a 2 car garage. Hurry this is a great one. **Martha Summers\*** 440-31



**A CHURCH A HOME**  
 Superb restoration of the "Bethel" church into an incredible home. True cathedral ceilings, original hardwood flooring, stained glass windows. Open concept with flair and charm. 3 bdrms, 2 bathrooms. \$379,000. **Martha Summers\*** 02-514-91



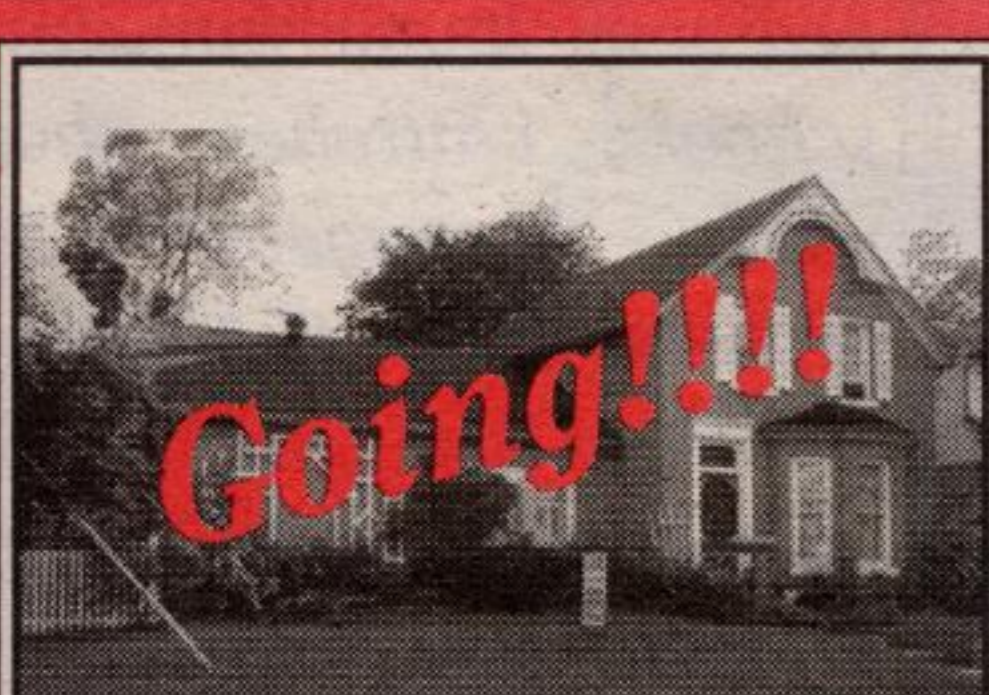
**90 ACRE FARM \$650,000**  
 Special century 4 bedroom Victorian farmhouse with all the original charm and character on 90 fabulous acres with wonderful views and sunsets, workable fields, hardwood bush, drive shed, barn. Minutes to Erin Village. **Martha Summers\*** MS02-320-91



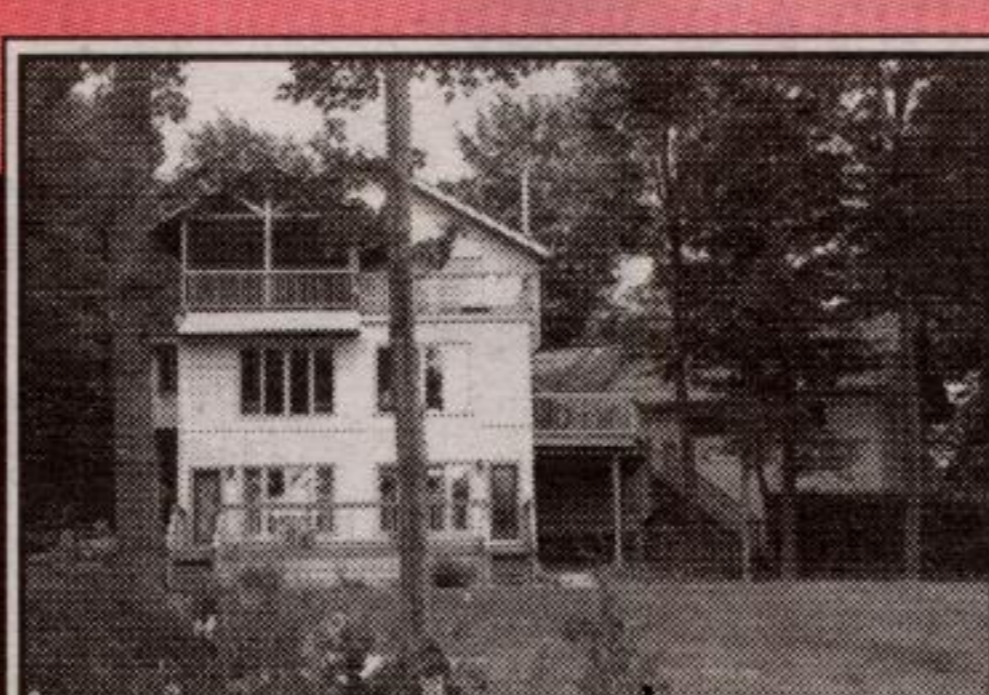
**ALL THE BELLS AND WHISTLES \$799,000**  
 Incredible 3+ acres backing onto woods - 4,000 + sq. ft. with approx 2,000 sq. ft. finished lower level. 7+ bedrooms, 5 bathrooms, sunfilled main level office, 2 fireplaces, hardwood floors, ceramics, inground pool, hot tub, night lighting, 3 car garage plus many more upgrades. Min. to 401. **Martha Summers\*** MS02-239-31



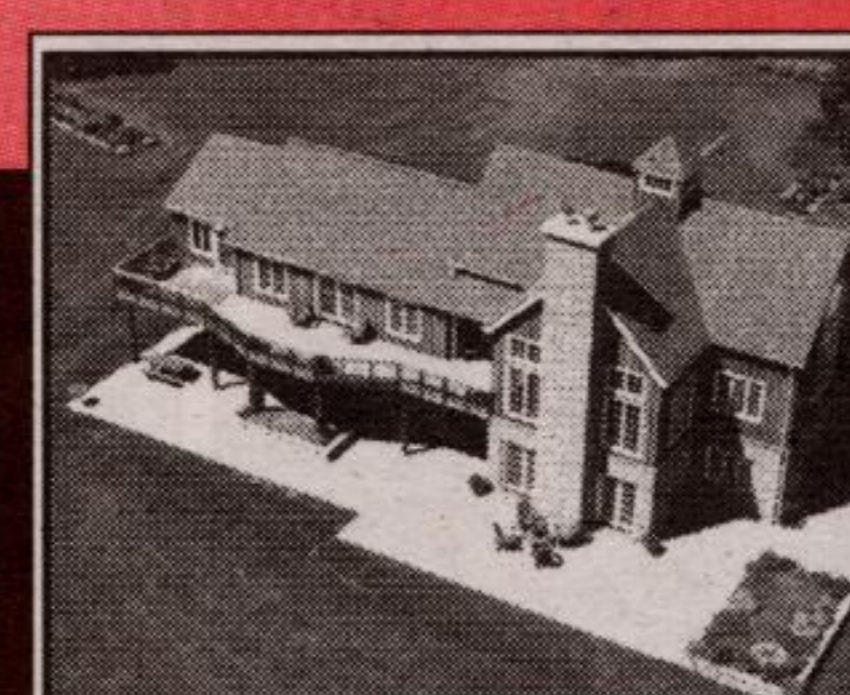
**HALTON 85 ACRE FARM \$749,000**  
 Totally renovated with quality, gently rolling farmland, huge pond with island, large barn, drive shed, separate garage, separate office building, airplane hanger, minutes to Georgetown on paved road. Location and Value. **Martha Summers\*** 480-31



**GREAT SINGLE FAMILY OR WITH IN-LAWS**  
 Lots of original character and all the upgrades. Oak floors, high ceiling, recent kitchen plus more. In-law suite with separate yard and entrance. Large deck, mature landscaped lot, walking distance to all amenities. \$229,000. **Martha Summers\*** MS02-230-99



**CORPORATE RETREAT \$1,450,000**  
 Spectacular 23 acres, woods, water, tennis and absolute privacy just south of Belfountain. Stone and wood home with incredible vistas from every room. Indoor pool, 5 bdrms, 6 baths, floor to ceiling stone fireplaces, maple kitchen, hardwood flrs. Separate 4 bay gar. **Martha Summers\*** 433-30



**COMPLETE FOR COUNTRY LOVERS**  
 100 acres, 3 stocked ponds, woods, approx. 5600 sq. ft. finished on 3 levels with cathedral ceilings, pine floors, exposed timbers. Stunning!! Horse barn with Beatty stalls, 30x60 insulated garage, 2 loafing barns. 10 min. to Georgetown "GO" train. \$1,500,000. **Martha Summers\***



9661 27 SIDEROAD, ERIN



5674 2ND LINE, ERIN



16797 KENNEDY ROAD, CALEDON



20285 WILLOUGHBY RD., CALEDON



12554 HERITAGE ROAD, CALEDON

LAND LAND LAND LAND LAND LAND LAND LAND LAND

1. **Balfinad** - 4.64 acres, treed, paved road, \$164,000
2. **Terra Cotta** - 4.9 acres - inside hamlet - rolling - mixed bush - views. \$299,000.
3. **Georgetown** - Country close to "GO". 9 acre, the well is in. \$148,900.
4. **Investment Opportunity \$324,900** - 1.2 acres south end of Village with approx. 6000 sq. ft. useable space partially in part of. Two road frontages, retail space, workshop space, excellent opportunity. Call for details. **Martha Summers\*** 02-327-91
5. **Caledon** - 15 acres south of Belfountain, gently rolling, close to skiing, golf and riding. \$249,000.
6. **Balfinad** - 1.4 acres, treed lot, paved road, \$129,000
7. **Erin** - .6 acres, paved road, \$110,000
8. **Erin** - Great Lot, Great Price - Build your dream on 1/2 acre lot surrounded by country. Close to Hillsburgh and Orangeville, \$79,900
9. **Caledon** - 1 acre south of Inglewood across from golf course. Mature trees, ravine, \$200,000
10. **15 Acres South of Belfountain** - 175 ft. frontage, close to skiing and golf. Desirable Area. \$239,900.
11. **Desirable Glen Williams** - 1/2 acre, town water, gas, \$169,000.
12. **South Erin** - 18 acres, great rolling, nicely treed, entrance, permit, \$200,000.

CALL MARTHA SUMMERS FOR A FREE MARKET EVALUATION CALL MARTHA SUMMERS FOR A FREE MARKET EVALUATION