



GORD* & MICHELE* DAWE
1-888-656-4348

"Give Us A Minute Of Your Time And We Will Give You Years of Experience"

Gordon B. Dawe*
Sales Rep.



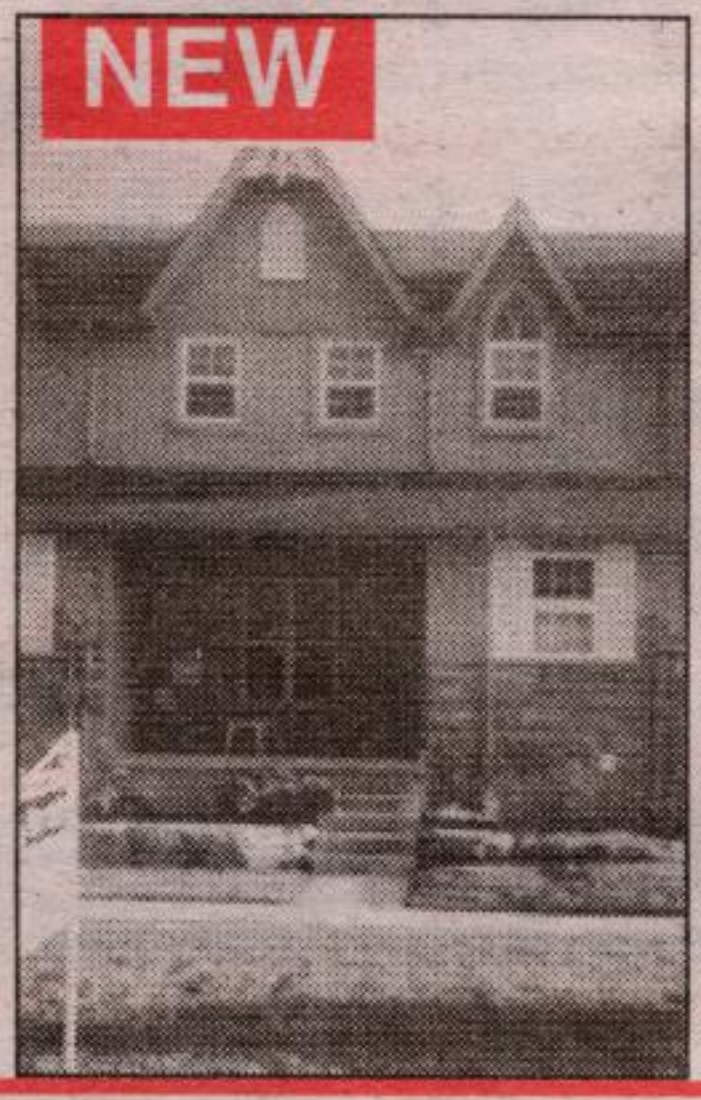
Blue Springs Realty (Halton) Corp.



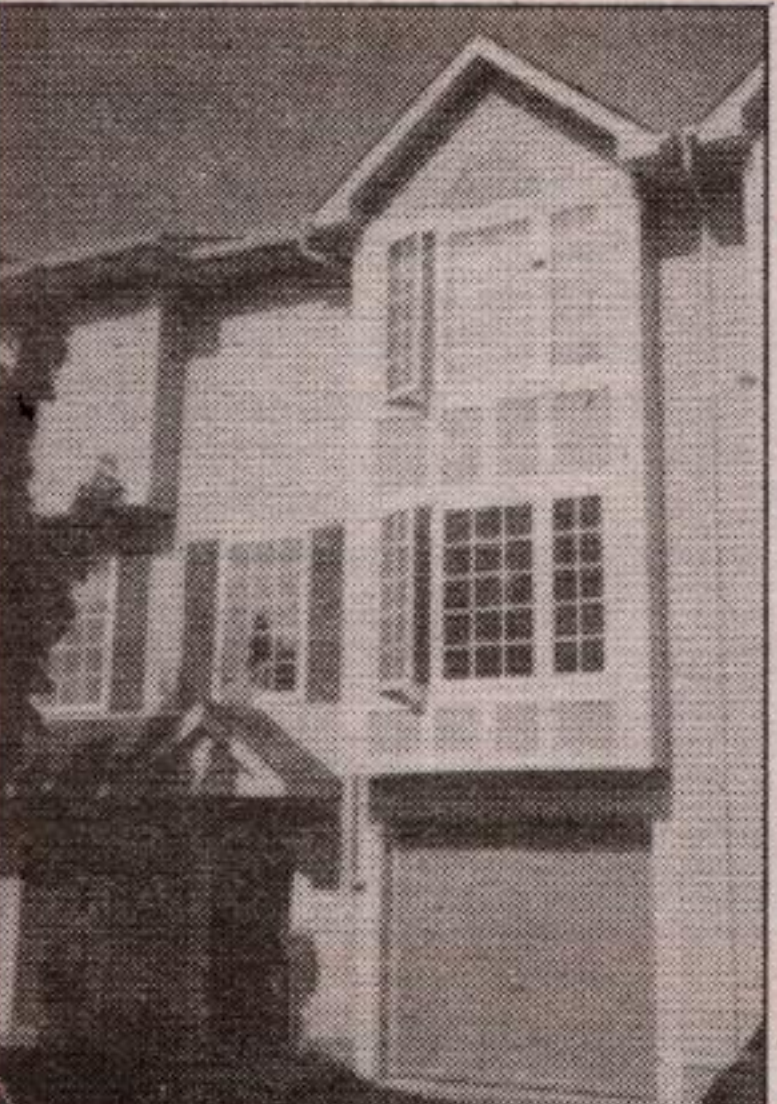
Michele Dawe*
Sales Rep.



NEW
EXECUTIVE CHARLESTON HOME - \$259,900
 Welcome to Adult Lifestyle in this well maintained semi-detached home. Many upgrades. Ceramic & hardwood floors, oak kitchen with breakfast bar, ceramic backsplash, built-in appliances & pot lighting. Living room & dining room with hardwood floors, cathedral ceilings, gas fireplace & walkout to backyard. Main floor laundry. Master bedroom loft overlooking living room & dining room. Central air, central vac. 3 washrooms. A must to see! Michele* or Gord* Dawe.



NEW
BRIGHT SPACIOUS TOWNHOUSE IN PRESTIGIOUS ROCKWOOD RIDGE \$174,900
 Across from wooded area. Previous model home. Covered front porch. Ceramic & hardwood floors. California ceilings. Cosy living room with gas fireplace & decorative pillars, main floor washroom. Walkout from dining room to backyard. Kitchen with light oak cabinets. Master bedroom with walk-in closet. Single detached garage. A pleasure to show. Michele* or Gord*.



EXCELLENT OPPORTUNITY FOR 1ST TIME BUYERS - \$129,000
 Minutes to Rockwood Conservation (backing onto wooded area). 3 BR Townhome in Village of Rockwood. Bleached oak kitchen, separate dining room area, bright, spacious living room, walk-out from laundry room to private back patio area. Single attached garage with extra storage space. Please call Michele* or Gord*.



CHEAPER THAN RENT 2 BEDROOM CONDO IN GUELPH \$82,900
 Well cared for 2 bedroom unit with balcony minutes to Crane Park. Great south end location. Easy access to University.



1880 MAJESTIC STONE HOME IN MILTON - \$549,900
 Century home on large treed lot in town of Milton. Classic front porch, country kitchen, formal dining room with wood fireplace, hardwood floors. 10' ceilings, plaster construction, formal living room with bay window, 4 bedrooms, music/office. Detached 2 car garage, ample parking. Close to all amenities. Possible professional office.



BRICK BUNGALOW ALMOST NEW! \$299,900
 Many upgrades - extra large windows, large eat-in family kitchen, walkout from family room to deck. California and tray ceilings. 3+2 bedrooms. Professionally finished lower level. 3 washrooms, room for the family! Please contact Michele* or Gord*.



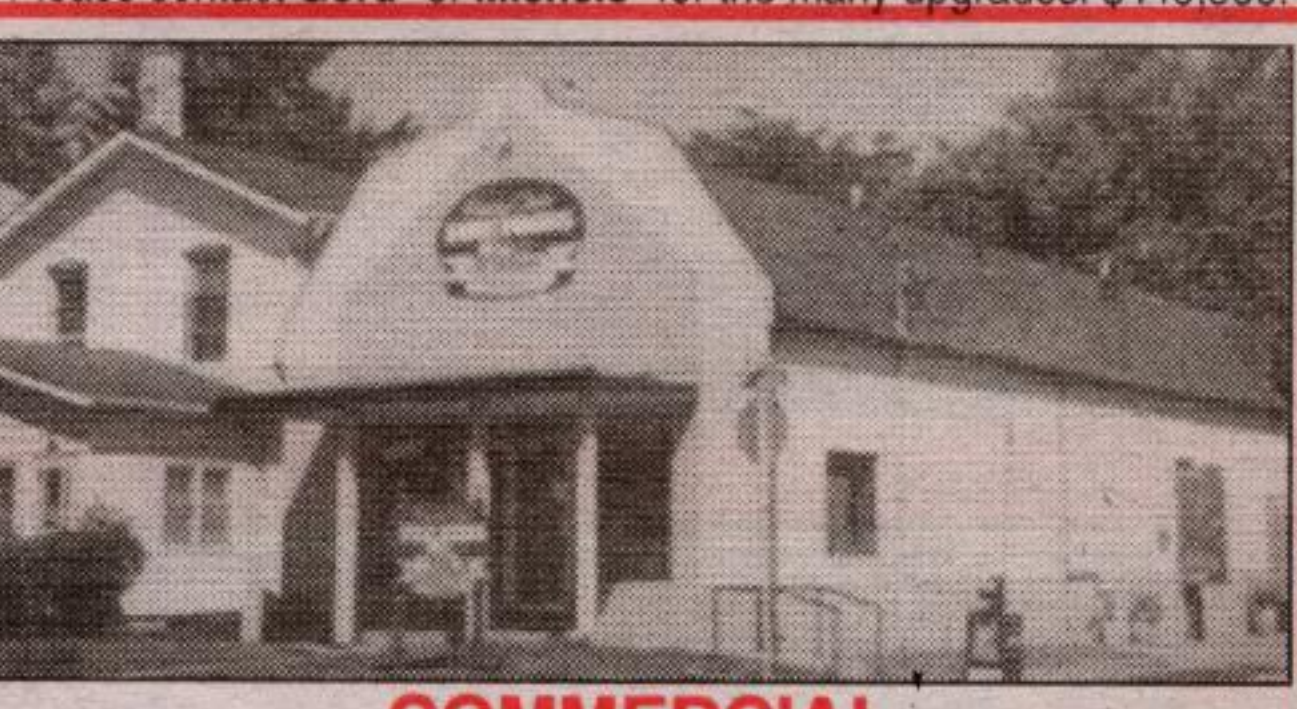
HISTORIC STONE HOME \$349,900
 Large mature landscaped lot. Presently legal non-conforming 3 plex. Main home features ceramic foyer, 3 bedrooms, living room with gas fireplace and oak mantle. Dining room with hardwood floors, wainscoting and bay windows, 9'6" ceilings, updated oak kitchen, deep window sills, large baseboards. Additional 2-2 bedroom apartments presently rented. Ample parking. Please call Gord* for details.



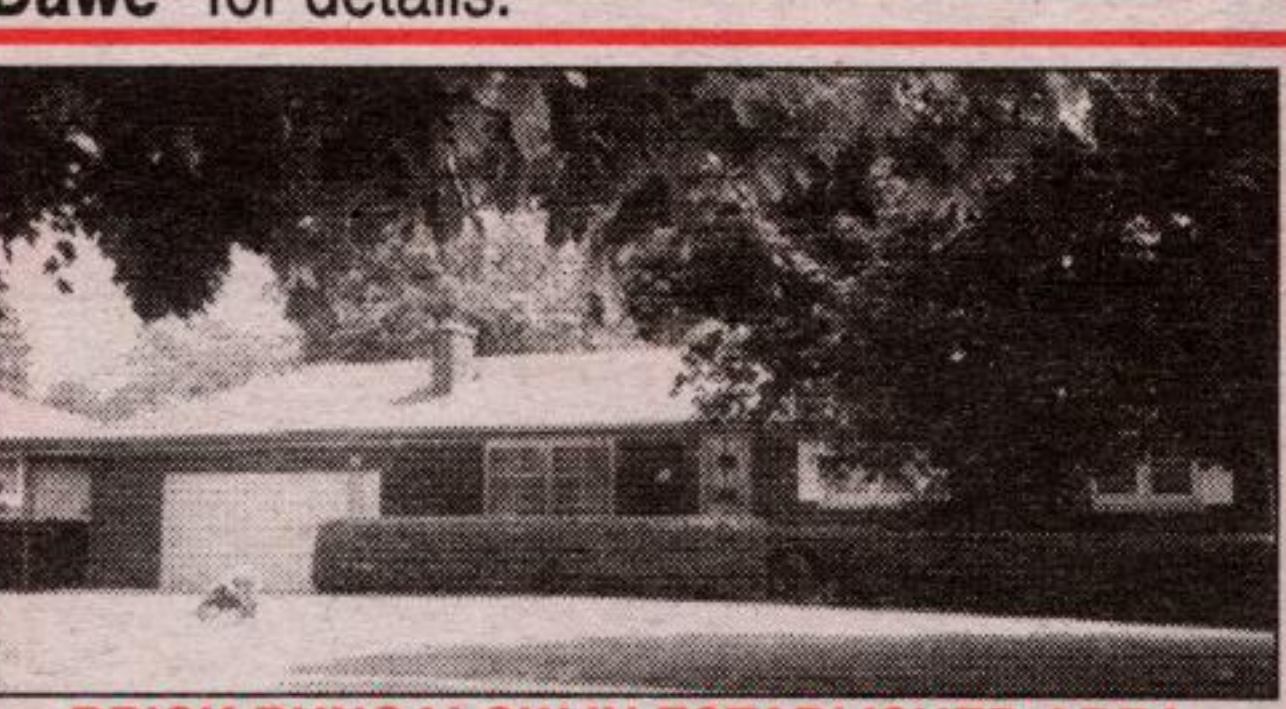
COUNTRY COMFORT - BRICK BUNGALOW ON 42.5 ACRES \$449,900
 Cosy livingroom w/woodburning insert, eat-in kitchen, diningroom with walkout to Florida room with hot tub. Insulated double car garage with walk-in to Florida room, 3 bedrooms. Totally renovated lower level with second kitchen, 3 pc. washroom, recreation room with woodburning insert (could easily accommodate 4th bedroom). Walkout from kitchen to new patio. Updated wiring, drywall, windows. Please contact Gord* or Michele* for the many upgrades. \$449,900.



3600 SQ. FT. RETAIL SPACE
 in prime area of Acton. Please contact Gord Dawe* for details.



COMMERCIAL BUILDING, GUELPH \$249,900
 Present operation butcher/deli. Upgraded wiring, plumbing updated, stucco exterior, roof, second floor, washrooms, kitchen, office & store front. Possible apartment conversion on second floor. Please call Gord*.



BRICK BUNGALOW IN ESTABLISHED AREA CLOSE TO UNIVERSITY OF GUELPH
 Well cared for home on large mature lot minutes to desirable Guelph University area. Hardwood floors under carpeting in LR, DR & bedrooms. Wood fireplace in living room. Walkout from dining room. Eat-in kitchen. Most windows updated. Partially finished basement with 3 pc washroom. \$274,900.



NEW PRICE
WELL CARED FOR BRICK HOME \$208,900
 Desirable Lakeview area. Quiet cul-de-sac, updated doors & windows, main bathroom. Dining room with built-in oak bookcase, oak bar. Walkout to 3 tiered deck, large fenced yard & inground heated pool (16'x32'). Attached garage. Many upgrades. Close to Prospect Park & Fairy Lake.

MIKE ADAMS*

*Sales Rep.



BLUE SPRINGS REALTY (HALTON) CORP.

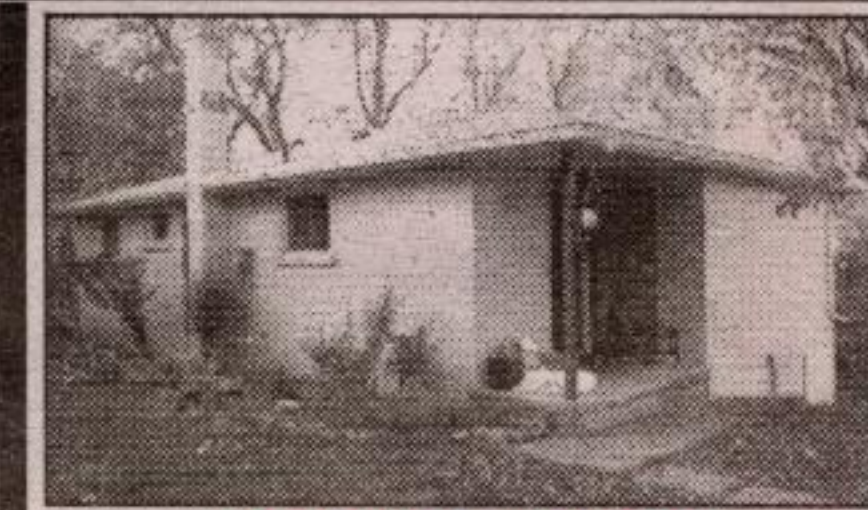
905-877-5211



OPEN CONCEPT & HUGE BACKYARD
 Popular Fernbrook 'Amesbury' in Georgetown South. Located on a super street, quiet cres., great for kids. Open concept home w/ huge pie-shaped lot. Great backyard, fully fenced. You'll love to entertain here. Eat-in kitchen area w/ breakfast bar, extra pantry. Great model. Super yard w/ best location. Quick closing, if you want.
\$315,000



NEW PRICE
10 ACRE HORSE FARM
 with horse barn, 8 horse stalls & 7 pony stalls, fenced 65 x 140 sand ring, 3/8 mile track, barn has loft for hay storage, boundary fencing, fenced paddocks. Working auto garage/shop with extra height to accommodate 2 sep. hoists. 3 bdrm bungalow with fin. basement, central vac and updated kit. flooring. If you have a horse you will want this property. Come and have a look - what have you got to lose?
\$329,000



LOOK WHAT YOU GET Creek (with fish), Dead end road, Conservation area on side ...
 Also, 3 pc. W/R w/shower, broadloom, FP. Very scenic & private. Steps to school & shopping. Upgraded roof, eavestroughs, soffits, fascia, entrance doors, windows (except bay). Insulated attic. Cold room. 1/2 acre treed lot overlooks Credit River, sides onto Woollen Conservation, pool and river in yard. Last house on dead end street. Gas fireplace and water tank owned.
\$225,000

RE/MAX • RE/MAX • RE/MAX • RE/MAX • RE/MAX

RE/MAX BLUE SPRINGS REALTY (HALTON) CORP.

Acton Office **519-853-2086**
 Toll Free **1-888-833-1945**

Heather (Whiting) Scotland**
 Leigh Whiting**
 Associate Brokers

MEMBER OF RE/MAX 100'S CLUB

RE/MAX REALTOR®

Heather & Leigh support the Children's Miracle Network

Visit Us at www.HeatherAndLeigh.com for full feature sheets & colour pictures

SOLD

LOVELY PHASE III - \$129,900
 This 3 bedroom 1-1/2 bath home features an elegant white kitchen with new counters and laminate floating floor, gas fireplace and slider walkout in the living room and professionally finished rec room. It's ready to move into!
 MLS#W152136

SOLD

CUSTOM CAPE COD - \$274,900
 This 3+1 bedroom brick home features formal living room and dining room, an oak kitchen with built-in table and walkout to deck with adjoining family room, main floor laundry and finished basement on a mature .65 acre lot in a quaint hamlet setting with river and Conservation trails nearby.
 MLS#X12633

IMMACULATE "BOVIS" BUNGALOW - \$224,900
 This well maintained 3 bedroom one owner home with eat in kitchen, upgraded neutral broadloom in the living room and dining room. Finished rec room with a fireplace. Double car garage and fenced mature treed lot.
 MLS#W142901

GREAT FAMILY HOME - \$229,900
 This immaculate 4 bedroom 2 storey home features sunny bay windows in the living & dining rooms and master bedroom; country kitchen with adjoining sun room; wood stove in rec room and a double garage, set on a large corner lot with lovely rock and perennial gardens and privacy fenced yard.
 MLS#W146786

SOUTH GEORGETOWN EXECUTIVE - \$429,900
 Step into the soaring sun filled foyer and be surrounded by the calm and orderly layout of this lovely home. Sunken living room, separate dining room with cathedral ceiling, country kitchen with slider walkout to deck and adjoining family room, home office and 4 spacious bedrooms including the master with a full ensuite bathroom.
 MLS#LX1632

COOKING WITH GAS - \$299,900
 This solid 3 bedroom raised bungalow, with oak country kitchen, ceramic and oak floors, and tudor style rec room with wet bar, gas fireplace and adjoining 4th bedroom with 3 piece bath, (suitable for in-laws), sits on a half acre lot close to town on a paved road serviced with natural gas.
 MLS#W150677

2.1 ACRE LOT - \$194,900.00 & 1.6 ACRE LOT - \$189,900 - BEECH BROOKE COUNTRY ESTATES
 Build your dream home in this beautiful and prestigious country estate and get a 1/20th share of the 40 acre private conservation park with trails, ponds and a creek! These lots won't last long since the Municipal, Provincial and N.E.C. legislation have made further estates such as this impossible to create.
 MLS#W133290

MLS#W133302