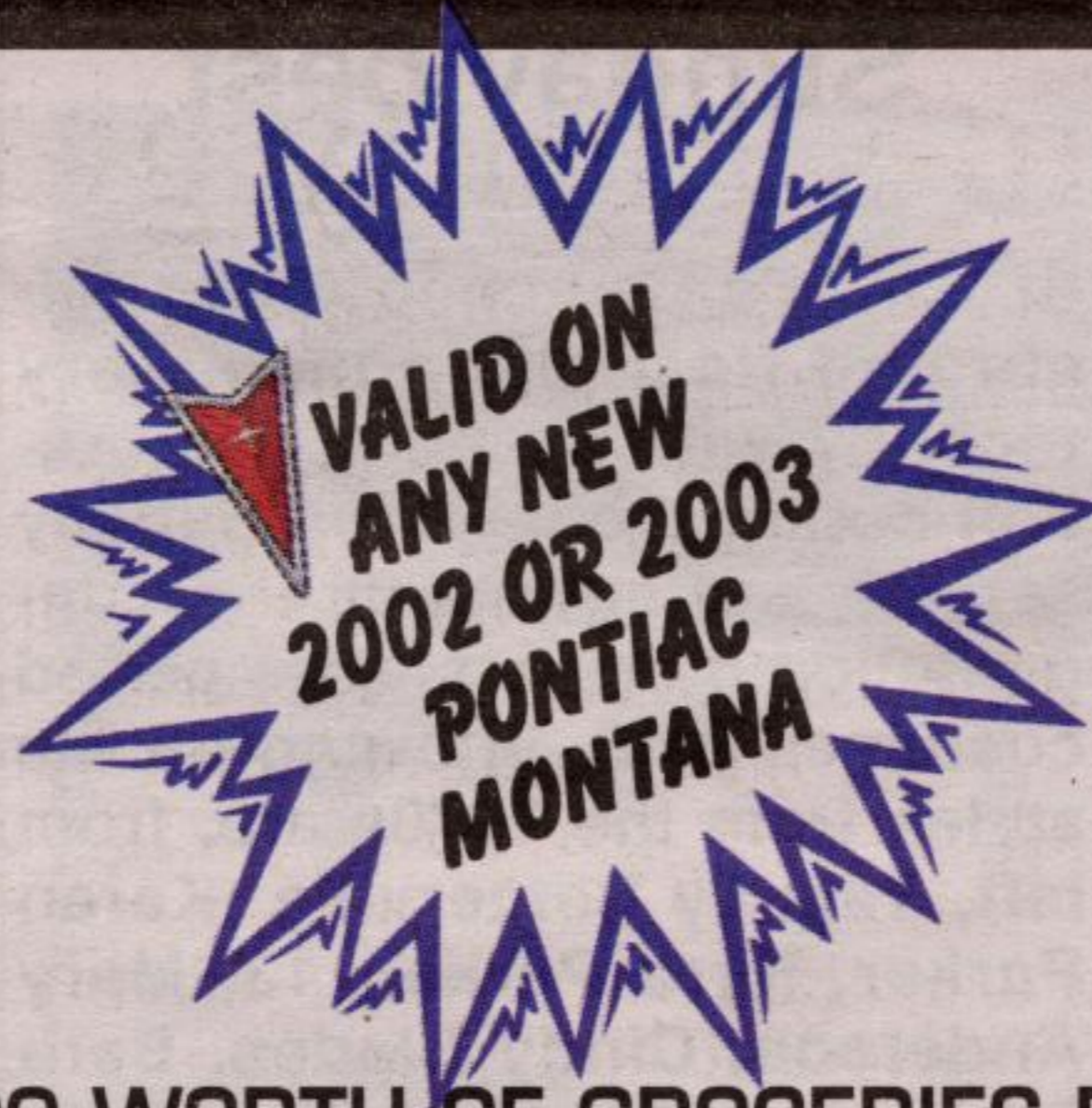
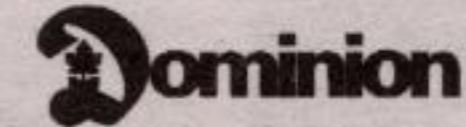


Frost
Drives Brampton



GET \$300 WORTH OF GROCERIES FOR 1¢ AT ANY A&P OR DOMINION GROCERY STORE



2002's

\$4000*
RETAIL CREDIT OR CASH PURCHASE

OR

0%
PURCHASE FINANCING



2003's

1.9%
PURCHASE FINANCING

OR
GM MAKES YOUR 1ST PAYMENT ON LEASE OR PURCHASE FINANCING

2002 wrap up

- FINAL CLEAROUT ON '02 MODELS HAVE BEGUN -
- 42 - 2002'S ARE LEFT - HURRY IN!
- 0% FINANCING AVAILABLE ON THESE MODELS O.A.C.



GM MAKES YOUR FIRST PAYMENT

ON ALL 2003 MODELS

THE CHOICE IS UP TO YOU - INCENTIVES • MODELS • GREAT VALUE!

2003'S HAVE ARRIVED

FINANCING AS LOW AS

1.9%
O.A.C.

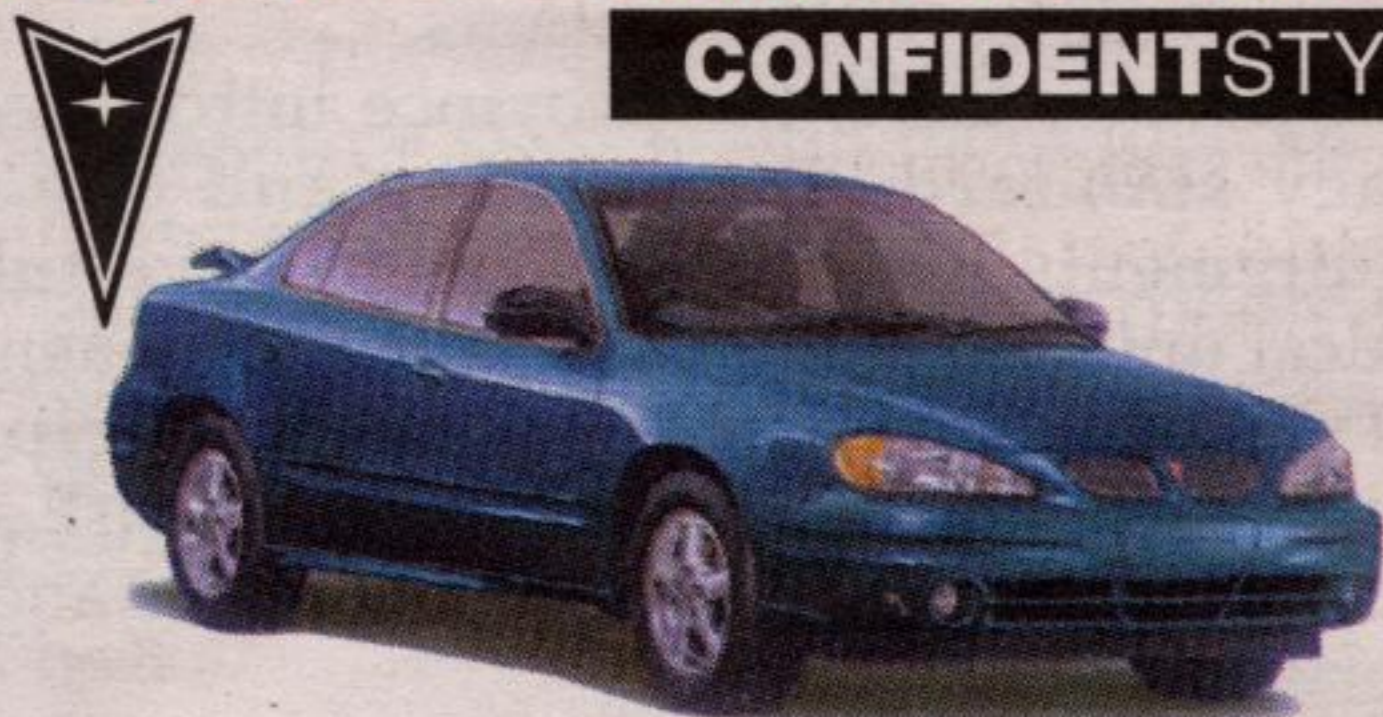
PLUS



KEEP YOUR CASH

(See Frost for complete details.)

2003 GRAND AM SE SEDAN CONFIDENTSTYLING



CASH PRICE

\$19,998*

SMART LEASE - 36 MONTHS

\$258/MTH.

\$3,115 Downpayment

+ \$845 Freight

PLUS: GM makes first payment

- 2.2 ECOTEC L4 with SFI
- 4 speed auto transmission
- air conditioning
- AM/FM RDS stereo CD
- 4 wheel independent suspension
- power door locks
- passenger lock theft deterrent
- and much more

ALL NEW FOR 2003



PONTIAC VIBE GT



SALE PRICE

\$27,298*

- Fully equipped • sunroof
- monotone appearance
- AM/FM/CD • 6 speed manual

- power windows
- power locks • keyless entry
- 16" alloy wheels



Frost

PONTIAC • BUICK • CADILLAC • GMC

(905) 459-0126

320 Queen St. E., Brampton

E-MAIL: frostpontiac@gmcanada.com



▲Best in class. Based on Transport Canada Fuel Economy Ratings. Offer available on approved GMAC purchase financing up to 48 months. *0% purchase financing does not apply to 2002, Cadillac, GMC Savana, Full size vans-cargo (non Y91 models) /cut-away, Sierra Regular and Extended Cab 2500/3500 (non C&P models), Sierra Crew Cab 2500/3500, and Sierra 3500 HD Chassis Cabs (Carryover Style). Certain exceptions apply. 0% purchase financing on approved GMAC credit only for most 2002 vehicles. Drive Away Without Paying offer does not apply to purchase financing offer. Term up to 48 months for most 2002 cars, vans, sport utilities and compact trucks. Term up to 36 months for most 2002 full-size trucks. The SMARTLEASE monthly payment and the GMAC purchase finance rate are not available with and are not calculated on the Cash Purchase Price as shown. Down payment, trade and/or security deposit may be required. Monthly payment and cost of borrowing will vary depending on amount borrowed and down payment/trade. Example: \$10,000 at 0% APR, the monthly payment is \$277.78/208.33 for 36/48 months. Cost of borrowing is \$0. Total obligation is \$10,000, license, insurance, registration, PPSA, administration fees and environmental taxes are not included, applicable taxes and administrative fees (\$175). Discounts or other incentives may be available where consumers opt for a cash purchase price offer. By selecting the purchase finance offer, consumers may be foregoing such discounts and incentives which may result in a higher effective interest rate. Offers apply as indicated to new or demonstrator 2002 models of Sunfire/Grand Prix/Century/Montana. Limited quantities of 2002 models available. Offers apply to qualified retail customers in the Ontario Pontiac • Buick • GMC Dealer Marketing Association areas only (including Ontario and excluding Northwestern Ontario). Dealer trade may be required. Dealers are free to set individual prices. Limited time offer which may not be combined with other offers and is subject to change without notice. **See Frost for conditions and details. ** GM makes first payment up to \$500 O.A.C. GM suppliers & GM employees are not eligible for this promotion.