

Police outline guidelines for gun owners

In an effort to clarify information recently released by the Canadian Firearms Centre Halton Regional Police Service is outlining the guidelines for gun owners.

In accordance with the law that came into effect in January 2001, all owners of firearms, either restricted or non-restricted, must have a valid firearms licence and all firearms must be registered by January 1, 2003.

Anyone who has restricted/prohibited firearms registered to them that were obtained before December 1, 1998 have to re-register them by the end of the year.

Anyone who owns long firearms (rifles and shotguns) have to register them by the end of the year.

For more information on firearms licences, registration of non-restricted firearms, re-registration of restricted and prohibited firearms and the ordering of forms, contact the Canadian Firearms Centre at 1-800-731-4000 or visit the Web site at www.cfc.gc.ca.

Application forms can be downloaded from the Web site or ordered by phone from the Centre.

Please recycle this newspaper



ROAD CLOSURES

On Monday, October 21st, 2002 the Council for the Corporation of the Town of Halton Hills intends to enact by-laws authorizing the temporary closure of various roads within the municipality for the purpose of the following community events:

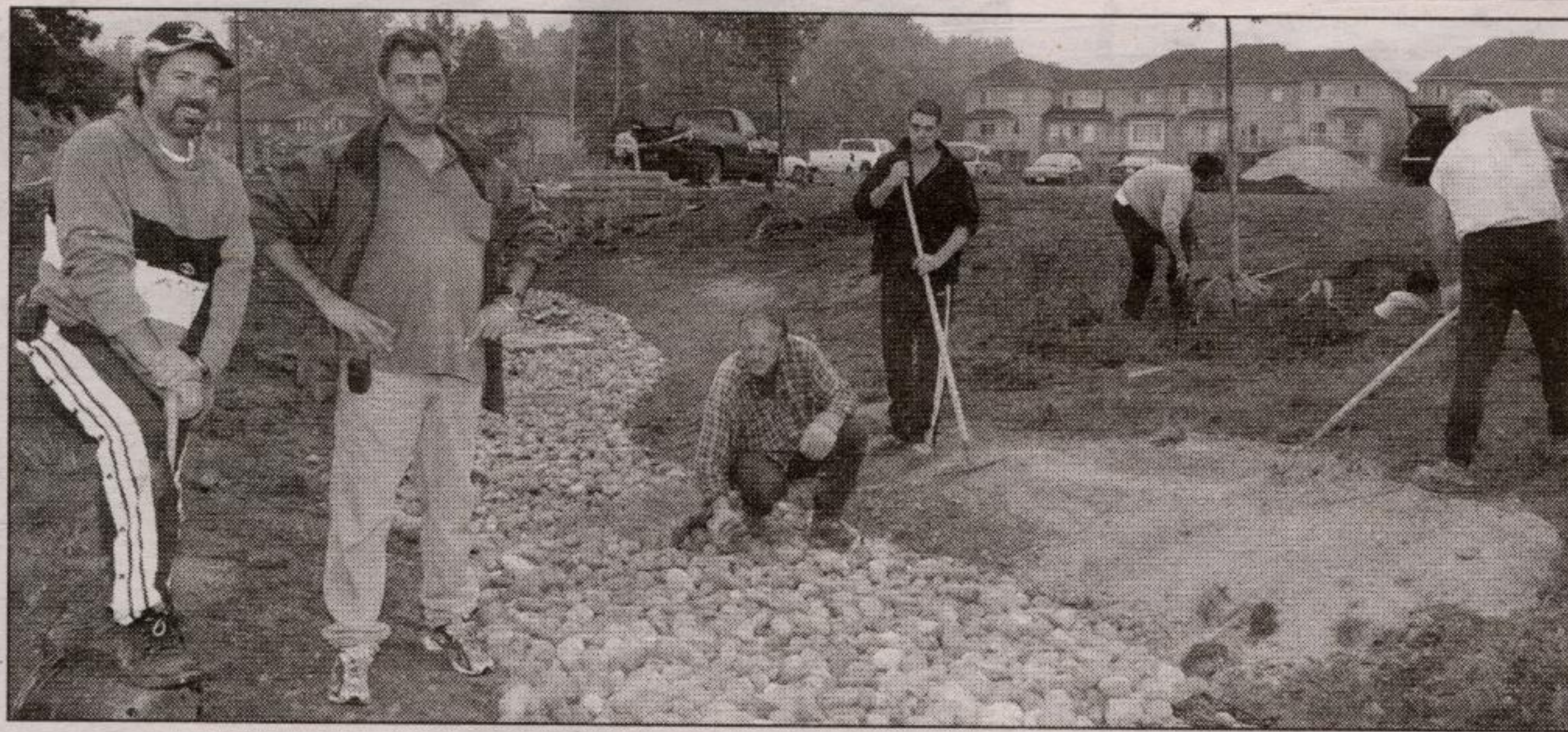
TEMPORARY ROAD CLOSURES DUE TO EVENTS

A. REMEMBRANCE DAY PARADE - Glen Williams
 Sunday, November 10, 2002
 from 12:00 p.m. to 12:30 p.m.
 From Glen Williams School, West on Main St. to Confederation St. to the Cenotaph - and return same route.

REMEMBRANCE DAY PARADE - Georgetown
 Sunday, November 10, 2002
 from 2:30 p.m. to 3:30 p.m.
 From Market St. to Church St. to Main St. to James St. to Cenotaph - return: Charles St. to Mill St. to Market St.

The Council Meeting will commence at 6:30 p.m. on Monday, October 21st, 2002 in the Council Chambers, Civic Centre, 1 Halton Hills Drive. At this meeting, Council will hear, in person, any person who claims to be prejudicially affected by the said by-law and who applies to Kelly Withers, Legislative Assistant at 905-873-2601, ext. 2330, before the Council Meeting.

1 Halton Hills Dr.,
 Halton Hills, ON L7G 5G2
 Tel.: 905-873-2600
 Fax: 905-873-2347

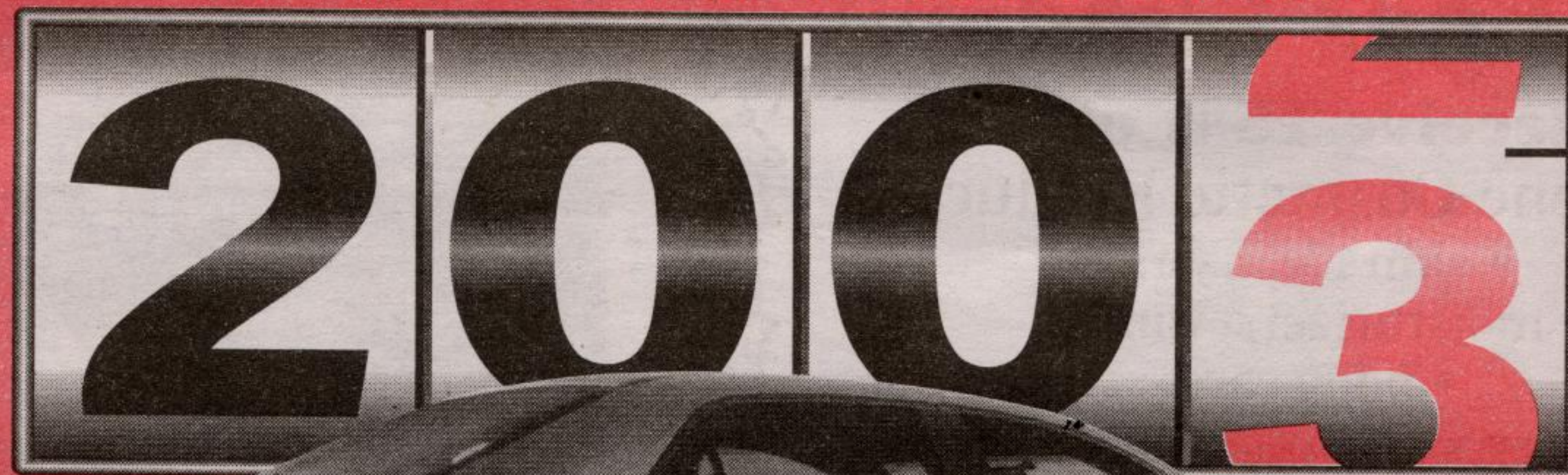


Pitching in

Due to the generosity of a local landscaper, the Old Seed House Garden project is progressing quickly as Eagle Landscaping owner Jose Lima (second from left) and his general manager Dan Silva (left) oversaw a major operation last week. The duo brought their entire crew in to advance Phase Two of the park plan. The donated work and material was valued at \$50,000.

Photo by Ted Brown

Honda: Leaders in Value!



THE ATTRACTION IS POWERFUL!

INTRODUCING THE ALL-NEW ACCORD ACCORD SEDAN LX-G \$26,000 MSRP*

• 160-hp, 2.4 Litre i-VTEC™ 4-Cylinder Engine • 5-Speed Automatic Transmission • CFC-Free Air Conditioning with Micron Air-Filtration System • Power Windows, Door Locks and Heated Door Mirrors • Anti-Lock Braking System (ABS) • 4-Wheel Double-Wishbone Suspension • Dual-Stage Front Airbags • Front Side Airbags • Security System • Remote Keyless Entry with Power Window Control • AM/FM/CD Audio System with 6 Speakers • Tilt and Telescopic Steering Wheel • Cruise Control • Front and Rear Stabilizer Bars • 15" Wheels with Full Wheel Covers • & More...

OR LEASE IT FOR \$358 ✓ per month for 48 months, WITH \$4,216 DOWN FREIGHT & P.D.E. INCLUDED

LEASE IT FOR **\$318** ✓ per month for 48 months, WITH \$3,904 DOWN FREIGHT & P.D.E. INCLUDED

ACCORD SEDAN EX-L \$29,500 MSRP* **OR LEASE IT FOR \$358** ✓ per month for 48 months, WITH \$4,216 DOWN FREIGHT & P.D.E. INCLUDED

All the features of the Accord Sedan LX-G, Plus: • Power Moonroof • Leather-Trimmed Interior • Leather-Wrapped Steering Wheel and Shift Knob • Heated Front Seats • 6-Disc In-Dash CD Changer with Audio Anti-Theft • Steering Wheel Mounted Audio Controls • 16" Alloy Wheels • Rear Disc Brakes • Dual-Zone Automatic Climate Control System • Driver's Seat 8-Way Power Adjustment and Adjustable Lumbar Support • Outside Temperature Gauge • Centre Console Trim.

ACCORD SEDAN LX-V6

\$29,000 MSRP*

OR LEASE IT FOR **\$358** ✓ per month for 48 months, WITH \$3,907 DOWN FREIGHT & P.D.E. INCLUDED



All the features of the Accord Sedan LX-G, plus:

- 240-hp, 3.0 Litre 24-Valve VTEC™ V6 Engine
- 16" Wheels with Full Covers
- 6-Disc In-Dash CD Changer
- Audio Anti-Theft
- Steering Wheel Mounted Audio Controls
- Traction Control System with Electronic Throttle Control
- 4-Wheel Disc Brakes
- Driver's Seat 8-Way Power Adjustment
- Trunk Lid Lining
- Rear Disc Brakes

ACCORD SEDAN EX-V6 \$32,500 MSRP*

All the features of the Accord Sedan LX-V6, plus:

- Power Moonroof
- Leather-Trimmed Interior
- Leather-Wrapped Steering Wheel and Shift Knob
- Heated Front Seats • Alloy Wheels
- Dual-Zone Automatic Climate Control System
- Homelink™ Garage Door Opener
- Driver's Seat Adjustable Lumbar Support
- Outside Temperature Gauge
- Passenger Seat, 4-Way Power Adjustment

LEASE IT FOR **\$398** ✓ per month for 48 months, WITH \$4,647 DOWN FREIGHT & P.D.E. INCLUDED

CIVIC SEDAN DX-G

\$18,600 MSRP*

OR LEASE IT FOR **\$228** ✓ per month for 48 months, WITH \$2,878 DOWN FREIGHT & P.D.E. INCLUDED



- 115-hp, 1.7 Litre Engine
- 4-Wheel Independent Suspension
- 4-Speed Automatic Transmission
- Front and Rear Stabilizer Bars
- Driver's and Front Passenger's Dual-Stage Front Airbags
- 60/40 Split Fold-Down Rear Seatbacks
- Audio Anti-Theft

- AM/FM Stereo Audio System with CD and 4 Speakers
- Immobilizer Theft-Deterrent System
- 14" Wheels
- Tachometer
- Adjustable Rear Headrests
- CFC-Free Air Conditioning with Micron Air-Filtration System
- Power Door Locks
- Keyless Remote Entry • & More...

CIVIC SEDAN LX \$20,400 MSRP*

All the features of the Civic Sedan DX-G, plus:

- Power Windows and Power Heated Door Mirrors
- Anti-Lock Braking System (ABS)
- Cruise Control
- 15" Wheels
- Centre Console Armrest with Storage Box
- Driver's Seat Height Adjustment • & More...

LEASE IT FOR **\$248** ✓ per month for 48 months, WITH \$3,160 DOWN FREIGHT & P.D.E. INCLUDED

HONDA PILOT EX

\$41,000 MSRP*

OR LEASE IT FOR **\$478** ✓ per month for 48 months, WITH \$6,342 DOWN FREIGHT & P.D.E. INCLUDED



- 240-hp, 3.5 Litre 24-Valve V6 VTEC™ Engine
- 5-Speed Automatic Transmission
- Air Conditioning (CFC-Free) with Separate Front and Rear Temperature Controls
- Automatic Climate Control with Micron Air Filtration
- Power Windows and Door Locks
- Keyless Remote Entry • 16" Alloy Wheels • ABS
- AM/FM Stereo with CD and Cassette Player with 7 Speakers
- Steering Wheel Mounted Audio Controls
- Audio Anti-theft • 4-Wheel Independent Suspension
- VTM-4 Four-wheel Drive System
- Driver and Front Passenger Front and Side Airbags
- 3-Point Seatbelts (all eight seating positions)
- ECU Immobilizer • 8-Way Power Driver's Seat
- Folding, Heated Power Door Mirrors
- 60/40 Split, Second and Third Row Fold-Down Seats
- Homelink™ Garage Door Opener
- Cruise Control • & Much More...

PILOT EX-L \$43,000 MSRP*

All the features of the Pilot EX, plus:

- Heated Front Seats • Leather-Wrapped Steering Wheel
- Leather-Trimmed Interior (1st & 2nd Row Seats)

LEASE IT FOR **\$498** ✓ per month for 48 months, WITH \$6,748 DOWN FREIGHT & P.D.E. INCLUDED

VISIT YOUR NEIGHBOURHOOD HONDA DEALER FOR A TEST DRIVE TODAY!
 FOR A HONDA DEALER NEAR YOU, CALL 1-888-9-HONDA-9 OR VISIT OUR WEBSITE AT www.honda.ca



[HCFI] Lease offers are available, on approved credit, only through Honda Canada Finance Inc., until October 31, 2002. Lease payments shown are for 48 months and include \$850 for freight and P.D.E. with 96,000 km allowance (12¢/km exceeding 96,000 km applies). *Based on a new 2003 Accord Sedan LX-G, Automatic/Accord Sedan EX-L, Automatic/Accord Sedan LX-V6/Accord Sedan EX-V6/Civic Sedan DX-G, Automatic/Civic Sedan LX, Automatic/Pilot EX/Pilot EX-L (model CM5643E/CM5663N/CM6633E/CM6643J/NE1643P/VE1663PLX/YF1843E/YF1853EN) \$318/\$388/\$388/\$388/\$228/\$248/\$478/\$498 per month for 48 months. A.L.R. 7.7% (total lease obligation of \$15,264/\$17,184/\$19,104/\$10,944/\$11,904/\$22,944/\$23,904). Down payment or equivalent trade of \$3,904/\$4,216/\$5,307/\$4,647/\$2,878/\$3,160/\$6,342/\$6,748 required (zero down payment plans available), plus first monthly payment and security deposit (\$375/\$425/\$425/\$475/\$275/\$300/\$550/\$575). Option to purchase at lease end for \$13,260/\$15,340/\$15,080/\$16,575/\$9,672/\$10,608/\$21,320/\$22,360 plus taxes. *M.S.R.P. does not include freight and P.D.E. (\$850). ✓ Taxes, licence, insurance, administration, registration and maintenance fees are additional. Dealer may lease/sell for less. See your neighbourhood Ontario Honda dealer for details.