

**TOYOTA
RECORD
BREAKING
DAYS**

On your mark, get set...

**TOYOTA
RECORD
BREAKING
DAYS**

LEASE FOR \$299.00 PER MONTH FOR 48 MONTHS WITH \$4959 DOWN

0.9%
PURCHASE
FINANCING



2003 Toyota Sienna CE *plus*
\$29,335 MSRP

- "Best Compact Van in Initial Quality in the U.S. Three Years in a Row" J.D. Power*
- 3.0 Litre V6, 210 HP, VVT-i engine • Dual sliding doors • Sliding third row seat
- AM/FM cassette CD • Dual air conditioning • Power windows, locks & mirrors
- Cruise control • 4 wheel ABS • Remote keyless entry • Engine immobilizer



LEASE FOR \$389.00 PER MONTH FOR 48 MONTHS WITH \$4904 DOWN

5.9%
PURCHASE
FINANCING



2003 Toyota Highlander
\$32,330 MSRP

- "Best Midsize Sport Utility Vehicle in Initial Quality in the U.S." J.D. Power*
- 2.4 Litre 4-cylinder, 16-Valve, 155 HP, VVT-i engine • Air conditioning
- Cruise control • Tilt steering • FWD, 4 speed automatic transmission
- Remote keyless entry • AM/FM cassette CD with 6 speakers
- Antilock brakes • Power windows, locks & mirrors



LEASE FOR \$319.00 PER MONTH FOR 48 MONTHS WITH \$3851 DOWN
FOR AN ADDITIONAL \$17.00 PER MONTH GET AUTOMATIC TRANSMISSION

5.9%
PURCHASE
FINANCING



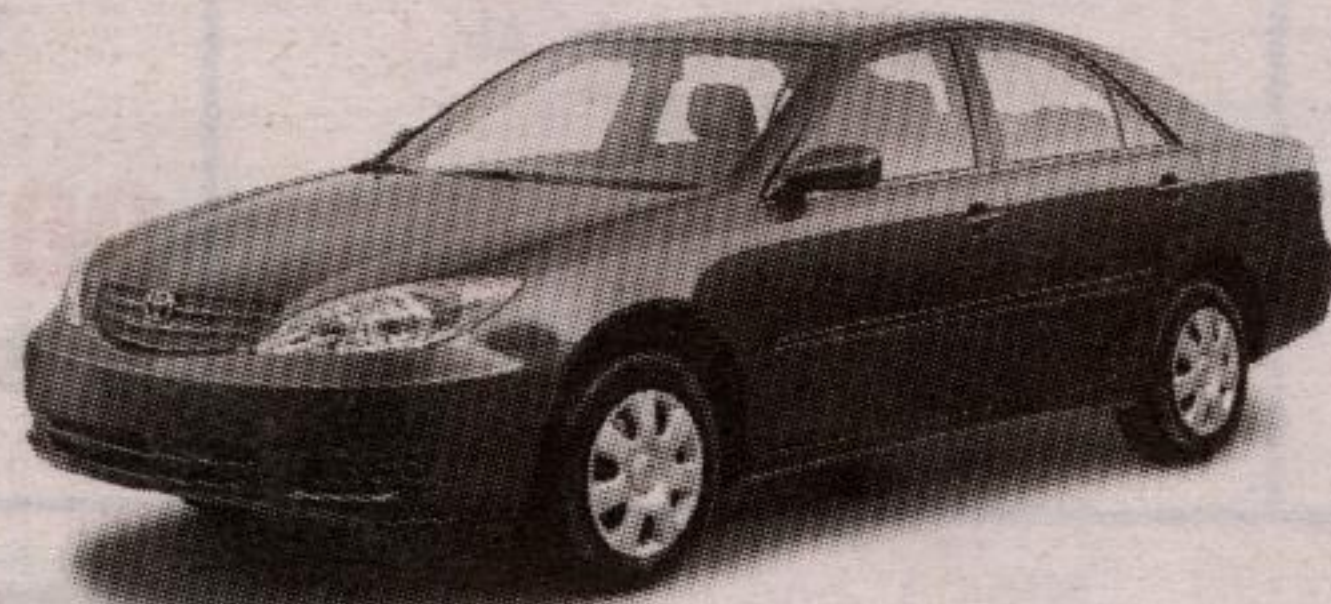
2003 Toyota RAV4
\$26,210 MSRP

- "Best Entry Sport Utility Vehicle in Initial Quality in the U.S." J.D. Power*
- 2.0 Litre, 148 HP, VVT-i engine • Air conditioning • Cruise control
- AM/FM stereo/CD with 4 speakers • 5 speed manual transmission
- Power windows, locks & mirrors • Remote keyless entry
- Tilt steering • 50/50 split rear seat



LEASE FOR \$289.00 PER MONTH FOR 48 MONTHS WITH \$4029 DOWN
FOR AN ADDITIONAL \$22.00 PER MONTH STEP UP TO A 4-CYL. CAMRY SE

5.9%
PURCHASE
FINANCING



2003 Toyota Camry LE
\$24,800 MSRP

- 2.4 Litre 4-cylinder 157 HP, VVT-i engine • 4 speed automatic with overdrive
- Air conditioning • Power windows, locks & mirrors • Cruise control
- Tilt steering • AM/FM cassette CD with 6 speakers
- 60/40 split folding rear seat • Keyless entry • Engine immobilizer

LEASE FOR \$199.00 PER MONTH FOR 60 MONTHS
FOR AN ADDITIONAL \$13.00 PER MONTH GET AUTOMATIC TRANSMISSION

\$0 MONEY DOWN

3.9%
PURCHASE
FINANCING

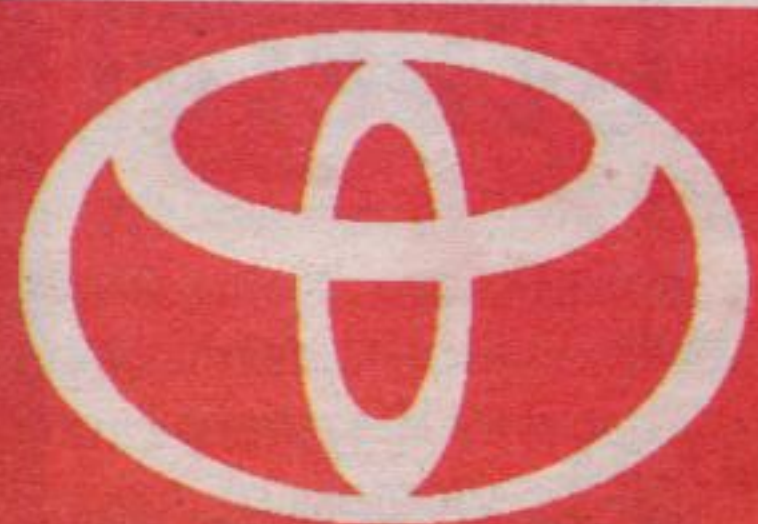


NEW STYLING
2003 Toyota Echo
\$14,025 MSRP

- Hwy fuel consumption rating of 5.1L/100 km (55 mpg)**
- 60/40 split rear seat • AM/FM stereo/CD with 4 speakers
- 1.5 Litre, 16 Valve, 108 HP, DOHC VVT-i engine
- Tilt steering • Power Steering • 5 speed manual transmission
- Intermittent wipers with mist feature

Where can you find your favourite Toyota Dealer? Simply visit us at www.toyota.ca or call 1-888-TOYOTA-8.

Leasing / financing plans from Toyota Credit Canada Inc. O.A.C. Offers valid on new 2003 models leased or purchased by December 2, 2002. License, registration, insurance and taxes extra. Lease includes freight and P.D.E. cost of \$1,260, \$1,260, \$1,260, \$1,110 \$960. Freight and P.D.E. not included in M.S.R.P. Based on 48 mos. walkaway lease at a rate of 4.9%, 5.9%, 5.9%, 6.4% on Sienna, Highlander, RAV4, Camry (models ZF19CSB, GD21APA, HH20VMB or HH20VPB, BE32KPA or BE38KPA). Based on 60 mos. walkaway lease at a rate of 5.2% on Echo (Model BT123MA or BT123PA). Down payment of \$4,959, \$4,904, \$3,851, \$4,029, \$0 or trade equivalent required. Security deposit of \$350, \$450, \$375 or \$400, \$350 or \$375, and \$250 on Sienna, Highlander, RAV4, Camry and Echo respectively. First payment and security deposit due on delivery. Total lease obligation of \$19,314.73, \$23,576.61, \$19,163.66 or \$19,997.55, \$17,900.83 or \$18,959.28, \$11,940.20 or \$12,724.93 and purchase option price of \$14,374.15, \$15,195.10, \$12,580.80 or \$13,156.80, \$12,400.00 or \$12,740.00, \$5,750.25 or \$6,160.25, based on a maximum of 96,000 KMS (120,000 KMS for Echo). Additional KM charge of \$ 10., 15., 10., 10., 07 if applicable. M.S.R.P. of \$ 29,335, \$32,330, \$26,210 or \$27,410, \$24,800 or \$26,000, \$14,025 or \$15,025. Finance example: \$20,000 at 0.9%/3.9%/5.9% per annum equals \$563.30/\$589.59/\$607.53 per month for 36 months. C.O.B. is \$278.80/\$1,225.24/\$1,871.08 for a total obligation of \$20,278.80/\$21,225.24/\$21,871.08. **The Toyota Sienna was the highest ranked Compact Van in the J.D. Power and Associates 2000-2002 U.S. Initial Quality Study. The Toyota Highlander was the highest ranked Midsize Sport Utility Vehicle in the J.D. Power and Associates 2002 U.S. Initial Quality Study. The Toyota RAV4 was the highest ranked Entry Sport Utility in the J.D. Power and Associates 2002 U.S. Initial Quality Study. The Toyota Camry was the highest ranked Compact Sedan in the J.D. Power and Associates 2002 U.S. Initial Quality Study. The Toyota Echo was the highest ranked Compact Car in the J.D. Power and Associates 2002 U.S. Initial Quality Study. **According to the overseas regulation and compliance department of Toyota Motor Corporation (Engineering administration division), 10.9%/3.9%/5.9 no limit purchase financing for up to 36 months available on new 2003 Sienna/Echo/Highlander, RAV4, Camry. †10.9%/2.9%/3.9% no limit purchase financing for up to 36 months available on remaining 2002 Echo, Sienna, Highlander/RAV4, Avalon, Tacoma, Tundra, 4Runner/Camry, Solara, Celica models. Please see your participating Toyota Dealer for complete details. Dealer may lease/sell for less.



GEORGETOWN TOYOTA SALES

15 MOUNTAINVIEW RD. N., - GEORGETOWN 877-2296 Tor. 874-4276

WEBSITE at www.georgetowntoyota.com or E-MAIL at info@georgetowntoyota.com

**2002
Readers'
CHOICE**
The Independent
of Your Press

Voted
Georgetown's
Favourite
Automotive
Import
Dealership

