

NOW IS THE TIME TO SELL YOUR HOME! NOW IS THE TIME TO SELL YOUR HOME! NOW IS THE TIME TO SELL YOUR HOME!

**MARTHA SUMMERS = PROVEN PERFORMER\***

**MARTHA SUMMERS\*** Sales Rep.

**(905) 877-5165**

Mississauga (905) 874-3040 Erin (519) 833-9714

WEBSITE: [www.marthasummers.ca](http://www.marthasummers.ca)



Johnson Associates

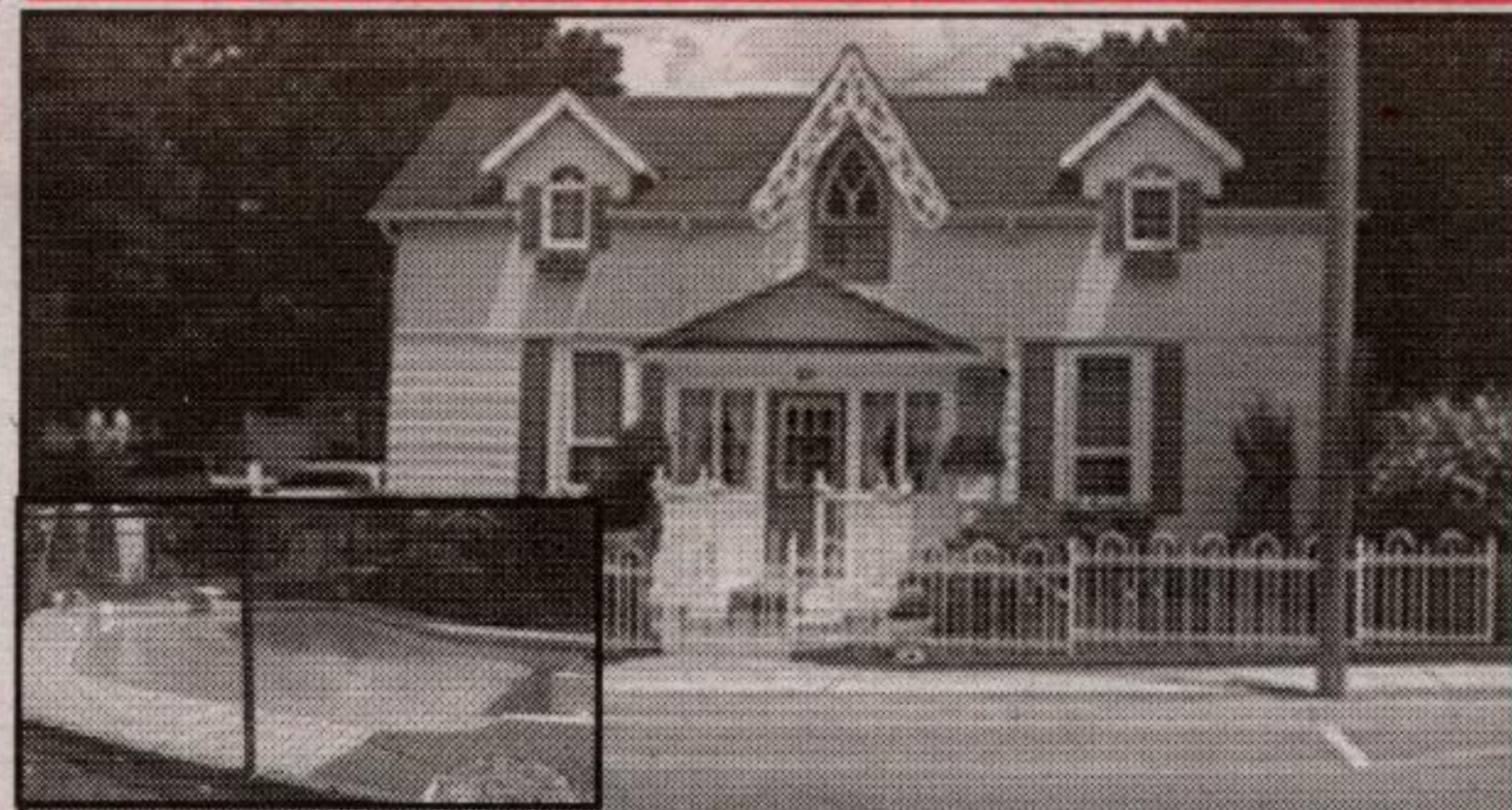
HALTON LTD., REALTOR

**Our market is HOT!! Please call anytime for a FREE Market Evaluation.**



**NEW PRICE**  
"SIMPLY CHARMING" \$379,000  
Super 2+ acres with "Silver Creek" meandering through. Mature landscaping and an almost century 4 bedroom lovingly maintained and upgraded home. Pine eat-in kitchen, living/dining room combo with brick fireplace and oak bookcases. Great Caledon location. Martha Summers\*. MS02-240-60

**OPEN HOUSE - SUN., OCT. 6, 2-4 P.M.**  
85 MAIN STREET, HILLSBURGH



Wonderful charm. Amazing upgrades, huge mature backyard with inground pool, 3 bedrooms plus 2 bedroom apartment. \$269,000. Hosted by Holly Light\*.



**NEW**  
**WALK IN YOUR OWN PARK**  
Superb 1.9 acres, spring fed pond with trout, 3 bedroom, family room walkout to patio, double garage, separate single garage. Minutes to "GO". \$339,000. Martha Summers\*.



**ONE OF A KIND IN BELFOUNTAIN**  
Wonderful mature hardwood, open sun filled spaces and an architecturally unique home with lofted rooms, hardwood floors, stained glass and walkouts at various levels to a sun-deck or overlooking pool or the great yard. Situated in a prestigious area close to golf, skiing, the Bruce Trail and horseback riding. \$599,000. Martha Summers\*. MS02-396-60



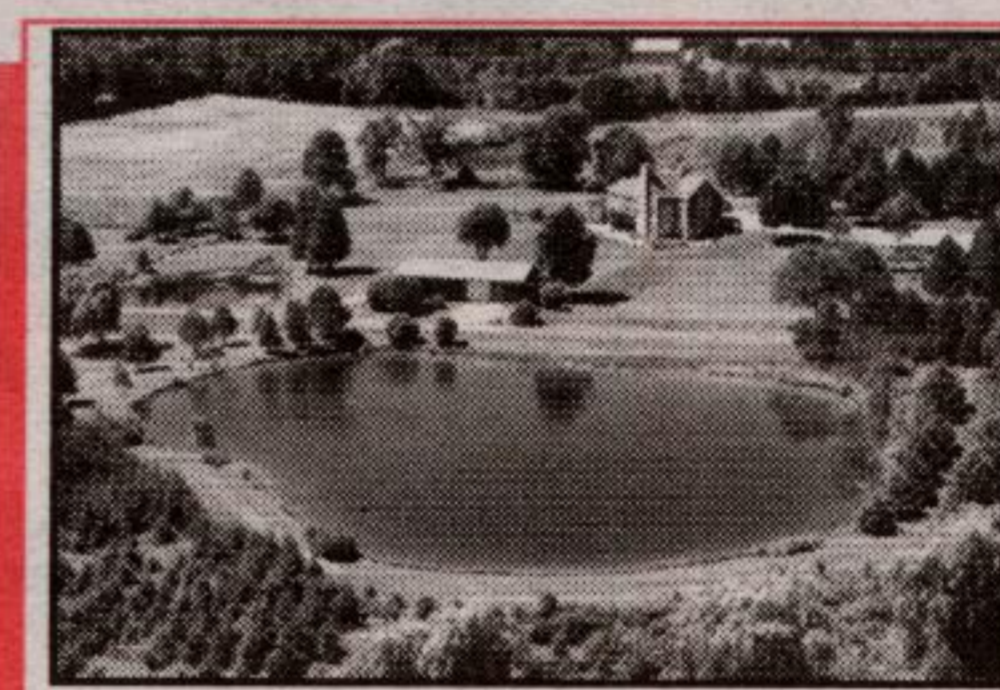
**NEW**  
**STONE LOVERS DELIGHT**  
**GLEN WILLIAMS \$299,000**  
Superb quality, living, dining, kitchen, all open enjoying deep set windows, hwd floors, mn. flr. laundry, master suite with vaulted ceilings, full ensuite, walk-in closet, 1/2 acre. Martha Summers\*.



**SOLD**  
**RETREAT TO THE COUNTRY \$350,000**  
Nestled in a hillside overlooking a nature's paradise. 3 bdrm, walkout basement, wood paneled, vaulted beamed ceiling in livingrm, fireplace, hobby barn/workshop, 2 fabulous ponds. Privacy plus!! Martha Summers\*.



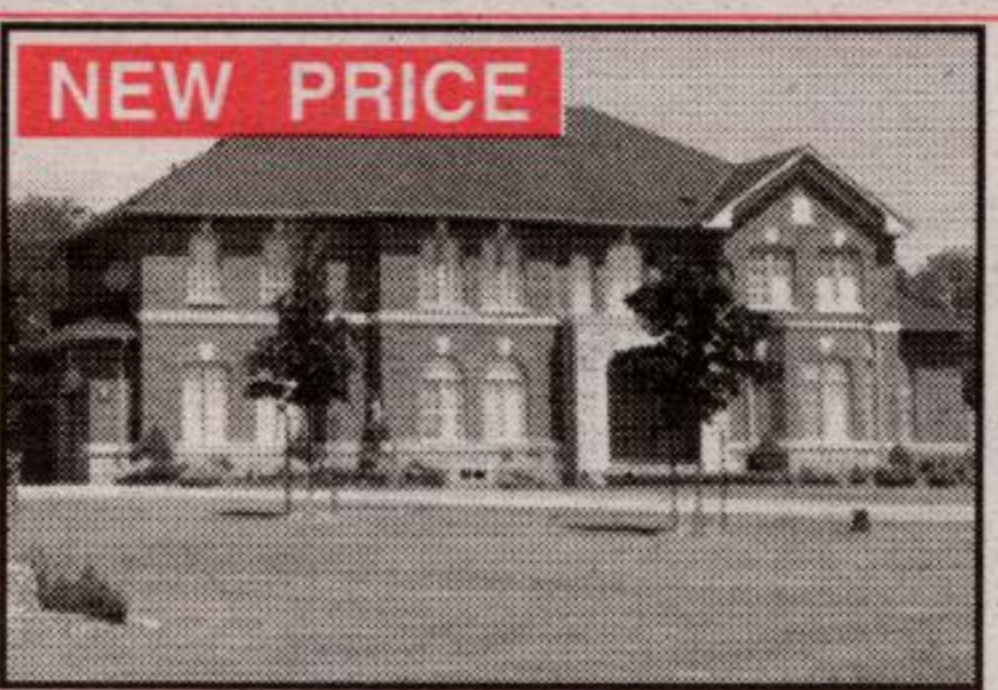
**NEW PRICE**  
**COUNTRY YET 5 MINUTES TO 401 \$369,000**  
Super 1 acre in great location with tons of upgrades. Fabulous pool and decking just completed, walkout basement with second kitchen, hardwood floors, large kitchen eating area and a 2 car garage. Hurry this is a great one. Martha Summers\*.



**SPECTACULAR POST AND BEAM**  
100 acres, 3 stocked ponds, woods, approx. 5600 sq. ft. finished on 3 levels with cathedral ceilings, pine floors, exposed timbers. Stunning!! Horse barn with Beauty stalls, 30x60 insulated garage, 2 loafing barns. 10 min. to Georgetown "GO" train. \$1,500,000. Martha Summers\*.



**90 ACRE FARM \$650,000**  
Special century 4 bedroom Victorian farmhouse with all the original charm and character on 90 fabulous acres with wonderful views and sunsets, workable fields, hardwood bush, drive shed, barn. Minutes to Erin Village. Martha Summers\*. MS02-320-91



**NEW PRICE**  
**OUT OF THE ORDINARY \$799,000\***  
Incredible 3+ acres backing onto woods - 4,000 + sq. ft. with approx 2,000 sq. ft. finished lower level. 7+ bedrooms, 5 bathrooms, sunfilled main level office, 2 fireplaces, hardwood floors, ceramics, inground pool, hot tub, night lighting, 3 car garage plus many more upgrades. Min. to 401. Martha Summers\*. MS02-239-31



**NEW**  
**"ROSS LAKE" 85 ACRE FARM \$749,000**  
Totally renovated with quality, gently rolling farmland, huge pond with island, large barn, drive shed, separate garage, separate office building, airplane hanger, minutes to Georgetown on paved road. Location and Value. Martha Summers\*.



**OPPORTUNITY! 3 BEDROOM + 3 BEDROOM IN-LAW**  
Lots of original character and all the upgrades. Oak floors, high ceiling, recent kitchen plus more. In-law suite with separate yard and entrance. Large deck, mature landscaped lot, walking distance to all amenities. \$229,000. Martha Summers\*. MS02-230-99



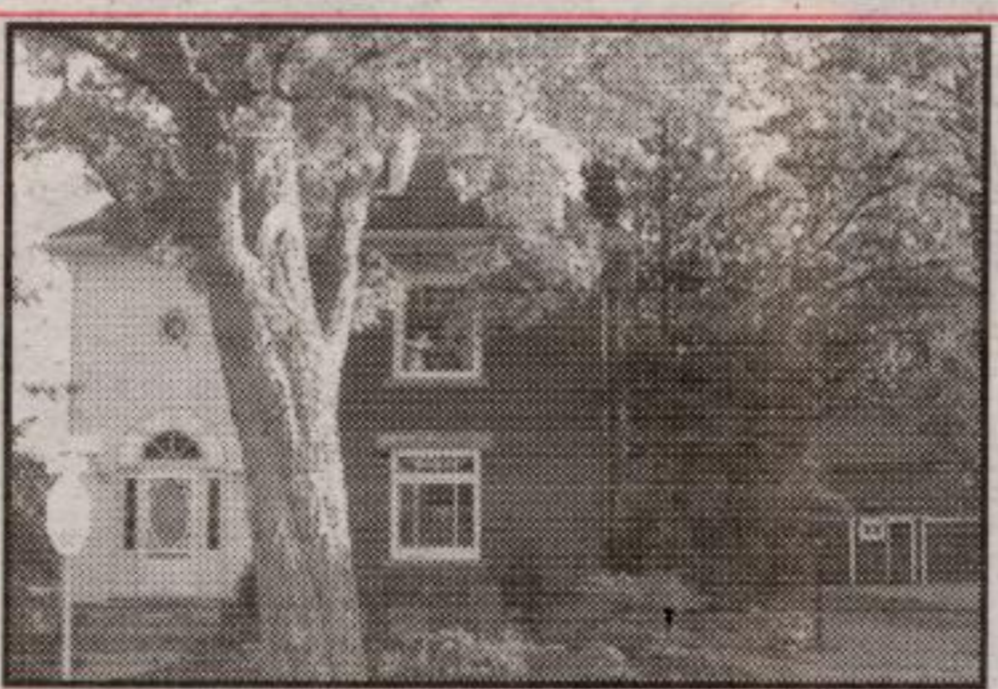
**CHARMING ON HUGE LOT \$242,000**  
Original and restored charm, large eat-in kitchen, formal parlour, dining room, pine floors, high ceilings, quiet street. Martha Summers\*. 02-412-90



**NEW**  
**"MUSKOKA" IN CALEDON \$1,450,000**  
Spectacular 23 acres, woods, water, tennis and absolute privacy just south of Belfountain. Stone and wood home with incredible vistas from every room. Indoor pool, 5 bdrms, 6 baths, floor to ceiling stone fireplaces, maple kitchen, hardwood flrs. Separate 4 bay gar. Martha Summers\*.



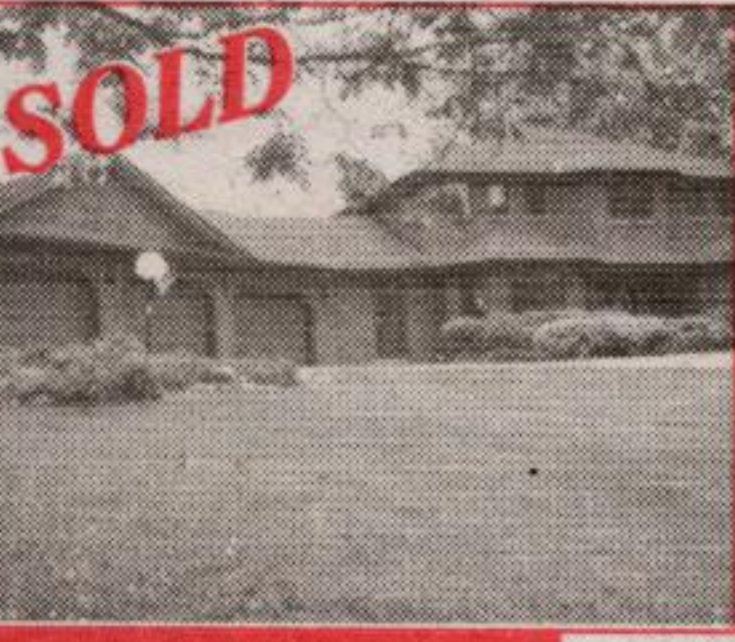
**NEW PRICE**  
**CALLING ALL NATURE LOVERS 6.39 ACRES \$399,900**  
Boat or fish in your own pond and stream. 1800 sq. ft. 3 bedroom "Cape Cod" custom built home. Ceramics, gas fireplace, sunken sitting area off master, large deck, trails, bridges and waterfalls. Truly a unique property. Martha Summers\*. MS02-399-91



**HISTORICAL WATERFRONT**  
...huge yard with access to small lake. Superb 5 bdrm century home + all the charm and upgrades. Cherry kitchen, formal living & dining rooms with original trim, hardwood floors, main floor family rm overlooking waterfalls, spa room & 3rd floor finished loft. Original 2 storey barn/garage/workshop. Very special - walk to town!! \$349,900. Martha Summers\*. MS02-362-90



**NEW PRICE**  
**SOUTH CALEDON COUNTRY**  
Amazing 2-year new custom 4 bdrm home on 1-acre lot in prime location. Approx 3400 sq. ft. of absolute quality - 9 ft. ceilings, granite counter tops, hardwood floors, extra large windows, separate entrance to lower level with windows above grade. 3 car garage. Fabulous!! \$585,000. Martha Summers\*. MS02-310-60



123 BUSH STREET, BELFOUNTAIN



5674 2ND LINE, ERIN



20285 WILLOUGHBY RD., CALEDON



19 TRILLIUM TERRACE, ACTON



**2 HOMES - 25 ACRES - PRIVACY**  
Country 4 bedroom home with fir beams, fireplaces and lots of charm, separate 3 bay garage with finished loft above suitable as self contained 3 bedroom apt. or home office space with private access. Inground pool, spring fed pond, rolling land private and treed, suitable for couple of horses. Very Special at \$599,000. Martha Summers\*. 02-209-91

**LAND LAND LAND LAND LAND LAND LAND LAND LAND**

1. Ballinafad - 4.64 acres, treed, paved road, \$164,000
2. Terra Cotta - 4.9 acres - inside hamlet - rolling - mixed bush - views. \$299,000.
3. Georgetown - Country close to "GO" .9 acre, the well is in. \$148,900.
4. Investment Opportunity \$324,900 - 1.2 acres south end of Village with approx. 6000 sq. ft. useable space partially tenanted. Two road frontages, retail space, workshop space, excellent opportunity. Call for details. 02-327-91
5. Caledon - 15 acres south of Belfountain, gently rolling, close to skiing, golf and riding. \$249,000.
6. Ballinafad - 1.4 acres, treed lot, paved road, \$129,000
7. Erin - .6 acres, paved road, \$110,000
8. Erin - Great Lot, Great Price - Build your dream on 1/2 acre lot surrounded by country. Close to Hillsburgh and Orangeville, \$79,900
9. Caledon - 1 acre south of Inglewood across from golf course. Mature trees, ravine. \$200,000
10. 15 Acres South of Belfountain - 175 ft. frontage, close to skiing and golf. Desirable Area. \$239,900.
11. Mono - 68 acres. Views of Hockley. \$359,000.

NOW IS THE TIME TO SELL YOUR HOME! NOW IS THE TIME TO SELL YOUR HOME! NOW IS THE TIME TO SELL YOUR HOME!

NOW IS THE TIME TO SELL YOUR HOME! NOW IS THE TIME TO SELL YOUR HOME! NOW IS THE TIME TO SELL YOUR HOME!

NOW IS THE TIME TO SELL YOUR HOME! NOW IS THE TIME TO SELL YOUR HOME! NOW IS THE TIME TO SELL YOUR HOME!