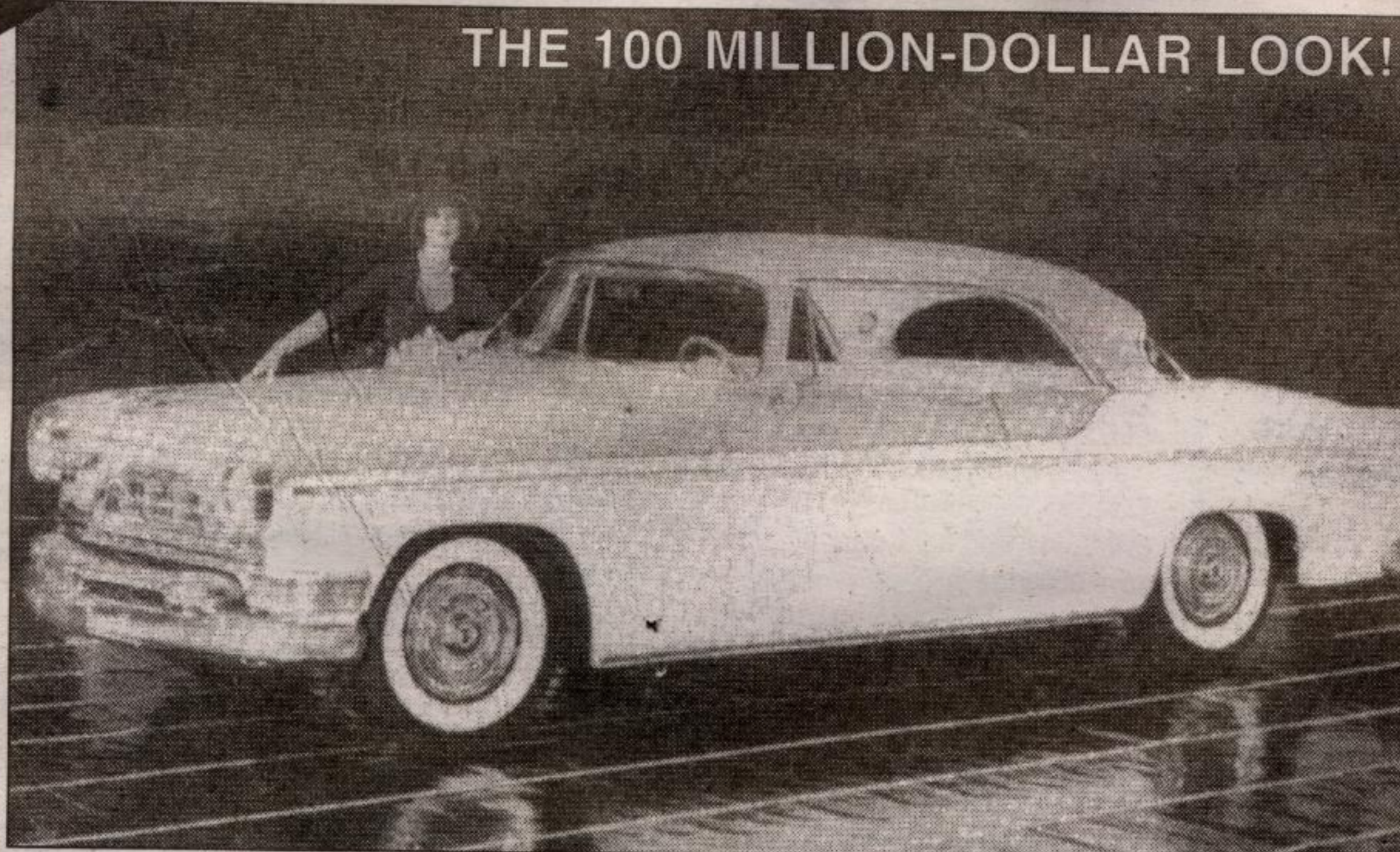


HELD OVER

OUR 2002s ARE SELLING SO WELL, WE THOUGHT IT WAS TIME TO GIVE YOU A PREVIEW OF OUR 2003 MODEL LINE-UP



THE 100 MILLION-DOLLAR LOOK!

250-HP NEW YORKER DELUXE ST. REGIS IN NUGGET GOLD AND PLATINUM

It's taking all America by style!

Think of style...and turn to Chrysler! That's what motorists by the thousands are doing right now. In fact they're turning to Chrysler in greater numbers than ever before...for a totally new fashion in sleek "tailored steel" that's unlike any other car you'll meet on the highway! Here's a lower look. A longer look.. A look of pure motion you'll see in no other car. Even the new, exclusive SuperScenic Windshield has it. It's sweptback... "wrapping around" both top and bottom for new,

safer eye-level vision! Think of performance too...and turn to Chrysler! Come try 250 hp in the world's most efficient car engine. Feel how easily Chrysler's new dash panel shift lever lets you control PowerFlite: most automatic no-clutch drive of all! With Full-time Power Steering and double-width pedal Power Brakes as well...the power of leadership is yours in a Chrysler! We invite you to discover what that means!

CHRYSLER

AMERICA'S MOST SMARTLY DIFFERENT CAR



Special De Luxe Club Coupe

Doors open extra-wide and the back of the front seat swings inward as it tilts forward, making it easy to get in and out of the rear seat. Everybody rides in this comfort-styled club coupe with plenty of room to spare!



Special De Luxe Convertible

All passengers ride in roomy, all-weather comfort. Smartly styled, durable top raises or lowers in about 15 seconds. Double-sized rear window. The car that's gracefully gay in a great big way!

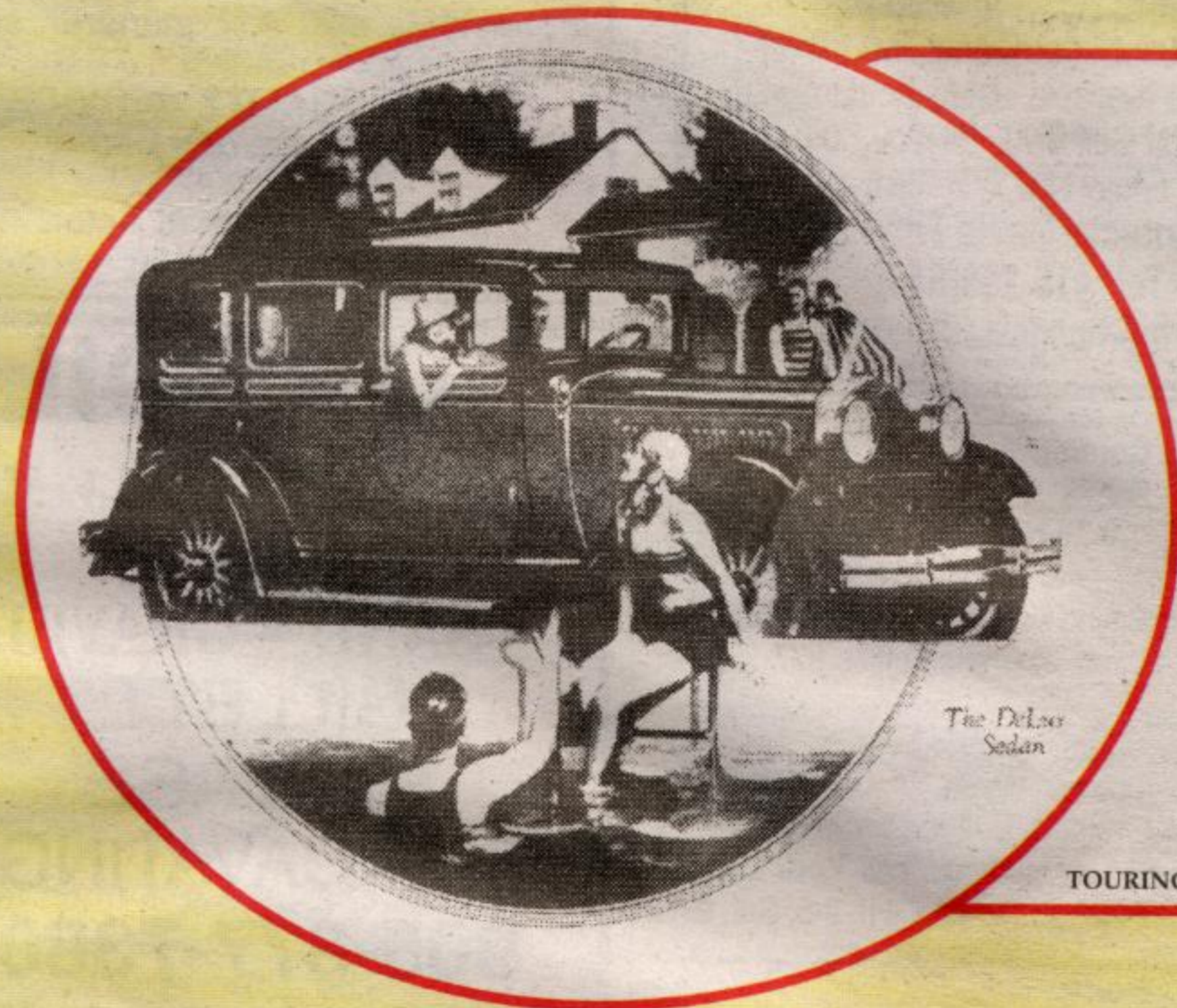


De Luxe Three Passenger Coupe

The car that really gets down to business! Perfect for the businessman, salesman or small family. Huge storage space in oversize luggage compartment. Economical to buy, economical to operate. Ample room for three.



- now more than ever the car that likes to be compared!



Lines that critical eyes approve

From Bailey Beach to Santa Monica the sheer beauty of Dodge Brothers Victory Six continues to evoke overwhelming enthusiasm. Its roomy, luxurious interior; its resilient easeful riding, its aggressive flow of lines and curves - all these have contributed to the increasing popularity of the Victory Six among those who know beauty and demand it.

The same exclusive Victory construction that makes the Victory a safer car makes it more beautiful, too. Space formerly wasted on body sills is now added to headroom, and the center of gravity is brought closer to the ground.

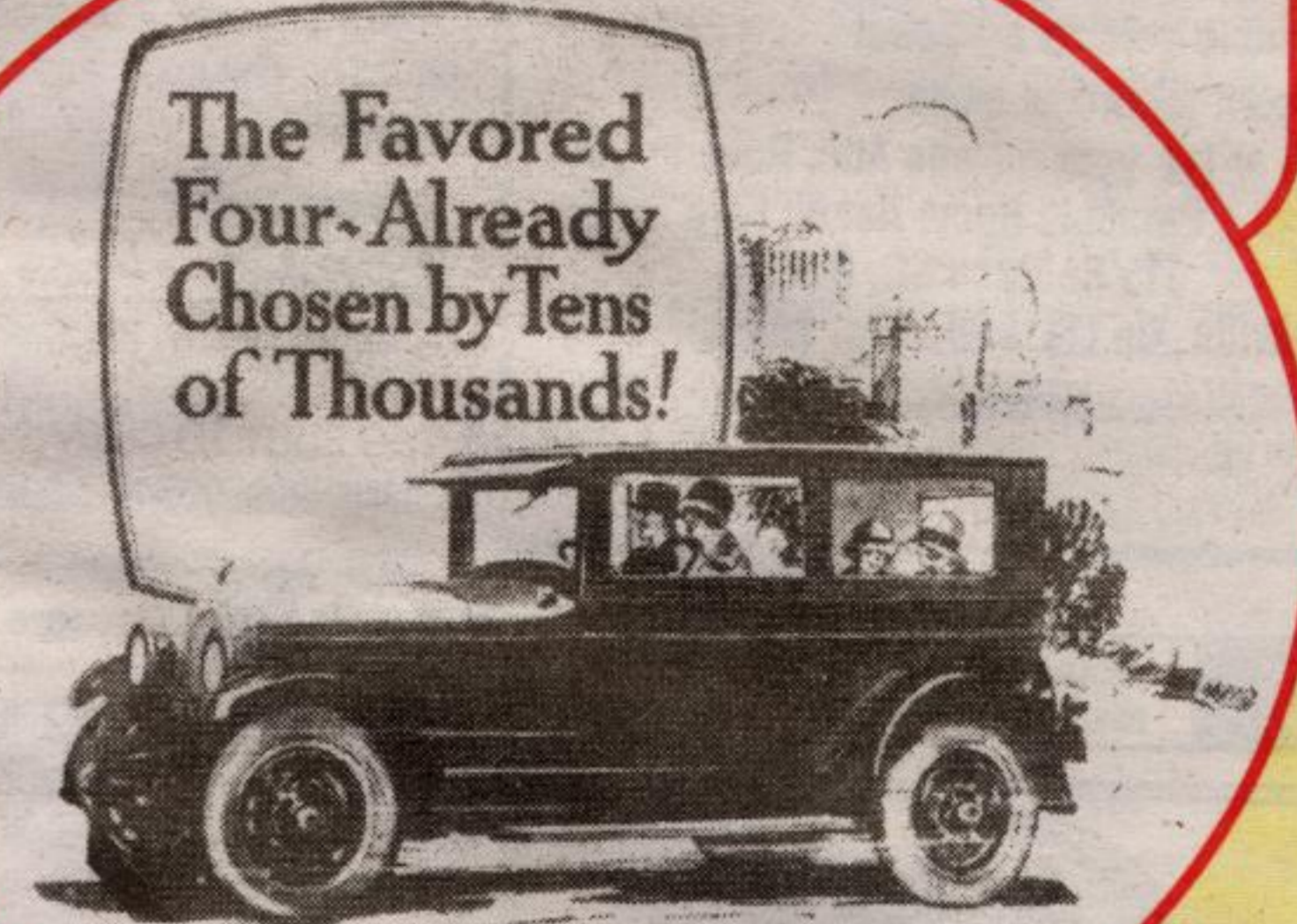
The Victory Six

BY DODGE BROTHERS

TOURING CAR \$995 • 4-DOOR SEDAN \$1095 • DELUXE SEDAN \$1170 • SPORT SEDAN \$1295 • f.o.b. Detroit

A glance at the Victory will give you a new conception of dashing beauty. An hour at the wheel will prove to you that this regal outward fineness is simply one of numberless pace-setting Victory features.

Dodge Brothers Victory Six is the world's fastest car in its price class and the swiftest car on pick-up. It is the pace-maker of its class on the hills - and all in all, the sturdiest, safest and most stylish car yet conceived at anywhere near its price.



Bearing the same standards of surpassing value which characterize its companion car, the famous Chrysler Six; built by the same skilled Chrysler craftsmanship and of the same high quality of alloy steels; of the same distinctive beauty of color and line - little wonder that the new Chrysler Four is sweeping the country. Literally sweeping the country, for Chrysler production has been forced by public demand to the great total of more than 800 cars per day. Tens of thousands of new owners have chosen the Chrysler Four in the

three months since its announcement in comparison with both fours and sixes of equal or greater price. So velvety smooth is its power flow even at the lower speeds, so lightning-like in its effortless acceleration, so free from resonance and any sense of vibration, that the Chrysler Four is acclaimed as the ultimate development of the four-cylinder principle. We are eager to have you test the Chrysler out in your own way, at your earliest opportunity. It will not take you long to learn the reason for such universal favor.

CHRYSLER FOUR - Touring Car, \$895; Club Coupe \$995, Coach \$1045, Sedan \$1095

Hydraulic four-wheel brakes at slight extra cost.

CHRYSLER SIX - Phaeton \$1395, Coach \$1445, Roadster \$1625, Sedan \$1695, Royal Coupe \$1795, Brougham \$1865, Imperial \$1995, Crown-Imperial \$2095.

All prices f.o.b. Detroit, subject to current Federal excise tax.

Bodies by Fisher on all Chrysler enclosed models. All models equipped with full balloon tires.

There are Chrysler dealers and superior Chrysler service everywhere. All dealers are in position to extend the convenience of time-payments. Ask about Chrysler's attractive plan. All Chrysler models are protected against theft by the Fedco patented car numbering system, exclusive with Chrysler, which cannot be counterfeited and cannot be altered or removed without conclusive evidence of tampering.

CHRYSLER SALES CORPORATION, DETROIT, MICH.

CHRYSLER CORPORATION OF CANADA, LIMITED, WINDSOR, ONTARIO

CHRYSLER FOUR

This ad is for entertainment purposes only. Models available may not be exactly as illustrated.



GEORGETOWN CHRYSLER JEEP

GEORGETOWN CHRYSLER (1993) LTD.

336 GUELPH ST., GEORGETOWN



Rebate Up to \$1000^A

905-877-0149

www.georgetownchrysler.com