

GM CANADA WIDE CLEARANCE

SO MANY DEALS. SO LITTLE TIME.



FINANCE

0%+ [†]

purchase financing up to 48 months on virtually all new 2002 vehicles

- \$0 DOWN PAYMENT
- \$0 PAYMENTS FOR 90 DAYS
- \$0 INTEREST FOR 48 MONTHS

OR



RETAIL CREDIT

UP TO \$3000*

Get up to \$3000 in retail credit on the cash purchase of virtually any new 2002 model†

OR



DRIVE AWAY LEASE**

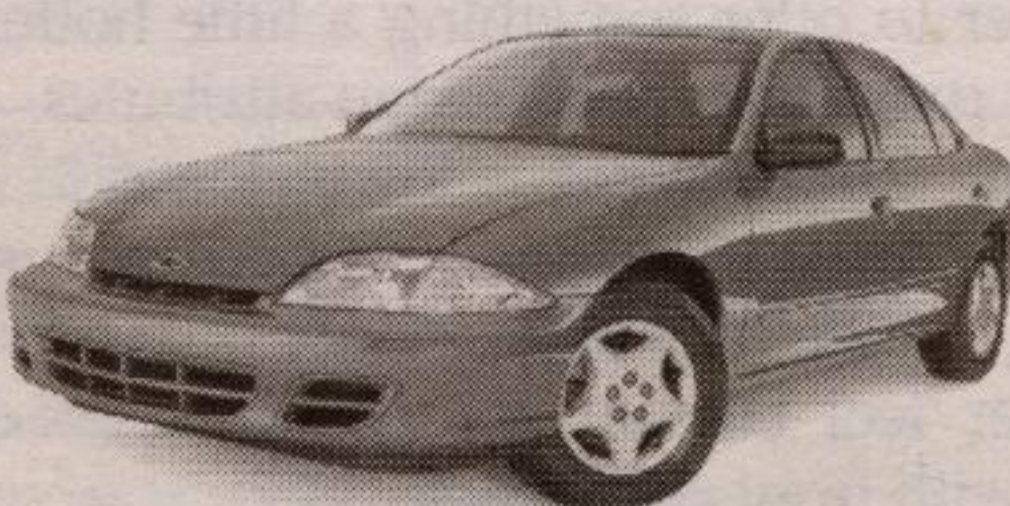
GM makes your first payment
\$0 DOWN PAYMENT
\$0 SECURITY DEPOSIT

**CERTAIN TAXES, PPSA AND ADMINISTRATION FEES MAY APPLY



2002 CHEVROLET CAVALIER VL COUPE OR SEDAN
5-Year/100,000 km Powertrain Warranty

DRIVE AWAY LEASE** \$217 PER MONTH/48 MONTH SMARTLEASE INCLUDES FREIGHT \$0 1 st LEASE PAYMENT \$0 DOWN PAYMENT \$0 SECURITY DEPOSIT	OR CASH PURCHASE \$11,398* CASH PURCHASE PRICE EXCLUDES FREIGHT
--	--



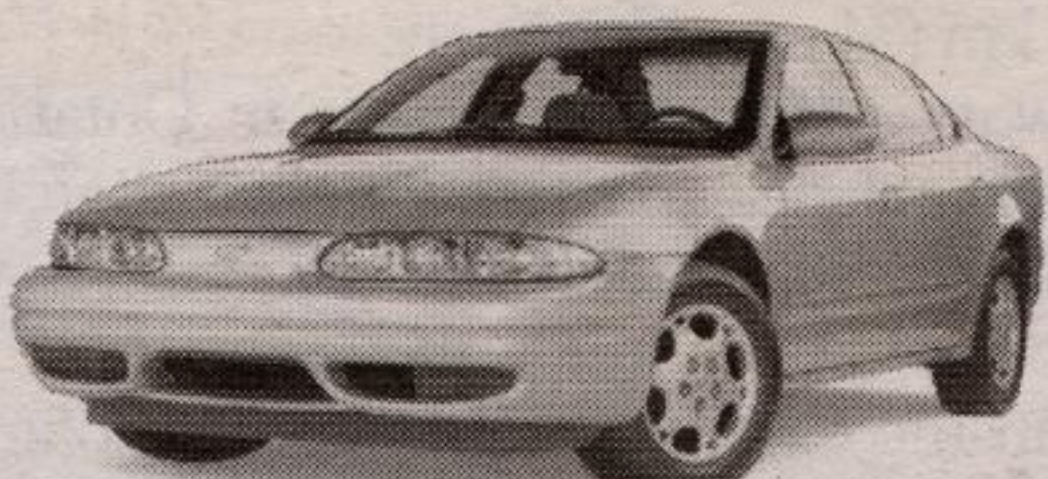
2002 CHEVROLET CAVALIER VLX SEDAN
5-Year/100,000 km Powertrain Warranty

DRIVE AWAY LEASE** \$253 PER MONTH/48 MONTH SMARTLEASE INCLUDES FREIGHT \$0 1 st LEASE PAYMENT \$0 DOWN PAYMENT \$0 SECURITY DEPOSIT	OR CASH PURCHASE \$16,998* CASH PURCHASE PRICE EXCLUDES FREIGHT INCLUDES NO-CHARGE AIR [†]
--	---



2002 CHEVY TRACKER LX 4x4

DRIVE AWAY LEASE** \$281 PER MONTH/48 MONTH SMARTLEASE INCLUDES FREIGHT \$0 1 st LEASE PAYMENT \$0 DOWN PAYMENT \$0 SECURITY DEPOSIT	OR CASH PURCHASE \$198* PER MONTH/48 MONTH SMARTLEASE PLUS FREIGHT \$0 1 st LEASE PAYMENT \$0 SECURITY DEPOSIT \$16,998* CASH PURCHASE PRICE EXCLUDES FREIGHT
--	---



2002 ALERO GX SEDAN BY OLDSMOBILE
5-Year/100,000 km Powertrain Warranty

DRIVE AWAY LEASE** \$297 PER MONTH/48 MONTH SMARTLEASE INCLUDES FREIGHT \$0 1 st LEASE PAYMENT \$0 DOWN PAYMENT \$0 SECURITY DEPOSIT	OR CASH PURCHASE \$238* PER MONTH/48 MONTH SMARTLEASE PLUS FREIGHT \$0 1 st LEASE PAYMENT \$0 SECURITY DEPOSIT \$19,498* CASH PURCHASE PRICE EXCLUDES FREIGHT
--	---



2002 CHEVROLET VENTURE VALUE VAN

DRIVE AWAY LEASE** \$332 PER MONTH/48 MONTH SMARTLEASE INCLUDES FREIGHT \$0 1 st LEASE PAYMENT \$0 DOWN PAYMENT \$0 SECURITY DEPOSIT	OR CASH PURCHASE \$228* PER MONTH/48 MONTH SMARTLEASE PLUS FREIGHT \$0 1 st LEASE PAYMENT \$0 SECURITY DEPOSIT \$21,498* CASH PURCHASE PRICE INCLUDES RETAIL CREDIT EXCLUDES FREIGHT
--	--

ENERGUIDE

The most fuel-efficient van in its class*

☆☆☆☆☆

FIVE STAR SAFETY RATING. Chevrolet Venture holds a 5-Star front seat rating in side-impact tests.†



2002 CHEVY S-10 EXTENDED CAB

DRIVE AWAY LEASE** \$326 PER MONTH/48 MONTH SMARTLEASE INCLUDES FREIGHT \$0 1 st LEASE PAYMENT \$0 DOWN PAYMENT \$0 SECURITY DEPOSIT	OR CASH PURCHASE \$258* PER MONTH/48 MONTH SMARTLEASE PLUS FREIGHT \$0 1 st LEASE PAYMENT \$0 SECURITY DEPOSIT \$23,698* CASH PURCHASE PRICE EXCLUDES FREIGHT
--	---

For the latest information, visit us at gmcanada.com drop by your local Chevrolet • Oldsmobile Dealer or call us at 1-800-GM-DRIVE. †Offer available on approved GMAC purchase financing up to 48/48/48/60/48 months. Example: \$10,000 at 0% APR, the monthly payment is \$208.33/\$166.67 for 48/60 months. Cost of borrowing is \$0. Total obligation is \$10,000. Down payment, trade and/or security deposit may be required. Monthly payment and cost of borrowing will vary depending on amount borrowed and down payment/trade. 0% purchase financing does not apply to 2002 Corvette, Cadillac, Chevy Express, Full size vans-cargo (non Y91 models)/cutaway, Silverado Regular and Extended Cab 2500/3500 (non C6P models), Silverado Crew Cab 2500/3500, and Silverado 3500 HD Chassis Cabs (Carryover Style). 0% purchase financing on approved GMAC credit only for most 2002 vehicles. Term up to 48 months for most 2002 cars, vans, sport utilities and compact trucks. Term up to 36 months for most 2002 full-size trucks, full-size utilities and Camaro. "Drive Away Lease" offer does not apply to purchase financing offer. †Don't pay for 3 months offer available on approved GMAC financing only and applies only to 2002 Cavalier, Alero, Malibu, Impala, Monte Carlo, Intrigue, Venture, Silhouette and Tracker, Blazer, TrailBlazer, S-10, Silverado and Avalanche. †Retail Credits available on cash purchase only. Retail credits are included in cash purchase prices in this advertisement (\$3,100/\$1,000/\$3,700/\$2,200/\$3,000/\$1,000 for Cavalier VL Coupe/Sedan R7A/Cavalier VLX Sedan R7B/Tracker LX X81/Alero GX Sedan R7A/Venture Value Van R7A/S-10 Ext Cab R7B). The SMARTLEASE monthly payment and the GMAC purchase finance rate are not available with and are not calculated on the "Cash Purchase Price" as shown. The difference between the price for the SMARTLEASE/GMAC Purchase Financing offer and the "Cash Purchase" offer is deemed under provincial disclosure laws to be a cost of borrowing, whether or not the same represents actual interest, and is required to be expressed as an annual percentage rate of 10.46%/2.83%/10.01%/5.34%/3.56%/2.04%. Cash purchase price excludes freight (\$795/\$795/\$850/\$845/\$995/\$850) licence, insurance, PPSA, registration, administration fees and taxes. **For 2002 Cavalier VL Coupe/Sedan R7A/Cavalier VLX Sedan R7B/Tracker LX X81/Alero GX Sedan R7A/Venture Value Van R7A/S-10 Ext Cab R7B, General Motors will pay first month's lease payment (including PST/GST as applicable) plus security deposit. Drive Away Lease includes freight (\$795/\$795/\$850/\$845/\$995/\$850). Licence, insurance, registration, PPSA, administration fees and environmental taxes not included. **/SMARTLEASE Offers based on a 1.5%/0.5%/1.9%/0.9%/1.9%/3.4% annual lease rate, 48-month term for Cavalier VL Coupe/Sedan R7A/Cavalier VLX Sedan R7B/Tracker LX X81/Alero GX Sedan R7A/Venture Value Van R7A/S-10 Ext Cab R7B. \$0.12/km charge over 80,000 km for 48 months. Option to purchase at lease end is \$5,245/\$5,047/\$6,887/\$8,685/\$8,825/\$10,051/\$12,479 (Cavalier VL Coupe/Sedan R7A/Cavalier VLX Sedan R7B/Tracker LX X81/Alero GX Sedan R7A/Venture Value Van R7A/S-10 Ext Cab R7B), plus applicable taxes. Other lease options available. *Freight (\$795/\$795/\$850/\$845/\$995/\$850), licence, insurance, registration, PPSA, administration fees and taxes not included. †General Motors will provide the Dealer with a credit equivalent to the value of air conditioning (\$989) Cavalier VLX/Cavalier Z24, plus applicable taxes. Such credit has already been applied to the relevant lease and cash purchase offers shown in this advertisement. ††*Offers apply as indicated to new or demonstrator 2002 models of Cavalier VL Coupe/Sedan R7A/Cavalier VLX Sedan R7B/Tracker LX X81/Alero GX Sedan R7A/Venture Value Van R7A/S-10 Ext Cab R7B delivered on or before September 30, 2002. Offers apply to qualified retail customers in the Ontario Chevrolet • Oldsmobile Dealer Marketing Association area only (including Outaouais and excluding Northwestern Ontario). Dealers are free to set individual prices. Limited quantities of 2002 models available. Dealer trade may be required. Limited time offer that may not be combined with other offers and is subject to change without notice. Certain exceptions apply. See your Dealer for conditions and details. †Tests conducted by the U.S. National Highway Traffic Safety Administration (NHTSA). †Best in class. Based on Transport Canada Fuel Economy Ratings.



0% Purchase Financing also available on Malibu, Impala, Monte Carlo, Intrigue, Aurora, Camaro, Silhouette, Astro, Tracker, Blazer, TrailBlazer, Bravada, Tahoe, Silverado and Avalanche.