

Legion accepts \$75,000 grant

Branch 120 Royal Canadian Legion (Georgetown) received a Trillium grant for \$75,000 which will be used to renovate the branch, and add an elevator and install two barrier free washrooms. On hand for the presentation were (from left) MPP Ted Chudleigh, Trillium board member Sandy Morrow, Branch 120 president Harry Archer and Branch 120 Trillium committee chair Bob McNeilly.

Photo by Ted Brown

Don & Sandra Fosbury are pleased to announce the engagement of their daughter,

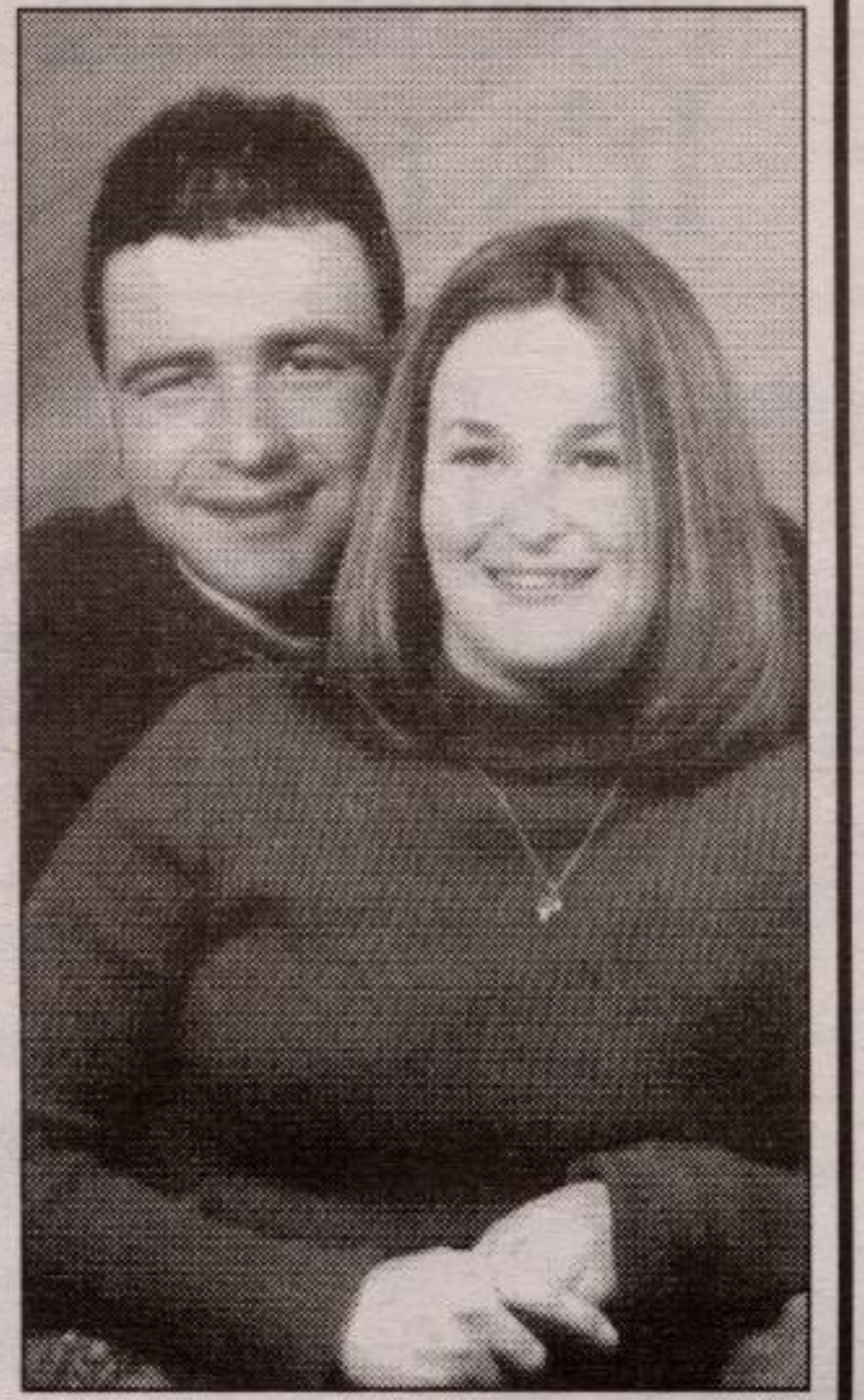
Shannon Dawn

to

Mark David,

son of David & Bonnie Woodworth, Labrador City, Newfoundland.

Wedding to take place August 9, 2003.



Fashion show to provide 'Spark of Brilliance'

Joie de Vivre, the tenth anniversary show for artistic clothing designer Bonnie Glass will benefit "Spark for Brilliance," a new program to support creativity and mental health.

There will be two showings, 1:30 p.m. and 7 p.m., at the Teahouse in Terra Cotta Inn Thursday (September 26).

Seating is limited to 75.

Tickets are \$20 which includes coffee and dessert. For reservations call Studio Melange at 905-873-7366 or Williams Mill Art Gallery at 905-873-8203. Previewing of the art is possible by visiting www.bonnieglass.com.


BUCK & DOE
for
Cherie Snow & Rich Corley

Sat. Sept. 28th/02
Lions Club Georgetown
42 Mill St., (Behind old arena)
8 pm - 1 am
Prizes, Games & Buffet
\$10 per person
Call Lindsay for tickets
416-717-9410



Happy 25th Anniversary

Pete & Bev Hayes



Love Amy & Jason

Bill & Jan Schenk are pleased to announce the engagement of their daughter **CARRIE** to **DEREK** son of Debbie Marling and Murray & Karen Marling. Wedding to take place May 2003.



Which Craft

Arts and Crafts Studio and Georgetown's Birthday Party Central

Reminder to Parents: FRIDAY OCTOBER 11th is the First PD/PA Day for the Halton Public and Catholic School Boards,

so Which Craft has planned an

ARTS AND CRAFTS CAMP DAY!

Camp will run from 9:30 to 3:30 (with extended hours available on request) You must sign up for this day and registration has begun.

Cost of camp is \$35.00 per day Call Janette or Ida at 905-877-8444

Birthday Party bookings are busy as ever, so don't delay in arranging your child's special day. We have a host of themes to choose from or we can help you create the perfect plan for your child. Our parties are all inclusive- the craft, the games and prizes, the snacks and drinks, the cake, the pinata, the face painting, the invitations and thank you notes, our unique loot bags...and we'll do the clean up.

Call to book your party today

905-877-8444

or drop in to the studio at
72 Main Street South,
Downtown Georgetown.

Saturday October 26th from

10 to 12 is our first

KIDS CRAFT WEEKEND

of the season

We will be working on

HALLOWEEN CRAFTS.

Registration is underway, don't be disappointed call early to book space. (for kids from 4 to 14)

IS YOUR BUSINESS GAINING BOTTOM LINE GROWTH? IS YOUR BUSINESS ATTRACTING & KEEPING THE BEST TALENTS AND ABILITIES IN THE MARKETPLACE?

It is not experience that counts or college degrees or other accepted factors; success hinges on a fit with the job. Harvard Business Review

The above quote is the conclusion of a well-documented study that considered many factors including the age, sex, race, education and experience of approximately 300,000 subjects. It evaluated their job performance and found no significant statistical differences except in the area of Job Match. To find out more register now for this FREE seminar.

Identifying and Retaining Top Performers

At the Knolcrest Centre, 360 Guelph Street (corner Delrex & Guelph) Georgetown, ON.

Dates	Times:
Sept. 25th, 2002	Four different times to choose from: 7:30 - 9:00 a.m.
Oct. 9th, 2002	9:30 - 11:00 a.m.
Oct. 23rd, 2002	1:30 - 3:00 p.m. 3:30 - 5:00 p.m.

Space is limited so please register early

Partners in Progress

To register or to gain more information contact:

Wendy Hue - (905) 877-2183 Email: coach_hue@sympatico.ca

Enhancing the performance of people in business with measurable results that have a direct impact on bottom line profitability

