

Looking for a job? The Employment Partners Centre can help

By LISA TALLYN
Staff Writer

If you are unemployed and looking for work, The Georgetown Employment Partners Centre in Georgetown can provide you with a wealth of information to help you in every avenue of your job search.

The Employment Partners Centre brings employment and career programs and services together in one location at 184 Guelph St. The programs are available to the unemployed and under-employed (people working part-time), and are free of charge.

Employment partners include The Centre for Skills Development and Training, JBJ Employment Services Inc., WorkWay and Quality and Continuous Improvement Centre.

Greg Daly, coordinator-counselor at The Centre for Skills Development and Training, said programs offered include employment counseling, career assessments, client case management and service direction, resume preparation, skills evaluation and job opportunities for youth.

Daly, who provides employment counseling, explained that the service he offers assists unemployed who are experiencing barriers to employment and helps clients identify and resolve employment related issues.

Through the counseling, clients identify strengths, develop a realistic step by step employment action plan, and receive ongoing support to assist with employment needs.

Assessment services offered help clients identify their strengths, skills and interests.

Assessments available include interests, aptitude, skills, personality, emotional intelligence and academic testing.

The Job Opportunities for Youth program offered provides youth aged 15 to 30 with meaningful full-time work, where they can earn between \$8.50 and \$25 per hour.

Within the Employment Partners Centre is WorkWay, an organization funded by the Human Resources Development Centre that acts as a gateway to community resources by helping clients assess their obstacles and needs and providing them with information to make appropriate choices about their future.

Clients develop a Work Return Action Plan with client advisors, such as Erin Shipley, who also lead information sessions to inform clients about various service providers.

Another service available at The Employment Partners Centre is JBJ Employment Services.

Kerry Wright of JBJ helps people find the right job and the right employer in significantly less time than if they were doing it on their own, how to create job opportunities, prepare a resume, and gain confidence to attract employer interest,



Employment partners at The Georgetown Employment Partners Centre Guelph St. include from left Rick Orr of the Quality and Continuous Improvement Centre (QCIC), Erin Shipley of Workway, Greg Daly of The Centre for Skills Development and Training, Elizabeth Blaauwendraat QCIC, and Bev Nielsen (seated at front) of The Centre for Skills Development and Training.

Photo by Lisa Tallyn



KERRY WRIGHT

master the job interview and land the job.

Wright said she usually spends about two hours with clients during their first session and when they meet again, about a week later, the clients usually have a draft resume they can work on together.

She helps them to focus their resume and to "transform that resume into a living, breathing human being with a personality."

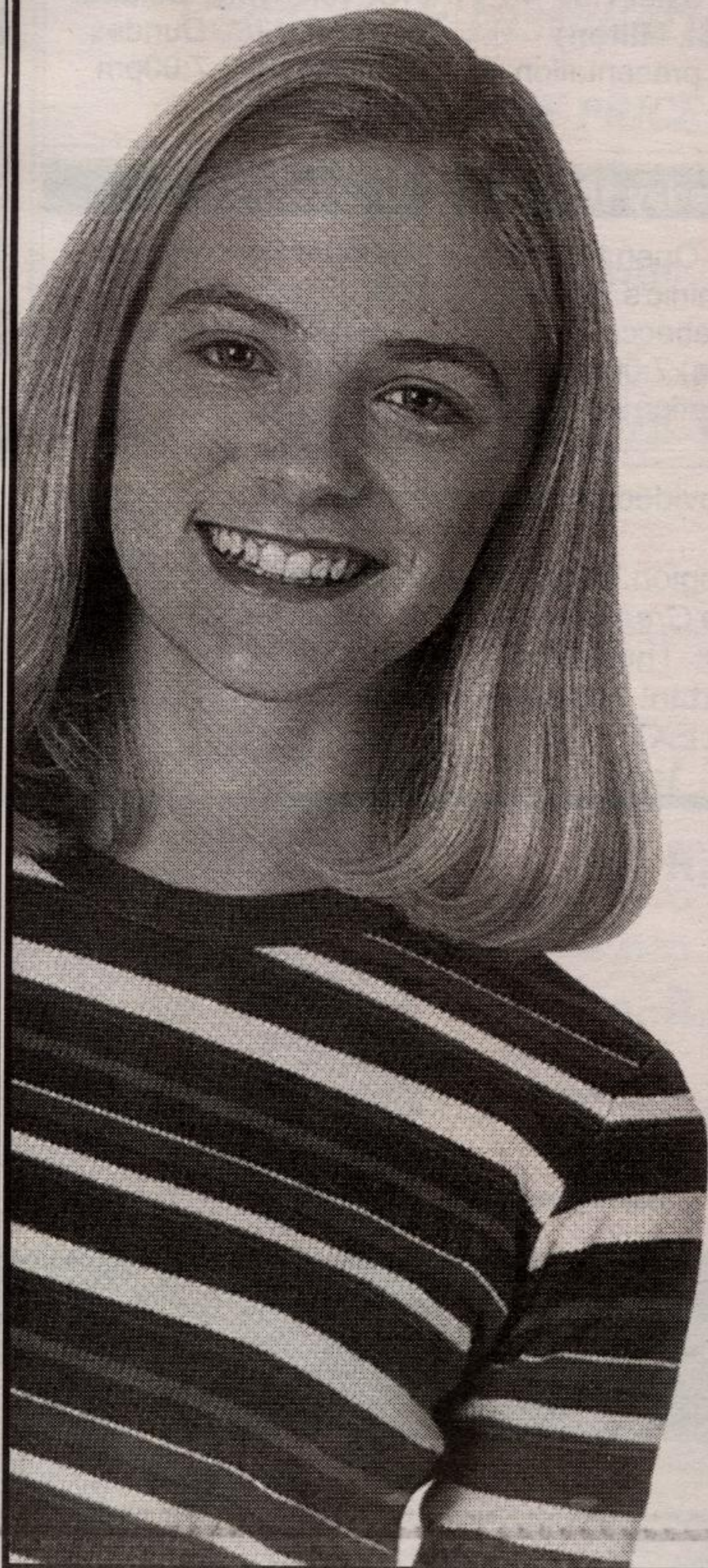
The Quality and Continuous Improvement Centre provides those on employment insurance with information on

their rights and responsibilities, a through workshops, tips on how to find a job, and information on the various services available to them.

The Georgetown Employment Partners Centre plans to offer workshops to the public during Canada Career Week November 3 to 9. Details will be released closer to the date.

For more information on the Georgetown Employment Partners Centre call 905-702-7311.

When reading comprehension improves, frustration is no longer a part of the story.



At Sylvan, we know that poor reading comprehension can affect a child's performance in school and ability to do homework. So we pinpoint the source of the reading problems and address it with a programme developed just for that child's needs. Once reading comprehension improves, your child can succeed in any subject.

Sylvan offers:

- The Sylvan Skills AssessmentSM - a comprehensive profile of your child's strengths and weaknesses. It will pinpoint the cause of your child's struggles and offer a solution.
- Certified teachers who deliver personalized instruction.
- Guaranteed results - your child's reading skills will improve by one full grade level equivalent in only 36 hours of instruction*.
- Flexible payment options

Help you child overcome reading problems. Call us today.



SYLVAN LEARNING CENTRESM

Success is learned.SM

18 Regan Rd.,
Brampton

(Hwy. 7 & McLaughlin)

905-840-1100

Johanna Skalin Centre Director

*some restrictions apply