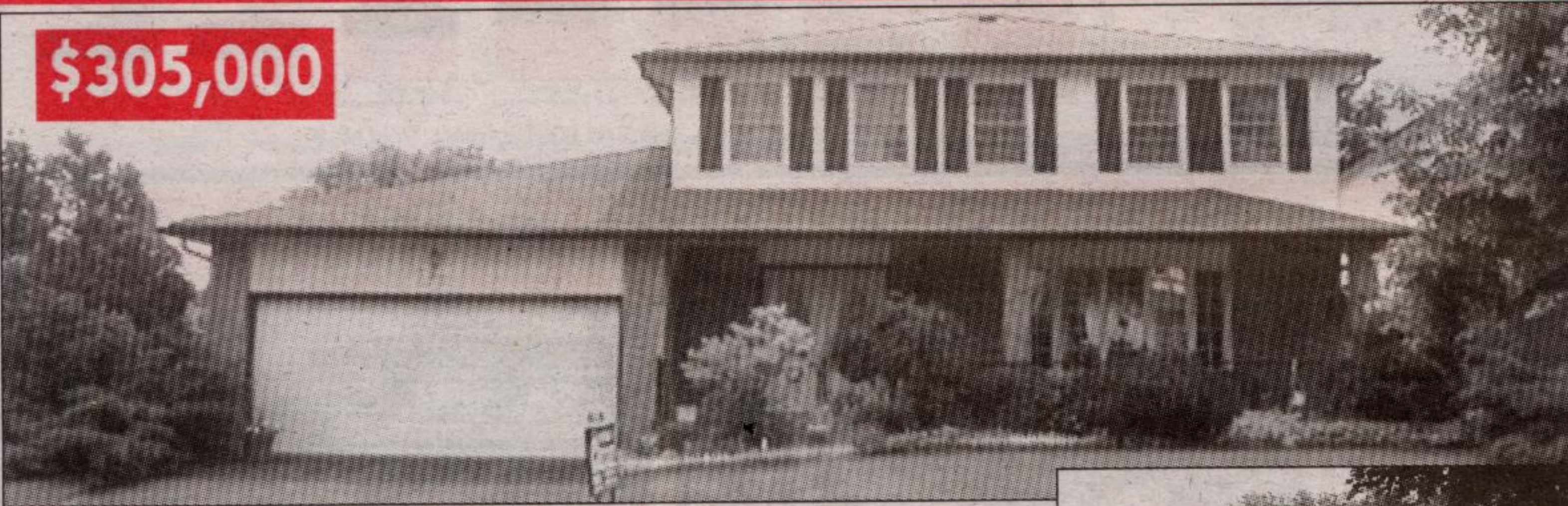


Kathleen Walsh *Sales Rep.
877-5211 or 1-800-834-5516
www.kathleenwalsh.com



RAVINE LOT - \$305,000



\$305,000

Prime Georgetown location

Large principal rooms. Beautiful new bay window and double front doors. New furnace, new shingles, walkout from family room to balcony, full basement with walkout.



TOO NEW FOR PHOTO

- 4 bedrooms
- 3 bathrooms
- gas fireplace
- central air and central vac
- double car garage
- full basement - has been roughed in for apartment

NEW \$150,000 GREAT PLACE FOR KIDS

SOLED

Walk to the Georgetown Shopping Mall. **4 bedrooms**, 2 baths (main bathroom has been totally renovated), new bedroom, new cushion flooring, finished basement. Nice yard. Immaculate.

\$154,000 MISSISSAUGA CONDO

SOLED

- 1 bedroom + den + solarium
- Ensuite laundry room.
- Fantastic view of Toronto skyline and lake.
- Close to GO train
- Includes five appliances

KATHLEEN "HAS THE BUG" TO SELL!

Kathleen Walsh
 1-800-834-5516
 www.kathleenwalsh.com

LIST WITH KATHLEEN WALSH TO RECEIVE THE KATHLEEN WALSH ADVANTAGE

When you list with Kathleen, she will provide a **complimentary** visit from an **INTERIOR DECORATOR** who will give you invaluable and economical suggestions to prepare your home for sale. Use the suggestions you like to secure the best price possible for your investment.

- Furniture placement
- Picture arrangement
- Plants & accessories
- Wall colour and treatments
- Lighting

Give your home a makeover with the Kathleen Walsh Advantage

DONNA RAE*
 *Sales Rep.
877-5211

RE/MAX
 BLUE SPRINGS REALTY (Halton) CORP.
 360 Guelph Street, Georgetown

\$175,000

IMMACULATE 4 LEVEL SEMI-DETACHED HOME

Large eat-in kitchen with breakfast bar and open concept to the living room and dining room. Family room with window overlooking the yard. Rec room in the basement with 4th bedroom and washroom. 2nd kitchen allowing for the possibilities of an in-law suite with separate entrance. Single car garage and interlocking patio in the backyard (great for entertaining or just sitting and relaxing). This home is definitely a must see. Call **Donna Rae***.

Complimentary Market Evaluation

This certificate entitles the bearer to one "complimentary" market analysis of their home's current value.

RE/MAX Above the Crowd!

DONNA RAE*
 *Sales Rep.
877-5211

RE/MAX
 BLUE SPRINGS REALTY (Halton) CORP.
 360 Guelph Street, Georgetown

Not intended to solicit properties already listed for sale.