

Veterinarians open emergency clinic

Halton Hills veterinarians have teamed up with their counterparts in Peel Region, Orangeville and Dufferin to open an emergency clinic on Highway 10 in Brampton.

A partnership of 24 area veterinary clinics has formed to open the Emergency Veterinary Clinic, an after-hours hospital providing service to any pets in need from 7 p.m. to 8 a.m. Monday to Thursday and from 7 p.m. Friday to 8 a.m. Monday. The clinic will open Sept. 4.

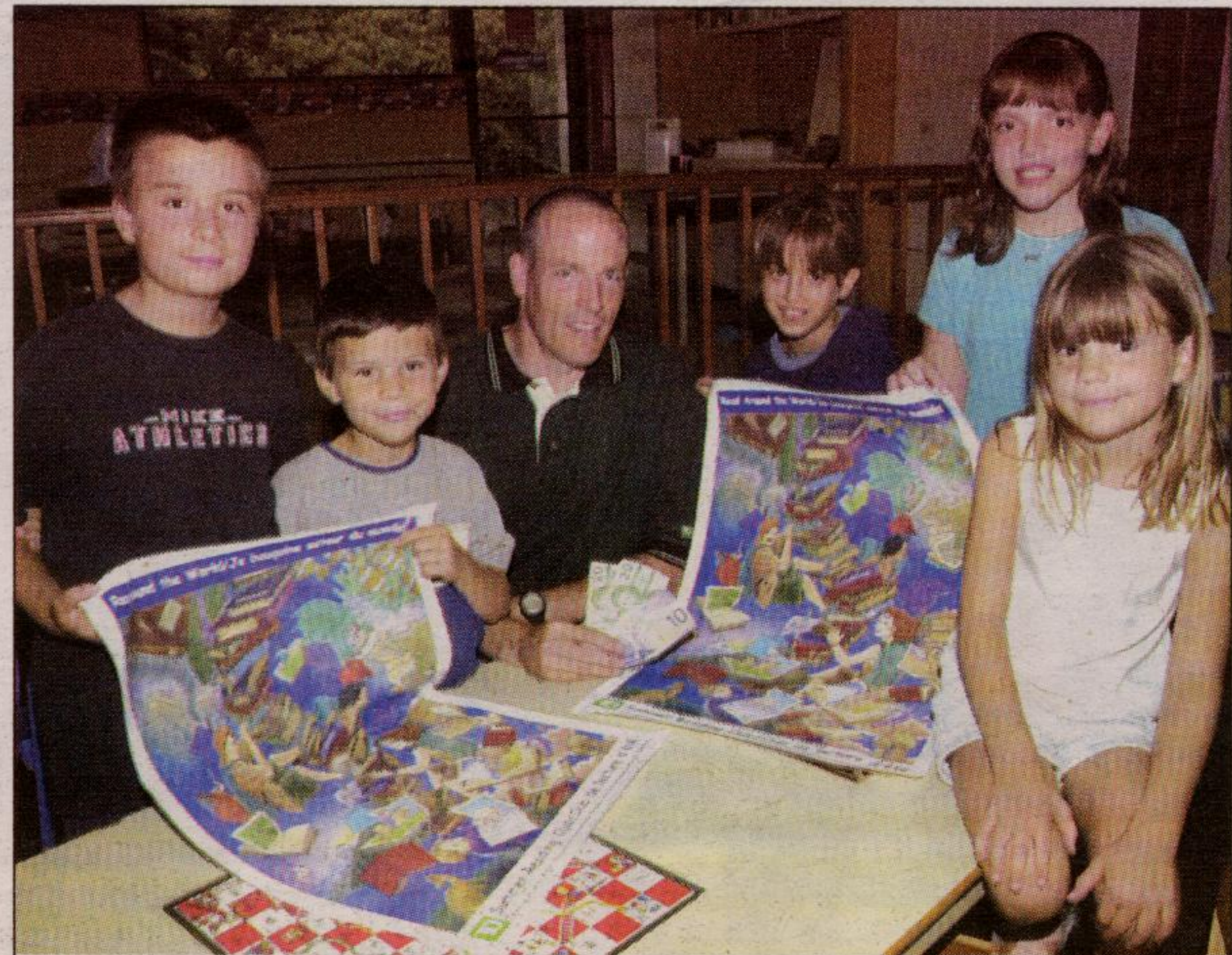
The new hospital is located on Hwy. 10 and Wexford Dr. just south of Mayfield Rd.

and north of Bovaird Dr. The hospital has medical, surgical, laboratory, nursing monitoring and emergency services that meet the standards for an emergency hospital with the College of Veterinarians of Ontario.

Pets' medical records will be forwarded to the family veterinarian the following morning.

Pets requiring immediate help can be taken directly to the emergency clinic where trained staff will offer assistance or advice.

The emergency clinic can be reached by calling 1-905-495-9907.



Profitable reading

The Summer Reading Club wrapped up at Halton Hills Public Libraries on Saturday as more than 700 Halton Hills kids took part over the summer months. The province-wide reading program was sponsored by Toronto Dominion Canada Trust Bank, donating the posters and promotional material. In addition, the local Guelph St. Branch donated two \$50 Registered Education Savings Plans and two \$50 bank accounts to be divided between Acton and Georgetown branches. On hand for the photo were (from left) Brady Keen, 9, Alexander Keen, 7, TD Canada Trust Guelph St. manager Bryan Rothery, Maria Pires, 10, Colleen Munro, 11 and Ryann Keen, 6.

Photo by Ted Brown

NISSAN

AUGUST IS CLEAROUT TIME FOR THE 2002's.

2002 Nissan Sentra
2002 Carguide "Best Buy"

Demo's on Sale Now



For only **\$199** /month*

for 48 months, only \$1,298 down. No Security Deposit O.A.C.

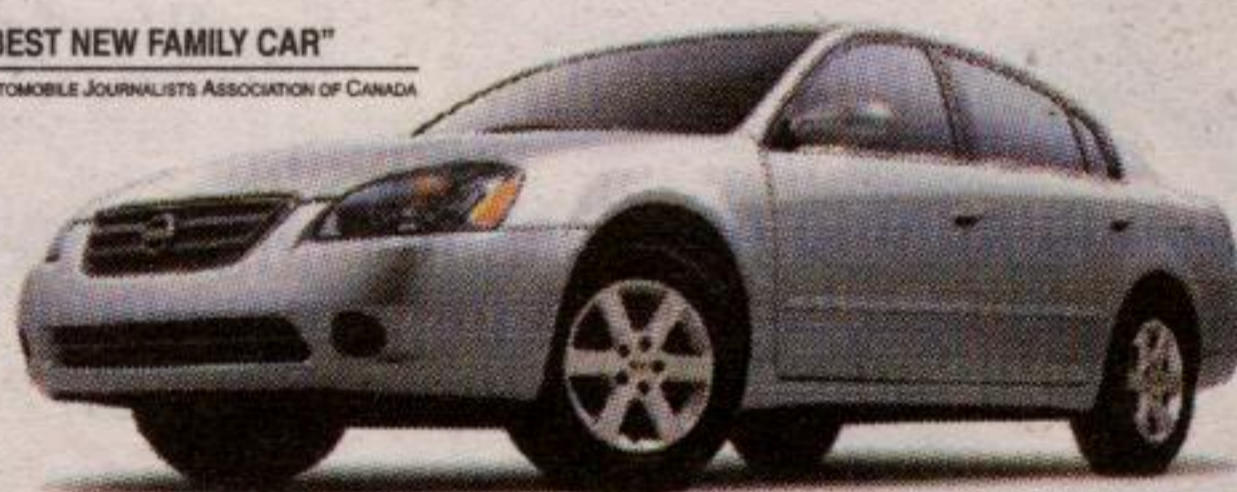
Or choose **1.8%** Financing. **NO PAYMENTS FOR 90 DAYS.**

Lease Sentra XE with Value Option Package

- 126-HP 1.8-litre DOHC engine • Air conditioning • AM/FM with CD audio system and 4 speakers • 14" steel wheels • Full wheel covers
- 8-way manual driver's seat • 60/40 split folding seat • Centre console armrest • And much, much more...

2002 Nissan Altima
2002 Canadian Car of the Year

"BEST NEW FAMILY CAR" AUTOMOBILE JOURNALISTS ASSOCIATION OF CANADA



For only **\$319** /month*

for 48 months, only \$3,320 down. Includes Destination and Delivery.

- 175-HP 2.5-litre DOHC engine • Air conditioning • AM/FM with CD audio system and 6 speakers • Power heated outside mirrors • 60/40 split rear seat w/lock • 8-way manual driver's seat • Tilt and telescope steering column • And much, much more...

Lease Altima 2.5S with AUTOMATIC

2003 Nissan Maxima
Introducing the new benchmark in performance and luxury

Demo's also Available



For only **\$399** /month*

for 48 months, only \$3,900 down. Includes Destination and Delivery.

- 255-HP 3.5-litre DOHC 24-valve engine • 4-speed automatic with gated shifter • 16" alloy wheels (5-spoke)
- Anti-lock Braking System • Dual power, heated mirrors • HID Xenon headlights • 8-way power driver's seat
- Automatic climate control A/C with microfilter • Power windows, locks, trunk/fuel release • Cruise
- Sport steering wheel • Premium CD stereo with AM/FM/cassette • And much, much more...

Lease Maxima GXE with AUTOMATIC

2002 Nissan Pathfinder
"Chilkoot Edition" Only Available in Canada



For only **\$399** /month*

for 48 months, only \$5,199 down. Includes Destination and Delivery.

- Includes over \$2,100 in additional value-added options • 4-speed automatic with overdrive • "All-Mode" 4-wheel drive • Upgraded 150-watt Bose® CD audio system with in-dash 6-disc autochanger • 8-way adjustable driver's seat • Dark titanium-coloured side-step rails • Steering-wheel-mounted audio controls • Upgrade interior trim • And much, much more...

Lease Pathfinder "CHILKOOT EDITION"

2002 Nissan Xterra



Starting at **\$34,498**

- 21-HP SuperCharged engine • 17" aluminum alloy wheels • Premium 210-watt audio system • Side-step rails • And much, much more...

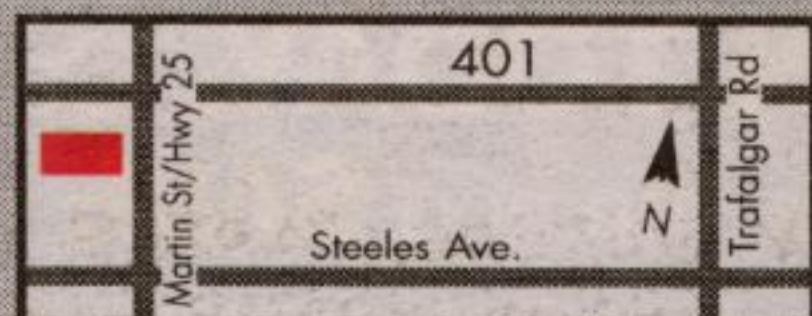
2002 Xterra SE "SuperCharged"

HURRY IN TO YOUR NISSAN DEALERSHIP TODAY!

Milton's **NORTH END NISSAN LTD.**

610 MARTIN STREET, MILTON 905-878-4137

SALES DEPT. HOURS: Mon.-Thurs. 9:00 - 9:00
Fri. 9:00 - 6:00
Sat. 9:00 - 5:00



Smart people always read the fine print. And they always wear their seat belts. Offers available for a limited time and may change without notice on new 2002 Altima S (149522 AEM), 2002 Sentra XE 5-speed manual with Value Option Package (CAL022 BK00), 2002 Pathfinder "Chilkoot Edition" Automatic (SC0272 AE30) and 2003 Maxima GXE Automatic (U4HG72 AA00). 1.8% purchase financing for 36 months and no payments for 90 days is available only on 2002 Sentra XE and GXE models. No interest charges will apply during the first 90 days after purchaser takes delivery. After the first 90 days, interest starts to accrue and the purchaser will repay principal and interest monthly over the term of the contract. Financing examples: \$20,000 at 1.8% per annum equals \$271.11 per month for 36 months. COB is \$658.85 for an obligation total of \$20,558.85. 1.8% purchase financing for 36 months available on Pathfinder "Chilkoot Edition". Other finance rates available on other models. Financing examples: \$20,000 at 2.8% per annum equals \$578.85 per month for 36 months. COB is \$375.07 for an obligation total of \$20,875.07. *48-month lease on Altima Sentra Pathfinder "Chilkoot Edition" Maxima: 5.9% (2.7%+3.2%+0.0% ALR), down payment or equivalent trade of \$1,900/\$1,298/\$5,199/\$3,320. Lease based on a maximum of \$5,000/7,000/9,000/95,000 km with excess charged at \$0.15/km. If the vehicle is financed at 1.8%+2.8% and the cash purchase price is not taken, the effective interest rate is 1.8% for Sentra and 2.8% for Pathfinder "Chilkoot Edition". All offers are O.A.C. and exclude destination and delivery (Sentra 5988 included with Maxima, Altima and Pathfinder) (\$250 lease administration fee for Sentra). Licence, insurance, taxes and other Dealer/ship charges are extra and must be paid at the time of transaction. See your Nissan Dealership for details. Offers cannot be combined with any other offers. Dealer may sell lease for less. Not all vehicles are available at all Dealerships. Vehicles not exactly as shown. Nissan logo is a trademark of Nissan Canada Inc. Visit www.nissan.ca.

Please recycle this newspaper

School is Back -
Please Drive Safely!



Ethel Gardiner
Chair of the Board
Dusty Papke
Director of Education



Al Bailey
Chair of the Board
Lou G. Piovesan
Director of Education

Learn to Drive...
and Survive



The YD Program is not available in your High School

YOUNG DRIVERS® of Canada

36 YEARS OF RELIABLE SERVICE ISO 9001 REGISTERED

REGISTER FOR YOUR COURSE TODAY WITH \$220.00 DOWN AND USE OUR EASY PAYMENT PLAN

GEORGETOWN CLASSROOM

16 Mountainview Road South

SATURDAY SEPTEMBER 21st
Saturday & Sunday * 2 Weekends * 9 am - 3:45 pm

SATURDAY OCTOBER 19th
Saturday & Sunday * 2 Weekends * 9 am - 3:45 pm

SATURDAY NOVEMBER 16th
Saturday & Sunday * 2 Weekends * 9 am - 3:45 pm

Because YOUNG DRIVERS Saves Lives, we can now save you something much less important; MONEY

- SAVINGS #1: Save up to \$500+ on Insurance!
- SAVINGS #2: Save \$500 at Ford of Canada
- SAVINGS #3: \$25 YOUNG DRIVERS® Collision Free! grad certificate.



905-877-0751

