

Our Market Is Strong - Call Now Our Market Is Strong - Call Now Our Market Is Strong - Call Now Our Market Is Strong - Call Now

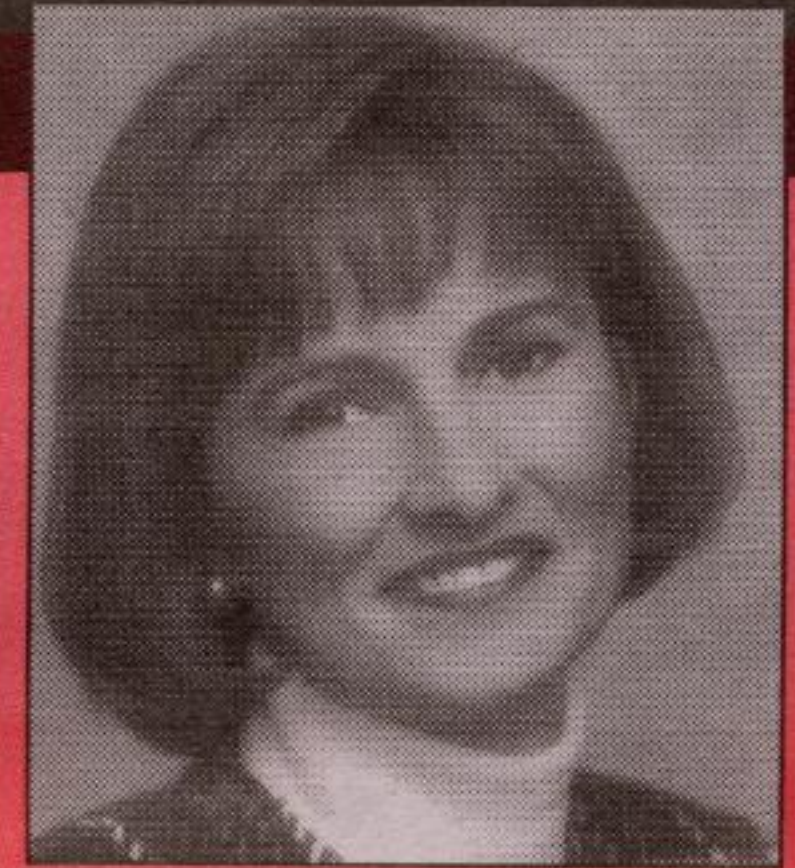
MARTHA SUMMERS = PROVEN PERFORMER*

MARTHA SUMMERS* Sales Rep.

(905) 877-5165

Mississauga (905) 874-3040 Erin (519) 833-9714

VISIT MY WEBSITE AT: www.realtor.com/toronto/msummers



Johnson Associates

HALTON LTD., REALTOR

Our Market Is Strong - Call Now Our Market Is Strong - Call Now Our Market Is Strong - Call Now Our Market Is Strong - Call Now

Our market is HOT!! Please call anytime for a FREE Market Evaluation.



\$449,000


ANOTHER WOODED WONDERLAND - BELFOUNTAIN
Maple lined driveway leads to wonderful sunfilled 4 bdrm home featuring hardwood floors, huge family room with fireplace, formal living and dining rooms and main floor office, 3 car garage with basement access. Wonderful views and sunsets, excellent location. **Martha Summers***. MS02-241-60

OPEN HOUSE SATURDAY, JUNE 1 ~ 2-4 PM
4 PARK AVENUE, ACTON



LAUNCH YOUR CANOE . . .
...from your own yard in a small lake. Superb 5 bdrm century home + all the charm and upgrades. Cherry kitchen, formal living & dining rooms with original trim, hardwood floors, main floor family rm overlooking waterfalls, spa room & 3rd floor finished loft. Original 2 storey barn/garage/workshop. Very special - walk to town!! \$369,000. **Martha Summers***.
Directions: Hwy. 7 west to Acton, West on Mill St. to Park Ave. - watch for signs.

NEW



AN ORIGINAL HOMESTEAD \$699,000
Special century 4 bedroom Victorian farmhouse with all the original charm and character on 90 fabulous acres with wonderful views and sunsets, workable fields, hardwood bush, drive shed, barn. Minutes to Erin Village. **Martha Summers***. MS02-320-91

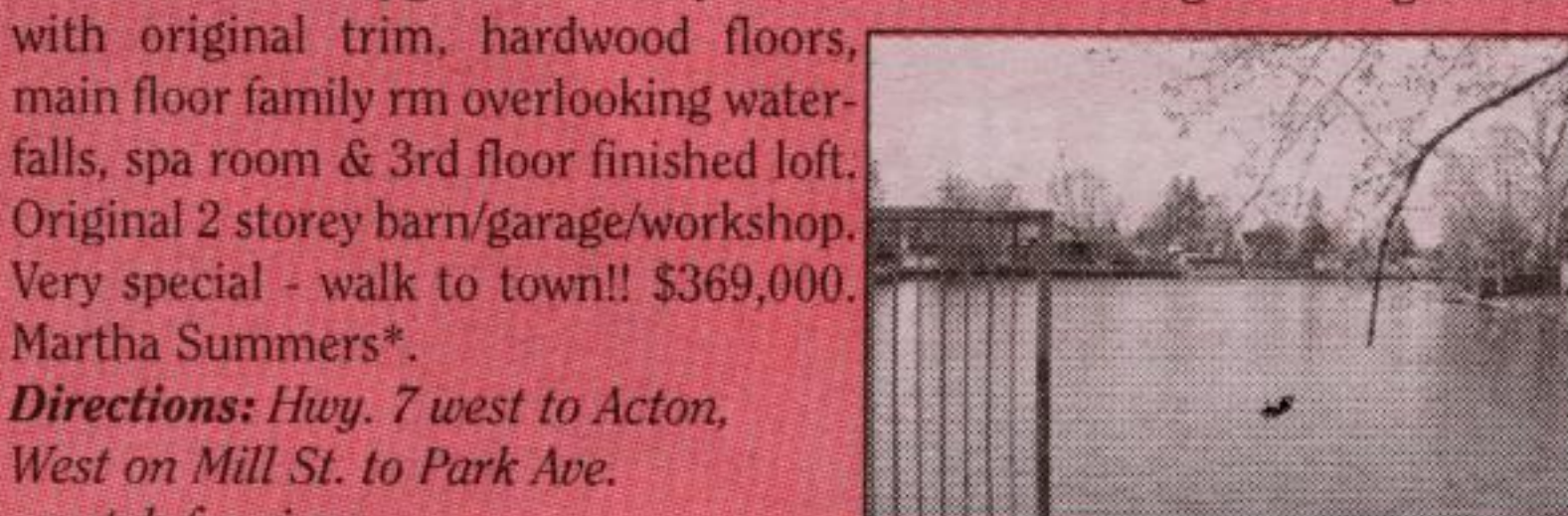
NEW

Going . . .



CARAFRAXA WOODS 4.9 ACRES \$450,000
Fabulous custom 3 bdrm bungalow on ravine, wooded lot with stream. Quality oak trim, wonderful oak eat-in kitchen overlooking spacious sun filled family room with 3 sided fireplace. Master bedroom with ensuite, double closets and walkout to yard. Second staircase to lower level from oversized garage. **Martha Summers***. MS02-296-99

NEW




LOCATION, LOCATION, LOCATION!
Amazing 2-year new custom 4 bdrm home on 1-acre lot in prime location. Approx 3400 sq. ft. of absolute quality - 9 ft. ceilings, granite counter tops, hardwood floors, extra large windows, separate entrance to lower level with windows above grade, 3 car garage. Fabulous!! \$599,000. **Martha Summers***.

NEW



BACKING ONTO TREED GREEN SPACE
Upgraded 4 bedroom home with maple kitchen, family room with 2-storey height, gas fireplace, sunken living room overlooking dining room, main floor office, ceramics, gleaming hardwood, large deck and more on a fabulous lot. \$369,000. **Martha Summers***. MS02-249-30



CALEDON - A TRUE CLASSIC \$439,000
Exceptional detail and style in this traditional centre hall plan home with 4 bdrms situated on a lovely 1 acre lot in the quaint village of Mellville. Superb spacious oak kitchen overlooking the main floor family room with woodstove and walkout to large deck. Wonderful living and dining rooms, finished rec room, great room for family and friends. Very special!! **Martha Summers***. MS02-186-60

NEW




WATCH THE GOLF WATCH THE WATER!
Superb open concept bungalow with 2nd storey master, situated on the very best lot overlooking the golf course and ponds, with superb sunsets. Vaulted ceilings, hardwood floors, 4-sided fireplace, inground pool with waterfall, hot tub. Wheelchair accessible. A must to see at \$749,000. **Martha Summers***.

NEW

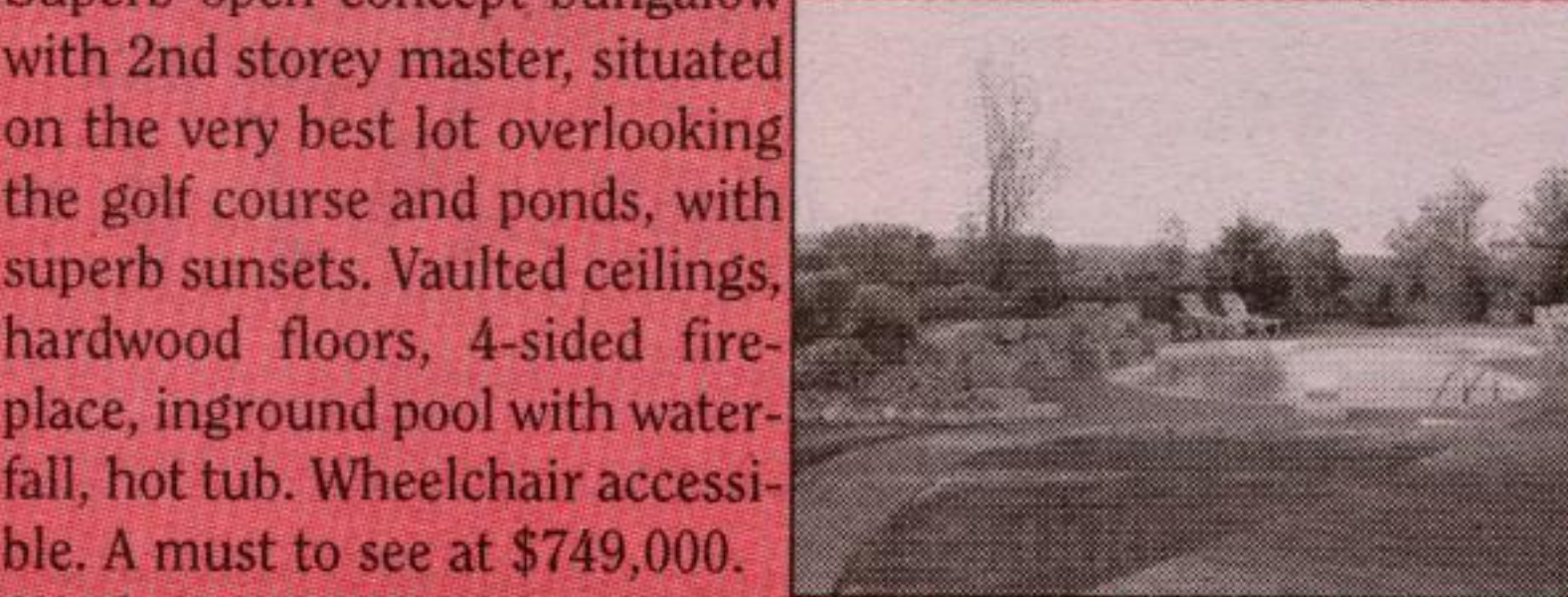


END UNIT TOWNHOUSE \$149,000
Super 2 bedroom end unit townhouse. Sun-filled living room with wood burning fireplace. Upgraded kitchen. Bedrooms have large closets and walkouts to private balconies. Partially finished basement. Walk to GO. **Martha Summers***. MS02-284-30



"A RIVER RUNS THRU IT" - \$419,000
Super 2+ acres with "Silver Creek" meandering through. Mature landscaping and an almost century 4 bedroom lovingly maintained and upgraded home. Pine eat-in kitchen, living/dining room combo with brick fireplace and oak bookcases. Great Caledon location. **Martha Summers***. MS02-240-60

WATCH THE GOLF WATCH THE WATER!




CHARMING CENTURY 3 BEDROOM AND 3 BEDROOM IN-LAW
Lots of original character and all the upgrades. Oak floors, high ceiling, recent kitchen plus more. In-law suite with separate yard and entrance. Large deck, mature landscaped lot, walking distance to all amenities. \$239,000. **Martha Summers***. MS02-230-99

Going . . .



FOR THE DISCERNING PURCHASER - \$849,000
Incredible 3+ acres backing onto woods - 4,000 + sq. ft. with approx 2,000 sq. ft. finished lower level. 7+ bedrooms, 5 bathrooms, sun-filled main level office, 2 fireplaces, hardwood floors, ceramics, inground pool, hot tub, night lighting, 3 car garage plus many more upgrades. **Martha Summers***. MS02-239-31



CHARMING WITH 2ND HOME ON 25 ACRES
Great opportunity to have your family live with you but not under the same roof. Superb 3 bdrm country home with post and beam details. Second 3 bdrm residence above 3 bay garage with walkout to pool and surrounding area. Private 25 acres with spring fed pond, rolling meadows and views. Very special at \$599,000. **Martha Summers***. MS02-209-91



CHARMING CENTURY 3 BEDROOM AND 3 BEDROOM IN-LAW
Lots of original character and all the upgrades. Oak floors, high ceiling, recent kitchen plus more. In-law suite with separate yard and entrance. Large deck, mature landscaped lot, walking distance to all amenities. \$239,000. **Martha Summers***. MS02-230-99



FOR THE DISCERNING PURCHASER - \$849,000
Incredible 3+ acres backing onto woods - 4,000 + sq. ft. with approx 2,000 sq. ft. finished lower level. 7+ bedrooms, 5 bathrooms, sun-filled main level office, 2 fireplaces, hardwood floors, ceramics, inground pool, hot tub, night lighting, 3 car garage plus many more upgrades. **Martha Summers***. MS02-239-31

SOLD




15 ROBINA AVE., GEORGETOWN

SOLD



37 CHESTER CRES., GEORGETOWN

SOLD



19 CEDAR DR., CALEDON

SOLD




674247 HURONTARIO ST., MONO

SOLD



4250 ENNISCLARE DR., MILTON

SOLD



11689 22ND SIDEROAD, HALTON HILLS

SOLD



12884 10TH SIDEROAD, HALTON

SOLD



33 GREYSTONE CRES., GEORGETOWN

SOLD



6 RUDDELL, GEORGETOWN

SOLD



14 BOWMAN, GEORGETOWN

SOLD



4951 WELLINGTON RD. 24, ERIN

LAND LAND LAND LAND LAND LAND

1. North of Glen Williams - 88 acres - stream - woods - working land - 2 road frontages - \$449,000.
2. NEW Build Your Dream - Hockley Valley!! Superb 68 rolling acres with views, recent fencing and stone fence lines. Small original farm house, great location minutes from Orangeville and Hockley Valley. \$379,000.
3. Terra Cotta - 4.9 acres - inside hamlet - rolling - mixed bush - views. \$299,000.
4. Georgetown - Country close to "GO" .9 acre, the well is in. \$148,900.
5. NEW Erin - .6 of an acre on paved road close to golf, riding and skiing. \$110,000.
6. Erin - 48 acres with cedar, hardwood, escarpment rock, reforested pine, open meadow, a pond site and views in a prestigious area of south Erin, in horse country and close to Bruce Trail and GO. \$360,000.
7. NEW - Investment Opportunity \$324,900 - 1.2 acres south end of Village with approx 6000 sq. ft. useable space partially tenanted. Two road frontages, retail space, workshop space, excellent opportunity. Call for details. **Martha Summers***.
8. South of Belfountain - 30 acres with hardwood, open fields, pond and more. Perfect for your home or hobby farm. \$349,000. **Martha Summers***.

Our Market Is Strong - Call Now Our Market Is Strong - Call Now Our Market Is Strong - Call Now Our Market Is Strong - Call Now