

PROVIDING REAL ESTATE SERVICES FOR CALEDON, ERAMOSA, GUELPH & HALTON

PROMOTING YOUR PROPERTY IN TORONTO & LOCAL ADS.

LARRY BARNSTAPLE
Tor 905-877-1237
905-877-5211

www.barnstaplehomes.com



WENDY BARNSTAPLE
REPRESENTATIVE

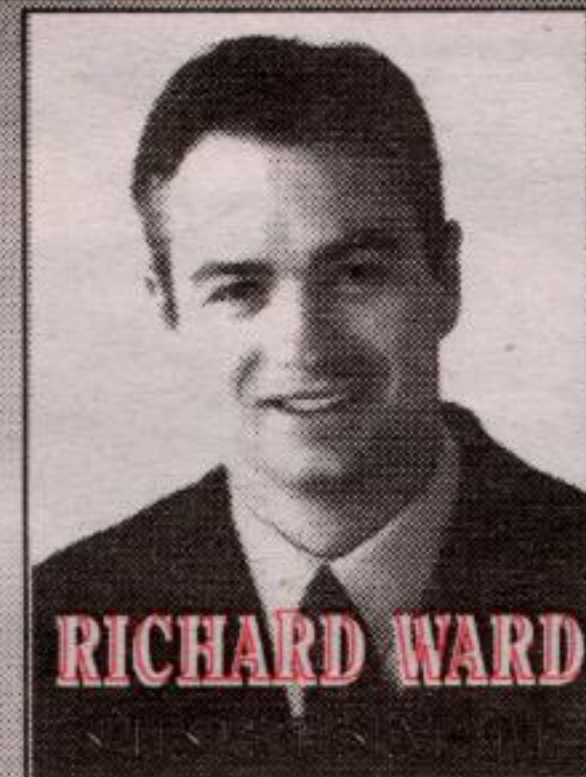
519-853-2086
1-888-833-1945

RE/MAX

BLUE SPRINGS REALTY (HALTON) CORP.

DIRECT LINE: 519-821-9560

www.home-ward.com



RICHARD WARD

519-856-4348
1-888-656-4348

e-mail: barnstaple@aztec-net.com or rward9560@home.com

LEADERS AND ACHIEVERS!



Elegance in stone. Approx. 7500 sq. ft. of luxury on expansive 2.3 landscaped estate lot setting. Backing onto forest & open countryside, 19 spacious rms, slate, hardwood and granite floors, coffered and tray ceilings, entertainers liv & din rm, ultimate main fl master bedrm with his & hers ensuites and walk-in closets, lounge area plus walkout to deck with hot tub, in-law suite, special surround sound theatre rm, 8 baths, 4 car garage plus so much more! Call **Wendy* Barnstaple**.



NEW

EXECUTIVE VALUE

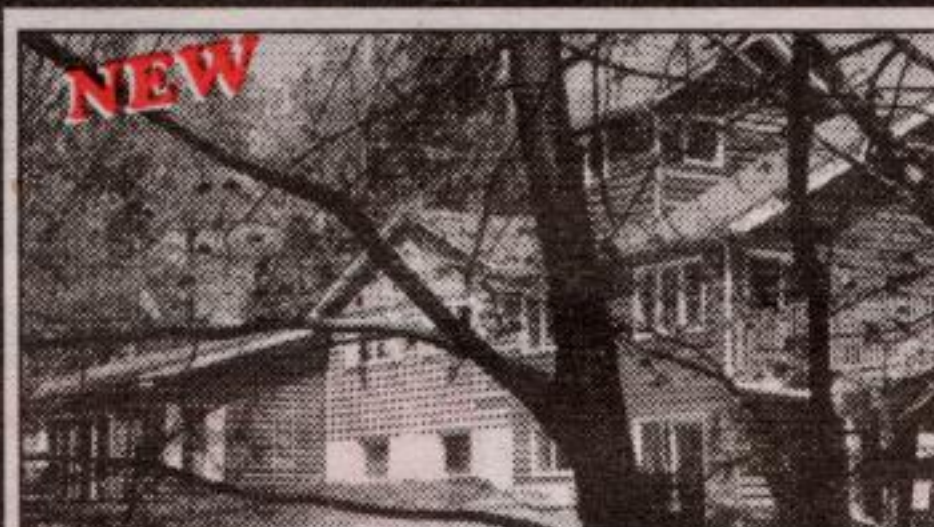
\$448,500. Upscale estate lot setting, 5 bdrms, dream kitchen with oak cabinets, breakfast room with log burning fireplace, sep. din. rm. with bay & french doors., liv. & din. with hardwood flrs., 3 full baths, beautifully finished basement with pool table rm., entertainment rm, den, main floor office. Just a great deal! Call **Larry* or Wendy* Barnstaple**.



\$194,500

CHARMER IN GUELPH

Absolutely gorgeous 2 story home in desired South end location. Just minutes to the 401, Go Transit and Shopping. many upgraded features and beautifully landscaped gardens. Great price and great location!! Call **Wendy* or Richard***. www.home-ward.com

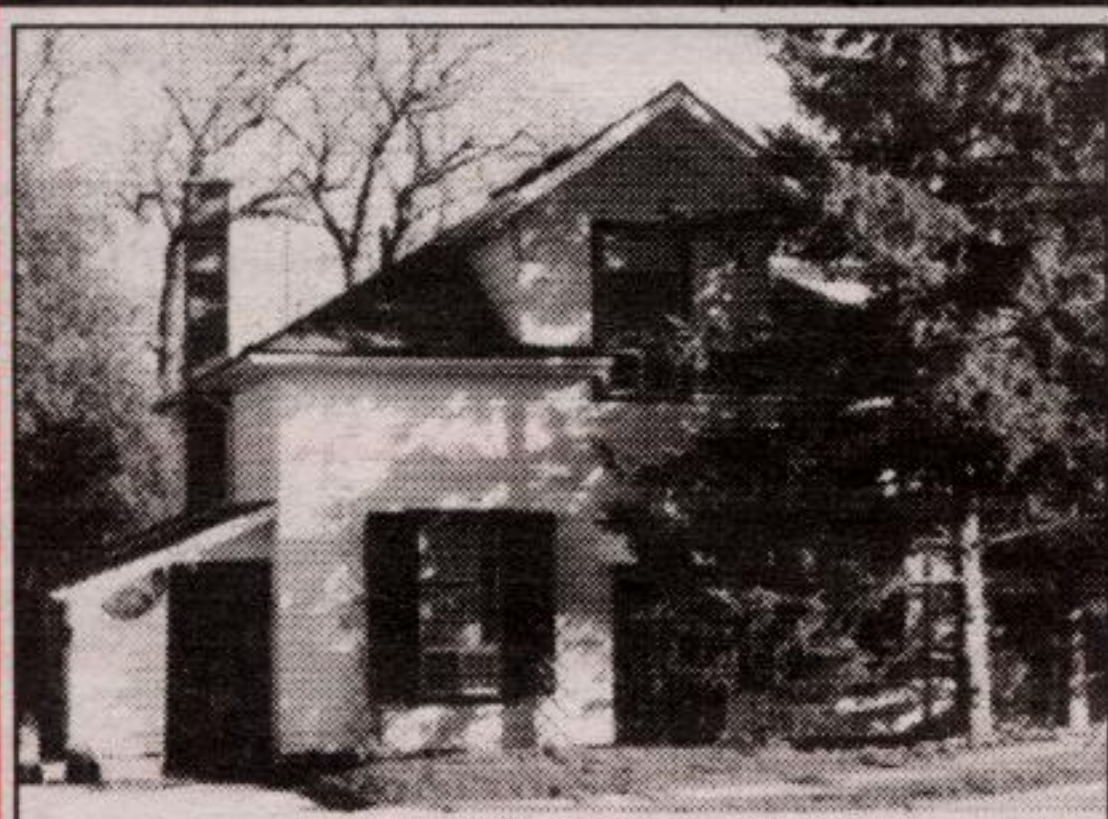


NEW



THE RIVER RUNS THROUGH IT!

12 1/2 acres of private eden, mature forest, trails, insulated 3 bay detached shop/garage with hydro, heat & concrete floor. 4 bedroom home with cathedral ceilings, fireplace, new addition 2001 plus kidney shaped indoor pool. Call **Larry* or Wendy* Barnstaple** at 905-877-5211 or 905-877-1237. JUN-02



QUIET HAMLET!

\$199,900. Six room one and one half storey charm and character home on ravine lot 68 ft. x 118 ft., walk to Credit River, enjoy long views of Caledon Hills, walk to local shops, entertainers liv & din room, office or music rm. Lots of knotty pine, wood trim & wainscoting, full basement, lrg porch with walkout to large deck. Do not miss this one! Call **Larry* or Wendy* Barnstaple**.

SPE-02



NEW

EXECUTIVE BUNGALOW

Wow! This home is gorgeous! Located in the picturesque village of Rockwood close to conservation area with easy access to 401 and Milton. Well maintained bright clean brick "Charleston built" bungalow with a full finished basement that could be used as an inlaw suite or rental. Covered porch area and formal dining room make this home an entertainer's delight. Shows 10+. Don't wait call **Richard* or Wendy*** today.



NATURALIST'S PARADISE

Immaculate brick bungalow nestled well off the road and surrounded by 15.7 acres of rolling land with hayfield and stream. This home is bright and inviting. Beautiful oak kitchen cabinets, spacious living room with floor to ceiling "blue marble" fireplace. The octagonal solarium allows you to enjoy the outdoors from indoors most of the year round. Located in one of the most desired country locations. So close to the 401 and GO Transit, this is one of the prettiest spots in Milton! Call **Richard Ward***. www.home-ward.com



NEW PRICE

PERFECT, PERFECT, PERFECT!

This gorgeous raised bungalow sits on an enormous, fenced, pie-shaped lot in a quiet subdivision. Beautiful professional redecorating showcases top quality upgrades including a new eat-in kitchen, lovely bath and inviting recreation room. Central azir, central vac, four appliances, hardwood floors and a huge master bedroom with ensuite privileges are just a few of the many features. Three bedrooms plus a fourth in the basement means lots of room for growing families. Immaculate! This one is a winner! Call **Wendy* or Larry* Barnstaple**.



SOLD

DON'T MISS THIS ONE!

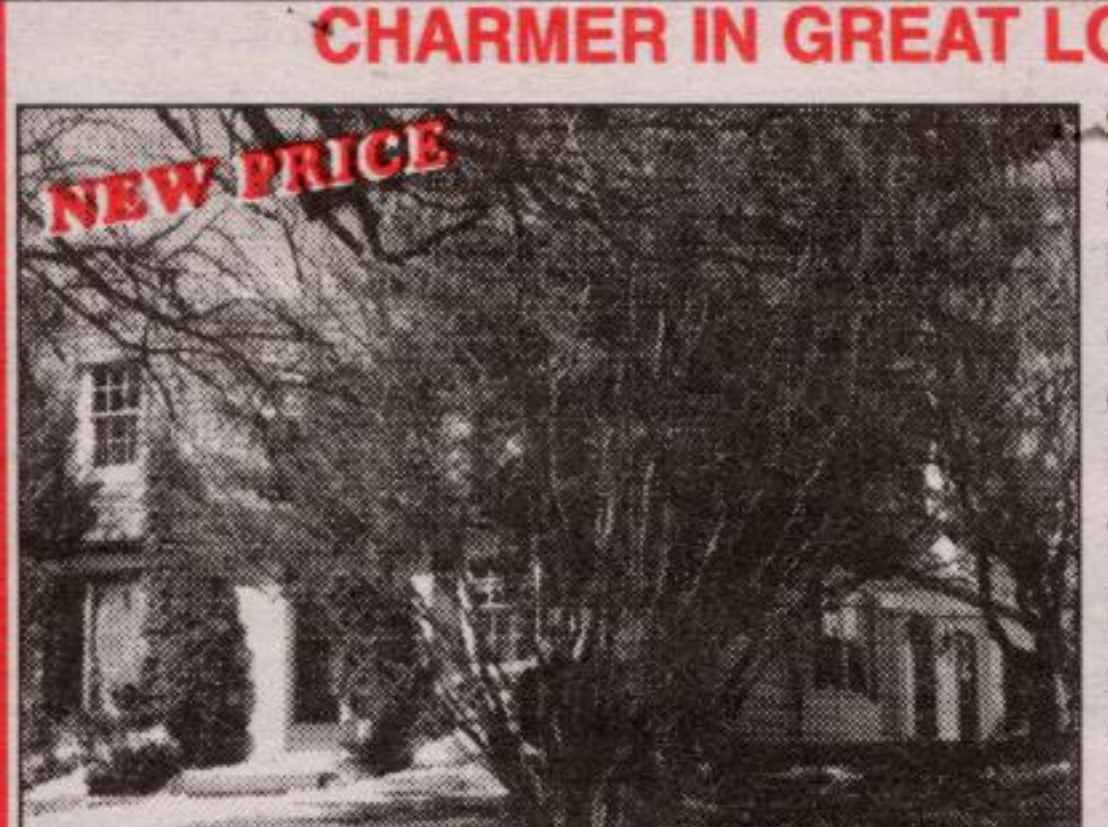
Exceptional all brick, almost new, large fam. kit. with patio doors to yard, entertainer living/dining with vaulted ceiling, walkout to insulated gar., two 4 pc. baths, huge fin.. loft room with skylight, gas heat, great basement to finish. Call **Wendy* or Larry* Barnstaple** DOWPRI-01



\$244,500

GORGEOUS GUELPH

Gorgeous 1842 sq. ft. 2 storey home located on a quiet Crescent in Prestigious Pine Ridge East. Bright, spacious open concept with loads of upgrades. Easy access to Highway 401. Call **Wendy* or Richard***.



NEW PRICE

CHARMER IN GREAT LOCATION!

\$249,900 4 bedroom, 2 storey on paved road, huge family kit., entertainers living and dining room, floor to ceiling Br. fireplace, 2 bathrooms, very private treed lot with pond, oversized two car garage, main fl. laundry. Call **Larry* or Wendy* Barnstaple**. DHA-01



NEW

COUNTRY DELIGHT!

\$269,900 three bedroom, brick bungalow on beautifully treed landscaped half acre lot, hardwood floors, large eat-in kitchen, 1 & 1/2 baths, log burning fireplace with insert, lots of parking, minutes to town, golf course, GO train & 401. Call **Larry* or Wendy* Barnstaple**. COL-02



NEW PRICE \$649,000



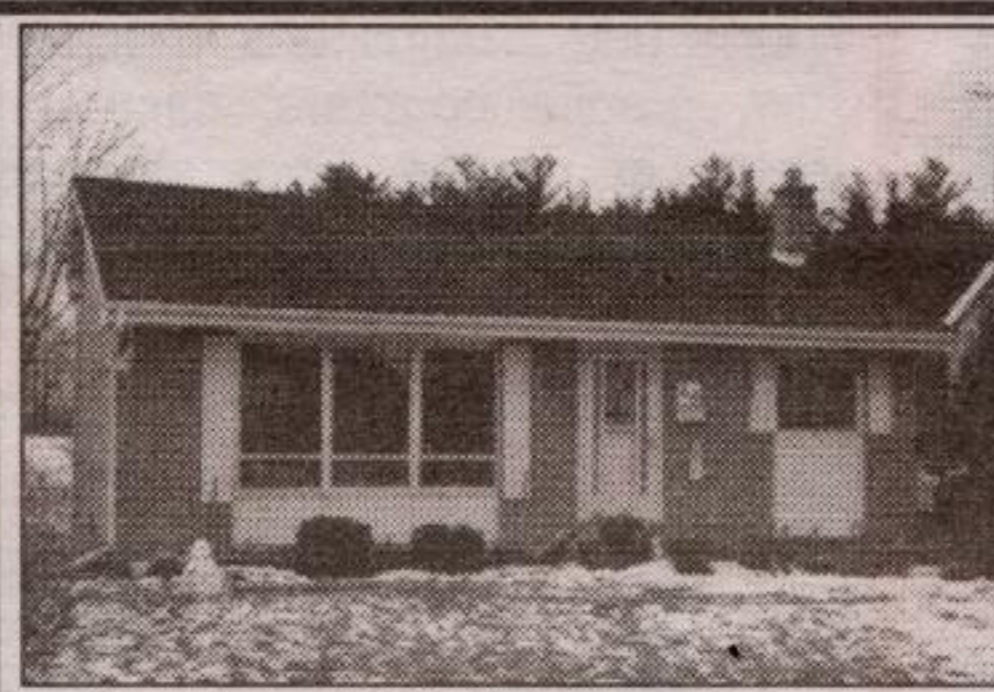
VICTORIAN ON 173 ACRES

Great property for landing strip or race track. 173 scenic acres, tributary to Eramosa River, exceptional pond, original bank barn plus several modern barns - some insulated, workshop, home features fireplace, charming original trim, pine and maple floors. Call **Larry* or Wendy* Barnstaple or Richard Ward***. MAR-00



AMAZING CONTEMPORARY

\$479,000. 5 acre forest treasure secluded in mature hardwood forest, entertainers living & dining with log burning fireplace & panoramic views of forested valley, solarium room, separate guest suite, majestic master bedroom with spectacular ensuite featuring tub side gas fireplace. Walkout lower level. Call **Larry* or Wendy* Barnstaple**.



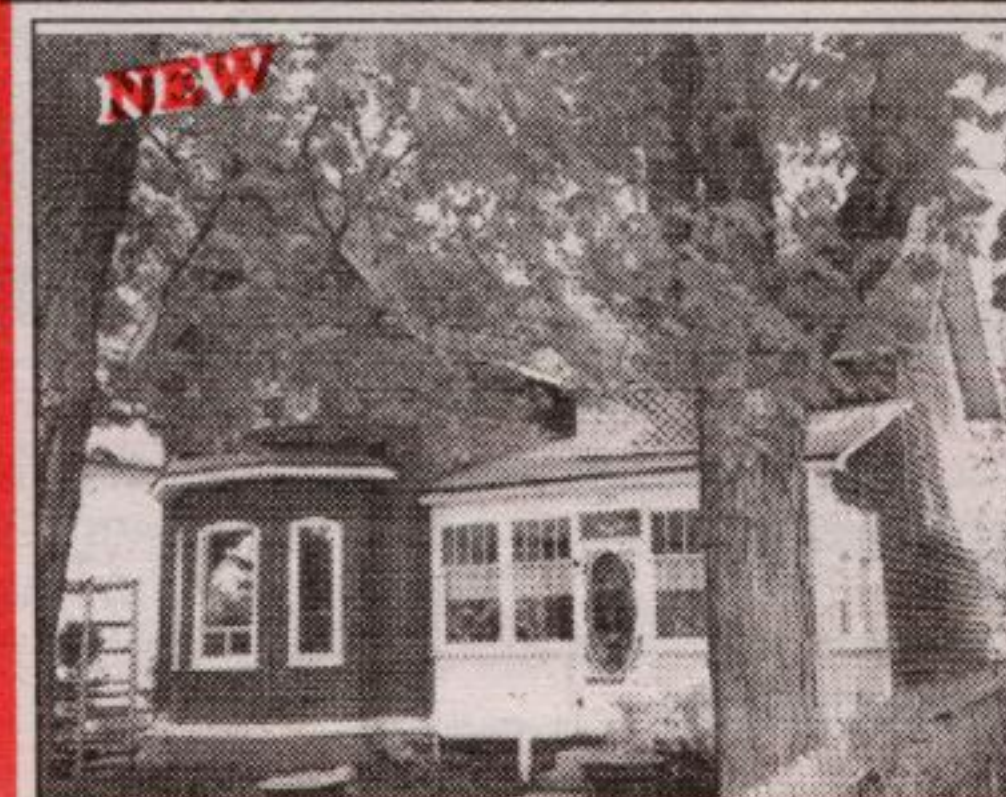
TRI-LEVEL ON EXPANSIVE LOT

\$189,900. 4 bedrooms, hardwood floors, country kitchen with large breakfast area, walkout to spacious yard, patio doors to patio deck, rec room, large 3 tool sheds, great long views. Call **Larry* or Wendy* Barnstaple**.



1848 HISTORY & CHARM

Quiet hamlet setting on west side of Georgetown, solid brick on quarter acre landscaped lot with detached 2 car garage, exceptional hemlock floors beautiful old baseboards and trim, solarium style breakfast booth, entertainers dining rm., living rm., with floor to ceiling fireplace & terrace doors, 9 1/2' ceilings, sunken fam. rm. with gas fireplace, study, main fl. laundry, 3 baths plus so much more. Great access to "GO", 401 & 407. Call **Larry* or Wendy* Barnstaple**.



NEW

WIND IN THE LEAVES

Wonderful 3 BR century home. Located on quiet cul-de-sac, backing onto parkland. The house features an exceptional main floor bath & entertainers diningroom. An abundance of original wood trim and beautiful restoration. Call **Wendy* or Larry* Barnstaple**.



HORSE FARM! QUIET COUNTRY ROAD!

54 acre farm with rolling land, tributary to Grand River, beautiful long views, ideal Erin location, modern open concept 5 bedrm home with lots of charm & character, walkout basement apt., 50 ft x 32 ft garage, 14 stall horse barn with water, hydro & tack rm, direct access to "GO" & 401, close to golf & university, do not wait! Call **Larry* or Wendy* Barnstaple**. SHA-02



PICTURE PERFECT!

Beautiful century plus Victorian on 4 and a half acre lot. Located southwest of Georgetown, close to GO transit, 401 and 407. Privately secluded treed lot with exquisitely landscaped gardens. This home boasts floor to ceiling fieldstone fireplace, original trim, high baseboards & pine flooring. Second structure perfect for workshop, studio or additional office space. A nature lover's paradise with old world charm. Don't wait. Call **Larry* or Wendy* Barnstaple** today!

www.barnstaplehomes.com www.HOME-WARD.COM

www.home-ward.com www.HOME-WARD.COM www.barnstaplehomes.com www.BARNSTAPLEHOMES.COM