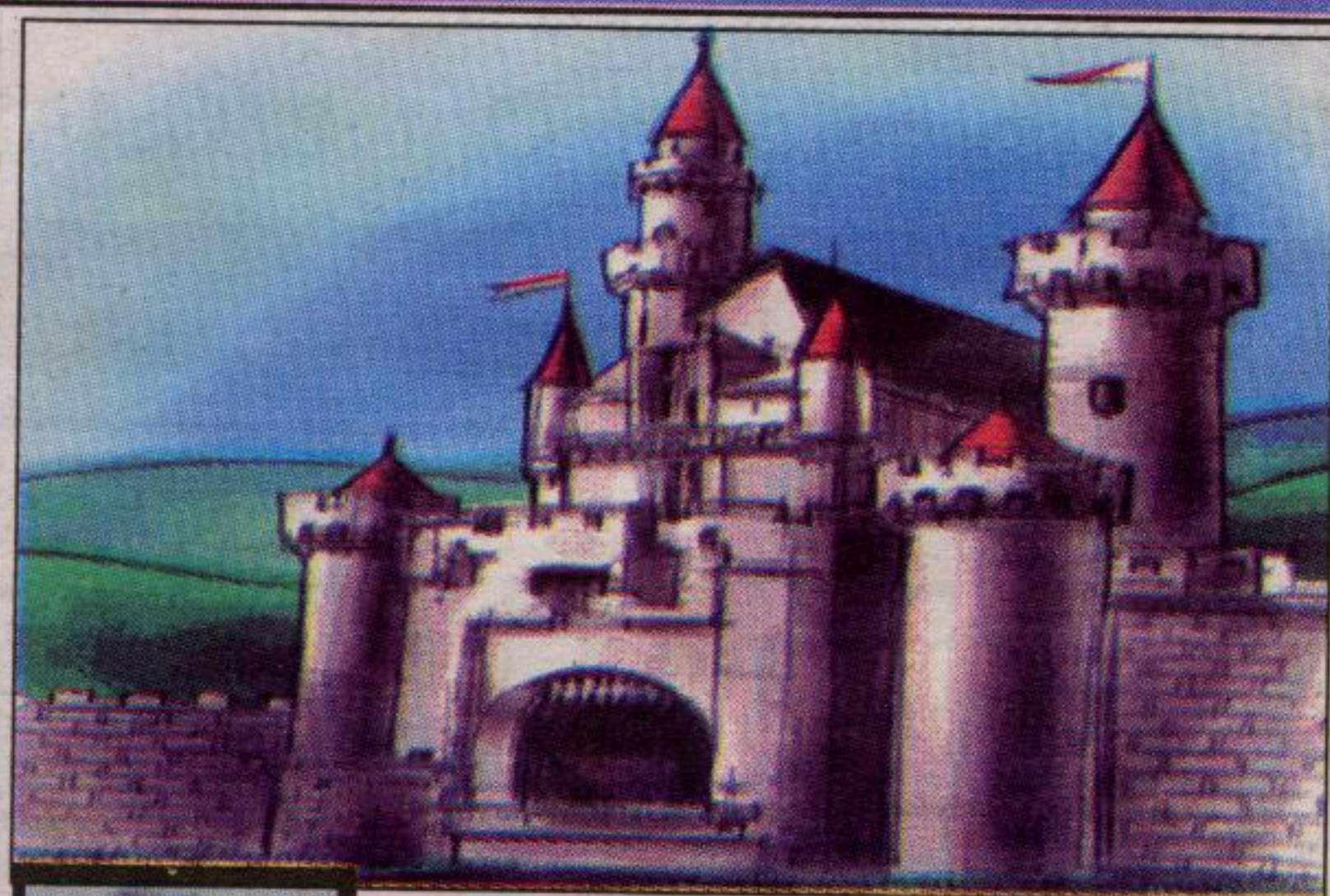


# FEATURE HOMES



**TERESA CROOKE\***  
Sales Rep.  
(905)  
877-5211

## THINKING OF SELLING YOUR CASTLE?

ALL MY SERVICES ARE GUARANTEED IN WRITING  
Call Today For A **COMPARATIVE MARKET ANALYSIS ON YOUR CASTLE**

**RE/MAX** BLUE SPRINGS REALTY (Halton) CORP.  
e-mail: tcrooke@trebnet.com



**CAROLE D. BUDWORTH**  
Sales Rep.  
(905)  
878-8101  
TOLL FREE  
1-800-514-3316

**\$429,900**

## CAMPBELLVILLE

Stunning 2 1/2 acre totally private setting in sought-after Campbellville area. Custom built 2 storey home in 1990 with breakfast rm, main floor fam rm with FP & walkout, main floor den, 2 car garage, hardwood, ceramics, new carpet, maintenance free decks. Pond & 16 Mile Creek running through property. Gardener's delight, wildlife abounds.

**ROYAL LEPAGE**

388 Main St., Milton



**LYNN DREWRY\***  
Sales Rep.  
(905)  
877-5165  
(Local/Toronto)

## CHARMING CAPE COD PARK AREA

- White picket fence on wonderful mature lot
- 3 + 1 Bdrm home w/character of yesteryear
- Sep. Living room & Dining rm w/hardwood
- Fireplace and mantel, w/o to backyard
- Eat-in country kit, b/i laundry & pantry
- Basement w/Rec room, 4th bedrm/office
- Incredible mature gardens, lrg deck & patio

**Johnson Associates** REALTOR  
PRESIDENTS CIRCLE



**CAROLE D. BUDWORTH**  
Sales Rep.  
(905)  
878-8101  
TOLL FREE  
1-800-514-3316

**\$569,900**

## COUNTRY BUNGALOW

Fantastic rural estate subdivision custom bungalow on 5+ acres. 3+2 bedrooms. 3 full baths, family room, sun-room, 4 fireplaces, hot tub, great decks, double garage, walkout to lower level. Don't wait - call today!

**ROYAL LEPAGE**

388 Main St., Milton

**OPEN HOUSE**  
SUNDAY MAY 19, 2-4 PM  
15238 ARGYLL RD., GEORGETOWN



**NORM PAGET\***  
Sales Rep.  
(905)  
877-5211

## COUNTRY GLEN BEAUTY

4 bedrooms, 3 baths, 2185 sq. ft. all brick Country Glen home. Beautifully decorated throughout. Spacious island kitchen, w/o to rear fenced yard. Main floor family room w. gas fireplace. Entrance partially opens to second floor. Main floor laundry, access to side and garage. Call Norm\* today.

**RE/MAX** BLUE SPRINGS REALTY (Halton) CORP.



**SUE SPIZZIRI**  
Real Estate Advertising Sales Rep.  
(905)  
873-0301

Tell Your Agent to call

**Sue Spizziri**  
(905) 873-0301

**The Independent & Free Press**

# Virginia Brazeau R.N.

#1 IN MILTON FOR ROYAL LEPAGE... AGAIN!

TOP 1% IN CANADA... AGAIN



\*JOSEPH BRAZEAU, BA \*RUTH KERR, BA, MA

VIRTUAL TOURS: [www.Milton-RealEstate.com](http://www.Milton-RealEstate.com)  
EMAIL: [VBrazeau@RoyalLePage.ca](mailto:VBrazeau@RoyalLePage.ca)

**ROYAL LEPAGE**

**905-878-8101**

388 MAIN ST. E., MILTON

Royal LePage Real Estate Services Ltd., Broker

**FLOWING STREAM THROUGH PROPERTY!**  
In village setting just mins to 401! Upgraded & well-maintained! Gleaming hrdwd flrs, tpcl windows & carpets, freshly painted. Stream w/foot-bridge & mature trees. Oversized off garage, shed, dog run. \$292,000. Country living yet close to all conveniences!



**MINUTES TO 401/CAMPBELLVILLE!**  
Mature trees provide privacy from road/neighbors. Stone 5-bdrm Fr country exec on 2 acres. 2-storey great rm (firepl & Fr dis to patio) opens to kit w/ brkfst rm & expansive din rm. Marble firepl in oak study. Main flr master w/ huge ens & walkout. \$598,000. Virtual Tour! Excellent Value!



**4-BEDROOM COUNTRY BUNGALOW**  
Lovely executive of exceptional quality! Oak flrs, solar-tinted windows, skylts, UV H2O system. Ceramic/oak kit w/ brkfst area & walkout to cov'd deck open to fam rm w/ firepl! Beautifully fin'd lower level w/ bdrm, bath, wdstv. \$429,900. You deserve the luxuries this home offers! Virtual Tour!



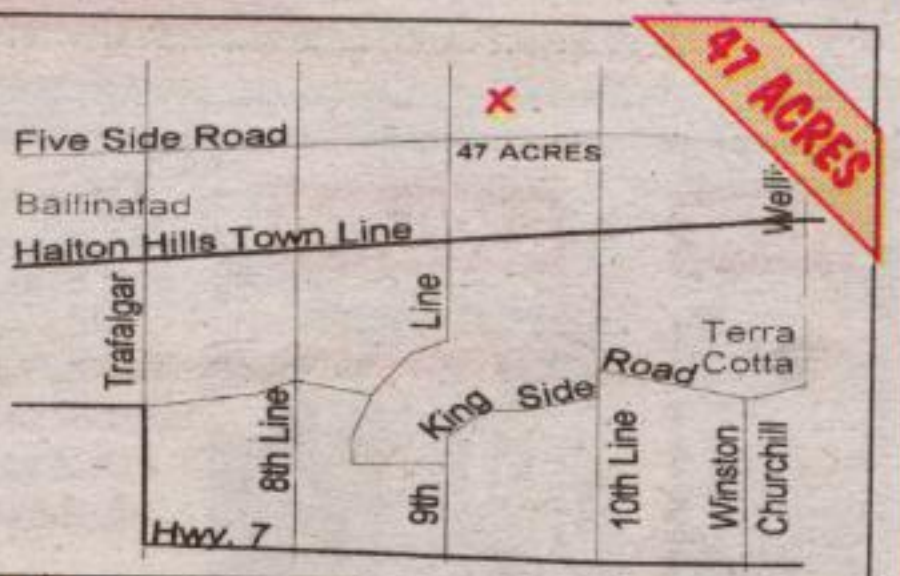
**YOUR OWN 10-ACRE PARK!**  
Incredibly well-maintained! 4,000 sq ft (aprx) 4-bdrm w/ wrought-iron entry gates. 4 firepl, 9 skylts, gleaming hrdwd flrs. Master: stone firepl, walkin closet, luxurious study, private balcony. Spacious & sunny oak eat-in kit w/ skylts, isld, brkfst bar. \$599,000. 10 mins to 401! Virtual Tour!



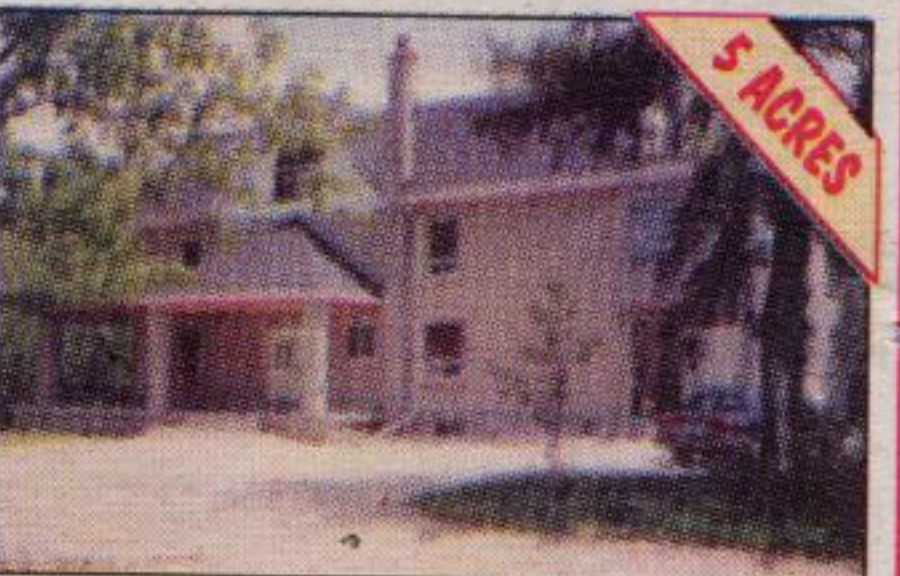
**'LOG' HOME ON 5 ACRES WITH POND!**  
15 mins to 401/Hwy 25! 5-bdrm on hill-top for breathtaking views! Gourmet country kit & liv rm w/ wdstv-both w/ Fr dr walkouts to deck overlooking pond, mature trees, rolling countryside. Spacious master w/ ens & walkin closet. Wood flrs thru-out. \$449,000. Luxury & refinement w/ rustic flair! Virtual Tour!



**47 ACRES WAITING FOR YOUR DREAM HOME!**  
Build on a hilltop for panoramic views, in the woods for privacy, overlooking a peaceful pond & flowing stream or in a tree-lined meadow. It's all here just North of Ballinacra w/quick access to 401/Trafalgar. \$299,000. Everything you could ask for in a country property!



**5 ACRES IN PHASE II EXPANSION**  
of urban Milton East. Reno'd century home w/ some mature trees, pond (not spring-fed). Hrdwd/ceramic flrs. Nanny suite on 3rd flr. 20'x50' wrkshp/garage. \$999,000. Surrounding 96 acres also available. Exceptional investment property!



**1 KM N OF 401/GUELPH LINE**  
Well-built 4-bdrm exec set back from rd. Full in-law suite at ground level w/ sep entrance, patio. Oak, ash flrs, hand-crafted woodwork thru out. Ceramic kit w/ grnhs brkfst area open to fam rm w/ wdstv & balcony overlooking landscaped grounds. 40'x60' bank barn w/ heated wrkshp. \$729,000. Incomparable quality & workmanship. Virtual Tour!



**20 MINS TO 401/GUELPH LN.**  
Woods, pastures, ponds, fields! Handsome stone exec at end of long winding lane for perfect privacy. Open-concept kit/fam rm w/brkfst rm, ceramics, 'Barzotti' cpbds, brick tp, centre isld, w/o to sun rm & wrap-around deck overlooking pond, 1/2 pool & landscaped grounds. 4 fireplc, in-law suite. 2-storey 10-stall barn. \$1,100,000. A country estate with everything to offer! Virtual Tour!



\* SALES REP