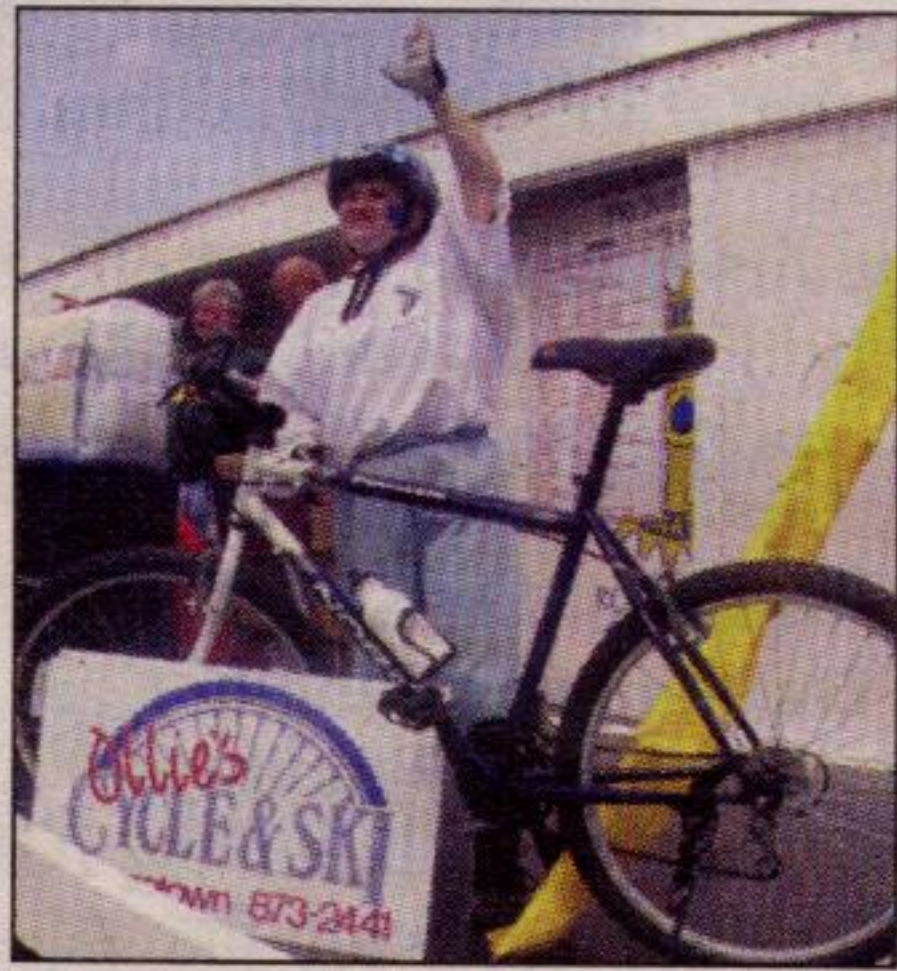




## Rolling along

Brothers Alex and Tyler Frost (left) were among the dozens of cyclists who took part in Sunday's annual Community Living North Halton Bike-a-Thon which wound its way through the streets of Georgetown. (Below) Bonnie Downey was the winner of the first-place bike prize, donated by Ollie's Cycle & Ski of Georgetown, as she collected the highest pledge amount (\$1,057).



Photos by Shawn McAlpine

# UPPER GLEN SOIL CO.



- Screened Top Soil
- Triple Mix
- Peat Moss (Black Loam)
- Manure (Screened)
- Sand, Gravel, Screening

Large and small quantities

**FOR PICK-UP OR DELIVERY**

**Evenings 905-877-8145**  
**Daytime 905-703-0503**

## STRICTLY FISH

POND FISH • SNAILS  
• TADPOLES • KOI

**ALL SIZES IN STOCK NOW!**

**LAGUNA REPRESENTATIVE IN OUR STORE**

Sat. May 11/02 10:30 am - 2 pm  
to answer all your pond questions

130 Guelph St., Unit #1  
Georgetown 905-877-3474

## Churches & Temples

### Georgetown Alliance Church

"A growing family of people"

Sunday Worship\*  
at 8:30 & 10:30 AM.

\* A Nursery & Sunday School is offered during both services

290 Main St. (S. of Maple)  
(905) 873-0249

Take time to  
worship at one  
of Halton Hills'  
Churches or  
Temples

### KNOX PRESBYTERIAN CHURCH

116 Main St. S.  
MINISTER - ROBERT SPENCER  
MORNING WORSHIP &  
SUNDAY SCHOOL  
11 A.M.  
TIME FOR REFLECTION  
AND RENEWAL  
Ministers Office 877-2848  
Secretary's Office 877-7585

### St. Alban's Anglican Church

SUNDAY WORSHIP  
8:00 a.m. Holy Eucharist  
10:30 a.m. Holy Eucharist  
(Church School & Nursery)  
877-8323  
537 Main St., Glen Williams  
Pastor: The Rev. Michael Calderwood

### GEORGETOWN CHRISTIAN REFORMED CHURCH

welcomes you!  
Pastor Mark Verbruggen  
Sunday Worship Services: 10:00 am & 6:00 pm  
11611 Trafalgar Road (north of Maple Avenue) 877-4322  
www.gcrc.on.ca

### NORVAL Presbyterian Church

Service & Sunday School  
11:15 a.m.  
905-877-8867  
499 Guelph St., Norval, Ont.

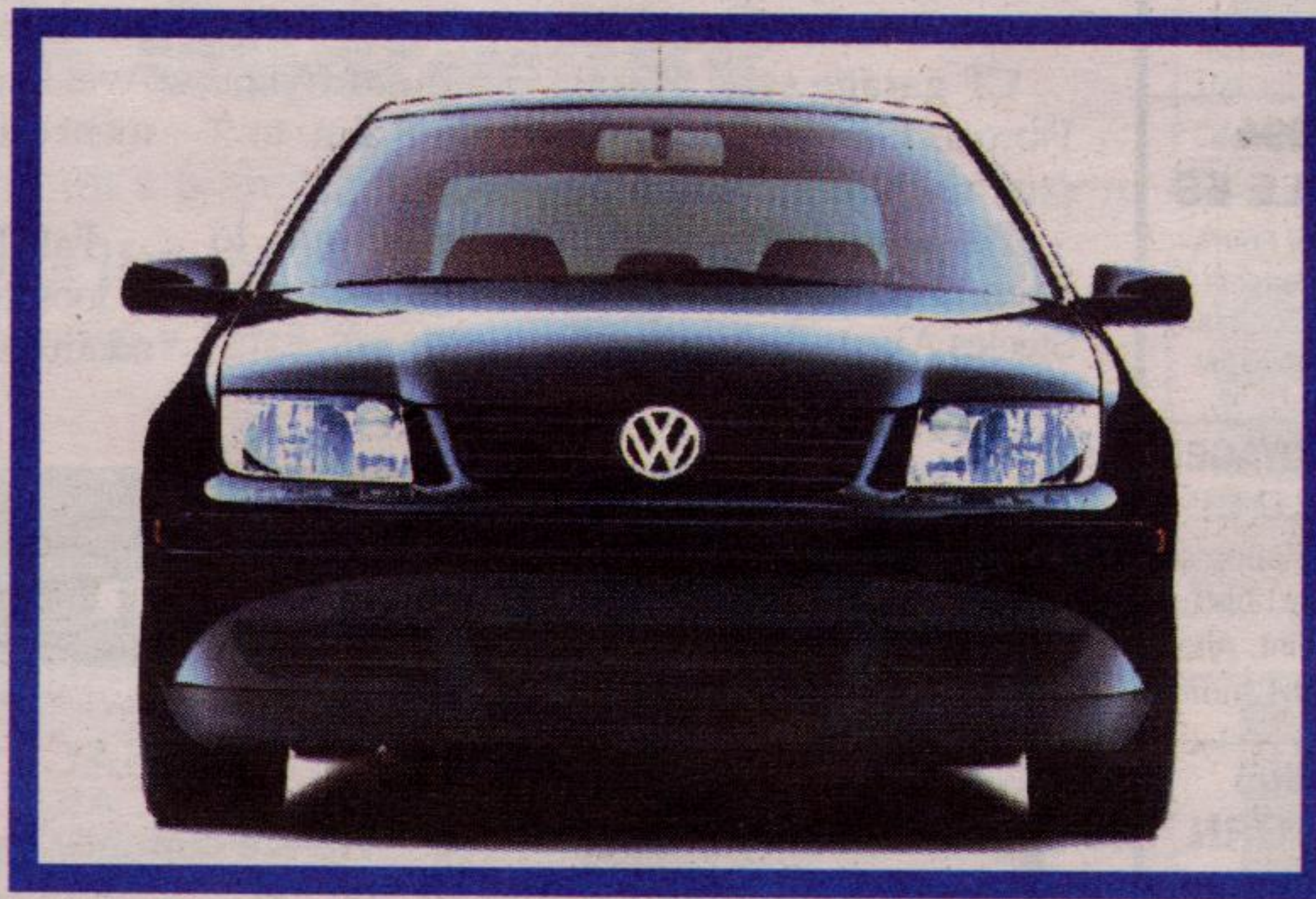
### MOUNT ZION FULL GOSPEL MINISTRIES

(Affiliated with Gospel Crusade of Canada Ministries)  
A Life changing ministry  
"But seek ye first the kingdom of God, and his  
righteousness; and all these things shall be added unto you."  
BALLINAFAD COMMUNITY CENTRE downstairs  
ALL WELCOME Sunday Worship 11a.m.  
PASTOR ANDREW G. PATON (COUNSELLING AVAILABLE)  
(519) 853-5657

## Explore God!

relaxed atmosphere .... no pressure  
@ The Rock Vineyard  
Christian Fellowship

Sundays 10am Cedarvale Park Building Main & Maple  
Georgetown 905-702-7605



## What will you do with the money you save?

TDI Manual L/100 km

5.6 4.4

City Highway

TDI Automatic L/100 km

6.9 4.9

City Highway

### Annual fuel savings for Jetta TDI Automatic compared to:

Daily Commute:	150 km	200 km	250 km
Chrysler Sebring (2.4L Automatic)	\$762.24	\$1,016.32	\$1,270.40
Honda Accord (2.3L Automatic)	\$683.97	\$911.96	\$1,139.95
Mazda Protégé (1.6L Automatic)	\$605.70	\$807.60	\$1,009.50
Nissan Altima (2.5L Automatic)	\$757.11	\$1,009.48	\$1,261.85
Oldsmobile Alero (2.2L Automatic)	\$636.50	\$848.66	\$1,060.83
Subaru Impreza AWD (2.0L Automatic)	\$1,022.71	\$1,363.61	\$1,704.51
Toyota Camry (2.4L Automatic)	\$636.50	\$848.66	\$1,060.83

Along with improvements in diesel science that include quieter engines and more power, Volkswagen's advanced TDI engine can cover more than 1,000 kilometres on a tank of fuel. With special finance and lease rates available through the end of May, you can save today, while your new Jetta TDI will ensure that you save on fuel for years to come.

## Georgetown Volkswagen

Drivers wanted.®



199 Guelph Street - 905.877.5285

Mon - Thurs 9:00 am - 8:30 pm; Fri 9:00 am - 6:00 pm; Sat 9:00 am - 5:30 pm

Formed consumers always read the fine print. Fuel economy ratings for the Jetta TDI, Chrysler Sebring, Honda Accord, Mazda Protégé, Nissan Altima, Oldsmobile Alero, Subaru Impreza AWD, and Toyota Camry from the EnerGuide 2002 Fuel Consumption Guide produced by Natural Resources Canada. Fuel savings based on fuel required to travel the Daily Commute distance 260 times per year, assuming the commute is 15% city driving and 85% highway driving. Cost of fuel based on April 30, 2002, average gasoline price of \$0.658 per litre and average diesel price of \$0.620 per litre. Published by S&P Financial Services Inc. for the Toronto area. Actual mileage may vary.