



Some town groups got a jump on tomorrow's cleanup last weekend by holding cleanups. (Above) Kelly Bowen takes a break on a picnic table left in the river at Cedarvale Park during the Halton-North Peel Naturalist Club. (Right) Andrew Kellman and Don Noble spread compost during a cleanup at the Willow Park Ecology Centre.



Photos by Shawn McAlpine

## Town groups plan massive cleanup tomorrow

Continued from pg. 1

Participants are asked to call Daphne Millar at the town's work yard, 905-873-2601, ext. 2610 to register their locations and arrange for garbage bags to be delivered. The town will then pick up the garbage for disposal on Monday.

Cleanup participants and locations are:

- Georgetown Horticultural Society in the Knox Church area, Main St. and Church St.
- Friends of the Old Seed House Garden, the park and pond area at Maple Ave. and Guelph St.
- Councillors Fogal and Chatten, CiB committee, Hwy. 7 between Norval and Hall Rd.
- Halton Recovery House, Trafalgar Rd. and Hwy. 401 interchange area
- Hornby Area Rate Payers Association, Hornby community, meet at the Hornby ball park at 9 a.m.
- Acton Library - Debra Burton, River St. and School Lane
- Fourth Line Group, Fourth Line, north of Hwy 7
- Acton Agricultural Society, Regional Road 25 around Speyside
- Acton Rotary Club, Hwy. 7 from Acton Arena to Sixth Line
- Laura Facca, Georgetown South's stormwater management pond
- University Womens' Group, the area around Argyll Rd. at Mountainview Rd. plaza
- King Pizza and Sub, the plaza on Mountainview Rd at Guelph St.
- Friends of Fairy Lake, the shoreline of

Fairy Lake in Prospect Park, Acton. Meet at the Boat House at 8:30 a.m.

- Glen Williams Town Hall, Glen Williams Town Hall area. Meet at the hall at 10 a.m.
- Rob Pierce and neighbours, Eighth Line between Wildwood Rd. and 22 Sideroad
- The Downey family, on Sixth Line north of Hwy. 7
- Marie Murray, on Cindebarke Terrace
- Dee Butwell, on Eighth Line North
- Colleen McLaughlin, on Mill St. to Mountainview Rd.
- Dina Gray, in the ravine area between Standish and Oak Sts.
- The Boleychuck family, in Hungry Hollow ravine
- Jeanne Dalgas, McNabb and Mill St. ravine area
- Peter Kent, at Centennial School
- Anne Marie LaRocque, in the Barber Dr. and Argyll Rd. area
- Central Esquering Ratepayers Association, Sixth Line between 15 Sideroad and Five Sideroad

Also on Saturday, Halton Region is holding a free tire drop off between 9 a.m. to 3 p.m. Halton residents are welcome to drop off up to eight standard passenger vehicle tires (rims included) at the Halton Waste Management Site, 5400 Regional Rd. 25 in Milton. While bicycle and wheelbarrow tires will also be accepted, commercial vehicle, truck and tractor tires will not. Donations to the Halton's food banks will be accepted, but not required.

—By Cynthia Gamble, staff writer

# NISSAN

ENJOY THE SAVINGS EVENT  
GIVES YOU MORE TO SMILE ABOUT.

### 2002 Nissan Sentra

2002 Carguide "Best Buy"



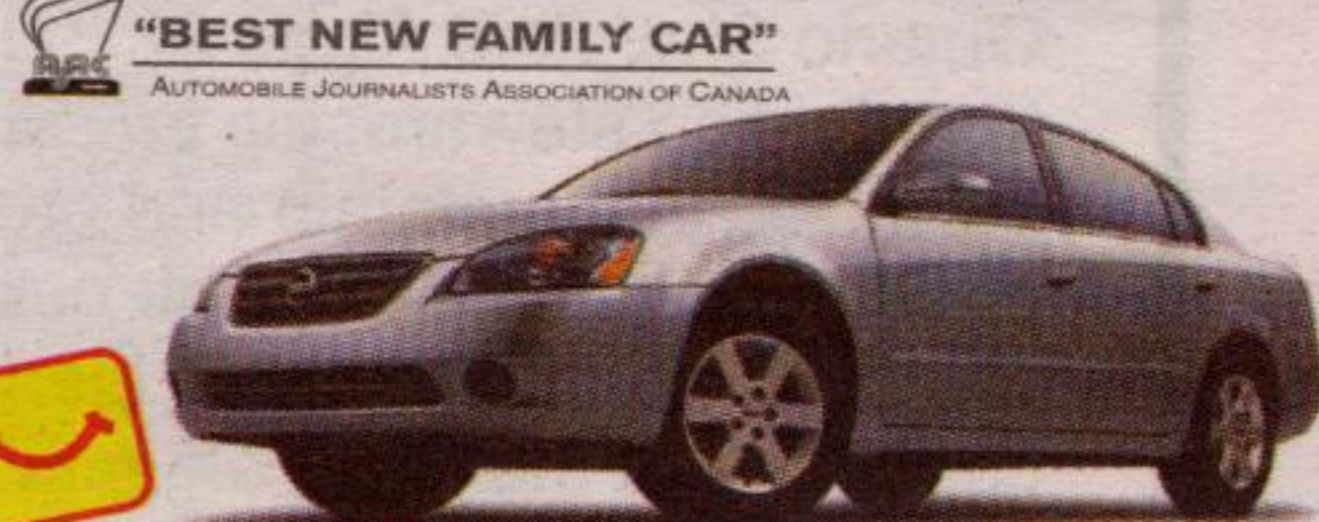
Lease Sentra XE WITH VALUE OPTION PACKAGE for **\$199** /mth.\* for 48 months, only \$1,298 down. Or choose **2.8%** Financing.

No Security Deposit O.A.C.

- 126-HP 1.8-litre DOHC engine • Air conditioning
- AM/FM with CD audio system with 4 speakers • 14" steel wheels
- Full wheel covers • 8-way manual driver's seat • 60/40 split folding seat • Centre console armrest • And much, much more...

### 2002 Nissan Altima

2002 Canadian Car of the Year



Lease Altima 2.5 S WITH AUTOMATIC for **\$319** /mth.\* for 48 months, only \$2,995 down.

Includes Destination and Delivery.

- 175-HP 2.5-litre DOHC engine • Air conditioning
- AM/FM with CD audio system and 6 speakers • Power heated outside mirrors • 60/40 split rear seat w/lock • 8-way manual driver's seat • Tilt and telescope steering column • And much, much more...

### 2002 Nissan Maxima

8 consecutive years on Ward's Autoword list of 10 best engines



Lease Maxima GXE WITH AUTOMATIC for only **\$379** /mth.\* for 48 months, only \$3,590 down. Or choose **2.8%** Financing.

- 255-HP 3.5-litre DOHC 24-valve engine • 4-speed automatic with gated shifter
- 16" alloy wheels • ABS • Dual power mirrors • HID Xenon headlights
- 8-way power driver's seat • Automatic climate control A/C with microfilter
- Power windows, locks, trunk/fuel release • Cruise • And much, much more...

### 2002 Nissan Pathfinder

"Chilkoot Edition" Only Available In Canada



Lease Pathfinder "CHILKOOT EDITION" for only **\$399** /mth.\* for 48 months, only \$5,199 down. Or choose **2.8%** Financing.

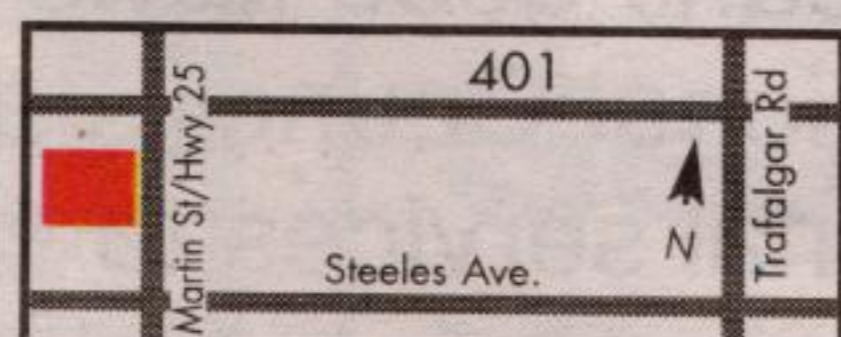
Includes Destination and Delivery.

- Includes over \$2,100 in additional value-added options.
- 4-speed automatic with overdrive • "All-Mode" 4-wheel drive (auto 4-wheel drive selector dial)
- Chilkoot Edition numbered plaque • Upgraded 150-watt Bose® CD audio system with in-dash 6-disc autochanger • 8-way adjustable driver's seat • Dark titanium-coloured side-step rails
- Steering-wheel-mounted audio controls • Upgrade interior trim • And much, much more...

Hurry In...The Enjoy The Savings Event Ends Soon

**NORTH END NISSAN LTD.**

610 MARTIN STREET, MILTON 905-878-4137



## SUPER SUDS PET STOP INC.



"We've moved & expanded to serve our clients better."

Bathing • Clipping • Grooming (All Breeds)  
Pet Supplies & Accessories • Puppy Programs

Now Available:

IAMS

whiskas

DICK VAN PATTEN'S  
Natural Balance

Eukanuba

Pedigree

**\$5.00 OFF Grooming**

Your Name \_\_\_\_\_

Tell a friend & they'll receive **\$5.00 OFF** too!

Then you get **\$5.00 OFF** your next groom.

Super Suds Pet Stop Inc.

905-877-8884

Expires May 31, 2002

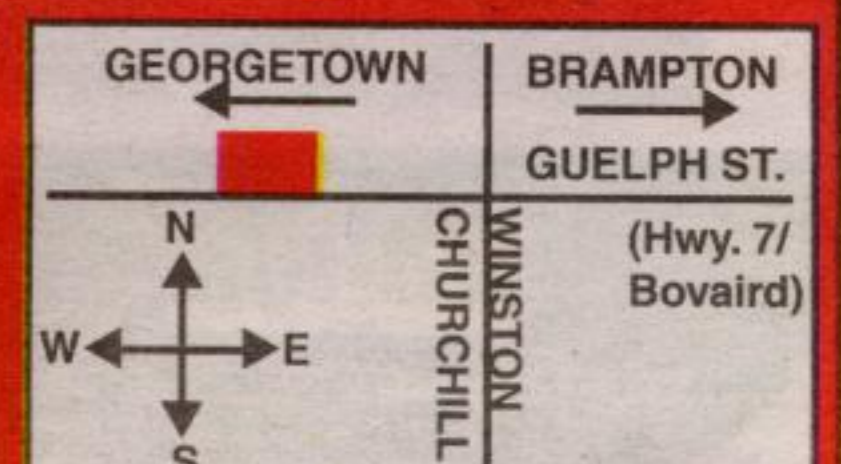
**\$5.00 OFF**

**\$5.00 OFF**

• Debbie Niedermuller • Ali Hughes  
"We supply you with all your pet's needs."

509 Guelph Street  
Norval

905-877-8884



Smart people always read the fine print. And they always wear their seat belts. Offers available for a limited time and may change without notice on new 2002 Altima S (T4RG72 AE00), 2002 Sentra XE 5-speed manual with Value Option Package (CAL652 BK00), 2002 Pathfinder "Chilkoot Edition" Automatic (5CRG72 AE00) and 2002 Maxima GXE Automatic (U4RG72 AA00). 2.8% purchase financing for 36 months available on Sentra/Pathfinder "Chilkoot Edition"/Maxima. Other finance rates available on other models. Financing examples: \$20,000 at 2.8% per annum equals \$579.86 per month for 36 months. COB is \$875.07 for an obligation total of \$20,875.07. \*48-month lease on Altima/Sentra/Pathfinder "Chilkoot Edition"/Maxima: 6.8%/3.7%/5.9%/5.8% ALR, down payment or equivalent trade of \$2,995/\$1,288/\$5,189/\$3,590. Leases based on a maximum of 96,000/78,000/96,000/96,000 km with excess charged at \$0.10/km. If the vehicle is financed at 2.8% and the cash purchase price is not taken, the effective interest rate is 2.8% for Sentra/Pathfinder "Chilkoot Edition"/Maxima. All offers are O.A.C. and exclude destination and delivery (Maxima/Sentra \$966/\$868 [included with Altima and Pathfinder]) (\$350 lease administration fee for Sentra). Licence, insurance, taxes and other Dealership charges are extra and must be paid at the time of transaction. See your Nissan Dealership for details. Offers cannot be combined with any other offers. Dealer may sell/lease for less. Not all vehicles are available at all Dealerships. Vehicles not exactly as shown. DRIVEN and the Nissan logo are trademarks of Nissan Canada Inc. Visit [www.nissan.ca](http://www.nissan.ca).