

Decorating: The Manor House style is a thoroughbred look that is always in fashion

Are you a slave to fashion trends? When your lifestyle magazine declares that "taupe is dead" do you rent a dumpster and make over your home from scratch?

Or do you prefer a more stable home environment—something that looks as if it's been there for generation after generation? Rich with memories and oh, so comfortable?

Now, here it is. It's called Manor House, and this description is taken from a book of great room styles created by Jane Lockhart and the Benjamin Moore Design Team, *Room Recipes—Cooking up Style with Color*. You'll find it, with other books from the same source, at your nearest Benjamin Moore retailer.

"For the Manor House style the key colors are all rich and intense," says Lockhart. "We used gold, navy, burgundy, forest green and dark brown. But style is a lot more than just colour—to achieve this look you should also think in terms of Old English motifs in fabrics and furniture, old books, antiques, photos from the family album presented in gilt frames, and as much leather as you can afford. One recommendation is to fill the room with oversized furniture or extra items. A crowded room can create a cozy, secure, atmosphere."

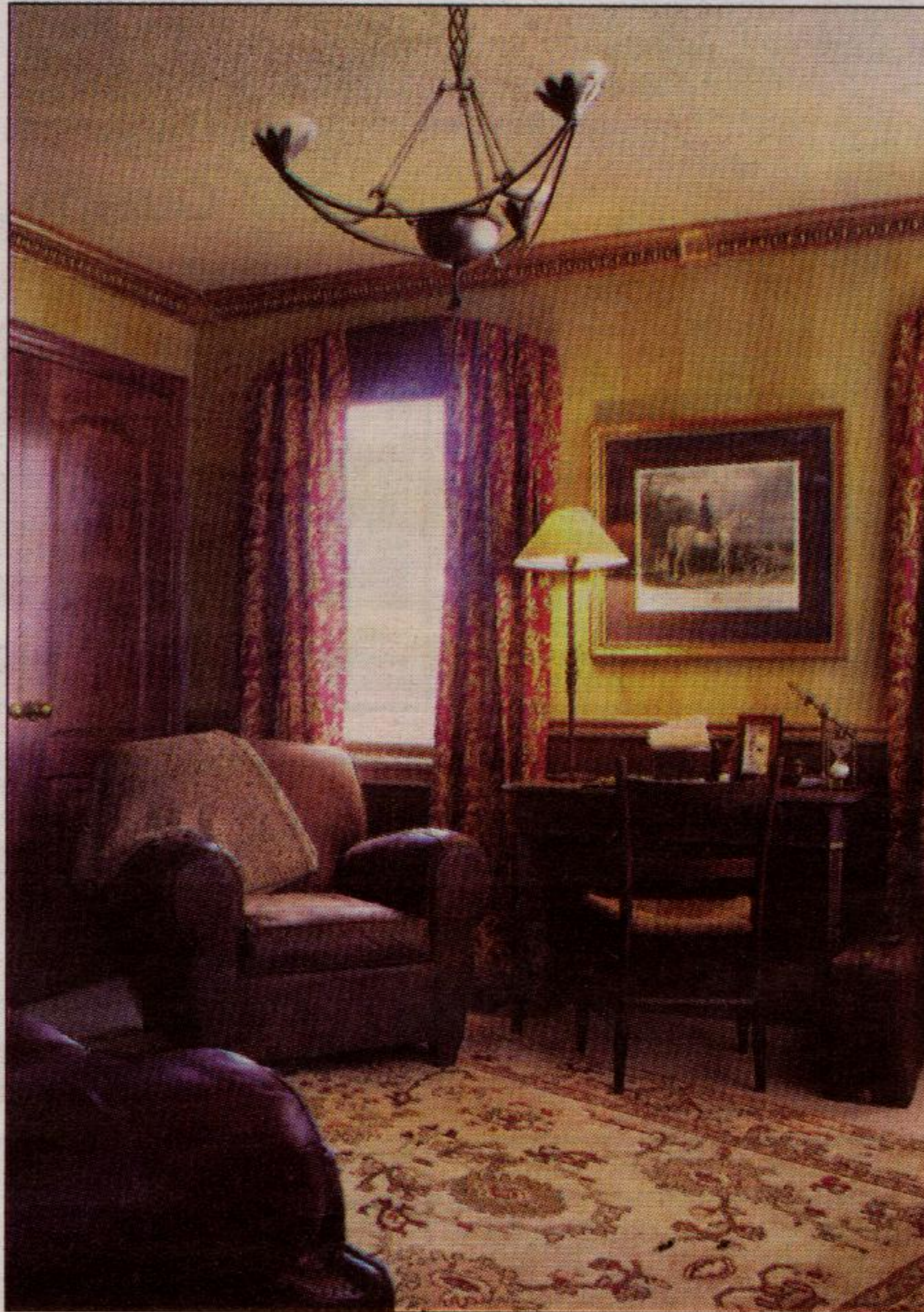
Is that leather, or is it paint?

Innovative paint techniques are used to create the impression of age. For example, your guests may well think that the walls are covered by a leather wainscoting below and satin wallpaper above, with an elaborate gilded crown molding running around the ceiling. But you know different—you know that the leather look is created by applying a base coat and letting it dry, then rolling on a different color, thinned with glaze. Before the glaze coat sets up you open a plastic drop sheet and press it, wrinkles and all, against the wall. As you peel it off the grain of leather miraculously appears.

The wallpaper, too, is painted, using painters tape to form the stripes and a dry-brush application technique to create the illusion of woven fabric.

The crown moulding is not the work of an Old Country master plasterer, it was bought by the yard from a local home decorating centre. Before you installed it you followed the Room Recipes instructions and sprayed it gold, then antiqued it with glaze.

"For a consistent style like this, first decide on a



The Manor House look is sophisticated and formal, with rich colours and aged materials. Select this look to create a formal elegant room that will always be in style.

color palette, then follow it in every detail," says Jane. "So, in Manor House, the light fittings, the furniture, the drapes, the pictures on the walls and the accessories all carry through the same rich colors. There are lots of opportunities to include your own personal touches in the form of family photos and souvenirs."

For your nearest Benjamin Moore retailer, call 1-800-361-5898 or see your yellow pages under Paint Retail.

—News Canada

Colourful words: what do they mean?

First, place your hands on the wheel. The colour wheel tells you a lot about the relationship between colours. It's a circular arrangement of all colours, in the order of the spectrum. It puts related colours next to each other and complementary colours across from each other.



Light blue, medium blue and dark blue are all the same colour or hue – blue.

A very simple colour wheel would show just the three primary colours, red, yellow and blue. More complex wheels show the in-between colours produced by mixing the primary colours in different proportions.

Though there's a lot of science behind the colour wheel, it also makes an easy-to-use tool for creating colour schemes for your home.

If you select a monochromatic palette, you will use one colour, and play variations on it. Light tones, dark tones. The effect depends on the colour you use: if it's red you'll create intensity and excitement. If it's gray you'll achieve sophisticated elegance.

With a monochromatic palette, a single colour is normally used in a number of different value—tints, shades and tones which are all variations on the selected hue.

Did you follow that? The sentence uses a number of words which have special meanings in the world of colour. If you anticipate talking about colour with a designer or colour professional, it's good to know the lingo.

Hue is the scientific term for what most people would loosely call a colour. Light blue, medium blue and dark blue are all the same colour or hue—blue.

Value is a variation on the pure hue. Pure colours, as they are shown on the colour wheel, can be too intense for comfort, and are usually modified to make them lighter or darker. Pale green, pastel green and dark green are all values of the pure hue.

Tints are the value you get when the hue is lightened by adding white to the hue.

Shades are the result of adding black.

Tones are muted values of the hue achieved by adding grey.

—News Canada

Virginia Brazeau R.N.

#1 IN MILTON FOR ROYAL LEPAGE... AGAIN!

TOP 1% IN CANADA... AGAIN



*JOSEPH BRAZEAU, *RUTH KERR, BA. MA

VIRTUAL TOURS: www.Milton-RealEstate.com
EMAIL: VBrazeau@RoyalLePage.ca

ROYAL LEPAGE
Royal LePage Real Estate Services Ltd., Broker

905-878-8101
388 MAIN ST. E., MILTON

MINUTES TO 401/GUELPH LINE!
Mature trees provide privacy from road/neighbors. Stone 5-bdrm Fr country exec on 2 acres. 2-storey great rm (firepl & Fr dis to patio) opens to kit w/ brkfst rm & expansive din rm. Marble firepl in oak study. Main flr master w/ huge ens & walkout \$598,000. Wonderful opportunity!



4-BEDROOM BUNGALOW ON 1.85 ACRES!
Lovely 4-bdrm executive of exceptional quality! Oak flrs, solar-tinted windows, skylts, UV H2O system. Ceramic/ oak kit w/ brkfst area & walkout to cov'd deck open to fam rm w/ firepl! Beautifully fin'd lower level w/ bdrm, bath, wdstv. \$429,000. You deserve the luxuries this home offers!



YOUR OWN 10-ACRE PARK!
Incredibly well-maintained! 4,000 sq ft (approx) 4-bdrm in perfectly private setting w/ wrought-iron entry gates. 4 firepl, 9 skylts, gleaming hrdwd flrs. Master: stone firepl, sitting rm, walkin closet, luxurious ens, private balcony. Spacious & sunny oak eat-in kit w/ skylts, isld, brkfst bar. \$659,000. 10 mins to 401!



BEAUTIFUL BRICK/STONE BUNGALOW!
2,200 sq ft 4-bdrm. In final stages of construction - ready for your choice of finishing colours, materials, etc. Gas firepl & 12' ceilings in great rm. Master w/ vaulted ceiling, walkin closet, 5-pc ens. Bdrm/den w/ full bath, gas firepl. Ceramic & oak flrs. 3-car garage. \$549,000. Glorious views of surrounding countryside from hilltop vantage point.



'LOG' HOME ON 5 ACRES WITH POND!
15 mins to 401/Hwy 25! 5-bdrm on hilltop for breathtaking views! Gourmet country kit & liv rm w/ wdstv-both w/ Fr dr walkouts to deck overlooking pond, mature trees, rolling countryside. Spacious master w/ ens & walkin closet. Wood flrs thru-out. \$449,000. Luxury & refinement w/ rustic flair!



FLOWING STREAM THROUGH PROPERTY!
In village setting just mins to 401! Upgraded & well-maintained! Gleaming hrdwd flrs, rplcd windows & carpets, freshly painted, tasteful decor. Stream w/ foot-bridge & mature trees. Oversized att garage, shed, dog run. \$309,000. Country living yet close to all conveniences!



47 ACRES WAITING FOR YOUR DREAM HOME!
Build on a hilltop for panoramic views, in the woods for privacy, overlooking a peaceful pond & flowing stream or in a tree-lined meadow. It's all here just North of Ballinfad w/quick access to 401/Trafalgar. \$299,000. Everything you could ask for in a country property!



* SALES REP